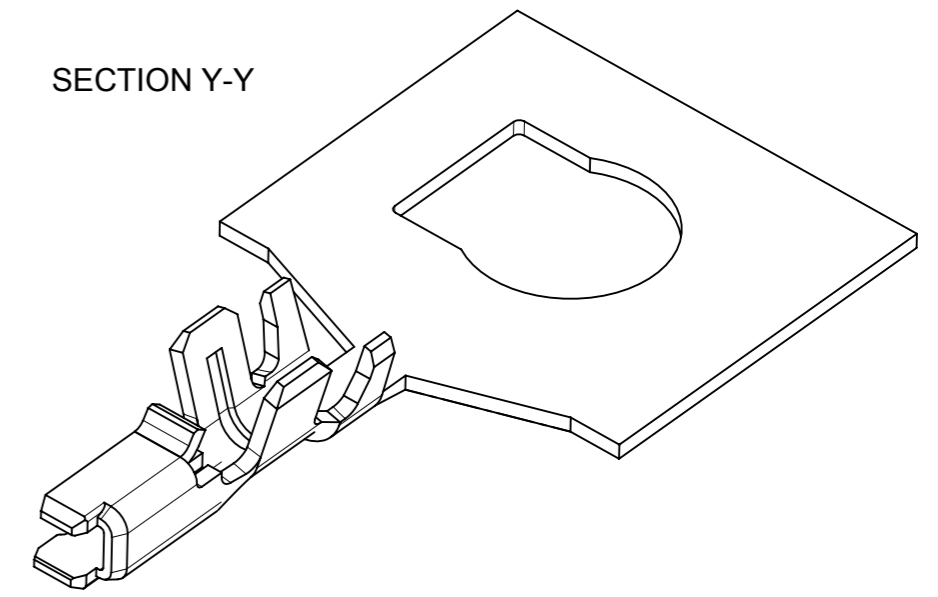
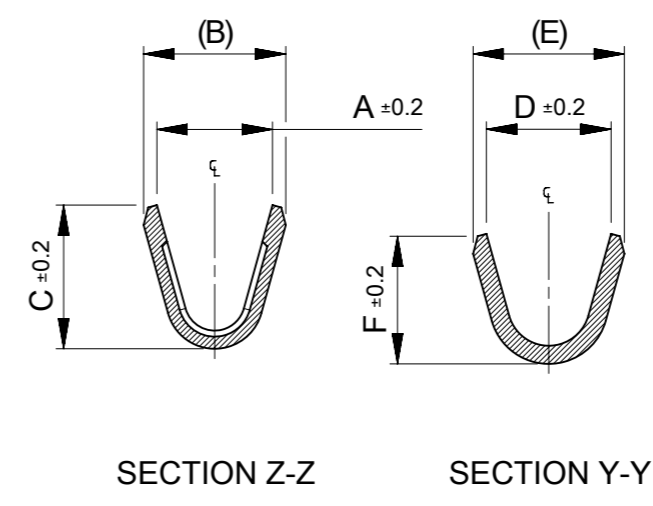
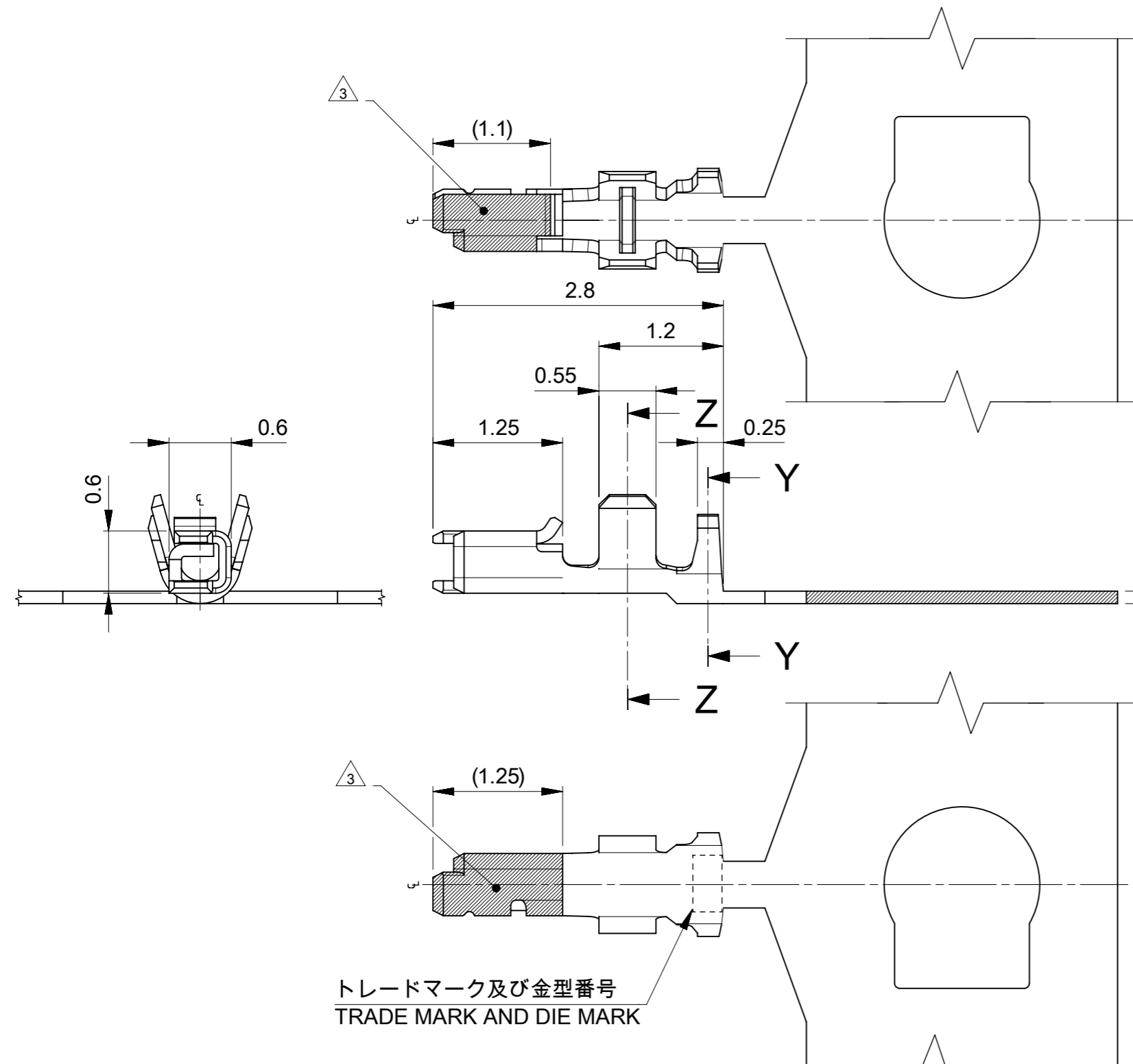


### NOTES

- △1 材料及び仕上げ(めっき仕様) : TABLE 1 参照  
MATERIAL AND FINISHES : SEE TABLE 1
- 2. 適合ハウジング : 214719シリーズ  
APPLICABLE HOUSING : 214719 SERIES
- △3 図示の斜線部の範囲は接点部の為、傷、打痕、汚れなどを付けないようにして下さい。  
PLEASE DON'T DAMEGE, DON'T DENT, AND DON'T MAKE IT DIRTY,  
BECAUSE THE SHADED PORTION SHOWN IN FIGURE  
IS THE CONTACT AREA.



トレードマーク及び金型番号  
TRADE MARK AND DIE MARK

△1 TABLE 1

部品 PART	材質 MATERIAL	
ターミナル TERMINAL	MATERIAL	銅合金 COPPER ALLOY
	下地めっき UNDER PLATING	ニッケルめっき(下地):1.0 MICROMETER MINIMUM NICKEL (UNDER PLATING)
	接点部 CONTACT	錫めっき(リフロー処理) : 1.0 MICROMETER MINIMUM MATTE TIN REFLOW TREATMENT

0.79	0.9	0.71	0.9	0.84	0.65	Φ0.44-0.5mm	AWG #30 -32	リール	214720 5001	連鎖状
0.86	1.0	0.82	0.95	0.94	0.76	Φ0.5-0.6mm	AWG #28 -30	REEL	214720 5000	CHAIN
F	E	D	C	B	A	絶縁被覆外径範囲 INS. RANGE	適合電線範囲 WIRE RANGE	梱包形態 PACKAGING	発注番号 ORDER No.	端子形状 FORM

THIS DRAWING CONTAINS INFORMATION THAT IS PROPRIETARY TO MOLEX ELECTRONIC TECHNOLOGIES, LLC AND SHOULD NOT BE USED WITHOUT WRITTEN PERMISSION

DIMENSION UNITS mm	SCALE NTS	CURRENT REV DESC:	<b>molex</b>		
GENERAL TOLERANCES (UNLESS SPECIFIED)					
ANGULAR TOL	± 3.0°	EC NO: 694559 DRWN: HKOBAYASHI 2022/02/04 CHK'D: AIDA 2022/02/04 APPR: SAKIYAMA 2022/02/04 INITIAL REVISION: DRWN: HKOBAYASHI 2021/06/17 APPR: SAKIYAMA 2022/01/28	ZERO-HACHI 0.8WTB CRIMP TERM TIN PLATING		
4 PLACES	± 0.2		PRODUCT CUSTOMER DRAWING		
3 PLACES	± 0.2		DOCUMENT NUMBER		
2 PLACES	± 0.2		2147200000-SD		
1 PLACE	± 0.2		DOC TYPE DOC PART REVISION		
0 PLACES	± 0.2	PSD 000 B			
DRAFT WHERE APPLICABLE MUST REMAIN WITHIN DIMENSIONS		THIRD ANGLE PROJECTION	DRAWING	SERIES	SHEET NUMBER
			A3-SIZE	214720	1 OF 2

適合製品及び各種仕様書  
 APPLICABLE PRODUCTS AND VARIOUS SPECIFICATIONS

梱包仕様書 PACKAGING SPECIFICATION	PART NUMBER 2147205000 / 2147205001	SPECIFICATION NUMBER 2147209200-SPK 200
----------------------------------	--	--

適合ハウジング APPLY HOUSING	SINGLE TYPE
シリーズ番号 SERIES No.	214719
適合嵌合相手 MATE WITH	SMT
	TIN PLATING
	RIGHT ANGLE
シリーズ番号 SERIES No.	214721
製品仕様書 PRODUCT SPECIFICATION	2147190000-PS 000
取扱説明書 APPLICATION SPECIFICATION	2166940000-AS 000

製品嵌合図は”適合嵌合相手”図面参照のこと  
 MATING VIEW : REFER TO "MATE WITH" PART DRAWING.

THIS DRAWING CONTAINS INFORMATION THAT IS PROPRIETARY TO MOLEX ELECTRONIC TECHNOLOGIES, LLC AND SHOULD NOT BE USED WITHOUT WRITTEN PERMISSION									
DIMENSION UNITS	SCALE	CURRENT REV DESC:				<b>molex</b>			
mm	NTS								
GENERAL TOLERANCES (UNLESS SPECIFIED)						ZERO-HACHI 0.8WTB CRIMP TERM TIN PLATING			
ANGULAR TOL	± 3.0 °					PRODUCT CUSTOMER DRAWING			
4 PLACES	± 0.2	EC NO: 694559				DOCUMENT NUMBER			
3 PLACES	± 0.2	DRWN: HKOBAYASHI 2022/02/04				2147200000-SD			
2 PLACES	± 0.2	CHK'D: AIDA 2022/02/04				DOC TYPE			
1 PLACE	± 0.2	APPR: SAKIYAMA 2022/02/04				PSD			
0 PLACES	± 0.2	INITIAL REVISION:				DOC PART			
DRAFT WHERE APPLICABLE MUST REMAIN WITHIN DIMENSIONS		DRWN: HKOBAYASHI 2021/06/17				000			
THIRD ANGLE PROJECTION		APPR: SAKIYAMA 2022/01/28				REVISION			
DRAWING		SERIES				B			
A3-SIZE		MATERIAL NUMBER				SHEET NUMBER			
		214720				2 OF 2			
CUSTOMER		GENERAL							