

## RH-GM.B

## Bent tubular handles

Aluminium and stainless steel



### HANDLE SHANKS

Aluminium, epoxy resin coating, black colour.  
Threaded blind holes.

### TUBE

AISI 304 stainless steel, ground surface.

### END CAPS

Polyamide based (PA) technopolymer, black colour.

### DESIGN

The slightly bent shape of the tube provides RH-GM.B handle a modern and refined design in perfect harmony with the latest trends in industrial design.

### SPECIAL EXECUTIONS ON REQUEST

Different lengths.



## RH-TL.GM

## Bent tubular handles

Aluminium and stainless steel



### HANDLE SHANKS

Extruded aluminium, anodised in natural colour, semi-glossy finish.  
Threaded blind holes.

### TUBE

AISI 304 stainless steel, ground surface.

### END CAPS

Stainless steel.

### DESIGN

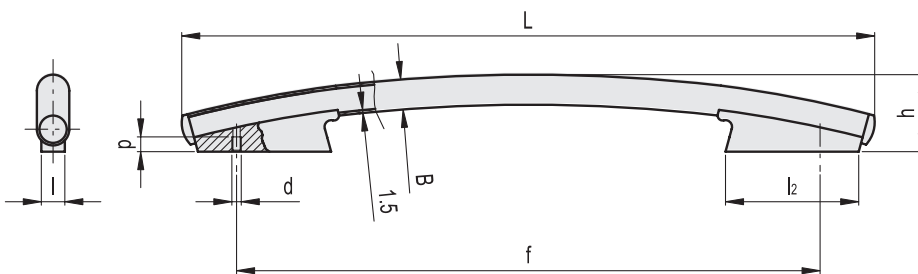
The slightly bent shape of the tube provides RH-TL.GM handle a modern and refined design in perfect harmony with the latest trends in industrial design.

### SPECIAL EXECUTIONS ON REQUEST

Different lengths.



Conversion Table	
1 mm = 0.039 inch	
L	
mm	inch
613	24.13
713	28.07



Code	f	d	p	L	B	h	l	l <sub>2</sub>	⚖
RHGM-30.B500.33	500	M8	15	613	30	73	22	112	976
RHGM-30.B600.33	600	M8	15	713	30	80	22	136	1109



Code	f	d	p	L	B	h	l	l <sub>2</sub>	⚖
RHTL.GM-30.500.37	500	M8	15	613	30	73	22	112	984
RHTL.GM-30.600.37	600	M8	15	713	30	80	22	136	1169

- 1
- 2
- 3
- 4
- 5
- 6
- 7
- 8
- 9
- 10
- 11
- 12
- 13
- 14
- 15
- 16
- 17
- 18

Lift & Pull handles