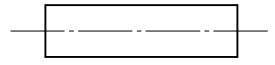
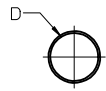


|   | 13              |                    | 12              |                    | 11              |                    | 10              |                    | 9               |                    | 8               |                    | 7               |                    | 6               |                    | 5               |              | 4            |             | 3 |  | 2 |  | 1 |  |  |
|---|-----------------|--------------------|-----------------|--------------------|-----------------|--------------------|-----------------|--------------------|-----------------|--------------------|-----------------|--------------------|-----------------|--------------------|-----------------|--------------------|-----------------|--------------|--------------|-------------|---|--|---|--|---|--|--|
|   | BLACK           |                    | WHITE           |                    | RED             |                    | BLUE            |                    | CLEAR           |                    | YELLOW          |                    | MIN             |                    | MAX             |                    | RECOVERED       |              | LENGTH       |             |   |  |   |  |   |  |  |
|   | MATERIAL NUMBER | ENGINEERING NUMBER | MATERIAL NUMBER | ENGINEERING NUMBER | MATERIAL NUMBER | ENGINEERING NUMBER | MATERIAL NUMBER | ENGINEERING NUMBER | MATERIAL NUMBER | ENGINEERING NUMBER | MATERIAL NUMBER | ENGINEERING NUMBER | MATERIAL NUMBER | ENGINEERING NUMBER | MATERIAL NUMBER | ENGINEERING NUMBER | EXPANDED ID "D" | RECOVERED ID | WALL THK REF | FEET/METERS |   |  |   |  |   |  |  |
| J | 192670015       | PF-3/64-1BK        | 192670016       | PF-3/64-1WT        | 192670017       | PF-3/64-1RD        | 192670018       | PF-3/64-1BL        | 192670019       | PF-3/64-1CL        | 192670020       | PF-3/64-1YL        | .046/1.17       | .023/0.58          | .018/0.46       |                    |                 |              |              |             |   |  |   |  |   |  |  |
|   | 192670045       | PF-1/16-1BK        | 192670046       | PF-1/16-1WT        | 192670047       | PF-1/16-1RD        | 192670048       | PF-1/16-1BL        | 192670049       | PF-1/16-1CL        | 192670050       | PF-1/16-1YL        | .063/1.60       | .031/0.79          | .018/0.46       |                    |                 |              |              |             |   |  |   |  |   |  |  |
|   | 192670075       | PF-3/32-1BK        | 192670076       | PF-3/32-1WT        | 192670077       | PF-3/32-1RD        | 192670078       | PF-3/32-1BL        | 192670079       | PF-3/32-1CL        | 192670080       | PF-3/32-1YL        | .093/2.36       | .046/1.17          | .020/0.51       |                    |                 |              |              |             |   |  |   |  |   |  |  |
|   | 192670105       | PF-1/8-1BK         | 192670106       | PF-1/8-1WT         | 192670107       | PF-1/8-1RD         | 192670108       | PF-1/8-1BL         | 192670109       | PF-1/8-1CL         | 192670110       | PF-1/8-1YL         | .125/3.18       | .062/1.57          | .020/0.51       |                    |                 |              |              |             |   |  |   |  |   |  |  |
|   | 192670135       | PF-3/16-1BK        | 192670136       | PF-3/16-1WT        | 192670137       | PF-3/16-1RD        | 192670138       | PF-3/16-1BL        | 192670139       | PF-3/16-1CL        | 192670140       | PF-3/16-1YL        | .187/4.75       | .093/2.36          | .020/0.51       |                    |                 |              |              |             |   |  |   |  |   |  |  |
|   | 192670165       | PF-1/4-1BK         | 192670166       | PF-1/4-1WT         | 192670167       | PF-1/4-1RD         | 192670168       | PF-1/4-1BL         | 192670169       | PF-1/4-1CL         | 192670170       | PF-1/4-1YL         | .250/6.35       | .125/3.18          | .025/0.64       |                    |                 |              |              |             |   |  |   |  |   |  |  |
| I | 192670195       | PF-3/8-1BK         | 192670196       | PF-3/8-1WT         | 192670197       | PF-3/8-1RD         | 192670198       | PF-3/8-1BL         | 192670199       | PF-3/8-1CL         | 192670200       | PF-3/8-1YL         | .375/9.53       | .187/4.75          | .025/0.64       |                    |                 |              |              |             |   |  |   |  |   |  |  |
|   | 192670225       | PF-1/2-1BK         | 192670226       | PF-1/2-1WT         | 192670227       | PF-1/2-1RD         | 192670228       | PF-1/2-1BL         | 192670229       | PF-1/2-1CL         | 192670230       | PF-1/2-1YL         | .500/12.70      | .250/6.35          | .025/0.64       |                    |                 |              |              |             |   |  |   |  |   |  |  |
|   | 192670255       | PF-3/4-1BK         | 192670256       | PF-3/4-1WT         | 192670257       | PF-3/4-1RD         | 192670258       | PF-3/4-1BL         | 192670259       | PF-3/4-1CL         | 192670260       | PF-3/4-1YL         | .750/19.05      | .375/9.53          | .030/0.76       |                    |                 |              |              |             |   |  |   |  |   |  |  |
|   | 192670285       | PF-1-1BK           | 192670286       | PF-1-1WT           | 192670287       | PF-1-1RD           | 192670288       | PF-1-1BL           | 192670289       | PF-1-1CL           | 192670290       | PF-1-1YL           | 1.000/25.40     | .500/12.70         | .035/0.89       |                    |                 |              |              |             |   |  |   |  |   |  |  |
|   | 192670315       | PF-1-1/2-1BK       | 192670316       | PF-1-1/2-1WT       | 192670317       | PF-1-1/2-1RD       | 192670318       | PF-1-1/2-1BL       | 192670319       | PF-1-1/2-1CL       | 192670320       | PF-1-1/2-1YL       | 1.500/38.10     | .750/19.05         | .040/1.02       |                    |                 |              |              |             |   |  |   |  |   |  |  |
|   | 192670345       | PF-2-1BK           | 192670346       | PF-2-1WT           | 192670347       | PF-2-1RD           | 192670348       | PF-2-1BL           | 192670349       | PF-2-1CL           | 192670350       | PF-2-1YL           | 2.000/50.80     | 1.000/25.40        | .045/1.14       |                    |                 |              |              |             |   |  |   |  |   |  |  |
|   | 192670375       | PF-3-1BK           | 192670376       | PF-3-1WT           | 192670377       | PF-3-1RD           | 192670378       | PF-3-1BL           | 192670379       | PF-3-1CL           | 192670380       | PF-3-1YL           | 3.000/76.20     | 1.500/38.10        | .050/1.27       |                    |                 |              |              |             |   |  |   |  |   |  |  |
| H | 192670405       | PF-4-1BK           |                 |                    |                 |                    |                 |                    | 192670409       | PF-3-1CL           |                 |                    | 4.000/101.60    | 2.000/50.80        | .055/1.40       |                    |                 |              |              |             |   |  |   |  |   |  |  |
|   | 192670033       | PF-3/64-4BK        | 192670034       | PF-3/64/4WT        | 192670035       | PF-3/64-4RD        | 192670036       | PF-3/64-4BL        | 192670037       | PF-3/64-4CL        | 192670038       | PF-3/64-4YL        | .046/1.17       | .023/0.58          | .018/0.46       |                    |                 |              |              |             |   |  |   |  |   |  |  |
|   | 192670063       | PF-1/16-4BK        | 192670064       | PF-1/16-4WT        | 192670065       | PF-1/16-4RD        | 192670066       | PF-1/16-4BL        | 192670067       | PF-1/16-4CL        | 192670068       | PF-1/16-4YL        | .063/1.60       | .031/0.79          | .018/0.46       |                    |                 |              |              |             |   |  |   |  |   |  |  |
|   | 192670093       | PF-3/32-4BK        | 192670094       | PF-3/32-4WT        | 192670095       | PF-3/32-4RD        | 192670096       | PF-3/32-4BL        | 192670097       | PF-3/32-4CL        | 192670098       | PF-3/32-4YL        | .093/2.36       | .046/1.17          | .020/0.51       |                    |                 |              |              |             |   |  |   |  |   |  |  |
|   | 192670123       | PF-1/8-4BK         | 192670124       | PF-1/8-4WT         | 192670125       | PF-1/8-4RD         | 192670126       | PF-1/8-4BL         | 192670127       | PF-1/8-4CL         | 192670128       | PF-1/8-4YL         | .125/3.18       | .062/1.57          | .020/0.51       |                    |                 |              |              |             |   |  |   |  |   |  |  |
|   | 192670153       | PF-3/16-4BK        | 192670154       | PF-3/16-4WT        | 192670155       | PF-3/16-4RD        | 192670156       | PF-3/16-4BL        | 192670157       | PF-3/16-4CL        | 192670158       | PF-3/16-4YL        | .187/4.75       | .093/2.36          | .020/0.51       |                    |                 |              |              |             |   |  |   |  |   |  |  |
| G | 192670183       | PF-1/4-4BK         | 192670184       | PF-1/4-4WT         | 192670185       | PF-1/4-4RD         | 192670186       | PF-1/4-4BL         | 192670187       | PF-1/4-4CL         | 192670188       | PF-1/4-4YL         | .250/6.35       | .125/3.18          | .025/0.64       |                    |                 |              |              |             |   |  |   |  |   |  |  |
|   | 192670213       | PF-3/8-4BK         | 192670214       | PF-3/8-4WT         | 192670215       | PF-3/8-4RD         | 192670216       | PF-3/8-4BL         | 192670217       | PF-3/8-4CL         | 192670218       | PF-3/8-4YL         | .375/9.53       | .187/4.75          | .025/0.64       |                    |                 |              |              |             |   |  |   |  |   |  |  |
|   | 192670243       | PF-1/2-4BK         | 192670244       | PF-1/2-4WT         | 192670245       | PF-1/2-4RD         | 192670246       | PF-1/2-4BL         | 192670247       | PF-1/2-4CL         | 192670248       | PF-1/2-4YL         | .500/12.70      | .250/6.35          | .025/0.64       |                    |                 |              |              |             |   |  |   |  |   |  |  |
|   | 192670273       | PF-3/4-4BK         | 192670274       | PF-3/4-4WT         | 192670275       | PF-3/4-4RD         | 192670276       | PF-3/4-4BL         | 192670277       | PF-3/4-4CL         | 192670278       | PF-3/4-4YL         | .750/19.05      | .375/9.53          | .030/0.76       |                    |                 |              |              |             |   |  |   |  |   |  |  |
|   | 192670303       | PF-1-4BK           | 192670304       | PF-1-4WT           | 192670305       | PF-1-4RD           | 192670306       | PF-1-4BL           | 192670307       | PF-1-4CL           | 192670308       | PF-1-4YL           | 1.000/25.40     | .500/12.70         | .035/0.89       |                    |                 |              |              |             |   |  |   |  |   |  |  |
|   | 192670333       | PF-1-1/2-4BK       | 192670334       | PF-1-1/2-4WT       | 192670335       | PF-1-1/2-4RD       | 192670336       | PF-1-1/2-4BL       | 192670337       | PF-1-1/2-4CL       | 192670338       | PF-1-1/2-4YL       | 1.500/38.10     | .750/19.05         | .040/1.02       |                    |                 |              |              |             |   |  |   |  |   |  |  |
| F | 192670363       | PF-2-4BK           | 192670364       | PF-2-4WT           | 192670365       | PF-2-4RD           | 192670366       | PF-2-4BL           | 192670367       | PF-2-4CL           | 192670368       | PF-2-4YL           | 2.000/50.80     | 1.000/25.40        | .045/1.14       |                    |                 |              |              |             |   |  |   |  |   |  |  |
|   | 192670393       | PF-3-4BK           | 192670394       | PF-3-4WT           | 192670395       | PF-3-4RD           | 192670396       | PF-3-4BL           | 192670397       | PF-3-4CL           | 192670398       | PF-3-4YL           | 3.000/76.20     | 1.500/38.10        | .050/1.27       |                    |                 |              |              |             |   |  |   |  |   |  |  |
|   | 192670423       | PF-4-4BK           |                 |                    |                 |                    |                 |                    | 192670427       | PF-4-4CL           |                 |                    | 4.000/101.60    | 2.000/50.80        | .055/1.40       |                    |                 |              |              |             |   |  |   |  |   |  |  |
|   | 192670039       | PF-3/64-5BK        | 192670040       | PF-3/64-5WT        | 192670041       | PF-3/64-5RD        | 192670042       | PF-3/64-5BL        | 192670043       | PF-3/64-5CL        | 192670044       | PF-3/64-5YL        | .046/1.17       | .023/0.58          | .018/0.46       |                    |                 |              |              |             |   |  |   |  |   |  |  |
|   | 192670069       | PF-1/16-5BK        | 192670070       | PF-1/16-5WT        | 192670071       | PF-1/16-5RD        | 192670072       | PF-1/16-5BL        | 192670073       | PF-1/16-5CL        | 192670074       | PF-1/16-5YL        | .063/1.60       | .031/0.79          | .018/0.46       |                    |                 |              |              |             |   |  |   |  |   |  |  |
|   | 192670099       | PF-3/32-5BK        | 192670100       | PF-3/32-5WT        | 192670101       | PF-3/32-5RD        | 192670102       | PF-3/32-5BL        | 192670103       | PF-3/32-5CL        | 192670104       | PF-3/32-5YL        | .093/2.36       | .046/1.17          | .020/0.51       |                    |                 |              |              |             |   |  |   |  |   |  |  |
|   | 192670129       | PF-1/8-5BK         | 192670130       | PF-1/8-5WT         | 192670131       | PF-1/8-5RD         | 192670132       | PF-1/8-5BL         | 192670133       | PF-1/8-5CL         | 192670134       | PF-1/8-5YL         | .125/3.18       | .062/1.57          | .020/0.51       |                    |                 |              |              |             |   |  |   |  |   |  |  |
| E | 192670159       | PF-3/16-5BK        | 192670160       | PF-3/16-5WT        | 192670161       | PF-3/16-5RD        | 192670162       | PF-3/16-5BL        | 192670163       | PF-3/16-5CL        | 192670164       | PF-3/16-5YL        | .187/4.75       | .093/2.36          | .020/0.51       |                    |                 |              |              |             |   |  |   |  |   |  |  |
|   | 192670189       | PF-1/4-5BK         | 192670190       | PF-1/4-5WT         | 192670191       | PF-1/4-5RD         | 192670192       | PF-1/4-5BL         | 192670193       | PF-1/4-5CL         | 192670194       | PF-1/4-5YL         | .250/6.35       | .125/3.18          | .025/0.64       |                    |                 |              |              |             |   |  |   |  |   |  |  |
|   | 192670219       | PF-3/8-5BK         | 192670220       | PF-3/8-5WT         | 192670221       | PF-3/8-5RD         | 192670222       | PF-3/8-5BL         | 192670223       | PF-3/8-5CL         | 192670224       | PF-3/8-5YL         | .375/9.53       | .187/4.75          | .025/0.64       |                    |                 |              |              |             |   |  |   |  |   |  |  |
|   | 192670249       | PF-1/2-5BK         | 192670250       | PF-1/2-5WT         | 192670251       | PF-1/2-5RD         | 192670252       | PF-1/2-5BL         | 192670253       | PF-1/2-5CL         | 192670254       | PF-1/2-5YL         | .500/12.70      | .250/6.35          | .025/0.64       |                    |                 |              |              |             |   |  |   |  |   |  |  |

SALES DRAWING



NOTES:

- MATERIAL: POLYOLEFIN
- OTHER CUT LENGTHS ARE AVAILABLE.
- PARTS ARE RoHS COMPLIANT.

|   |            |             |
|---|------------|-------------|
| CHANGED TITLE<br>EC NO: IPGZ2013-0982<br>DRAWING: JASO1<br>CHKD: JACNEIL<br>APPR: JACNEIL | 2013/01/10 | DESCRIPTION |
|   | 2013/01/10 |             |
| REV   |            |             |
| B1  |            |             |

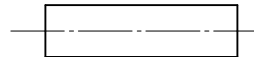
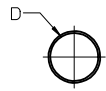
|  |                                       |       |
|--|---------------------------------------|-------|
| QUALITY SYMBOLS<br>▽=0<br>▽=0                        | GENERAL TOLERANCES (UNLESS SPECIFIED) |       |
|  | mm                                    | INCH  |
|  | 4 PLACES ± ---                        | ± --- |
|  | 3 PLACES ± ---                        | ± --- |
|  | 2 PLACES ± ---                        | ± --- |
|  | 1 PLACE ± ---                         | ± --- |
|  | ANGULAR ± ---°                        |       |
| DRAFT WHERE APPLICABLE MUST REMAIN WITHIN DIMENSIONS |                                       |       |

|                           |                    |
|---------------------------|--------------------|
| DIMENSION STYLE<br>IN/MM  |                    |
| DRAWN BY<br>BENDERLE      | DATE<br>2004/08/04 |
| CHECKED BY<br>R DEROSS    | DATE<br>2004/08/04 |
| APPROVED BY<br>R DEROSS   | DATE<br>2004/08/04 |
| MATERIAL NO.<br>SEE CHART |                    |
| SIZE<br>C                 |                    |

|   |                      |                        |
|---|----------------------|------------------------|
| SCALE<br>1:1  | DESIGN UNITS<br>INCH | THIRD ANGLE PROJECTION |
| TITLE<br>POLYOLEFIN HEAT SHRINK TUBING 19267 SERIES   |                      |                        |
| MOLEX INCORPORATED  |                      |                        |
| DOCUMENT NO.<br>SD-19267-001  | SHEET NO.<br>1 OF 1  |                        |
| THIS DRAWING CONTAINS INFORMATION THAT IS PROPRIETARY TO MOLEX INCORPORATED AND SHOULD NOT BE USED WITHOUT WRITTEN PERMISSION |                      |                        |

|   | 13              |                    | 12              |                    | 11              |                    | 10              |                    | 9               |                    | 8               |                    | 7               |                    | 6               |                    | 5               |              | 4            |             | 3 |  | 2 |  | 1 |  |  |
|---|-----------------|--------------------|-----------------|--------------------|-----------------|--------------------|-----------------|--------------------|-----------------|--------------------|-----------------|--------------------|-----------------|--------------------|-----------------|--------------------|-----------------|--------------|--------------|-------------|---|--|---|--|---|--|--|
|   | BLACK           |                    | WHITE           |                    | RED             |                    | BLUE            |                    | CLEAR           |                    | YELLOW          |                    | MIN             |                    | MAX             |                    | RECOVERED       |              | LENGTH       |             |   |  |   |  |   |  |  |
|   | MATERIAL NUMBER | ENGINEERING NUMBER | MATERIAL NUMBER | ENGINEERING NUMBER | MATERIAL NUMBER | ENGINEERING NUMBER | MATERIAL NUMBER | ENGINEERING NUMBER | MATERIAL NUMBER | ENGINEERING NUMBER | MATERIAL NUMBER | ENGINEERING NUMBER | MATERIAL NUMBER | ENGINEERING NUMBER | MATERIAL NUMBER | ENGINEERING NUMBER | EXPANDED ID "D" | RECOVERED ID | WALL THK REF | FEET/METERS |   |  |   |  |   |  |  |
| J | 192670015       | PF-3/64-1BK        | 192670016       | PF-3/64-1WT        | 192670017       | PF-3/64-1RD        | 192670018       | PF-3/64-1BL        | 192670019       | PF-3/64-1CL        | 192670020       | PF-3/64-1YL        | .046/1.17       | .023/0.58          | .018/0.46       |                    |                 |              |              |             |   |  |   |  |   |  |  |
|   | 192670045       | PF-1/16-1BK        | 192670046       | PF-1/16-1WT        | 192670047       | PF-1/16-1RD        | 192670048       | PF-1/16-1BL        | 192670049       | PF-1/16-1CL        | 192670050       | PF-1/16-1YL        | .063/1.60       | .031/0.79          | .018/0.46       |                    |                 |              |              |             |   |  |   |  |   |  |  |
|   | 192670075       | PF-3/32-1BK        | 192670076       | PF-3/32-1WT        | 192670077       | PF-3/32-1RD        | 192670078       | PF-3/32-1BL        | 192670079       | PF-3/32-1CL        | 192670080       | PF-3/32-1YL        | .093/2.36       | .046/1.17          | .020/0.51       |                    |                 |              |              |             |   |  |   |  |   |  |  |
|   | 192670105       | PF-1/8-1BK         | 192670106       | PF-1/8-1WT         | 192670107       | PF-1/8-1RD         | 192670108       | PF-1/8-1BL         | 192670109       | PF-1/8-1CL         | 192670110       | PF-1/8-1YL         | .125/3.18       | .062/1.57          | .020/0.51       |                    |                 |              |              |             |   |  |   |  |   |  |  |
|   | 192670135       | PF-3/16-1BK        | 192670136       | PF-3/16-1WT        | 192670137       | PF-3/16-1RD        | 192670138       | PF-3/16-1BL        | 192670139       | PF-3/16-1CL        | 192670140       | PF-3/16-1YL        | .187/4.75       | .093/2.36          | .020/0.51       |                    |                 |              |              |             |   |  |   |  |   |  |  |
|   | 192670165       | PF-1/4-1BK         | 192670166       | PF-1/4-1WT         | 192670167       | PF-1/4-1RD         | 192670168       | PF-1/4-1BL         | 192670169       | PF-1/4-1CL         | 192670170       | PF-1/4-1YL         | .250/6.35       | .125/3.18          | .025/0.64       |                    |                 |              |              |             |   |  |   |  |   |  |  |
| I | 192670195       | PF-3/8-1BK         | 192670196       | PF-3/8-1WT         | 192670197       | PF-3/8-1RD         | 192670198       | PF-3/8-1BL         | 192670199       | PF-3/8-1CL         | 192670200       | PF-3/8-1YL         | .375/9.53       | .187/4.75          | .025/0.64       |                    |                 |              |              |             |   |  |   |  |   |  |  |
|   | 192670225       | PF-1/2-1BK         | 192670226       | PF-1/2-1WT         | 192670227       | PF-1/2-1RD         | 192670228       | PF-1/2-1BL         | 192670229       | PF-1/2-1CL         | 192670230       | PF-1/2-1YL         | .500/12.70      | .250/6.35          | .025/0.64       |                    |                 |              |              |             |   |  |   |  |   |  |  |
|   | 192670255       | PF-3/4-1BK         | 192670256       | PF-3/4-1WT         | 192670257       | PF-3/4-1RD         | 192670258       | PF-3/4-1BL         | 192670259       | PF-3/4-1CL         | 192670260       | PF-3/4-1YL         | .750/19.05      | .375/9.53          | .030/0.76       |                    |                 |              |              |             |   |  |   |  |   |  |  |
|   | 192670285       | PF-1-1BK           | 192670286       | PF-1-1WT           | 192670287       | PF-1-1RD           | 192670288       | PF-1-1BL           | 192670289       | PF-1-1CL           | 192670290       | PF-1-1YL           | 1.000/25.40     | .500/12.70         | .035/0.89       |                    |                 |              |              |             |   |  |   |  |   |  |  |
|   | 192670315       | PF-1-1/2-1BK       | 192670316       | PF-1-1/2-1WT       | 192670317       | PF-1-1/2-1RD       | 192670318       | PF-1-1/2-1BL       | 192670319       | PF-1-1/2-1CL       | 192670320       | PF-1-1/2-1YL       | 1.500/38.10     | .750/19.05         | .040/1.02       |                    |                 |              |              |             |   |  |   |  |   |  |  |
|   | 192670345       | PF-2-1BK           | 192670346       | PF-2-1WT           | 192670347       | PF-2-1RD           | 192670348       | PF-2-1BL           | 192670349       | PF-2-1CL           | 192670350       | PF-2-1YL           | 2.000/50.80     | 1.000/25.40        | .045/1.14       |                    |                 |              |              |             |   |  |   |  |   |  |  |
|   | 192670375       | PF-3-1BK           | 192670376       | PF-3-1WT           | 192670377       | PF-3-1RD           | 192670378       | PF-3-1BL           | 192670379       | PF-3-1CL           | 192670380       | PF-3-1YL           | 3.000/76.20     | 1.500/38.10        | .050/1.27       |                    |                 |              |              |             |   |  |   |  |   |  |  |
| H | 192670405       | PF-4-1BK           |                 |                    |                 |                    |                 |                    | 192670409       | PF-3-1CL           |                 |                    | 4.000/101.60    | 2.000/50.80        | .055/1.40       |                    |                 |              |              |             |   |  |   |  |   |  |  |
|   | 192670033       | PF-3/64-4BK        | 192670034       | PF-3/64/4WT        | 192670035       | PF-3/64-4RD        | 192670036       | PF-3/64-4BL        | 192670037       | PF-3/64-4CL        | 192670038       | PF-3/64-4YL        | .046/1.17       | .023/0.58          | .018/0.46       |                    |                 |              |              |             |   |  |   |  |   |  |  |
|   | 192670063       | PF-1/16-4BK        | 192670064       | PF-1/16-4WT        | 192670065       | PF-1/16-4RD        | 192670066       | PF-1/16-4BL        | 192670067       | PF-1/16-4CL        | 192670068       | PF-1/16-4YL        | .063/1.60       | .031/0.79          | .018/0.46       |                    |                 |              |              |             |   |  |   |  |   |  |  |
|   | 192670093       | PF-3/32-4BK        | 192670094       | PF-3/32-4WT        | 192670095       | PF-3/32-4RD        | 192670096       | PF-3/32-4BL        | 192670097       | PF-3/32-4CL        | 192670098       | PF-3/32-4YL        | .093/2.36       | .046/1.17          | .020/0.51       |                    |                 |              |              |             |   |  |   |  |   |  |  |
|   | 192670123       | PF-1/8-4BK         | 192670124       | PF-1/8-4WT         | 192670125       | PF-1/8-4RD         | 192670126       | PF-1/8-4BL         | 192670127       | PF-1/8-4CL         | 192670128       | PF-1/8-4YL         | .125/3.18       | .062/1.57          | .020/0.51       |                    |                 |              |              |             |   |  |   |  |   |  |  |
|   | 192670153       | PF-3/16-4BK        | 192670154       | PF-3/16-4WT        | 192670155       | PF-3/16-4RD        | 192670156       | PF-3/16-4BL        | 192670157       | PF-3/16-4CL        | 192670158       | PF-3/16-4YL        | .187/4.75       | .093/2.36          | .020/0.51       |                    |                 |              |              |             |   |  |   |  |   |  |  |
| G | 192670183       | PF-1/4-4BK         | 192670184       | PF-1/4-4WT         | 192670185       | PF-1/4-4RD         | 192670186       | PF-1/4-4BL         | 192670187       | PF-1/4-4CL         | 192670188       | PF-1/4-4YL         | .250/6.35       | .125/3.18          | .025/0.64       |                    |                 |              |              |             |   |  |   |  |   |  |  |
|   | 192670213       | PF-3/8-4BK         | 192670214       | PF-3/8-4WT         | 192670215       | PF-3/8-4RD         | 192670216       | PF-3/8-4BL         | 192670217       | PF-3/8-4CL         | 192670218       | PF-3/8-4YL         | .375/9.53       | .187/4.75          | .025/0.64       |                    |                 |              |              |             |   |  |   |  |   |  |  |
|   | 192670243       | PF-1/2-4BK         | 192670244       | PF-1/2-4WT         | 192670245       | PF-1/2-4RD         | 192670246       | PF-1/2-4BL         | 192670247       | PF-1/2-4CL         | 192670248       | PF-1/2-4YL         | .500/12.70      | .250/6.35          | .025/0.64       |                    |                 |              |              |             |   |  |   |  |   |  |  |
|   | 192670273       | PF-3/4-4BK         | 192670274       | PF-3/4-4WT         | 192670275       | PF-3/4-4RD         | 192670276       | PF-3/4-4BL         | 192670277       | PF-3/4-4CL         | 192670278       | PF-3/4-4YL         | .750/19.05      | .375/9.53          | .030/0.76       |                    |                 |              |              |             |   |  |   |  |   |  |  |
|   | 192670303       | PF-1-4BK           | 192670304       | PF-1-4WT           | 192670305       | PF-1-4RD           | 192670306       | PF-1-4BL           | 192670307       | PF-1-4CL           | 192670308       | PF-1-4YL           | 1.000/25.40     | .500/12.70         | .035/0.89       |                    |                 |              |              |             |   |  |   |  |   |  |  |
|   | 192670333       | PF-1-1/2-4BK       | 192670334       | PF-1-1/2-4WT       | 192670335       | PF-1-1/2-4RD       | 192670336       | PF-1-1/2-4BL       | 192670337       | PF-1-1/2-4CL       | 192670338       | PF-1-1/2-4YL       | 1.500/38.10     | .750/19.05         | .040/1.02       |                    |                 |              |              |             |   |  |   |  |   |  |  |
| F | 192670363       | PF-2-4BK           | 192670364       | PF-2-4WT           | 192670365       | PF-2-4RD           | 192670366       | PF-2-4BL           | 192670367       | PF-2-4CL           | 192670368       | PF-2-4YL           | 2.000/50.80     | 1.000/25.40        | .045/1.14       |                    |                 |              |              |             |   |  |   |  |   |  |  |
|   | 192670393       | PF-3-4BK           | 192670394       | PF-3-4WT           | 192670395       | PF-3-4RD           | 192670396       | PF-3-4BL           | 192670397       | PF-3-4CL           | 192670398       | PF-3-4YL           | 3.000/76.20     | 1.500/38.10        | .050/1.27       |                    |                 |              |              |             |   |  |   |  |   |  |  |
|   | 192670423       | PF-4-4BK           |                 |                    |                 |                    |                 |                    | 192670427       | PF-4-4CL           |                 |                    | 4.000/101.60    | 2.000/50.80        | .055/1.40       |                    |                 |              |              |             |   |  |   |  |   |  |  |
|   | 192670039       | PF-3/64-5BK        | 192670040       | PF-3/64-5WT        | 192670041       | PF-3/64-5RD        | 192670042       | PF-3/64-5BL        | 192670043       | PF-3/64-5CL        | 192670044       | PF-3/64-5YL        | .046/1.17       | .023/0.58          | .018/0.46       |                    |                 |              |              |             |   |  |   |  |   |  |  |
|   | 192670069       | PF-1/16-5BK        | 192670070       | PF-1/16-5WT        | 192670071       | PF-1/16-5RD        | 192670072       | PF-1/16-5BL        | 192670073       | PF-1/16-5CL        | 192670074       | PF-1/16-5YL        | .063/1.60       | .031/0.79          | .018/0.46       |                    |                 |              |              |             |   |  |   |  |   |  |  |
|   | 192670099       | PF-3/32-5BK        | 192670100       | PF-3/32-5WT        | 192670101       | PF-3/32-5RD        | 192670102       | PF-3/32-5BL        | 192670103       | PF-3/32-5CL        | 192670104       | PF-3/32-5YL        | .093/2.36       | .046/1.17          | .020/0.51       |                    |                 |              |              |             |   |  |   |  |   |  |  |
|   | 192670129       | PF-1/8-5BK         | 192670130       | PF-1/8-5WT         | 192670131       | PF-1/8-5RD         | 192670132       | PF-1/8-5BL         | 192670133       | PF-1/8-5CL         | 192670134       | PF-1/8-5YL         | .125/3.18       | .062/1.57          | .020/0.51       |                    |                 |              |              |             |   |  |   |  |   |  |  |
| E | 192670159       | PF-3/16-5BK        | 192670160       | PF-3/16-5WT        | 192670161       | PF-3/16-5RD        | 192670162       | PF-3/16-5BL        | 192670163       | PF-3/16-5CL        | 192670164       | PF-3/16-5YL        | .187/4.75       | .093/2.36          | .020/0.51       |                    |                 |              |              |             |   |  |   |  |   |  |  |
|   | 192670189       | PF-1/4-5BK         | 192670190       | PF-1/4-5WT         | 192670191       | PF-1/4-5RD         | 192670192       | PF-1/4-5BL         | 192670193       | PF-1/4-5CL         | 192670194       | PF-1/4-5YL         | .250/6.35       | .125/3.18          | .025/0.64       |                    |                 |              |              |             |   |  |   |  |   |  |  |
|   | 192670219       | PF-3/8-5BK         | 192670220       | PF-3/8-5WT         | 192670221       | PF-3/8-5RD         | 192670222       | PF-3/8-5BL         | 192670223       | PF-3/8-5CL         | 192670224       | PF-3/8-5YL         | .375/9.53       | .187/4.75          | .025/0.64       |                    |                 |              |              |             |   |  |   |  |   |  |  |
|   | 192670249       | PF-1/2-5BK         | 192670250       | PF-1/2-5WT         | 192670251       | PF-1/2-5RD         | 192670252       | PF-1/2-5BL         | 192670253       | PF-1/2-5CL         | 192670254       | PF-1/2-5YL         | .500/12.70      | .250/6.35          | .025/0.64       |                    |                 |              |              |             |   |  |   |  |   |  |  |

SALES DRAWING



NOTES:

- MATERIAL: POLYOLEFIN
- OTHER CUT LENGTHS ARE AVAILABLE.
- PARTS ARE RoHS COMPLIANT.

|   |                        |                               |                                       |                     |  |                    |                        |                      |   |  |
|---|------------------------|-------------------------------|---------------------------------------|---------------------|--|--------------------|------------------------|----------------------|---|--|
| <b>CHANGED TITLE</b><br>EC NO: IPGZ2013-0982<br>DRWINGRO JASO1 2013/01/10<br>CHKD: JACNEIL 2013/01/10<br>APPR: JACNEIL 2013/01/31 | DESCRIPTION<br>REV: B1 | QUALITY SYMBOLS<br>▽=0<br>▽=0 | GENERAL TOLERANCES (UNLESS SPECIFIED) |                     | DIMENSION STYLE<br>IN/MM                             |                    | SCALE<br>1:1           | DESIGN UNITS<br>INCH | THIRD ANGLE PROJECTION  |  |
|   |                        |                               | 4 PLACES ± --- INCH                   | 3 PLACES ± --- INCH | 2 PLACES ± --- INCH                                  | 1 PLACE ± --- INCH | DRAWN BY<br>BENDERLE   | DATE<br>2004/08/04   | TITLE<br>POLYOLEFIN HEAT SHRINK TUBING 19267 SERIES   |  |
|   |                        |                               | ANGULAR ± ---°                        |                     | DRAFT WHERE APPLICABLE MUST REMAIN WITHIN DIMENSIONS |                    | CHECKED BY<br>R DEROSS | DATE<br>2004/08/04   | MOLEX INCORPORATED  |  |
|   |                        |                               | MATERIAL NO.<br>SEE CHART             |                     | DOCUMENT NO.<br>SD-19267-001                         |                    | SHEET NO.<br>1 OF 1    |                      | THIS DRAWING CONTAINS INFORMATION THAT IS PROPRIETARY TO MOLEX INCORPORATED AND SHOULD NOT BE USED WITHOUT WRITTEN PERMISSION |  |