

6

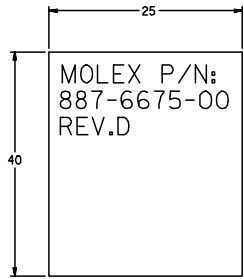
5

4

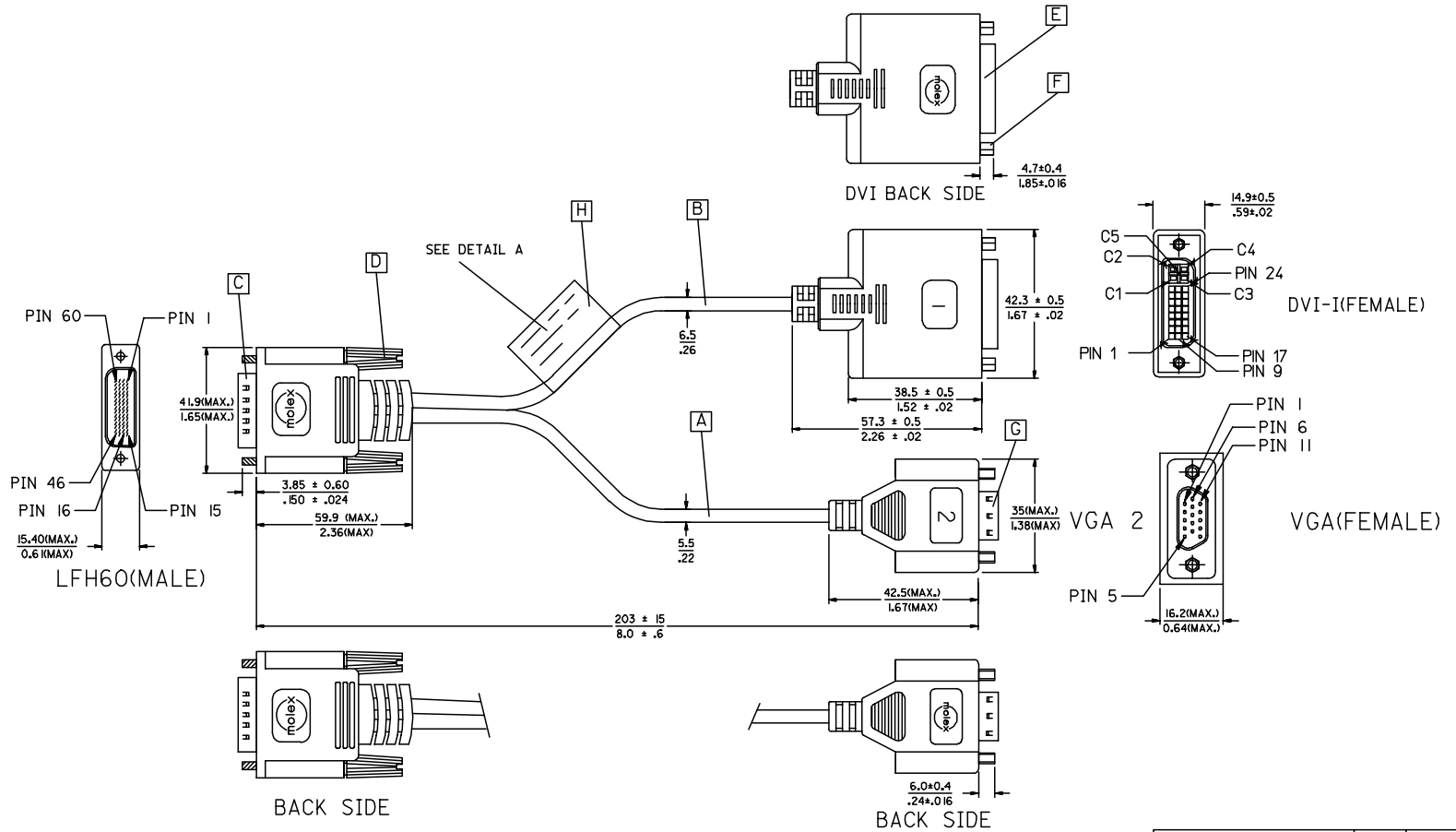
3

2

1



DETAIL A



BACK SIDE

BACK SIDE

EC NO. DRWN: PDAI 04/06/11 CHK: APPR:	DESCRIPTION MAJOR CRITICAL	GENERAL TOLERANCES: (UNLESS SPECIFIED)		SCALE N.S.T	DESIGN UNITS <input checked="" type="checkbox"/> mm <input type="checkbox"/> INCH	DIMENSIONS: <input checked="" type="checkbox"/> mm <input type="checkbox"/> INCH <input type="checkbox"/> mm ONLY	SHT REV															
		<table border="1"> <tr> <td></td> <td>mm</td> <td>INCH</td> </tr> <tr> <td>4 PLACES</td> <td>±0.</td> <td>±.</td> </tr> <tr> <td>3 PLACES</td> <td>±0.</td> <td>±.</td> </tr> <tr> <td>2 PLACES</td> <td>±0.</td> <td>±.</td> </tr> <tr> <td>1 PLACE</td> <td>±0.</td> <td>±.</td> </tr> </table>		mm	INCH	4 PLACES	±0.	±.	3 PLACES	±0.	±.	2 PLACES	±0.	±.	1 PLACE	±0.	±.	DRAWN BY & DATE METTLE 03/04/08	TITLE: LFH60(M) TO VGA(F) + DVI_I(F) ADAPTER CABLE			REVISE ON CAD ONLY
			mm	INCH																		
		4 PLACES	±0.	±.																		
3 PLACES	±0.	±.																				
2 PLACES	±0.	±.																				
1 PLACE	±0.	±.																				
ANGULAR: ± °	CHECKED BY & DATE MACKY 03/04/08	MOLEX INCORPORATED			SHEET NO. 1 OF 3																	
REV	APPR:	CAD FILENAME S88744BA.S01	MATERIAL NO. 88766-7500	DRAWING NO. SD-88744-027	SIZE A4																	

6

5

4

3

2

1

## WIRING DIAGRAM:

SHIELD	SHIELD	GROUND
C5	PIN 1,4,6Ø	GROUND(RED, BLUE, GREEN)
C4	PIN 56	VGA1_HSYNC
C3	PIN 3	VGA1_BLUE
C2	PIN 59	VGA1_GREEN
C1	PIN 2	VGA1_RED
PIN 23	PIN 31	DVI1_TXC+
PIN 24	PIN 32	DVI1_TXC-
PIN 22	PIN 57	DVI1_TXC RTN
PIN 19	PIN 33	DVI1_TXØ RTN
PIN 18	PIN 29	DVI1_TXØ+
PIN 17	PIN 3Ø	DVI1_TXØ-
PIN 16	PIN 36	DVI1_HPD
PIN 15	PIN 54	GROUND
PIN 14	PIN 5	+5V
PIN 11	PIN 34	DVI1_TX1 RTN
PIN 1Ø	PIN 27	DVI1_TX1+
PIN 9	PIN 28	DVI1_TX1-
PIN 8	PIN 55	VGA1_VSYNC
PIN 7	PIN 7	DVI1_DDC_DATA
PIN 6	PIN 6	DVI1_DDC_CLOCK
PIN 3	PIN 35	DVI1_TX2 RTN
PIN 2	PIN 25	DVI1_TX2+
PIN 1	PIN 26	DVI1_TX2-
DVI_I	LFH6Ø	CABLE FUNCTION

SHIELD	SHIELD	GROUND
PIN 15	PIN 1Ø	VGA_SCL
PIN 14	PIN 51	VGA_VSYNC
PIN 13	PIN 5Ø	VGA_HSYNC
PIN 12	PIN 9	VGA_SDA
PIN 1Ø	PIN 52	GROUND(SYNCS)
PIN 9	PIN 11	+5V
PIN 8	PIN 12	GROUND(BLUE)
PIN 7	PIN 46	GROUND(GREEN)
PIN 6	PIN 15	GROUND(RED)
PIN 5	PIN 49	GROUND(ANALOG)
PIN 3	PIN 13	VGA_BLUE
PIN 2	PIN 47	VGA_GREEN
PIN 1	PIN 14	VGA_RED
VGA2	LFH6Ø	CABLE FUNCTION

EC NO. DRWN: PDAI 04/06/11 CHK: APPR:	DESCRIPTION	QUALITY SYMBOLS	GENERAL TOLERANCES: (UNLESS SPECIFIED)	SCALE N.S.T	DESIGN UNITS <input checked="" type="checkbox"/> mm <input type="checkbox"/> INCH	<input checked="" type="checkbox"/> mm <input type="checkbox"/> INCH <input type="checkbox"/> mm ONLY	DIMENSIONS:	SHT	REV	
		MAJOR ▼ = CRITICAL ▽ =	mm    INCH	DRAWN BY & DATE METTLE 03/04/08	TITLE: LFH60(M) TO VGA(F) + DVI_I(F) ADAPTER CABLE	<input checked="" type="checkbox"/> mm <input type="checkbox"/> INCH <input type="checkbox"/> mm ONLY	THIRD ANGLE PROJECTION	REVISE ON CAD ONLY		
E	REV		4 PLACES ±0.    ±.		CHECKED BY & DATE MACKY 03/04/08	MOLEX INCORPORATED				
			3 PLACES ±0.    ±.		APPROVED BY & DATE T.WONG 03/04/08	MATERIAL NO. 88766-7500		DRAWING NO. SD-88744-027	SHEET NO. 2 OF 3	
			2 PLACES ±0.    ±.		CAD FILENAME S88744BA.S02	SIZE A4				
			1 PLACE ±0.    ±.		THIS DRAWING CONTAINS INFORMATION THAT IS PROPRIETARY TO MOLEX INCORPORATED AND SHOULD NOT BE USED WITHOUT WRITTEN PERMISSION.					
			ANGULAR: ±    °							

6

5

4

3

2

1

## NOTE:1. OVERMOLD SPECIFICATION

1.1 LFH60 BOOT MOLDED WITH BLACK PVC RESIN, UL94V-0.

1.2 VGA BOOT MOLDED WITH BLUE PVC RESIN, UL94V-0.

1.3 DVI\_I BOOT MOLDED WITH SNOW WHITE PVC RESIN: , UL94V-0.

## 2. MECHANICAL SPECIFICATION

▽ 2.1 CABLE SHOULD STAND THE PULL FORCE 89-111N FOR 30 SECONDS WITH NO VISIBLE TERMINATION DAMAGE.

2.2 CABLE SHOULD PASS THE FLEX TEST IN 100 CYCLES AT EACH OF PLANES, PER EIA 364-41, CONDITION 1.

## 3. CABLE ASSEMBLY ELECTRICAL SPECIFICATION

▽ 3.1 HI-POT VOLTAGE: 500VDC FOR 10ms.

▽ 3.2 INSULATION RESISTANCE: 100 MEGA Ohms PER MIN.

▽ 3.3 CONNECTION RESISTANCE: 2 Ohms MAX.

▽ 3.4 DIFFERENTIAL LINES CHARACTERISTIC IMPEDANCE: 100±7 Ohms.

@TDR 200 PSEC RISE TIME.

▽ 3.5 COAXIAL LINES CHARACTERISTIC IMPEDANCE: 75±10% Ohms @TDR 200 PSEC RISE TIME.


3.6 WRAP COPPER TAPE OVER BRAID, THEN CRIMP THE METAL CAN ON COPPER TAPE WITH 360°.

4. CONNECTOR PLATING: 0.000030" GOLD PLATING.

5. SCREW SPEC.: 4-40 UNC.

## MATERIAL LIST:

ITEM	DESCRIPTION	QTY.
H	LABEL	1
G	VGA D-SUB CONNECTOR(FEMALE)	1
F	DVI(F) JACK SCREW	2
E	DVI_I FEMALE CONNECTOR	1
D	LFH THUMB SCREW 4-40 UNC	2
C	LFH-60 PLUG ASSEMBLY	1
B	DVI-A/D CABLE BLACK	1
A	DVI ANALOG CABLE BLACK	1

EC NO. DRWN: CHK: APPR:	PDAI 04/06/11	DESCRIPTION	QUALITY SYMBOLS	GENERAL TOLERANCES: (UNLESS SPECIFIED)		SCALE N.S.T	DESIGN UNITS <input checked="" type="checkbox"/> mm <input type="checkbox"/> INCH	THIRD ANGLE PROJECTION	DIMENSIONS:			SHT	REV		
				mm	INCH				<input checked="" type="checkbox"/> mm INCH	<input type="checkbox"/> mm mm	<input type="checkbox"/> mm ONLY	REVISE ON CAD ONLY			
E	REV		MAJOR ▼ =	4 PLACES	±0.	±.	DRAWN BY & DATE METTLE 03/04/08	TITLE: LFH60(M) TO VGA(F) + DVI_I(F) ADAPTER CABLE	 MOLEX INCORPORATED	CAD FILENAME S88744BA.S03	MATERIAL NO. 88766-7500	DRAWING NO. SD-88744-027	SHEET NO. 3 OF 3	SIZE A4	
			CRITICAL ▽ =	3 PLACES	±0.	±.									CHECKED BY & DATE MACKY 03/04/08
				2 PLACES	±0.	±.									APPROVED BY & DATE T.WONG 03/04/08
				1 PLACE	±0.	±.									
				ANGULAR: ± °											

WBORD\_A.BOR REV A  
97/05/14 LEVEL 3