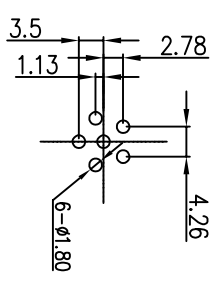
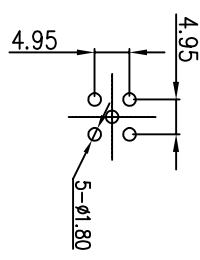


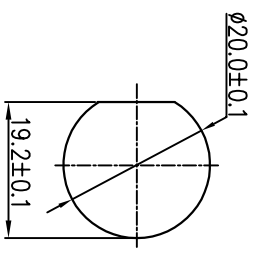
REV.	EON NO.	DESCRIPTION	SIGN	DATE
C1	N/A	INITIAL DRAWING	Liu	2020/05/17



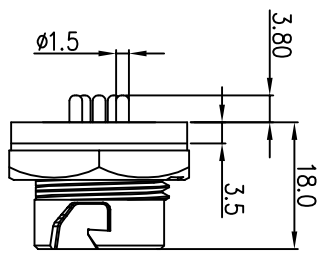
5 Pin

6 Pin

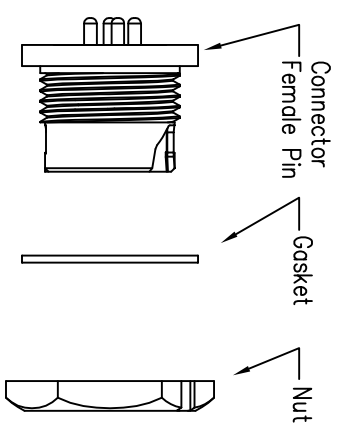
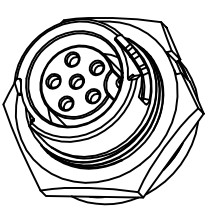
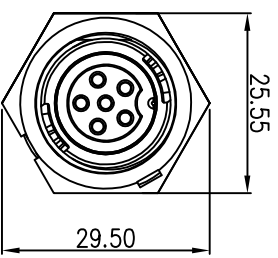
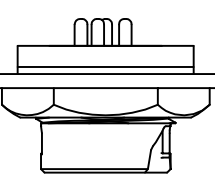
PCB Layout



Recommended Panel Cut-Out



Panel T: Max 2.5mm



Specification:

1. Operation Temperature: -45°C~105°C.
2. Insulation Resistance: 100MΩ at DC500V.
3. Contact Resistance: <10mΩ
4. Withstand Voltage: 1500V AC
5. Operating Current: 10A
6. Operating Voltage: AC 125V
7. Waterproof Rate: IP67 (Mated)
8. Housing: Nylon, Black
9. Female Pin: Copper Alloy, Gold Plated
10. Gasket: Silicon Gray
11. Panel Nut: Nylon, Blue
12. Torque Rate: 0.8~1.0N • m
13. RoHS Compliant.
14. Mating Cap P/N: 806-00047-00

UNIT:mm		DESCRIPTION		PART NO		DRAWN BY		DATE	
TOLERANCE		Middle Series Push Lock		23XXX635-02		Liu		2020/05/17	
.X ±0.25		Front Mount With Female Pin		DWG NO		CHECKED BY		DATE	
.XX ±0.15		SCALE: 1:1		C1		Mo		2020/05/17	
.XXX ±0.05		REV: C1		SIZE A4		APPROVED BY		DATE	
ANGLES 5°		SHEET 1 OF 1		* : Inspection Item		Adley		2020/05/17	