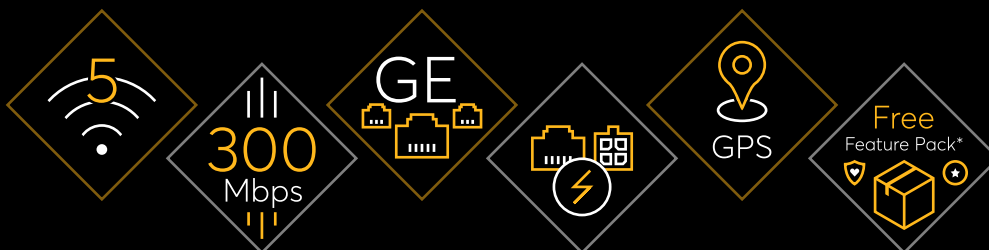




# BR1 Mini

Durable. Unbeatable Price Performance.



\* Receive a complimentary feature pack by adding a PrimeCare plan (available in 2 or 4 year options) upon device purchase. Contact your reseller for more information.

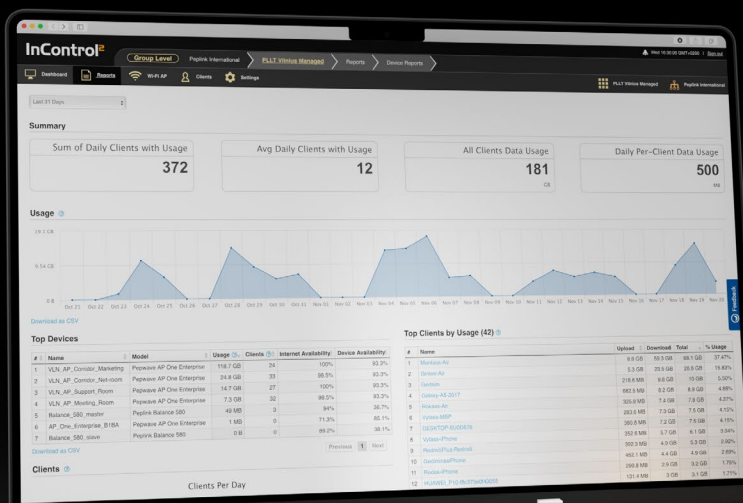


## Just one remarkable device

Engineered with the highest quality build in mind. Sleek outside, yet ruggedized inside, this device has been built to withstand whatever deployment scenario thrown at it.

## Stay in touch with InTouch

InTouch extends your reach to third party devices connected to the BR1 Mini. Remotely view, configure or troubleshoot third party devices, all within the InControl2 environment, eliminating the need for a separate and costly OOBM infrastructure.



## Manage with confidence

Control the BR1 Mini using InControl2 cloud-based endpoint management system. Generate useful reports and push configurations, as you remotely access any Peplink device with ease.

# InControl<sup>2</sup>





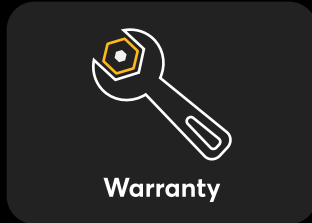
PrimeCare

## Now Available on PrimeCare

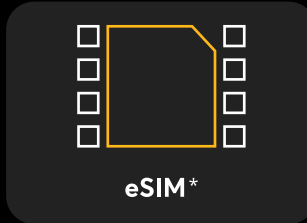
Launching the new BR1 Mini on PrimeCare, giving the device prime access to InControl2, eSIM compatibilities, increased VPN throughput, more PepVPN peers, standard warranty & support and more!



InControl<sup>2</sup>



Warranty



eSIM\*



5 pepvpn Peers

\* Feature will be available soon.



Feature Pack<sup>^</sup>

## It just keeps getting better

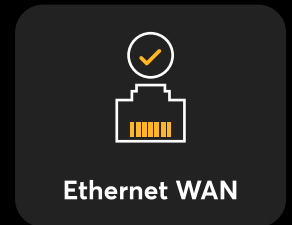
Make sure you don't miss out on the Feature Pack, which includes WAN Activation, Wi-Fi WAN, Hot Failover, WAN Smoothing, GPIO, Ignition Sensing, and more!



Ignition Sensing



Wi-Fi WAN



Ethernet WAN

<sup>^</sup> Receive a complimentary feature pack by adding a PrimeCare plan (available in 2 or 4 year options) upon device purchase. Contact your reseller for more information.

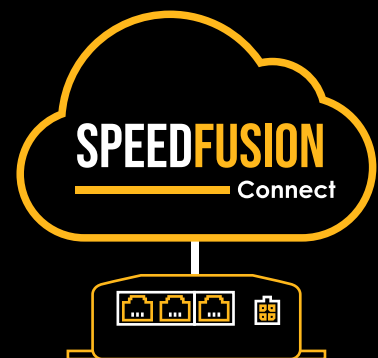
## Plug and play, anyone?

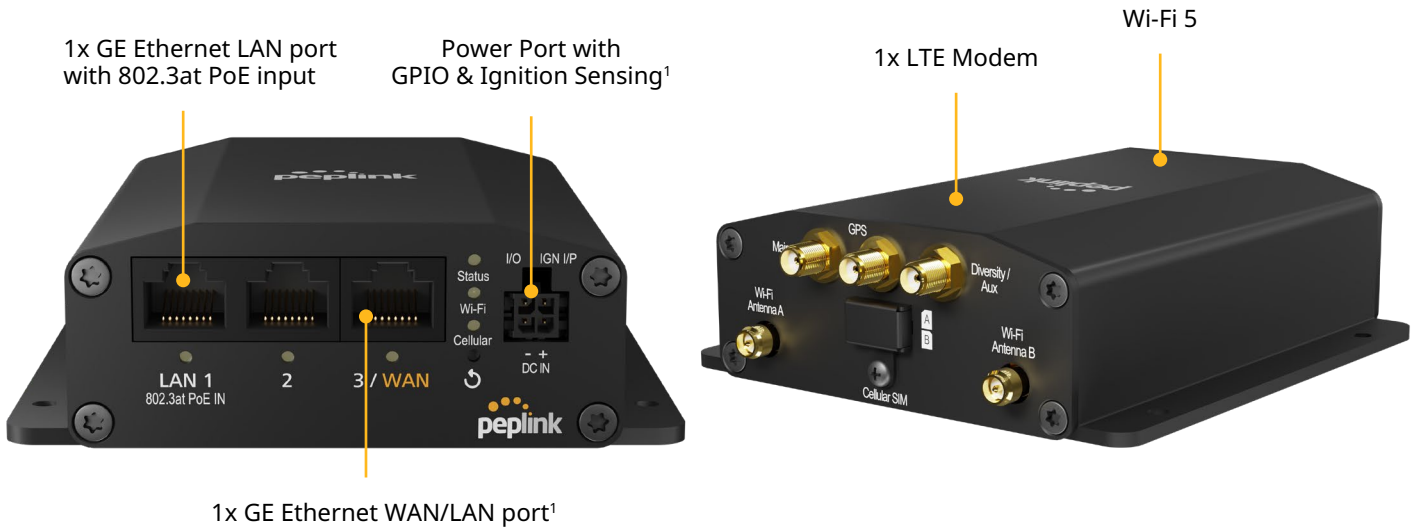
SpeedFusion Connect\* services makes the BR1 Mini the ultimate plug-and-play device. Power up, switch on, and get connected. SpeedFusion Connect also works with Peplink technologies such as Hot Failover<sup>^</sup>, ensuring reliable connectivity is accessible at all times.

[Subscribe to SpeedFusion Connect Services](#)

\* SpeedFusion Connect is available in select countries and regions. [Learn more.](#)

<sup>^</sup> Feature Pack is required to utilise the benefits of Peplink technology and services.





## Specifications

<b>WAN Interface</b>	1x 10/100/1000M Ethernet <sup>1</sup> 1x Embedded Cellular Modem with Redundant SIM Slots	<b>Antenna Connectors</b>	2x SMA Cellular Antenna Connectors 2x RP-SMA Wi-Fi Antenna Connectors 1x SMA GPS Antenna Connector
<b>LAN Interface</b>	2x 10/100/1000M Ethernet	<b>Power Input</b>	Power Port: 10V – 30V DC AC Adapter: AC Input 100V–240V / DC Output 12V Power over Ethernet 802.3at
<b>Wi-Fi Interface</b>	Simultaneous Dual-Band (2.4GHz / 5GHz) Wi-Fi 5, 2X2 MIMO Wi-Fi WAN <sup>1</sup> and/or AP	<b>Power Consumption</b>	13W (nominal), 18W (max.)
<b>SpeedFusion features</b>	Hot Failover <sup>1</sup> / WAN Smoothing <sup>1</sup>	<b>Dimension</b>	5.0 x 4.2 x 1.4 inches / 125.7 x 107 x 35 mm
<b>Number of PepVPN SpeedFusion Peers</b>	2 / 5 <sup>2</sup>	<b>Weight</b>	0.95 pounds / 430 grams
<b>Feature</b>	GPIO <sup>1</sup> , Ignition Sensing <sup>1</sup>	<b>Operating Temperature</b>	-40° – 149°F / -40° – 65°C
<b>Router Throughput</b>	300Mbps	<b>Humidity</b>	15% – 95% (non-condensing)
<b>PepVPN Throughput (No Encryption)</b>	80Mbps	<b>Certifications</b>	FCC, CE, RoHS
<b>PepVPN Throughput (256-bit AES)</b>	20 Mbps / 60Mbps <sup>2</sup>	<b>Package Content</b>	1x BR1 Mini 2x LTE Antennas (ACW-235) 2x Dual Band Wi-Fi Antennas (ACW-342) 1x GPS Active Antenna (ACW-232) 1x 12V 2A 4pin Power Supply (ACW-632)
<b>Recommended Users</b>	1-60	<b>Warranty</b>	1-Year Limited Warranty
<b>Cellular Data Rate<sup>3</sup> (Downlink/Uplink)</b>	CAT-7: 300 Mbps/150 Mbps CAT-6: 300 Mbps/50 Mbps CAT-4: 150 Mbps/50 Mbps		

<sup>1</sup> Available with a feature pack add-on license.

<sup>2</sup> Requires a PrimeCare subscription, complimentary for the first year.

<sup>3</sup> Maximum theoretical data rate.

Specifications are subject to change without notice.

## Ordering Information

Product Code	Regions <sup>^</sup>	LTE Bands	3G Bands
MAX-BR1-MINI-LTEA-US-T-PRM Embedded Modem(s): 1x CAT-7	Primary: North America*  *US Carrier Certifications: AT&T, T-Mobile, Verizon	B2, B4, B5, B7, B12, B13, B14, B25, B26, B41, B42, B43, B48, B66, B71	HSPA+: B2, B4, B5
MAX-BR1-MINI-LTEA-W-T-PRM Embedded Modem(s): 1x CAT-6	Primary: North America*, EMEA  *US Carrier Certifications: AT&T, T-Mobile(Pending), Verizon	B1, B2, B3, B4, B5, B7, B8, B12, B13, B20, B25, B26, B29, B30, B41	WCDMA/HSPA+/DC-HSPA+: B1, B2, B3, B4, B5, B8
MAX-BR1-MINI-LTE-US-T-PRM Embedded Modem(s): 1x CAT-4	Primary: North America*  *US Carrier Certifications: AT&T, T-Mobile, Verizon	B2, B4, B5, B12, B13, B14, B66, B71	WCDMA/HSPA+/DC-HSPA+: B2, B5
MAX-BR1-MINI-LTE-E-T-PRM Embedded Modem(s): 1x CAT-4	Primary: APAC, EMEA	B1, B3, B5, B7, B8, B20, B38, B40, B41	WCDMA/HSPA+/DC-HSPA+: B1, B5, B8
MAX-BR1-MINI-LTE-MX-T-PRM Embedded Modem(s): 1x CAT-4	Primary: Latin America, Australia	B1, B2, B3, B4, B5, B7, B8, B28, B40	WCDMA/HSPA+/DC-HSPA+: B1, B2, B5, B8

<sup>^</sup> Regions are for reference only. For specific location compatibility, please refer to the bands.

## Featured Add-on

Product Code	Description
PRM-MAX-BR1-MINI-1Y	1-Year PrimeCare for BR1 Mini
PRM-MAX-BR1-MINI-2Y	2-Year PrimeCare for BR1 Mini
PRM-MAX-BR1-MINI-4Y	4-Year PrimeCare for BR1 Mini
MAX-BR1-MINI-LC-FP	Feature pack for BR1 Mini enables Ethernet WAN, Wi-Fi WAN, Hot Failover, WAN Smoothing, GPIO and Ignition Sensing
MAX-BR1-MINI-BD-FP-2Y	MAX BR1 Mini Bundle Offer - 2 year PrimeCare extension & complimentary feature pack
MAX-BR1-MINI-BD-FP-4Y	MAX BR1 Mini Bundle Offer - 4 year PrimeCare extension & complimentary feature pack
ANT-MB-22G-S-B-6	5-in-1 Cellular and Wi-Fi Antenna System with GPS Receiver (Black)
ANT-MB-22G-S-W-6	5-in-1 Cellular and Wi-Fi Antenna System with GPS Receiver (White)