

2 x R5.88

1.83

2 x R10.16

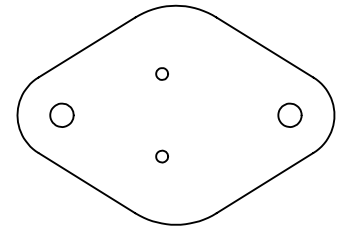
10.92

28.96

2 Holes 1.57 Dia.

30.15

2 Holes 3.10 Dia.



REFERENCE VIEW

Scale: Full Size

UNLESS OTHERWISE SPECIFIED:
DIMENSIONS ARE IN Millimetres
SURFACE FINISH:
TOLERANCES:
LINEAR:
ANGULAR:

DEBUR AND
BREAK SHARP
EDGES

DC0001/05-Material Ref.-Thickness

Ordering No. DC0001/05-TI900-0.12-2A

MATERIAL:
t-Global TI900
Electrical
Insulator Pad

TITLE:
**t-Global
Technology**



	NAME	DATE
DRAWN	L. Simpson	18 th March 2012
CHK'D		
APPV'D		
MFG		
Q.A		

PART No. **DC0001/05-TI900-0.12-2A**

A4

WEIGHT:

SCALE: 2:1

SHEET 1 OF 1