

**NOTE:**

- MATERIAL**  
 HOUSING : HIGH TEMPERATURE THERMOPLASTIC, UL 94V-0, COLOR- BIEGE  
 TERMINAL 1 & 2 - BRASS  
 TERMINAL 3 - PHOSPHOR BRONZE
- FINISH :**  
 TERMINAL 1 : 2.54 MICROMETER MIN TIN OVER 2.54- 3.81 MICROMETER MIN NICKEL OVERALL  
 TERMINAL 2 : 2.54 MICROMETER MIN SELECTIVE TIN (MATTE) OVER 1.27-2.54 MICROMETER MIN NICKEL OVERALL  
 TERMINAL 3: 2.54 MICROMETER MIN SELECTIVE TIN (MATTE) OVER 2.54-3.81 MIN NICKEL OVERALL
- RECOMMENDED PCB THICKNESS 1.57 MM**

PART NO.	REMARKS	STATUS
36558-0001	TERMINAL 1 (CENTRE PIN) RECESSED BY 2MM	ACTIVE
36558-0002	TERMINAL 1 (CENTRE PIN) WITHOUT RECESS	VOID
36558-0003	TERMINAL 1 (CENTRE PIN) RECESSED BY 2MM	ACTIVE

ROHS COMPLIANT

EC NO: I2005-0216 DRWN:SSUDHIR 2005/05/13 CHKD:KPRASAD 2005/05/13 APPR:KPRASAD 2005/05/13	QUALITY SYMBOLS $\blacktriangledown = 0$ $\triangleleft = 0$	GENERAL TOLERANCES (UNLESS SPECIFIED)		DIMENSION STYLE <b>MM ONLY</b>		SCALE <b>4:1</b>	DESIGN UNITS <b>METRIC</b>	THIRD ANGLE PROJECTION	
		4 PLACES $\pm$ --- $\pm$ --- 3 PLACES $\pm$ --- $\pm$ --- 2 PLACES $\pm$ 0.2 $\pm$ --- 1 PLACE $\pm$ 0.2 $\pm$ --- ANGULAR $\pm$ 2 °	DRAWN BY S.S	DATE 15/07/01	TITLE <b>DC POWER JACK          RIGHT ANGLED</b>		APPROVED BY G.L	DATE 15/07/01	<b>MOLEX INCORPORATED</b>
DRAFT WHERE APPLICABLE MUST REMAIN WITHIN DIMENSIONS	MATERIAL NO. <b>SEE CHART</b>	DOCUMENT NO. <b>SD-36558-001</b>	SHEET NO. <b>1 OF 2</b>		THIS DRAWING CONTAINS INFORMATION THAT IS PROPRIETARY TO MOLEX INCORPORATED AND SHOULD NOT BE USED WITHOUT WRITTEN PERMISSION				

7 6 5 4 3 2 1

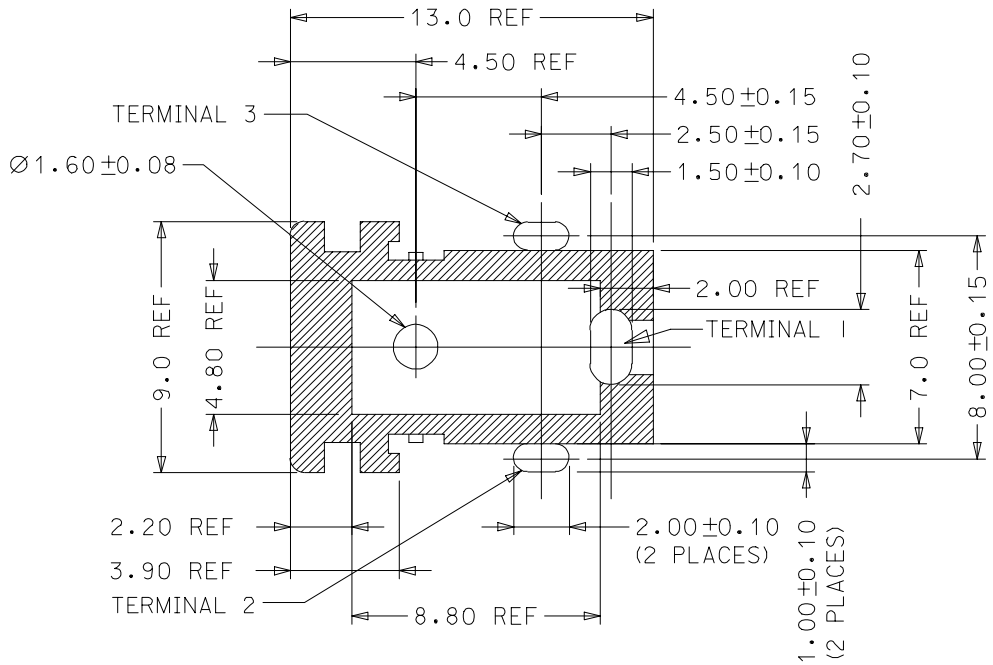
E

D

C

B

A



RECOMMENDED PCB LAYOUT  
TOP VIEW COMPONENT SIDE

EC NO: 12005-0216 DRWN: SSUDHIR 2005/05/13 CHKD: KPRASAD 2005/05/13 APPR: KPRASAD 2005/05/13	QUALITY SYMBOLS $\blacktriangledown = 0$ $\triangleleft = 0$	GENERAL TOLERANCES (UNLESS SPECIFIED)		DIMENSION STYLE MM ONLY		SCALE 10:1	DESIGN UNITS METRIC	THIRD ANGLE PROJECTION		
			mm	INCH	DRAWN BY	DATE	TITLE DC POWER JACK RIGHT ANGLED			
		4 PLACES	$\pm$ ---	$\pm$ ---	S.S	15/07/01				
		3 PLACES	$\pm$ ---	$\pm$ ---	CHECKED BY	DATE	MOLEX INCORPORATED			
2 PLACES	$\pm 0.2$	$\pm$ ---	G.L	15/07/01						
1 PLACE	$\pm 0.2$	$\pm$ ---	APPROVED BY	DATE	MOLEX INCORPORATED DOCUMENT NO. SD-36558-001 SHEET NO. 2 OF 2					
			G.L	15/07/01						
		ANGULAR $\pm 2^\circ$		MATERIAL NO. SEE CHART						
DRAFT WHERE APPLICABLE MUST REMAIN WITHIN DIMENSIONS				SIZE A4		THIS DRAWING CONTAINS INFORMATION THAT IS PROPRIETARY TO MOLEX INCORPORATED AND SHOULD NOT BE USED WITHOUT WRITTEN PERMISSION				

6

5

4

3

2

1