

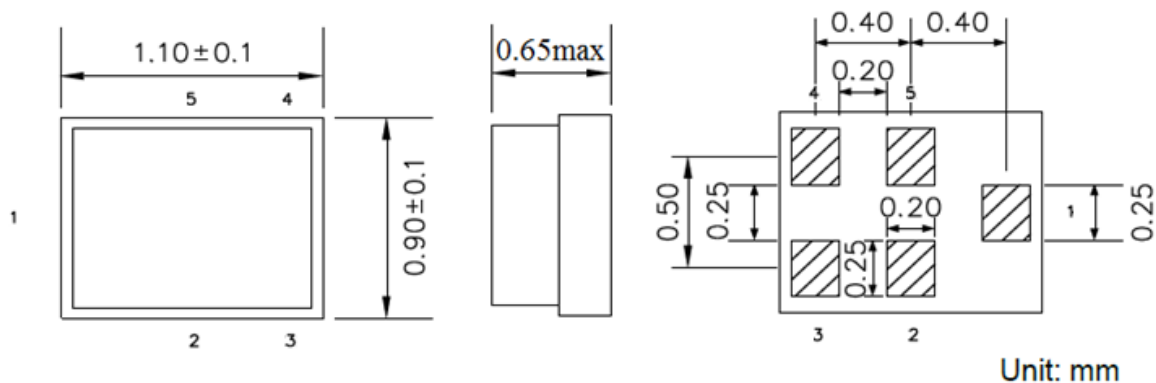
RSF-2350.000-100000-1109-TR-NS5

- ❖ Low-Loss RF Filter for Mobile Telephone Band 40 systems, Receive Path (RX).
- ❖ Useable Passband 100 MHz.
- ❖ Suitable for Diversity Applications.
- ❖ Unbalanced to Balanced Operation.
- ❖ RoHS Compatible.

Electrical Specification

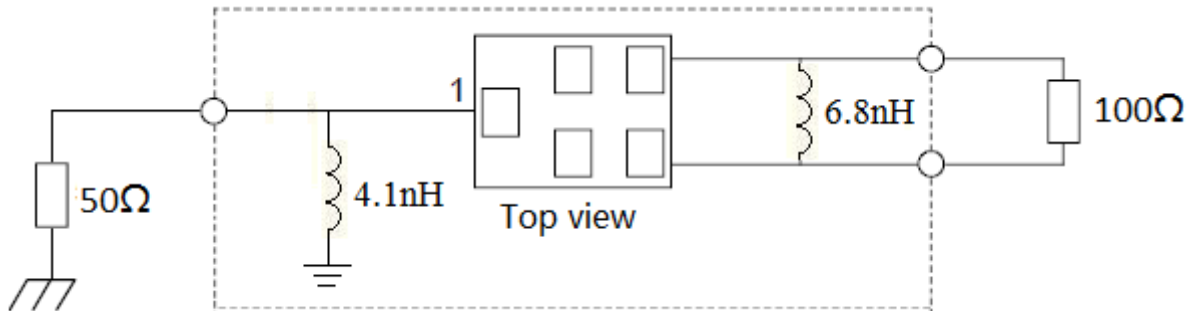
Parameters		Value	Unit
Insertion Loss, typ/max	2300 ~ 2400 MHz	2.5 / 3.3	dB
Amplitude Ripple, typ/max	2300 ~ 2400 MHz	0.8 / 1.4	dB
VSWR, typ/max	2300 ~ 2400 MHz	1.5 / 2.0	-
Amplitude Balance, typ/max	2300 ~ 2400 MHz	-1.7 / 1.3 / 1.7	dB
Phase Noise	2300 ~ 2400 MHz	170 / 185.5 / 190	°
Attenuation, min/typ	0.1 ~ 1785 MHz	-40 / -45	dB
	1850 ~ 1980 MHz	-38 / -43	dB
	1981 ~ 2185 MHz	-30 / -39	dB
	2185 ~ 2215 MHz	-32 / -39	dB
	2216 ~ 2240 MHz	-20 / -24	dB
	2430 ~ 2459 MHz	-15 / -34	dB
	2460 ~ 2484 MHz	-28 / -34	dB
	2484 ~ 3409 MHz	-28 / -33	dB
	3410 ~ 3500 MHz	-38 / -44	dB
4600 ~ 4800 MHz	-42 / -48	dB	
DC Voltage		5	V
Input Power, max	@ 2000 h	15	dBm
ESD Voltage ESD (MM)		50	VDC
Sensitive Discharge Device ESD (HBM)		175	VDC
Terminating Source Impedance, unbalanced		50 // 4.1	Ω // nH
Terminating Load Impedance, balanced		150 or 100	Ω
Operating Temperature Range		-30 ~ +85	°C
Storage Temperature Range		-40 ~ +85	°C

Dimensions

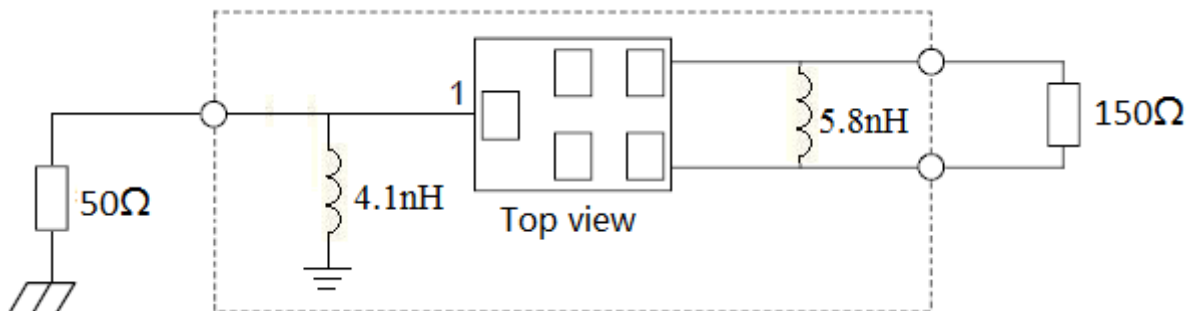


PIN #	PIN NAME	DESCRIPTION
1	IN	Input
2	GND	Ground
3	GND	Output Balanced
4	OUT	Output Balanced
5	GND	Ground

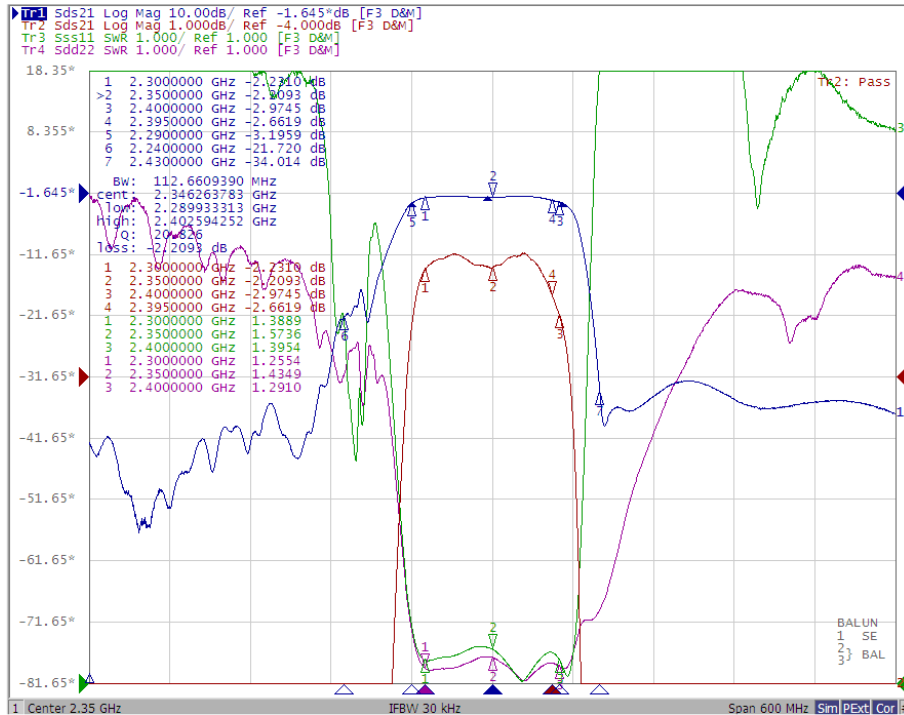
Test Circuit



OR



Frequency Characteristics



Environmental

PARAMETER	VALUE
MOISTURE SENSITIVITY LEVEL	2
REACH – SVHC	Compliant
RoHS	Compliant

APPROVAL

DRAWN BY	AR, August 19, 2021
APPROVED BY	CP, August 19, 2021
REVISION	A, Initial Release

Raltron Electronics / RAMI Technology USA, LLC, including its affiliates, employees, agents and other persons acting on its behalf (collectively Raltron/RAMI Tech), disclaim any and all liability for any errors or inaccuracies contained in this data sheet. While Raltron/RAMI Tech has made every reasonable effort to ensure the accuracy of all product information, specifications and data contained herein, Raltron/RAMI Tech does not guarantee that the information is accurate, reliable or current. The product information is provided only for reference purposes only and is subject to change, correction or revision, at any time without notice. Raltron/RAMI Tech does not assume any liability arising out of an application or use of any product described herein and disclaims any warranties expressed or implied. The user of products in such applications shall assume all risks of such use and will agree to hold Raltron/RAMI Tech, harmless against all damages.

Copyright © 2016, Raltron Electronics / RAMI Technology USA, LLC. All rights reserved. No part of this document may be reproduced in any form without the prior written permission of Raltron Electronics / RAMI Technology USA, LLC.