

Design Change Notification

December 29th, 2021

To: Sanyo Denki America Cooling Distributors

Product: BLDC FAN MOTOR

Model: San Ace 40 (9GA) 40mm sq. x 20mm thick

(Please refer Attached Sheet for a complete part number list.)

SANYO DENKI CO., LTD.
Design Dept., Cooling Systems Div.

Approved	Checked	Designed
		

SANYO DENKI America, Inc.
Cooling Systems Division

No.	Contents	Before Change	After Change	Description
1	Motor drive IC, electronic parts, Motor Windings and PWB	Use motor drive IC manufactured by ON-Semiconductor.	Use motor drive IC manufactured by New-Japan-Radio.	Change to the motor drive IC due to discontinuation of production by the semiconductor manufacturer. Also change to some electric parts except IC, Motor windings and PWB due to the change of the motor drive IC.
2	Specifications	See the Attached Sheet.	See the Attached Sheet.	
3	Implementation Date			Implementation Date: From October, 2022 production (Estimated). Please note that the changeover schedule to new IC may change according to the number of products in the inventory.

No. A0052585 - Attached Sheet 1

[MODEL LIST]

San Ace 40 (9GA) – 40mm x 20mm thick

MODEL	Change contents
9GA0424G6001 9GA0424G6002 9GA0424G6003 9GA0424G6004 9GA0424G6D001 9GA0424G6D003	Attached Sheet 2
9GA0424H6001 9GA0424H6002 9GA0424H6003 9GA0424H6004 9GA0424H6D001 9GA0424H6D003 9GA0424H6D004	Attached Sheet 3
9GA0424F6001 9GA0424F6002 9GA0424F6D001	Attached Sheet 4
9GA0424P6G001	Attached Sheet 5
9GA0424P6H001 9GA0424P6H004 9GA0424P6H006 9GA0424P6H007 9GA0424P6H003 9GA0424P6H004	Attached Sheet 6
9GA0424P6F001 9GA0424P6F003 9GA0424P6F004 9GA0424P6FD001	Attached Sheet 7

No. A0052585 - Attached Sheet 2

[MODEL]

9GA0424G6001, 9GA0424G6002, 9GA0424G6003, 9GA0424G6004, 9GA0424G6D001, 9GA0424G6D003

[Contents of change]

	Before Change	After Change
Motor drive IC	LV8860 By On-semiconductor	NJW4320 By New-Japan-Radio
Operating voltage	No change	
Electrical current	No change	
Speed	No change	
Operating temp.	No change	
Sound pressure level	No change	
Control terminal	Non-applicable	
Air flow – static pressure character	No change	
PWM duty cycle - Speed characteristic	Non-applicable	
Sensor spec.	No change	

No. A0052585 - Attached Sheet 3

[MODEL]

9GA0424H6001, 9GA0424H6002, 9GA0424H6003, 9GA0424H6004,
 9GA0424H6D001, 9GA0424H6D003, 9GA0424H6D004

[Contents of change]

	Before Change	After Change
Motor drive IC	LV8860 By On-semiconductor	NJW4320 By New-Japan-Radio
Operating voltage	No change	
Electrical current	No change	
Speed	No change	
Operating temp.	No change	
Sound pressure level	No change	
Control terminal	Non-applicable	
Air flow – static pressure character	No change	
PWM duty cycle - Speed characteristic	Non-applicable	
Sensor spec.	No change	

No. A0052585 - Attached Sheet 4

[MODEL]

9GA0424F6001, 9GA0424F6002, 9GA0424F6D001

[Contents of change]

	Before Change	After Change
Motor drive IC	LV8860 By On-semiconductor	NJW4320 By New-Japan-Radio
Operating voltage	No change	
Electrical current	No change	
Speed	No change	
Operating temp.	No change	
Sound pressure level	No change	
Control terminal	Non-applicable	
Air flow – static pressure character	No change	
PWM duty cycle - Speed characteristic	Non-applicable	
Sensor spec.	No change	

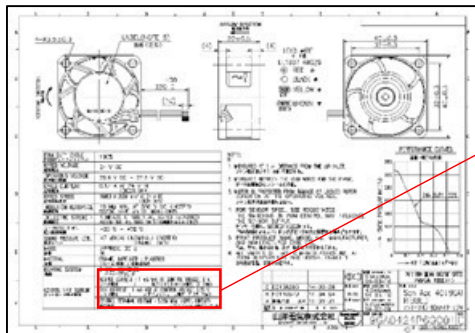
No. A0052585 - Attached Sheet 5

[MODEL]

9GA0424P6G001

[Contents of change]

	Before Change	After Change
Motor drive IC	LV8860 By On-semiconductor	NJW4320 By New-Japan-Radio
Operating voltage	No change	
Electrical current	No change	
Speed	No change	
Operating temp.	No change	
Sound pressure level	No change	
Control terminal	Source current: 1 mA MAX. Refer to below drawing	Source current: 2 mA MAX. Refer to below drawing
Air flow – static pressure character	No change	
PWM duty cycle - Speed characteristic	No change	
Sensor spec.	No change	



Before Change

SOURCE CURRENT : 1 mA MAX. AT CONTROL VOLTAGE 0 V ソース電流 : 以下 (コントロール電圧 0 V時)
SINK CURRENT : 1 mA MAX. AT CONTROL VOLTAGE 5.25 V シンク電流 : 以下 (コントロール電圧 5.25 V時)
CONTROL TERMINAL VOLTAGE : 5.25 V MAX. (OPEN CIRCUIT) 端子電圧 : 以下 (コントロール端子オープン時)

After Change

SOURCE CURRENT : 2 mA MAX. AT CONTROL VOLTAGE 0 V ソース電流 : 以下 (コントロール電圧 0 V時)
SINK CURRENT : 1 mA MAX. AT CONTROL VOLTAGE 5.25 V シンク電流 : 以下 (コントロール電圧 5.25 V時)
CONTROL TERMINAL VOLTAGE : 5.25 V MAX. (OPEN CIRCUIT) 端子電圧 : 以下 (コントロール端子オープン時)

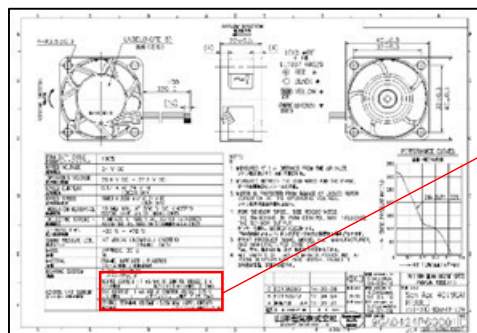
No. A0052585 - Attached Sheet 6

[MODEL]

9GA0424P6H001, 9GA0424P6H004, 9GA0424P6H006, 9GA0424P6H007,
9GA0424P6HD003, 9GA0424P6H004

[Contents of change]

	Before Change	After Change
Motor drive IC	LV8860 By On-semiconductor	NJW4320 By New-Japan-Radio
Operating voltage	No change	
Electrical current	No change	
Speed	No change	
Operating temp.	No change	
Sound pressure level	No change	
Control terminal	Source current: 1 mA MAX. Refer to below drawing	Source current: 2 mA MAX. Refer to below drawing
Air flow – static pressure character	No change	
PWM duty cycle - Speed characteristic	No change	
Sensor spec.	No change	



Before Change

SOURCE CURRENT : 1 mA MAX. AT CONTROL VOLTAGE 0 V ソース電流 : 以下 (コントロール電圧 0 V時)
SINK CURRENT : 1 mA MAX. AT CONTROL VOLTAGE 5.25 V シンク電流 : 以下 (コントロール電圧 5.25 V時)
CONTROL TERMINAL VOLTAGE : 5.25 V MAX. (OPEN CIRCUIT) 端子電圧 : 以下 (コントロール端子オープン時)

After Change

SOURCE CURRENT : 2 mA MAX. AT CONTROL VOLTAGE 0 V ソース電流 : 以下 (コントロール電圧 0 V時)
SINK CURRENT : 1 mA MAX. AT CONTROL VOLTAGE 5.25 V シンク電流 : 以下 (コントロール電圧 5.25 V時)
CONTROL TERMINAL VOLTAGE : 5.25 V MAX. (OPEN CIRCUIT) 端子電圧 : 以下 (コントロール端子オープン時)

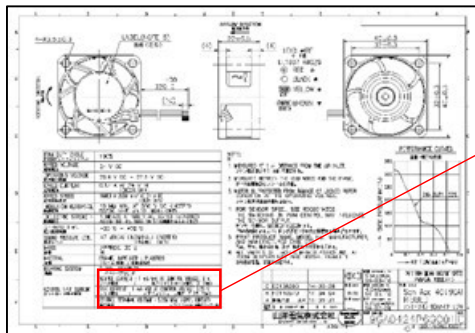
No. A0052585 - Attached Sheet 7

[MODEL]

9GA0424P6F001, 9GA0424P6F003, 9GA0424P6F004, 9GA0424P6FD001

[Contents of change]

	Before Change	After Change
Motor drive IC	LV8860 By On-semiconductor	NJW4320 By New-Japan-Radio
Operating voltage	No change	
Electrical current	No change	
Speed	No change	
Operating temp.	No change	
Sound pressure level	No change	
Control terminal	Source current: 1 mA MAX. Refer to below drawing	Source current: 2 mA MAX. Refer to below drawing
Air flow – static pressure character	No change	
PWM duty cycle - Speed characteristic	No change	
Sensor spec.	No change	



Before Change

SOURCE CURRENT : 1 mA MAX. AT CONTROL VOLTAGE 0 V ソース電流 : 以下 (コントロール電圧 0 V時)
SINK CURRENT : 1 mA MAX. AT CONTROL VOLTAGE 5.25 V シンク電流 : 以下 (コントロール電圧 5.25 V時)
CONTROL TERMINAL VOLTAGE : 5.25 V MAX. (OPEN CIRCUIT) 端子電圧 : 以下 (コントロール端子オープン時)

After Change

SOURCE CURRENT : 2 mA MAX. AT CONTROL VOLTAGE 0 V ソース電流 : 以下 (コントロール電圧 0 V時)
SINK CURRENT : 1 mA MAX. AT CONTROL VOLTAGE 5.25 V シンク電流 : 以下 (コントロール電圧 5.25 V時)
CONTROL TERMINAL VOLTAGE : 5.25 V MAX. (OPEN CIRCUIT) 端子電圧 : 以下 (コントロール端子オープン時)