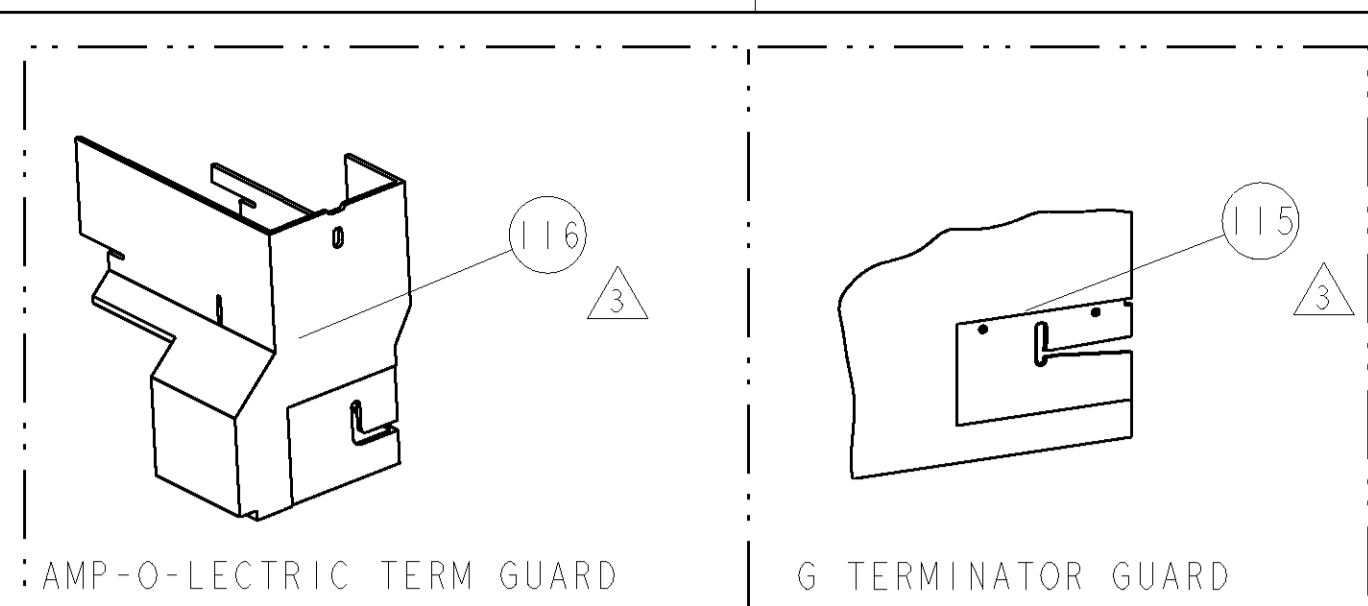


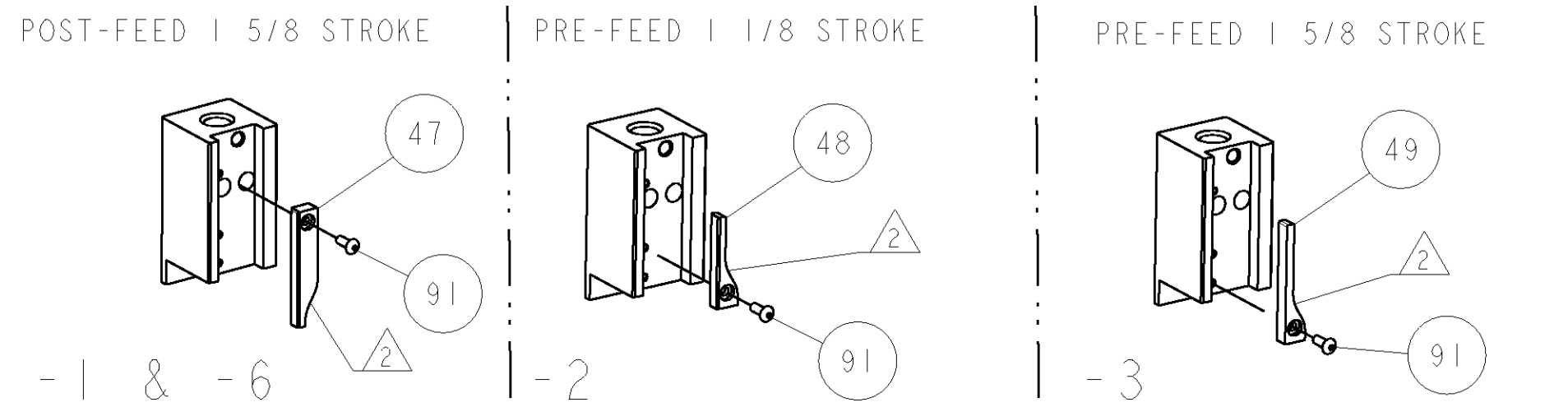
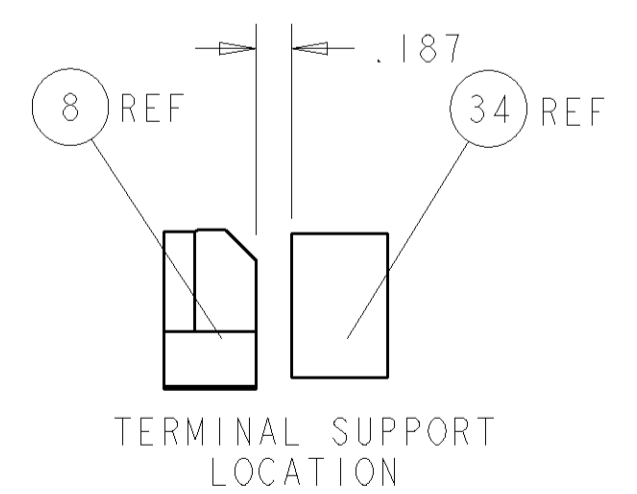
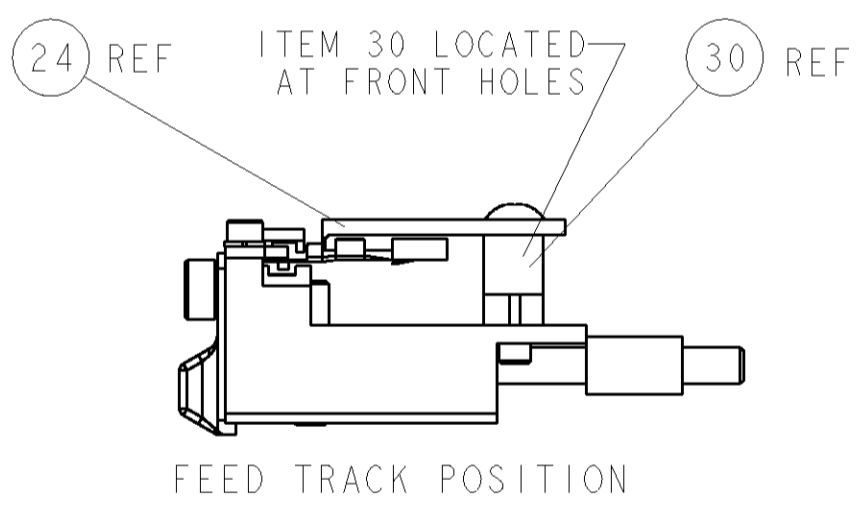
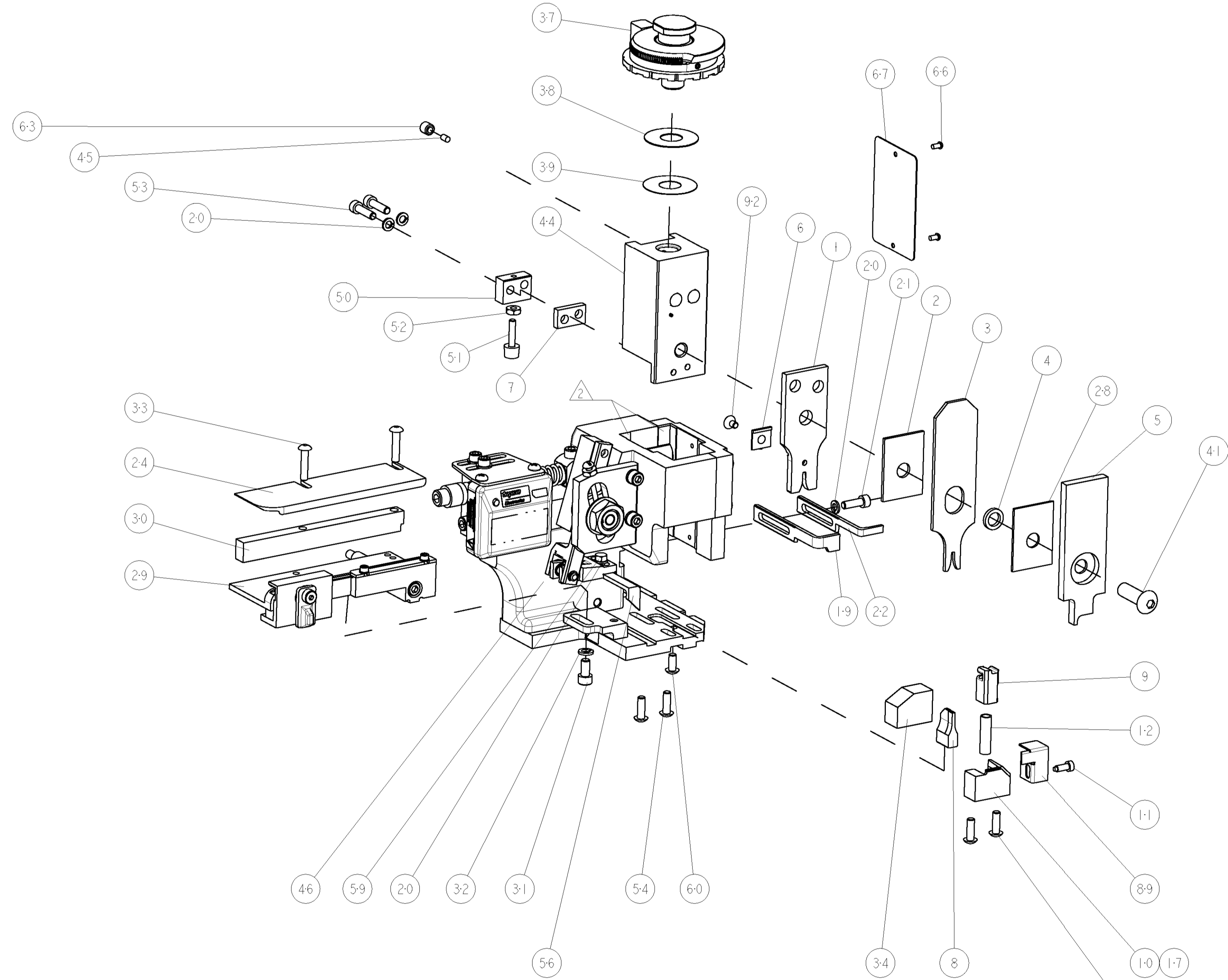
PART NUMBER	REV	FIRST USED	POWER UNIT	FEED TYPE	DESCRIPTION
1855143-1	B	122500-1	LEADMAKER	POST FEED	CUTS CARRIER
1855143-2	B	565435-5	BENCH MODEL K	PRE FEED	CUTS CARRIER
1855143-3	B	354500-1	BENCH MODEL G	PRE FEED	CUTS CARRIER
1855143-6	B	122500-1	LEADMAKER	POST FEED	CONTINUOUS CARRIER
7-1855143-7	A	-	-	-	SPARE PARTS



TERMINAL NAME: .040 SERIES FEMALE RECEPTACLE						
SOCKET	PIN	AMP TERMINAL - AMP CRIMP SPECS		REF SETTING		
638187-3	-	CRIMP HEIGHT		WIRE SIZE	REF SETTING	
638009-5	-	1.27±0.05mm [.050±.002]		1mm2	B9	
638098-7	-	1.23±0.05mm [.048±.002]		18AWG	C2	
638099-7	-	1.17±0.05mm [.046±.002]		0.75mm2	C6	
-	-	1.10±0.05mm [.043±.002]		20AWG	D1	
-	-	CRIMP	SIZE	TYPE	RANGE	
-	-	WIRE	1.68mm [.066]	F	0.50-1mm2	
-	-	INSUL	2.03mm [.080]	F	∅1.2-1.9mm	
WIRE STRIP LENGTH	TERM APPL SPEC	FEED	APPLICATOR INSTRUCTIONS		SET UP GAGE	
4.8 - 5.6mm	114-6063	11.51mm	408-8040		458637-1	
ADDITIONAL CRIMP HEIGHTS						
CRIMP HEIGHT		WIRE SIZE		REF SETTING		
1.04±0.05mm [.041±.002]		0.5mm2		D6		

- △ RECOMMENDED SPARE PARTS
- △ GREASE LIGHTLY
- △ GUARD MUST BE IN PLACE WHEN OPERATING APPLICATOR IN A BENCH MACHINE

*** WARNING**
ON INSTALLATION, SET WIRE DISC TO LARGEST WIRE SIZE SETTING. USE OF SETTINGS BELOW MIN. REQUIRED CRIMP HEIGHT SETTING WILL CAUSE DAMAGE TO CRIMP TOOLING.



QTY	REF	DESCRIPTION	ITEM NO
1	REF	GUARD WINDOW	116
1	REF	INSERT, GUARD	115
1	1	SCR, FLT SKT HD CAP 6-32 X .250	92
1	1	SCR, BTN SKT HD CAP 6-32 X .375	91
1	1	GUARD, FRONT CHIP	89
1	1	SF APPL INST 408-8040	72
1	1	GENERAL INSTRUCTION PKG	71
1	1	PLATE, IDENTIFICATION	67
2	2	SCREW, DRIVE	66
1	1	SCR, SET, SELF LOCKING 1/4-20 X .250	63
1	1	SCR, BHSC, SELF-LOCKING, 8-32 X .375	60
1	1	SCR, HEX HD CAP 8-32 X .312	59
1	1	PAWL, FEED	56
4	4	SCR, BTN SKT HD CAP 8-32 X .500	54
2	2	SCR, SKT HD CAP 8-32 X .625	53
1	1	NUT, HEX, REG 6-32	52
1	1	BUMPER, HOLD DOWN	51
1	1	SPACER, TONKER	50
1	1	CAM, PRE FEED, 1 5/8	49
1	1	CAM, PRE FEED, 1 1/8	48
1	1	CAM, POST FEED, 1 5/8	47
1	1	APPL. BASIC SUB ASSY (SIDE WISE MOCA)	46
1	1	PLUG, NYLON	45
1	1	RAM, SIDE FEED	44
1	1	SCR, BTN SKT HD CAP 5/16-24 X 1.00	41
1	1	SHIM SUB-ASSY	39
1	1	SHIM	38
1	1	FINE ADJUST HEAD ASSEMBLY	37
1	1	TERMINAL SUPPORT	34
2	2	SCR, BTN SKT HD CAP 8-32 X .750	33
1	1	WASHER, SPRG LOCK, REG NO 10	32
1	1	SCR, SKT HD CAP 10-32 X .375	31
1	1	SPACER, STRIP GUIDE	30
1	1	ASSEMBLY, STRIP GUIDE	29
1	1	SPACER, CRIMPER	28
1	1	PLATE, STRIP GUIDE	24
1	1	STRIPPER	22
1	1	SCR, SKT HD CAP 8-32 X .500	21
4	4	21024-4 WASHER, SPRG LOCK, REG NO 8	20
1	1	691353-1 STRIPPER	19
1	1	1-679625-2 SHEAR HOLDER, FRONT (NO CUT)	17
1	1	3-22280-3 SPRING, COMPRESSION	12
1	1	690461-1 STOP, SHEAR	11
1	1	690459-8 SHEAR HOLDER, FRONT	10
1	1	217234-1 FLOATING SHEAR, FRONT	9
1	1	1-189717-0 ANVIL, COMBINATION	8
1	1	240641-1 SPACER	7
1	1	224405-1 DEPRESSOR, WIRE	6
1	1	1-455889-4 DEPRESSOR, SHEAR	5
1	1	2-238011-2 BLOCK, CRIMPER SPACER	4
1	1	5-456134-4 CRIMPER, INSULATION F PREMIUM	3
1	1	1-455888-5 SPACER, CRIMPER	2
1	1	856313-2 CRIMPER, WIRE	1

DIMENSIONS: INCHES 0 PLC ±.01 1 PLC ±.01 2 PLC ±.01 3 PLC ±.001 4 PLC ±.001 ANGLES ±.001		TOLERANCES UNLESS OTHERWISE SPECIFIED: FINISH: -	
MATERIAL: -		FINISH: -	
WEIGHT: -		SCALE: 3:5	
CUSTOMER DRAWING		SHEET 1 OF 1	

CUSTOMER VIEWABLE ASSEMBLY