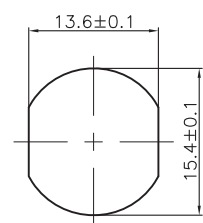
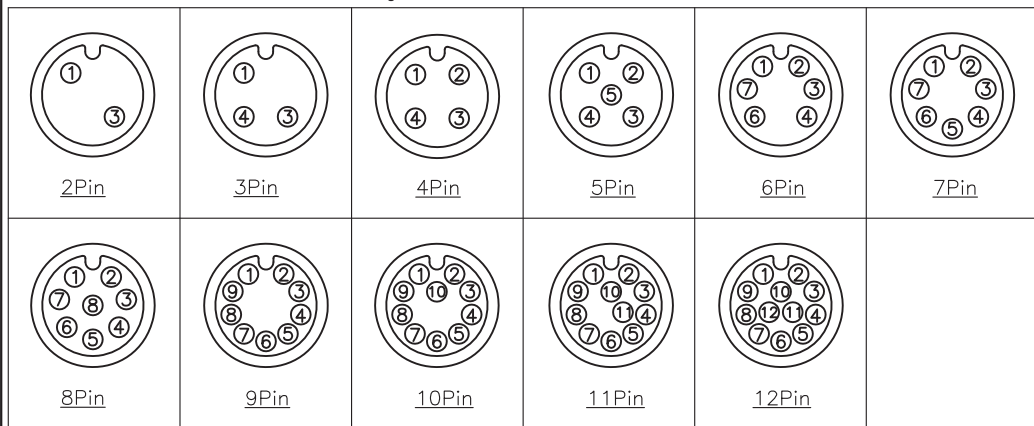


Specifications:
 Current Rating:4A(2~5P);2A(6~8P);1.5A(9~12P)AC/DC
 Voltage Rating:250V(2~4P);60V(5P);30V(6~12P)AC/DC
 Contact Resistance:5m ohm. Max.
 Insulation Resistance:100M ohm. Min.
 Withstanding Voltage:500V AC/Minute
 Waterproof rate:IP67
 Operating Temperature Range:-40°C ~ +100°C
 Material and Finish
 See Table
 How to Order
M12-XXS-FA-PBX

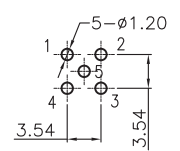


- Panel Lock Thread
- 1:PG9
- 2:M16
- Panel Mount PCB Dip
- Front Fastened A Coding Die Casting
- Socket
- No.of Contacts
- M12

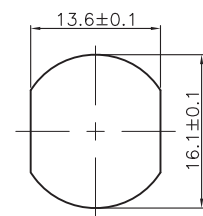
Pin Assignments Front View



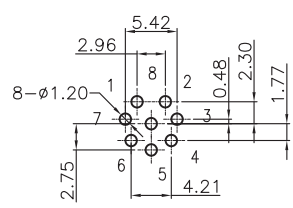
PG9 Recommended Panel CUT-Out
 Thickness:4.0mm



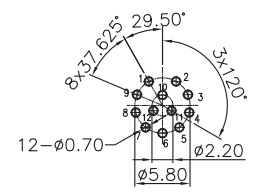
2~5P Recommended PCB Layout
 TOL:±0.05mm



M16 Recommended Panel CUT-Out
 Thickness:4.0mm



6~8P Recommended PCB Layout
 TOL:±0.05mm



9~12P Recommended PCB Layout
 Tolerance:±0.05mm

ITEM	Description	Material	Remark	Q'TY
1	Insulator	Nylon	UL94V-0 Black	1
2	Terminal	Copper Alloy	Gold Plated 1u"	2~12
3	Shell	Zinc Alloy	Nickel Plated 60u"	1
4	Seal ring	Silicone	Red	2
5	Nut	Copper Alloy	PG9 or M16 Nickel Plated 60u"	1

F				DRAWN: JOY	GENERAL TOLERANCE: .X=±0.2 .XX=±0.15 .XXX=±0.10	ON-SHORE TECHNOLOGY, INC.
E						
D				CHECKED: ANDREW	UNIT: MM	DESCRIPTION: M12 A CODE SOCKET STRAIGHT DIP TYPE
C					SCALE: 1:1	
B				APPROVAL: JOY	SHEET: 1/1	PART NO: M12-XXS-FA-PBX
A	27-MAR-2021				PROJECTION:	
REV	DATE	FILE	BY	BILL		