



USB 2.0 4-Port USB Serial DB-9 RS-232 Adapter – FTDI Chipset

Product Manual



Coolgear

Version 1.0

January 2018

Model Number: USB2-4COM-M

Revision History

Revision	Date	Author	Comments
1.0	07/06/2015	Coolgear	Old format
1.1	02/05/2018	Coolgear	New manual format

About this document

This product manual outlines installation and features of the USB2-4COM-M USB 2.0 4-Port USB Serial DB-9 RS-232 Adapter – FTDI Chipset.

Scope

The scope of this manual is to give the user of the product an understanding of its use with detailed diagrams and verbiage. The manual helps the users to apply the product to their application.

Intended Audience

This product is intended for use in office or industrial applications where serial communication between device and computer is necessary. It can be used with bar code scanners, printers, time clocks, modems and other Industrial serial RS-232 applications.

Product Support

support@coolgear.com

Table of Contents

1. Introduction	5
1.1 About the Adapter	5
1.2 Features	5
1.3 Windows 7/ Vista / 2003 / XP / 2000 Driver Installation.....	6
1.4 Check Installation.....	7
2. Uninstalling Windows 7 or Vista Drivers	10
3. RS-232 Signal Pin-outs of DB-9 Male	13
4. Notes, Tips, Warnings, and Safety	14
5. Product URL	15

Table of Figures

Figure 1 DOS Window Install	6
Figure 2 FTDI Status Ready Dialog Box	Error! Bookmark not defined.
Figure 3 Disconnect FTDI Devices Dialog Box	8
Figure 4 Uninstall all FTDI drivers Dialog Box	8
Figure 5 Cancel Driver Installation Dialog Box.....	8
Figure 6 FTDI Sytem Clean Completed Dialog Box	9
Figure 7 Add Remove Programs Dialog Box	9
Figure 8 Control Panel Dialog Box.....	10
Figure 9 COM Ports Dialog Box	10
Figure 10 Confirm Device Uninstall Dialog Box 1	11
Figure 11 Locate Device Dialog Box	11
Figure 12 Confirm Device Uninstall Dialog Box 2	12
Figure 13 DB-9 Pin Connector Pin Out Diagram	13

1. Introduction

The USB2-4COM-M USB Serial Adapter is designed to make serial port expansion quick and simple. Connecting to a USB port on your computer or USB hub, the USB Serial Adapter instantly adds serial communication port to your system. The USB2-4COM-M USB Serial Adapter provides instant connectivity to RS-232 communication device for factory automation equipment, multi-drop data collection devices, barcode readers, time clocks, scales, data entry terminal and serial communication in harsh environment. The USB to Serial Adapter is suitable for remote access, retail and industrial application, data collection and other applications requiring high speed RS-232 communication ports.

WEIGHT	1.075 lbs
UPC	729440690762
ADAPTER DIMENSIONS	171.32mm(L) x 99.95mm(W w/DB-9) x 30.06mm(H)
CABLE LENGTH	3ft.
WARRANTY	1 year from date of purchase
COLOR	Black
PORTS	4x DB-9 male / 1 USB-B Upstream

1.1 About the Adapter

Protocol	Connector	Shell
Adds four serial port to your desktop or laptop computer. Uses RS-232 Protocol communication	Four male DB-9 pin connector with hex nut tightening for secure connection and one USB Type-B upstream port connector.	Rugged SECC metal shell with PWR, TxD and RxD LED indicators for each RS-232 connections.

1.2 Features

Feature List
<ul style="list-style-type: none"> • Installed as 4 standard Windows COM ports. • SECC metal chassis with DIN rail bracket. • Full RS-232 modem control signals and hardware/software flow control. • RS-232 data signals: TxD, RxD, RTS, CTS, DSR, DTR, DCD, RI, GND.

- High speed serial port with the baud rate up to 921.6K bps.
- 128 byte transmit FIFO & 384 byte receive FIFO.
- Non-standard baud rates supported
- LEDs of Power, TxD and RxD for easy port monitoring and diagnostics.

Power Requirement: The USB2-4COM-M is powered by host USB ports. It must work in USB self-power mode that supplies power of 5V / 500mA.

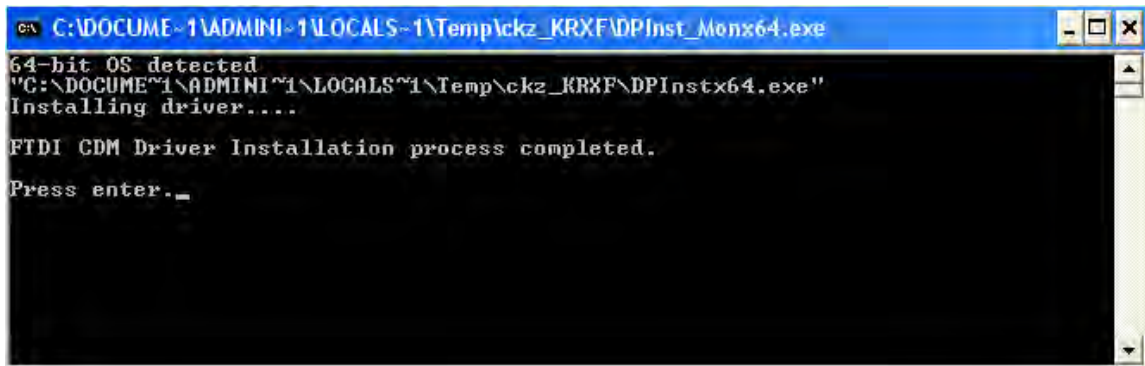
1.3 Windows 7/ Vista / 2003 / XP / 2000 Driver Installation

You need to have administrator privileges to install any new drivers under Windows 7/ Vista / 2003/ XP / 2000. To install the driver or update the configuration please log onto Windows as "Administrator" or ask your system administrator to install the USB-COM driver.

Note: You need to install driver first, prior to hardware installation. Do not connect the USB-to-Serial Adapter to the USB port of your computer, before you finish driver installation.

Please proceed with the following steps to install the driver:

1. Insert the "USB COM Series Driver and Utility" CD into your CD-ROM.
2. The "USB COM Series Driver and Utility CD" dialog box appears.
3. Under "Driver Installation", double click "Windows 7, Vista, 2003, XP, 2000 driver" to install the device driver.
4. The USB COM install program will auto-detect the OS type and install the driver automatically. (**Note:** in Windows 7 or Vista OS you will find another dialog box, please click on "OK" to confirm the drivers install program).



```
C:\DOCUME~1\ADMINI~1\LOCALS~1\Temp\ckz_KRXF\DPInst_Monx64.exe
64-bit OS detected
"C:\DOCUME~1\ADMINI~1\LOCALS~1\Temp\ckz_KRXF\DPInstx64.exe"
Installing driver....
FTDI CDM Driver Installation process completed.
Press enter._
```

Figure 1

5. After the message “FTDI CDM Driver installation process completed” appears, press “Enter” to complete the driver installation.
6. Plug in the USB to Serial Adapter to the USB port of your computer. Windows will finish installing the driver files.

1.4 Check Installation

You can now verify the installation has been completed successfully by looking under Device Manager of the System Properties screen. (Go there by Start-Setting- Control Panel-System Properties-Hardware-Device Manager.

The device should have installed as a "USB Serial Port (COMx)" attached to "USB Serial Converter (A/B or A/B/C/D)".

Change COM Port Properties & COM Port Number

This feature is particularly useful for programs, such as HyperTerminal, which only work with COM1 through COM4. Please ensure that you do not change the COM Port Number already in use.

To change the virtual COM port properties:

1. Insert the “USB COM Series Driver and Utility” CD into your CD-ROM.
2. The “USB COM Series Driver and Utility CD” dialog box appears.
3. Under “Driver uninstalling”, double click “Windows 2003, XP, 2000 driver uninstall” to uninstall the device driver.
4. When following dialog box appears, double click “Clean System” to uninstall the 2003/XP/2000 drivers.



Figure 2

5. You need to disconnect all USB to serial Adapters from your PC, when the message below appears. Double click “OK” to start uninstalling Windows 2003/XP/2000 USB to Serial drivers.



Figure 3

6. Double click “Yes” to confirm it.

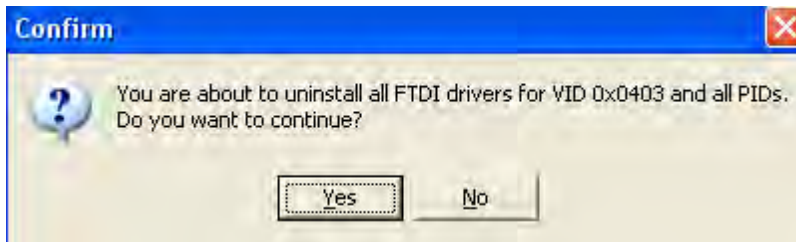


Figure 4

7. Click “No” to proceed.



Figure 5

8. When the message “Status: System clean completed” appears, double click “Exit” to complete the USB to serial drivers uninstall.



Figure 6

9. Press **“Start”** button and select **“Control Panel”**.
10. Open the Add or Remove program.

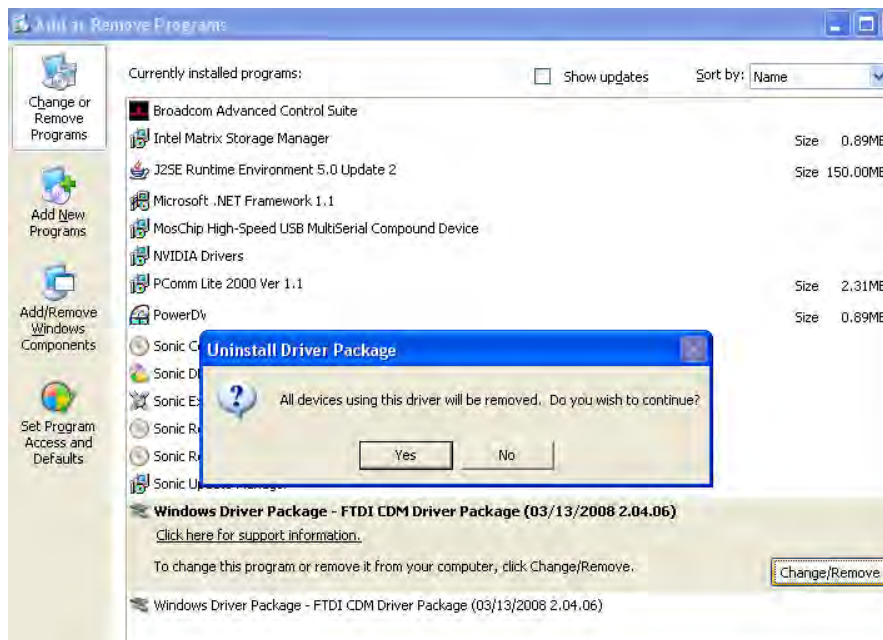


Figure 7

11. Remove the first **“Windows Driver Package – FTDI CDM Driver Package (...)”**.
12. Click **“Change/Remove”** and **“Yes”** to remove the first Windows Driver Package.
13. Remove the second **“Windows Driver Package – FTDI CDM Driver Package (...)”**.
14. Click **“Change/Remove”** and **“Yes”** to remove the second Windows Driver Package.
15. Reboot the computer to complete the driver uninstall.

2. Uninstalling Windows 7 or Vista Drivers

Windows 7 and Vista have many new security features. You need to proceed with the following steps to uninstall the Vista driver:

1. The USB to serial devices must connect to the PC.
2. Press “Start” button and select “Control Panel”.
3. Select “Classic View” from the top left hand corner and then “System” from the list.
4. Select “Device Manager” from the top left hand corner.

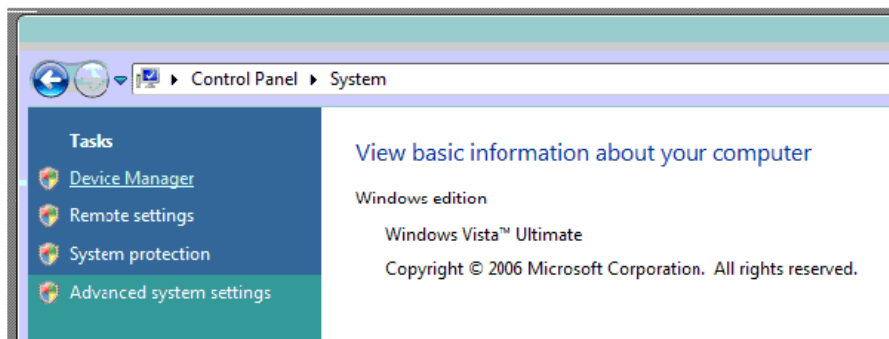


Figure 8

5. Locate your Device under the Ports (COM & LPT) section and right click on it to bring up the menu shown.

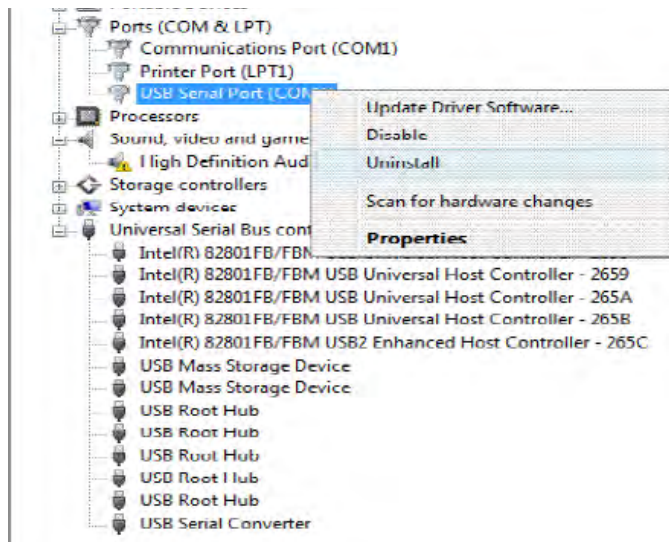


Figure 9

6. Select uninstall and be sure to click the box for “Delete the driver software for this device” in the next window and press “OK”.

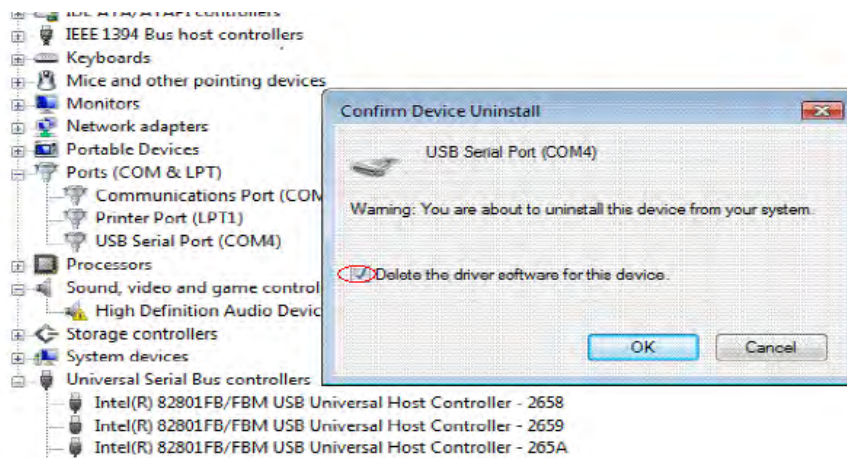


Figure 10

7. Locate your Device under the Universal Serial Bus Controllers section, and right click on it to bring up the menu shown.

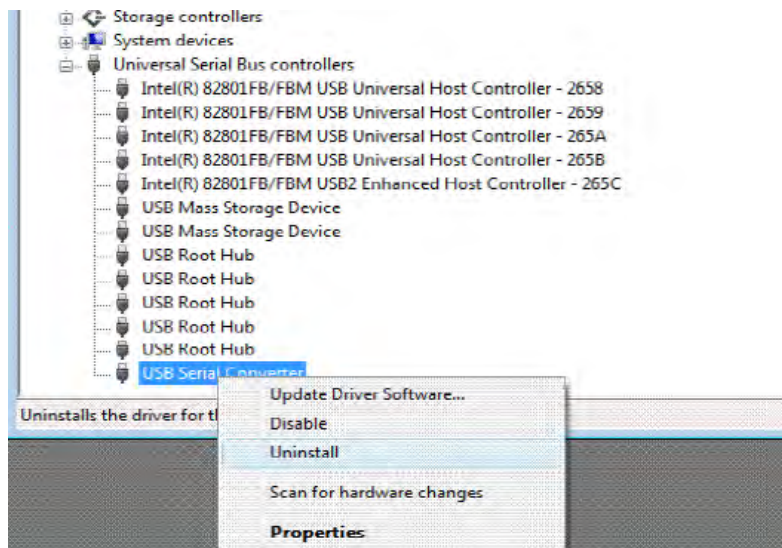


Figure 11

8. Select uninstall and be sure to click the box for “Delete the driver software for this device” in the next window and press “OK”.

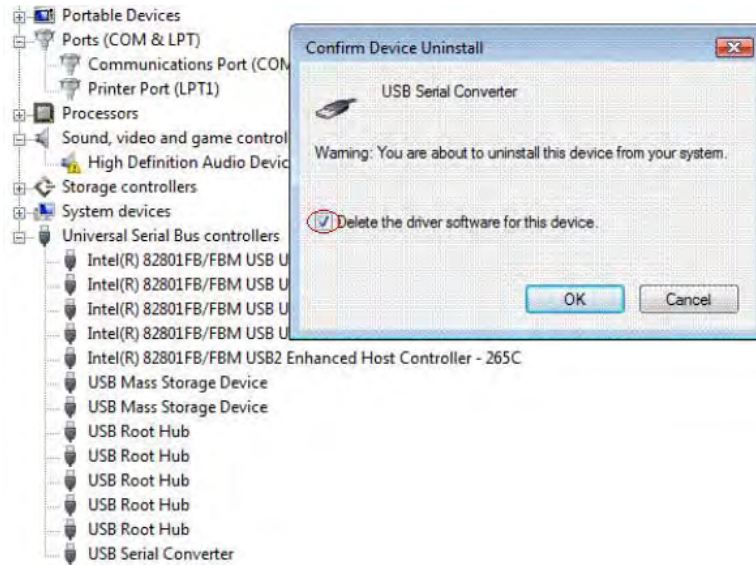


Figure 12

Note: if you have more than one USB Serial Converter installed in your PC, you need to repeat step 7 and step 8 to delete the driver software for all devices.

3. RS-232 Signal Pin-outs of DB-9 Male

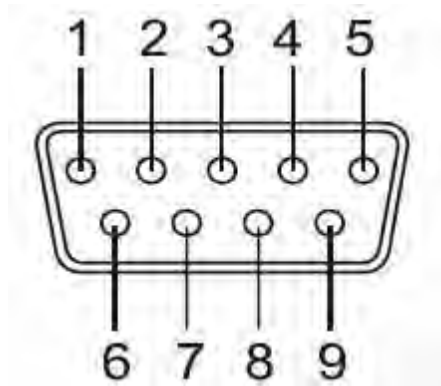


Figure 13

Pin 1	DCD
Pin 2	RxD
Pin 3	TxD
Pin 4	DTR
Pin 5	GND
Pin 6	DSR
Pin 7	RTS
Pin 8	CTS
Pin 9	RI

4. Notes, Tips, Warnings, and Safety

Note

You need to install driver first, prior to hardware installation. Do not connect the USB-to-Serial Adapter to the USB port of your computer, before you finish driver installation. [Reference section 1.3](#)

If you have more than one USB Serial Converter installed in your PC, you need to repeat step 7 and step 8 to delete the driver software for all devices. [Reference section 2.](#)

Tip

N/A

Warning

N/A

Safety

N/A

5. Product URL

<https://www.coolgear.com/product/usb2-0-4-port-usb-serial-db-9-rs-232-adapter-ftdi-chipset>