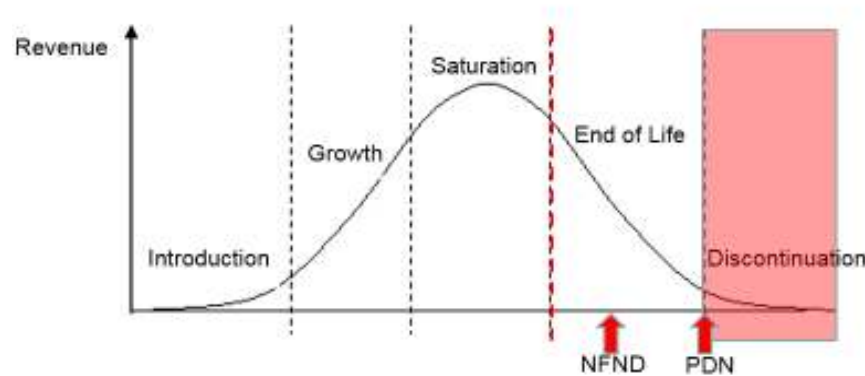


Light is OSRAM

Product Discontinuation (acc. JEDEC J-STD-048) OS-PD-2017-027

6/15/2017

Last order:	9/15/2017
Last delivery:	12/15/2017
Reason:	Replaced by 10K reel as per market request



Please direct your feedback to your local Sales office.

DISCONTINUED				NEW (REPLACEMENT)			
Device	Ordering Code	Function	Brand	Device	Datasheet Ordering Code	Function	Brand
GW JCLPS2.EM-HPHR-A131-1-65-R18	Q65112A0415	LED	DURIS E 3	GW JCLPS2.EM-HPHR-A131-1-65-R33	Q65112A3766	LED	DURIS E 3
GW JCLPS2.EM-HPHR-XX51-1-65-R18	Q65112A0411	LED	DURIS E 3	GW JCLPS2.EM-HPHR-XX51-1-65-R33	Q65112A3754	LED	DURIS E 3
GW JCLPS2.EM-HPHR-A333-1-65-R18	Q65112A0413	LED	DURIS E 3	GW JCLPS2.EM-HPHR-A333-1-65-R33	Q65112A3755	LED	DURIS E 3
GW JCLPS2.EM-HPHR-XX53-1-65-R18	Q65112A0409	LED	DURIS E 3	GW JCLPS2.EM-HPHR-XX53-1-65-R33	Q65112A3732	LED	DURIS E 3
GW JCLPS2.EM-HPHR-A535-1-65-R18	Q65112A0412	LED	DURIS E 3	GW JCLPS2.EM-HPHR-A535-1-65-R33	Q65112A3748	LED	DURIS E 3
GW JCLPS2.EM-HPHR-XX55-1-65-R18	Q65112A0408	LED	DURIS E 3	GW JCLPS2.EM-HPHR-XX55-1-65-R33	Q65112A3749	LED	DURIS E 3
GW JCLPS2.EM-GUHQ-A737-1-65-R18	Q65112A0418	LED	DURIS E 3	GW JCLPS2.EM-GUHQ-A737-1-65-R33	Q65112A3733	LED	DURIS E 3
GW JCLPS2.EM-GUHQ-XX57-1-65-R18	Q65112A0416	LED	DURIS E 3	GW JCLPS2.EM-GUHQ-XX57-1-65-R33	Q65112A3750	LED	DURIS E 3

DISC QNO	QNbrDesc_Discont	Products.QNbrDesc_Z1	REPL QNO	QNbrDesc_Replace
Q65112A0415	GW JCLPS2.EM-HPHR-A131-1-65-R18	GW JCLPS2.EM-HPHR-A131-1	Q65112A3766	GW JCLPS2.EM-HPHR-A131-1-65-R33
Q65112A0411	GW JCLPS2.EM-HPHR-XX51-1-65-R18	GW JCLPS2.EM-HPHR-XX51-1	Q65112A3754	GW JCLPS2.EM-HPHR-XX51-1-65-R33
Q65112A0413	GW JCLPS2.EM-HPHR-A333-1-65-R18	GW JCLPS2.EM-HPHR-A333-1	Q65112A3755	GW JCLPS2.EM-HPHR-A333-1-65-R33
Q65112A0409	GW JCLPS2.EM-HPHR-XX53-1-65-R18	GW JCLPS2.EM-HPHR-XX53-1	Q65112A3732	GW JCLPS2.EM-HPHR-XX53-1-65-R33
Q65112A0412	GW JCLPS2.EM-HPHR-A535-1-65-R18	GW JCLPS2.EM-HPHR-A535-1	Q65112A3748	GW JCLPS2.EM-HPHR-A535-1-65-R33
Q65112A0408	GW JCLPS2.EM-HPHR-XX55-1-65-R18	GW JCLPS2.EM-HPHR-XX55-1	Q65112A3749	GW JCLPS2.EM-HPHR-XX55-1-65-R33
Q65112A0418	GW JCLPS2.EM-GUHQ-A737-1-65-R18	GW JCLPS2.EM-GUHQ-A737-1	Q65112A3733	GW JCLPS2.EM-GUHQ-A737-1-65-R33
Q65112A0416	GW JCLPS2.EM-GUHQ-XX57-1-65-R18	GW JCLPS2.EM-GUHQ-XX57-1	Q65112A3750	GW JCLPS2.EM-GUHQ-XX57-1-65-R33