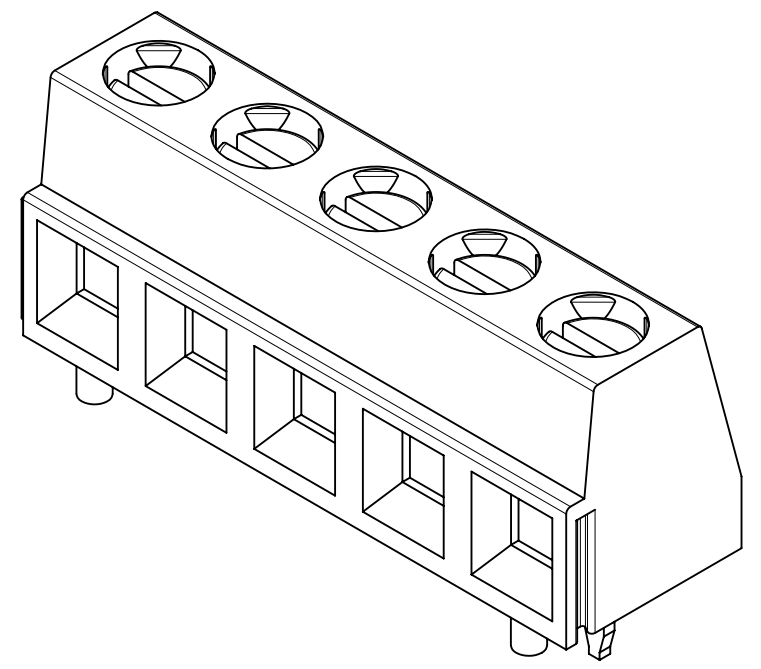
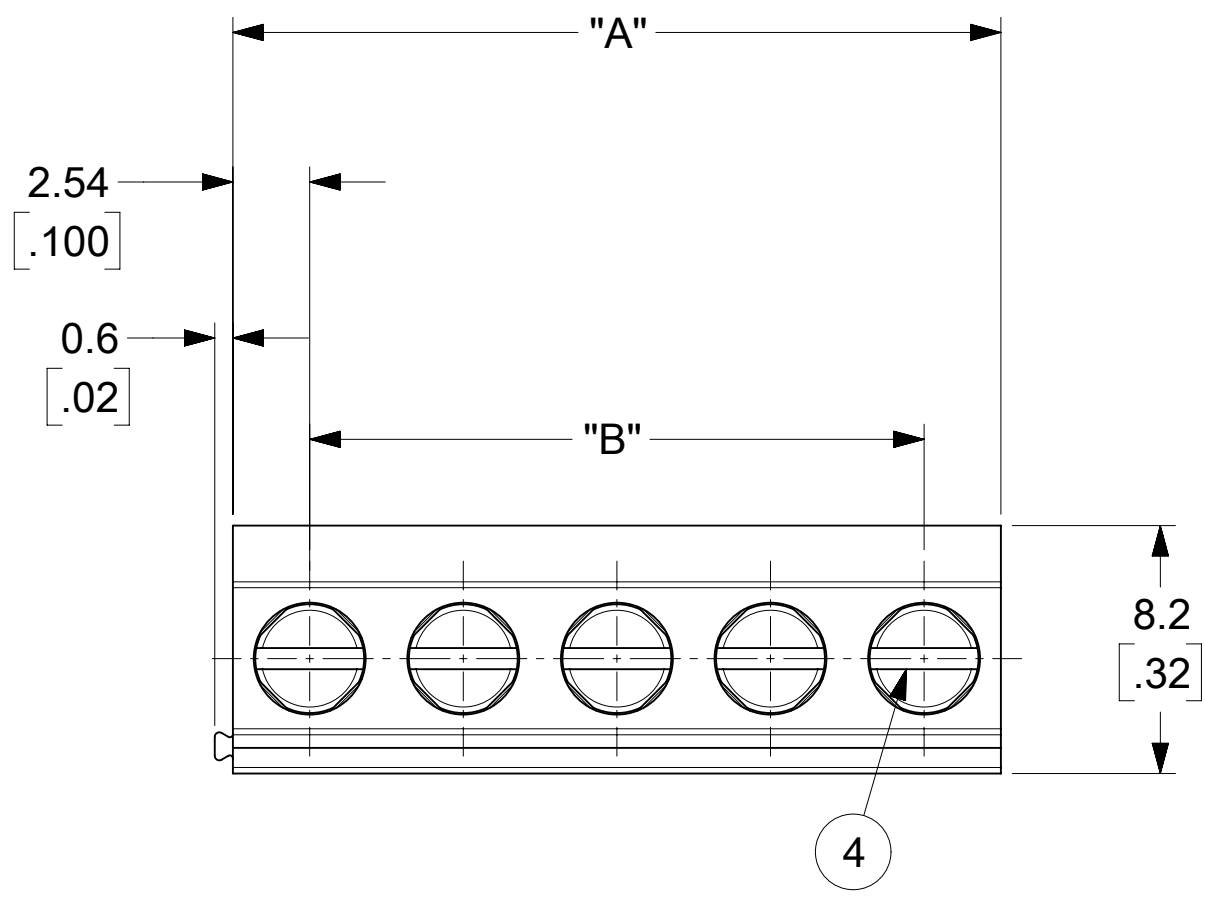
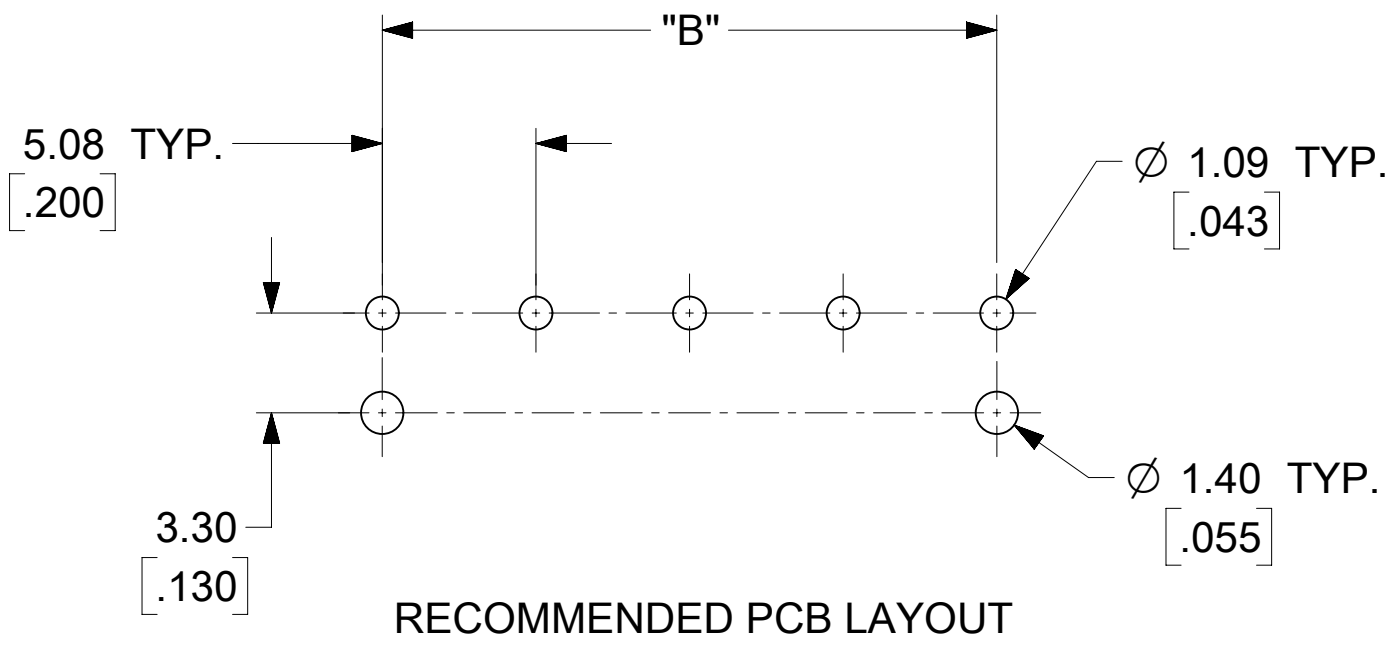
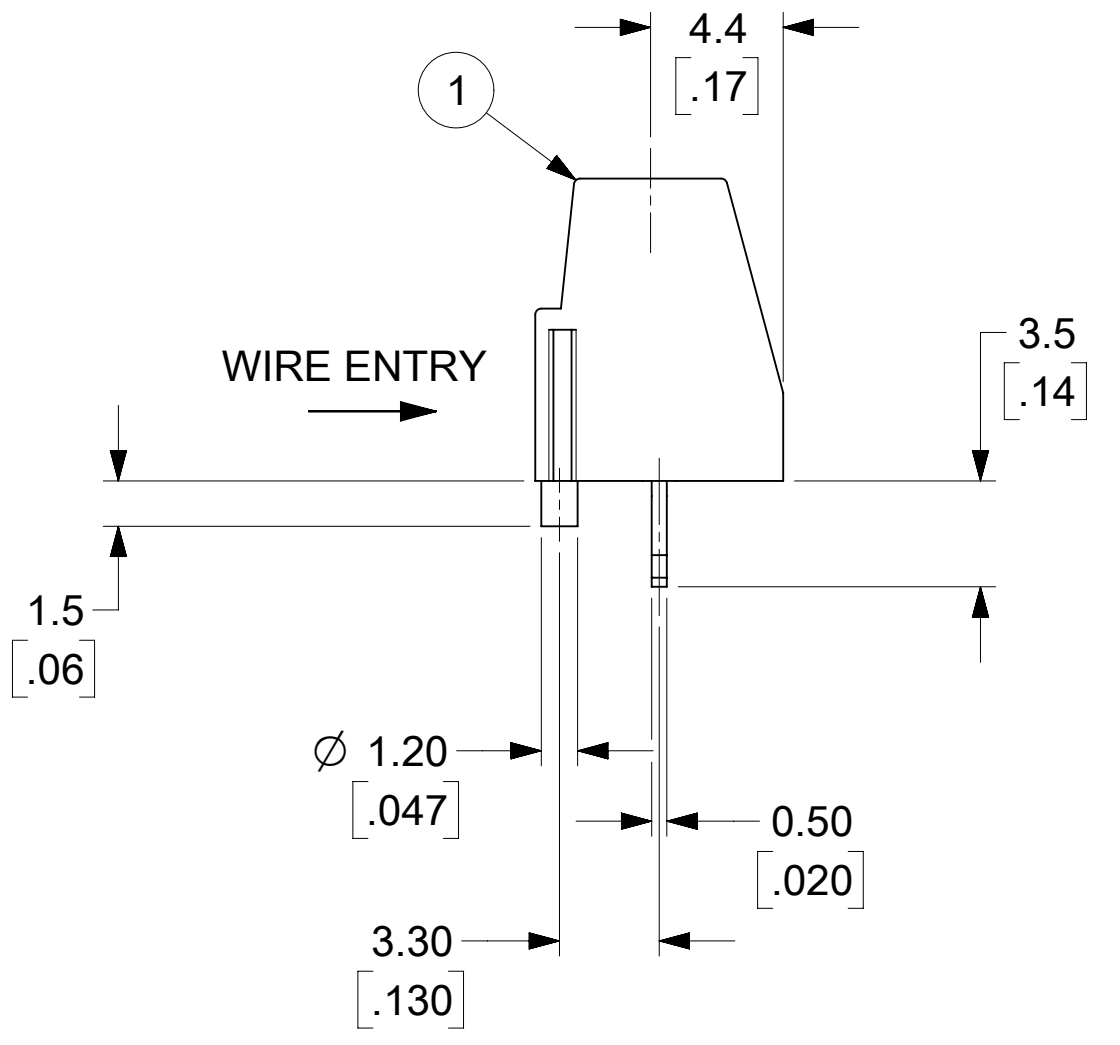
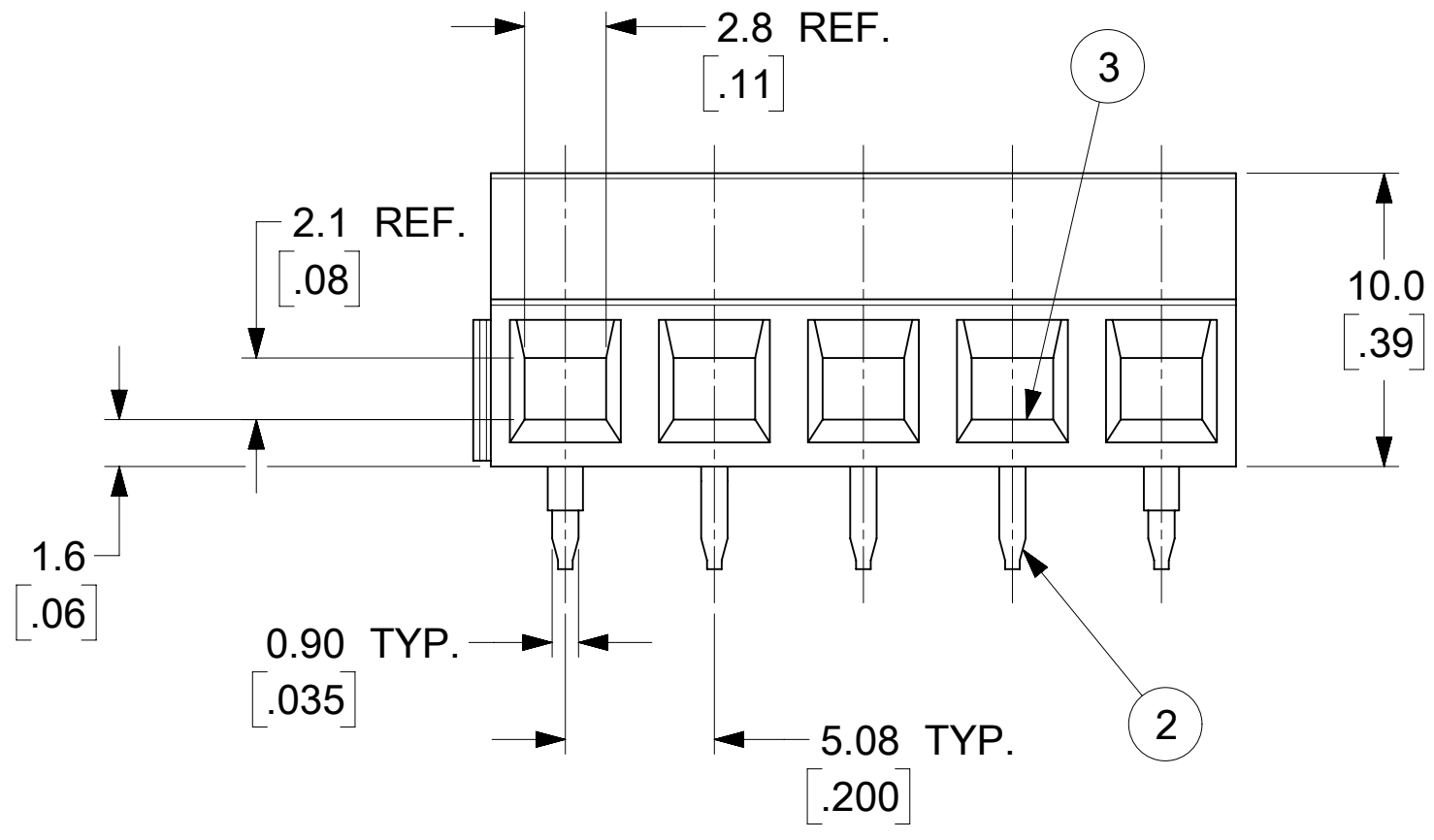


NO. OF CIRC. "XX"	DIM. "A"		DIM. "B"		MATERIAL NUMBER
	mm	IN	mm	IN	
02	10.2	.40	5.08	.200	398890042
03	15.2	.60	10.16	.400	
04	20.3	.80	15.24	.600	
05	25.4	1.00	20.32	.800	398890043
06	30.5	1.20	25.40	1.000	398890044



AUX. VIEWS  
(5 CIRCUIT SHOWN)

- NOTES:
1. MATERIAL: SEE TABLE
  2. FINISHES: SEE TABLE
  3. "XX" REFERS TO QUANTITY OF CIRCUITS.
  4. WIRE RANGE: 16-30 AWG (A1)
  5. RATED VOLTAGE: 300V PER UL (A1)
  6. RATED CURRENT: 13.5A PER UL (A1)
  7. RECOMMENDED TIGHTENING TORQUE: 6.0 LB. IN. (A1)
  8. WIRE STRIP LENGTH: 6mm(.24in)
  9. OPERATING TEMPERATURE: -40°C TO +105°C
  10. POLARIZING PEGS ARE ONLY ON END CIRCUITS.



ITEM	QTY.	DESCRIPTION	MATERIAL	FINISH
4	XX	SCREW, M3	COPPER ALLOY	NICKEL PLATED
3	XX	CLAMP, RISING	COPPER ALLOY	NICKEL PLATED
2	XX	TERMINAL	COPPER ALLOY	TIN PLATED
1	1	HOUSING, UL94 V-0	PA66	BLACK

FUNCTIONAL SYMBOLS FA = 0 FC = 0 FP = 0	THIS DRAWING CONTAINS INFORMATION THAT IS PROPRIETARY TO MOLEX ELECTRONIC TECHNOLOGIES, LLC AND SHOULD NOT BE USED WITHOUT WRITTEN PERMISSION		CURRENT REV DESC: MODIFIED NOTES #4 TO #7				
	DIMENSION UNITS	SCALE	EC NO: 706702				
	MM/INCH	4:1	DRWN: ABENJAMINLW	2022/04/27			
	GENERAL TOLERANCES (UNLESS SPECIFIED)		CHK'D: DACHAMMER	2022/05/12			
DIVISIONAL SYMBOLS	4 PLACES	± --- ± ---	APPR: JFMURPHY	2022/05/13			
	3 PLACES	± --- ± .005	INITIAL REVISION:				
	2 PLACES	± 0.13 ± .01	DRWN: CLYORK	2008/03/28			
	1 PLACE	± 0.25 ± ---	APPR: JMACNEIL	2008/04/18			
DRAFT WHERE APPLICABLE MUST REMAIN WITHIN DIMENSIONS		THIRD ANGLE PROJECTION	DRAWING	SERIES			
			C-SIZE	39889			
DOCUMENT STATUS	P1	RELEASE DATE	2022/05/13 15:39:58	DOCUMENT NUMBER	DOC TYPE	DOC PART	REVISION
SD-39889-003		PSD	001	A1	MATERIAL NUMBER		
SEE CHART		GENERAL MARKET		SHEET NUMBER			
1 OF 1							