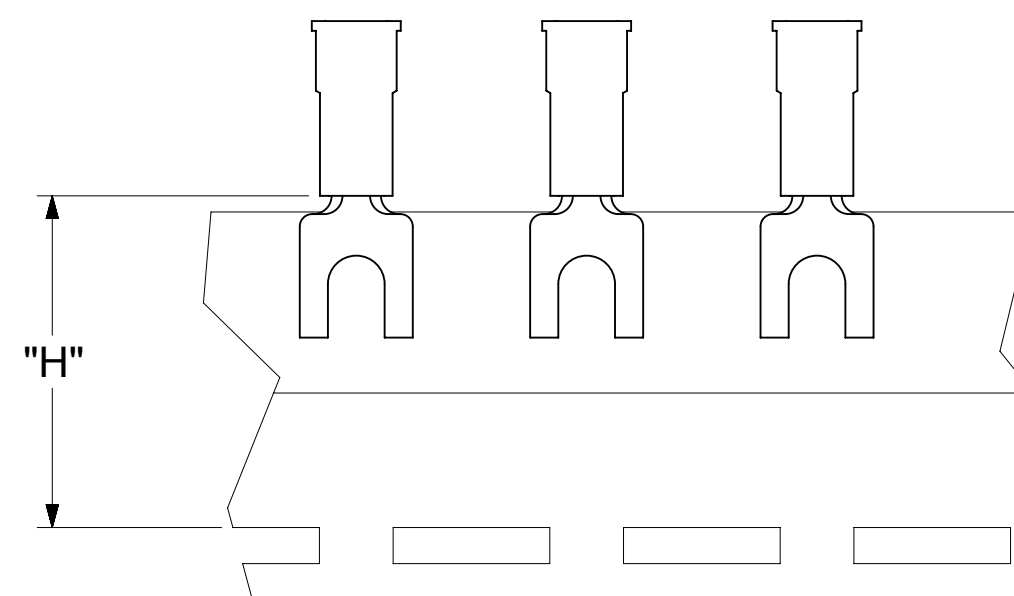
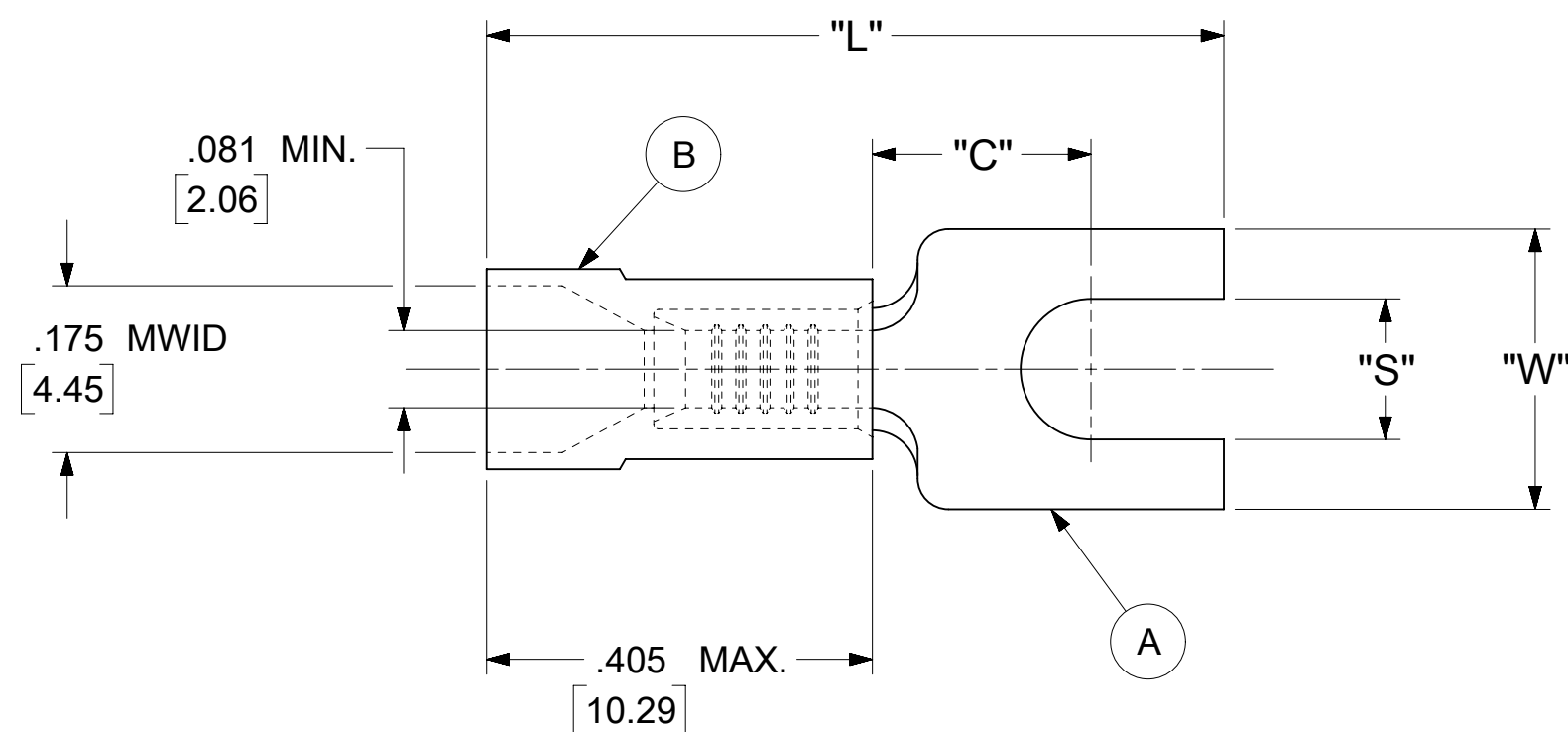


LOOSE PIECE		TAPE MOUNTED		SPECIFICATIONS						
MATERIAL NUMBER	ENGINEERING NUMBER	MATERIAL NUMBER	ENGINEERING NUMBER	STUD SIZE	"S" ±.005 [0.13]	"W" ±.010 [0.25]	"C" MIN.	"L" MAX.	"H"	STOCK ±.001[0.25] THICKNESS
191310025	BB-2471-04X	191310024	BB-2471-04XT	4	.119 [3.02]	.245 [6.22]	.224 [5.69]	.785 [19.94]	.980 [24.89]	.031 [0.79]
191310023	BB-2471-06X	191310022	BB-2471-06XT	6	.146 [3.71]					



PARTS ON TAPE

NOTES:

- MATERIAL:
 - (A). SPADE TONGUE TERMINAL: COPPER
PLATING: ELECTRO-TIN (.0003 MIN.)
 - (B). INSULATION: MOLDED PVC (BLUE)
- MWID: MAXIMUM WIRE INSULATION DIAMETER
- WIRE SIZE: 16 -14 AWG
1.0 -2.5 MM²
- "UL" LISTING #E32244
"CSA" LISTING #18689
- ALL DIMENSIONS IN INCHES/[MM].
- PARTS ARE ROHS COMPLIANT.
- DIMS. SHOWN ARE FOR REFERENCE ONLY.

SYMBOLS	THIS DRAWING CONTAINS INFORMATION THAT IS PROPRIETARY TO MOLEX ELECTRONIC TECHNOLOGIES, LLC AND SHOULD NOT BE USED WITHOUT WRITTEN PERMISSION										
	DIMENSION UNITS	SCALE		CURRENT REV DESC: MIGRATION TO ECTR/NX							
∇ = 0	INCH/MM	NTS		EC NO: 620815 DRWN: ABENJAMINLW 2019/07/01 CHK'D: GROJAS01 2019/07/18 APPR: JMACNEIL 2019/08/05							
∇ = 0	GENERAL TOLERANCES (UNLESS SPECIFIED)									INITIAL REVISION: DRWN: JJ 1984/11/06 APPR: JMACNEIL 2019/08/05	
∇ = 0		MM	INCH	DOCUMENT NUMBER: 191440028 DOC TYPE: PSD DOC PART: 000 REVISION: A							
∇ = 0	4 PLACES	±	---							±	---
∇ = 0	3 PLACES	±	---	±	.005	DRAFT WHERE APPLICABLE MUST REMAIN WITHIN DIMENSIONS					
∇ = 0	2 PLACES	±	0.13	±	.01						
∇ = 0	1 PLACE	±	0.25	±	---	ANGULAR TOL ± 0.5°					
∇ = 0	0 PLACES	±	---	±	---						
∇ = 0	∇ = 0	DRAFT WHERE APPLICABLE MUST REMAIN WITHIN DIMENSIONS			THIRD ANGLE PROJECTION DRAWING: C-SIZE SERIES: 19144						
∇ = 0	∇ = 0	DRAFT WHERE APPLICABLE MUST REMAIN WITHIN DIMENSIONS									THIRD ANGLE PROJECTION DRAWING: C-SIZE SERIES: 19144