

Product data sheet

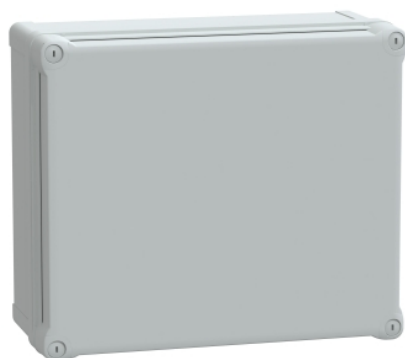
Characteristics

NSYTBS342916H

ABS box IP66 IK07 RAL7035

Int.H325W275D160 Ext.H341W291D168

Opaque cover H60



Main

| | |
|---------------------|--|
| Range | Thalassa |
| Product name | Thalassa TBS |
| Device Application | Multi-purpose |
| Category | Industrial box |
| Height | 13.43 in (341 mm) |
| Width | 11.46 in (291 mm) |
| Depth | 6.61 in (168 mm) |
| Internal height | 12.80 in (325 mm) |
| Internal width | 10.83 in (275 mm) |
| Internal depth | 6.30 in (160 mm) |
| Enclosure mounting | Wall mounted |
| Device composition | 1 body 1 cover 4 cover screw |
| Body type | One piece moulded |
| Type of front cover | High plain cover |
| Cover fixing | Plastic screws |
| Lock type | Captive screw flat outside sealed area |
| Removable parts | Cover by captive screws |

Complementary

| | |
|-------------------------------------|---------------------------------------|
| Material | ABS (acrylonitrile butadiene-styrene) |
| Color | Gray RAL 7035) |
| Standards | IEC 62208 |
| Product Certifications | TÜV |
| Electrical Insulation Class | Class II |
| IP degree of protection | IP66 conforming to NEMA 4.4X |
| IK degree of protection | IK07 IEC 62262 |
| Glow wire resistance | 1202 °F (650 °C) IEC 60695-2-11 |
| Ambient Air Temperature for Storage | 5...104 °F (-15...40 °C) |
| Operating temperature | -13...140 °F (-25...60 °C) |
| Net Weight | 3.66 lb(US) (1.66 kg) |

Ordering and shipping details

| | |
|-----------------------|-----------------------------------|
| Category | 80033-ENCLOSURE SYSTEMS POLYESTER |
| Discount Schedule | ES1 |
| GTIN | 3606480165412 |
| Nbr. of units in pkg. | 1 |
| Package weight(Lbs) | 3.59 lb(US) (1.63 kg) |
| Returnability | No |
| Country of origin | HU |

The information provided in this documentation contains general descriptions and/or technical characteristics of the performance of the products contained herein. This documentation is not intended as a substitute for and is not to be used for determining suitability or reliability of these products for specific user applications. It is the duty of any such user or integrator to perform the appropriate and complete risk analysis, evaluation and testing of the products with respect to the relevant specific application or use thereof. Neither Schneider Electric Industries SAS nor any of its affiliates or subsidiaries shall be responsible or liable for misuse of the information contained herein.

Packing Units

| | |
|------------------------------|-------------------------|
| Unit Type of Package 1 | PCE |
| Package 1 Height | 7.28 in (18.5 cm) |
| Package 1 width | 11.81 in (30.0 cm) |
| Package 1 Length | 14.17 in (36.0 cm) |
| Unit Type of Package 2 | CAR |
| Number of Units in Package 2 | 3 |
| Package 2 Weight | 12.96 lb(US) (5.88 kg) |
| Package 2 Height | 15.75 in (40.0 cm) |
| Package 2 width | 15.75 in (40.0 cm) |
| Package 2 Length | 23.62 in (60.0 cm) |
| Unit Type of Package 3 | P12 |
| Number of Units in Package 3 | 36 |
| Package 3 Weight | 174.17 lb(US) (79.0 kg) |
| Package 3 Height | 53.54 in (136.0 cm) |
| Package 3 width | 31.50 in (80.0 cm) |
| Package 3 Length | 47.24 in (120.0 cm) |

Offer Sustainability

| | |
|----------------------------|--|
| Sustainable offer status | Green Premium product |
| REACH Regulation | REACH Declaration |
| REACH free of SVHC | Yes |
| EU RoHS Directive | Pro-active compliance (Product out of EU RoHS legal scope) EU RoHS Declaration |
| Toxic heavy metal free | Yes |
| Mercury free | Yes |
| RoHS exemption information | Yes |
| China RoHS Regulation | China RoHS Declaration |
| Environmental Disclosure | Product Environmental Profile |

Contractual warranty

| | |
|----------|-----------|
| Warranty | 18 months |
|----------|-----------|