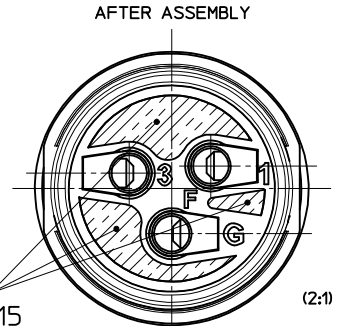
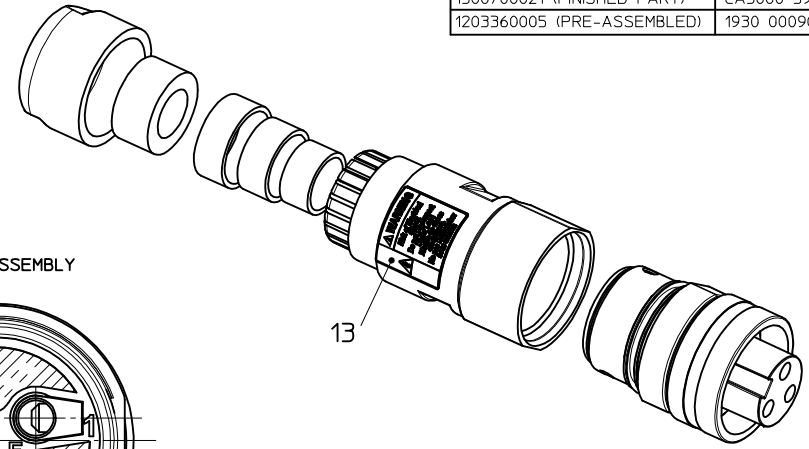


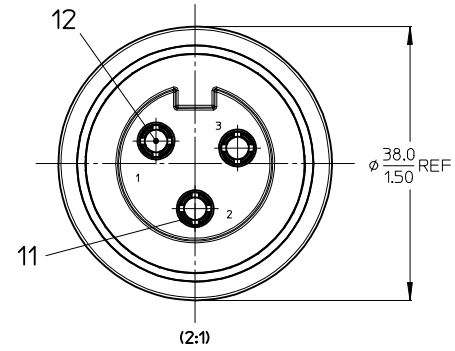
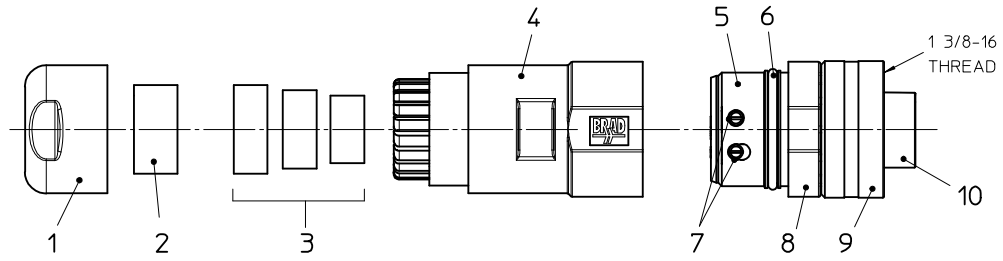
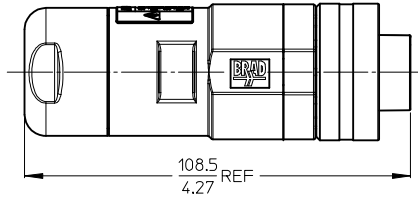
NOTES:

1. MATERIAL: SEE TABLE
2. FINISHES: SEE TABLE
3. PACKAGING: PART IS PACKED IN CLEAR POLY BAG WITH BARCODE LABEL ATTACHED
4. MATES WITH: BRAD MALE RECEPTACLE
5. WIRE RANGE: 8 AWG - 14 AWG (10mm² - 2,5mm²)
6. CABLE OD RANGE: .48 - .81 (12.2mm - 20,6mm)
7. ELECTRICAL SPECIFICATIONS:
 - VOLTAGE RATING: 600V AC
 - CURRENT RATING:
 - 8 AWG - 32 AMPS
 - 10 AWG - 32 AMPS **(B)**
 - 12 AWG - 20 AMPS
 - 14 AWG - 15 AMPS
8. ENVIRONMENTAL PROTECTION: IP67, IP69K

MATERIAL NO.	ENGINEERING NO.
1300700021 (FINISHED PART)	CA3000-39
1203360005 (PRE-ASSEMBLED)	1930 00090 08004



ULTIMATE HEIGH POTTING MATERIAL
ABOUT 2mm UNTIL UNDER THE EDGE



ITEM	COMPONENT	MATERIAL	FINISH
1	NUT M32	PA66	BK
2	GASKET MO 14,8x12,25	CR	GY
3	GASKETS MO (SMALL,MEDIUM,LARGE)	CR	BK
4	HOUSING FA M32	PA66	BK
5	INSERT FE OC ADAPTER	PA66	BK
6	GASKET OR 29x2,5	NBR	BK
7	SCREW M4x10	V2A	-
8	COUPLING RING	PA66	BK
9	NUT, INTERNAL THREAD	AL	AN (NATUR)
10	INSERT FE AC	PVC	-
11	SLEEVE	BRASS ALLOY	ZN
12	CONTACT 31,2MM FE	CU ALLOY	AU PLATED
13	WARNING LABEL	PLASTIC FILM	-
14	POTTING MATERIAL	WEVO RESIN PU 552 FL NATUR 50	-
15	MPIS RESIN HARDNER	-	-

WAS 30 AMPS IEC NO: IPG2017-0717 DRAWN: STONE 2017/01/26 CHKDK COX 2017/04/30 APPR: BWOODMAN 2017/07/04 REV B	QUALITY SYMBOLS ▽=0 ▽=0	GENERAL TOLERANCES (UNLESS SPECIFIED) <table border="1"> <tr> <th></th> <th>mm</th> <th>INCH</th> </tr> <tr> <td>4 PLACES</td> <td>+ .005</td> <td>+ .0005</td> </tr> <tr> <td>3 PLACES</td> <td>+ .003</td> <td>+ .0003</td> </tr> <tr> <td>2 PLACES</td> <td>+ .002</td> <td>+ .0002</td> </tr> <tr> <td>1 PLACE</td> <td>+ .001</td> <td>+ .0001</td> </tr> <tr> <td>0 PLACE</td> <td>+ .000</td> <td>+ .0000</td> </tr> </table>		mm	INCH	4 PLACES	+ .005	+ .0005	3 PLACES	+ .003	+ .0003	2 PLACES	+ .002	+ .0002	1 PLACE	+ .001	+ .0001	0 PLACE	+ .000	+ .0000	DIMENSION STYLE MM/IN	SCALE 1:1	DESIGN UNITS METRIC	THIRD ANGLE PROJECTION
		mm	INCH																					
	4 PLACES	+ .005	+ .0005																					
	3 PLACES	+ .003	+ .0003																					
2 PLACES	+ .002	+ .0002																						
1 PLACE	+ .001	+ .0001																						
0 PLACE	+ .000	+ .0000																						
DRAFT WHERE APPLICABLE MUST REMAIN WITHIN DIMENSIONS		DRAWN BY RSCHIEBER	DATE 2012/10/02	TITLE FA 3P AC FE STR UNSH																				
ANGULAR ±1/2°		CHECKED BY APOHL	DATE 2012/10/24	APPROVED BY CBURGER																				
SIZE A2		MATERIAL NO. SEE CHART	DATE 2013/06/03	DOCUMENT NO. SD-120336-004	SHEET NO. 1 OF 1																			