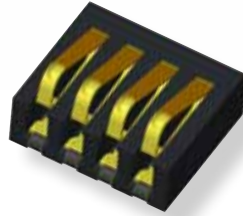


## Product Change Notification

### MODULAR CONTACTS

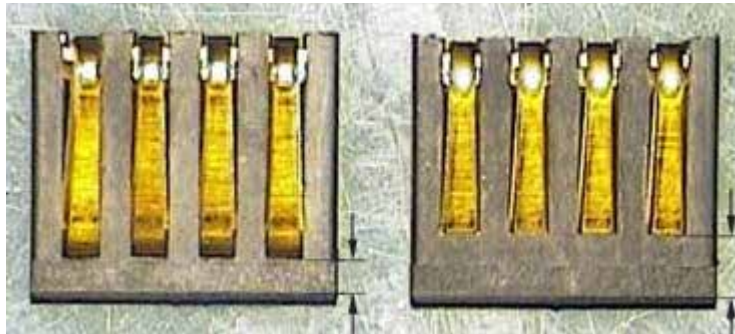


May, 2016

## Bourns® Model 70ABJ/Male Modular Contact *Change to Plastic Housing Design*

Bourns is pleased to announce that the [Model 70ABJ/Male Modular Contact](#) now features pick and place automatic capability. We have updated the plastic housing design of the Bourns® Model 70ABJ/Male Modular Contact to provide extra space for pick and place equipment. The current design has limited space and our customers cannot use automatic pick and place machines for manufacturing. The new design will improve production cycle in manufacturing.

Below is the change in the plastic housing design. While the form has changed, the fit and function are completely the same and all of the overall dimensions are the same. Now, more plastic housing space will be available for automatic pick and placement on the board.



*Current Housing  
(with Limited Space)*

*New Housing  
(with Increased Space)*

#### **Affected Part Numbers:**

70ABJ-2-M0E

70ABJ-3-M0E

70ABJ-4-M0E

*Bourns will begin shipping this product week 26; June 20, 2016*

If you have any questions or need additional information, please contact [Customer Service](#) in your region.