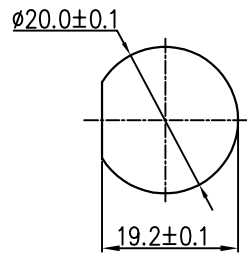
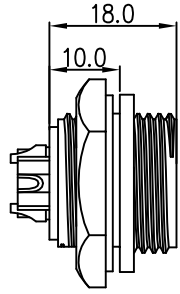


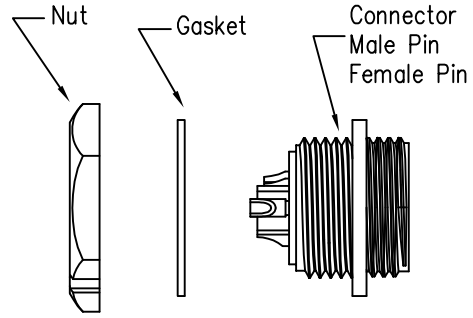
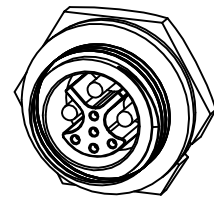
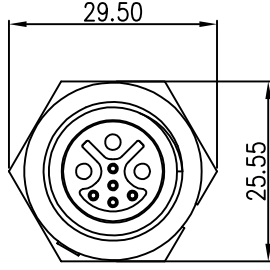
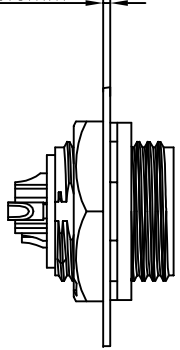
REV.	ECN NO.	DESCRIPTION	SIGN	DATE
C1	N/A	INITIAL DRAWING	Liu	2020/05/16



Recommended Panel Cut-Out



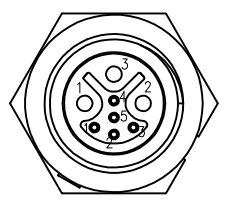
Panel T: Max 3.5mm



Specification:

1. Operation Temperature:  $-45^{\circ}\text{C} \sim 105^{\circ}\text{C}$ .
2. Insulation Resistance:  $100\text{M}\Omega$  at DC500V.
3. Contact Resistance:  $<10\text{m}\Omega$ .
4. Withstand Voltage: 1000V AC
5. Operating Current: 15A+2A
6. Operating Voltage: DC 125V+30V
7. Waterproof Rate: IP67 (Mated)
8. Housing: Nylon, Black
9. Female Pin: Copper Alloy, Gold Plated
10. Male Pin: Copper Alloy, Gold Plated
11. Gasket: Silicon Gray
12. Panel Nut: Nylon, Black
13. Torque Rate:  $0.8 \sim 1.0\text{N} \cdot \text{m}$
14. RoHS Compliant.
15. Mating Cap P/N: 806-00021-00

23XXX515-03  
Pin Number



3M+5F

P/N: 23305515-03

Pin Assignments  
Front View

UNIT: mm	
TOLERANCE	
.X	$\pm 0.25$
.XX	$\pm 0.15$
.XXX	$\pm 0.05$
ANGLES	$\pm 1^{\circ}$

DESCRIPTION	Middle Series 3M+5F Screw Type Rear Mount		
SCALE:	1:1	SHEET	1 OF 1
REV.	C1	SIZE	A4
			* : Inspection Item

**CHOGORI**

PART NO	23305515-03	DRAWN BY	Liu	DATE	2020/05/16
DWG NO		CHECKED BY	Mo	DATE	2020/05/16
CUSTOMER		APPROVED BY	Adley	DATE	2020/05/16

THIS INFORMATION IS CONFIDENTIAL AND IS DISCLOSED TO YOU ON CONDITION THAT NO FURTHER DISCLOSURE IS MADE BY YOU TO OTHER THAN CHOGORI PERSONNEL WITHOUT AUTHORIZATION FROM CHOGORI CORP.