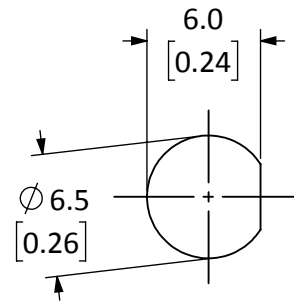
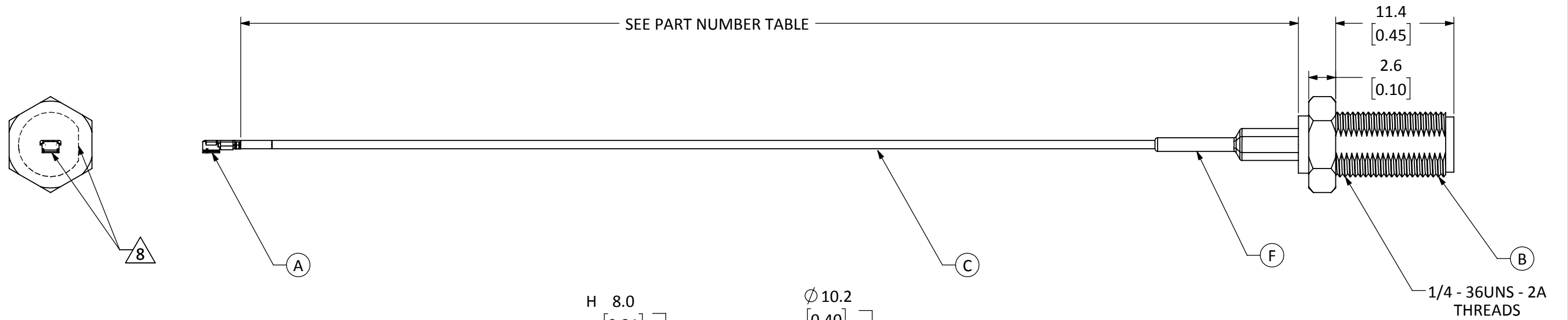


| ITEM | DESCRIPTION | MATERIAL | FINISH |
|------|-----------------------------------|----------------|--------|
| A | MHF PLUG TYPE III | BRASS | GOLD |
| B | SMA FEM. BULKHEAD MOUNT CONNECTOR | BRASS | GOLD |
| C | CABLE | 0.81mm COAXIAL | BLACK |
| D | NUT | BRASS | GOLD |
| E | WASHER | BRASS | GOLD |
| F | HEAT SHRINK TUBING | POLYOLEFIN | BLACK |

| REVISIONS | | | |
|-----------|--|-----------|------|
| REV | DESCRIPTION | DATE | APPV |
| A | INITIAL RELEASE OF LINX INTERNAL DRAWING | 13-NOV-19 | CLL |



RECOMMENDED MOUNTING HOLE



NOTES: (UNLESS OTHERWISE SPECIFIED)

- ALL DIMENSIONS ARE IN MILLIMETERS [INCHES].
- DIMENSIONS APPLY AFTER FINISHING.
- MANUFACTURE TO BE COMPLIANT WITH EU RoHS DIRECTIVE, USE MATERIALS THAT DO NOT CONTAIN REACH SUBSTANCES OF VERY HIGH CONCERN >1000ppm, AND USE DRC CONFLICT-FREE SOURCED MATERIALS.
- MINIMUM FREQUENCY RANGE: DC TO 6GHz.
- CABLE ASSEMBLY SPECIFICATIONS;
 - CHARACTERISTIC IMPEDANCE: $50\Omega \pm 3\Omega$
 - INSERTION LOSS: 100mm - 0.37vf IN GHz TYP.
 - 200mm - 0.68vf IN GHz TYP.
- CONNECTOR TO BE APPLIED IN ACCORDANCE WITH CONNECTOR SUPPLIER RECOMMENDED PROCEDURE.
- TORQUE SPECIFICATIONS;
 - BULKHEAD MOUNTING NUT TORQUE: 7 TO 10 in-lbs.
 - RECOMMENDED MATING TORQUE: 7 TO 10 in-lbs.

8 CONNECTORS TO BE ORIENTED WITH MHF3 CONNECTOR MATING FACE 90° CLOCKWISE FROM BULKHEAD CONNECTOR THREAD FLAT FACE, AS SHOWN.

9 INSTALL WASHER (ITEM E) AND NUT (ITEM D) ONTO CONNECTOR BODY (ITEM B).

| PART NUMBER | CABLE LENGTH |
|-------------------|---------------|
| CSJ-SGFB-100-MHF3 | 100mm ± 1.5mm |
| CSJ-SGFB-200-MHF3 | 200mm ± 3.0mm |

WARNING: THIS DRAWING CONTAINS PROPRIETARY INFORMATION THAT IS THE SOLE PROPERTY OF LINX TECHNOLOGIES, AND SHALL BE TREATED AS SUCH. NO DISCLOSURE OR REPRODUCTION OF THIS DOCUMENT IS PERMITTED, IN WHOLE OR IN PART, WITHOUT THE EXPRESS WRITTEN PERMISSION OF LINX TECHNOLOGIES OR ITS DESIGNATED AGENTS.

| | | |
|-----------|--|-----------------|
| MATERIAL: | TOLERANCES: 0.50 [0.020]-5.00 [0.200]=+0.20 [0.008] 5.00 [0.200]-30.00 [1.200]=+0.40 [0.016] 30.0 [1.20]-120.0 [4.75]=+0.60 [0.24] 120.0 [4.75]-315.0 [12.40]=+1.0 [0.040] | PROJECTION: |
| FINISH: | DRAWN: B.MURPHY DT: 5-NOV-19 ENGR: D.VARATHARAJAN DT: 13-NOV-19 | ANGLES: ±1° |

Linx 159 ORT LANE
MERLIN, OR 97532

TITLE: **CBL ASSEMBLY, MHF3 TO FEM. BLKHD SMA, 0.81mm CBL**

| | | |
|----------|-------------------|----------|
| SIZE | DWG. NO. | REV |
| B | CSJ-SGFB-***-MHF3 | A |

SCALE: 2.5:1 DO NOT SCALE DRAWING SHEET 1 OF 1