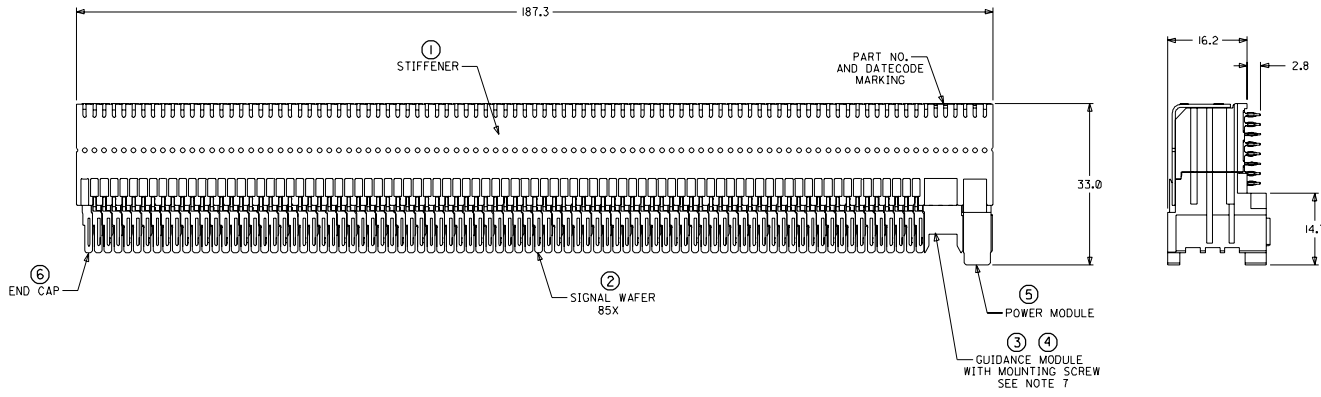
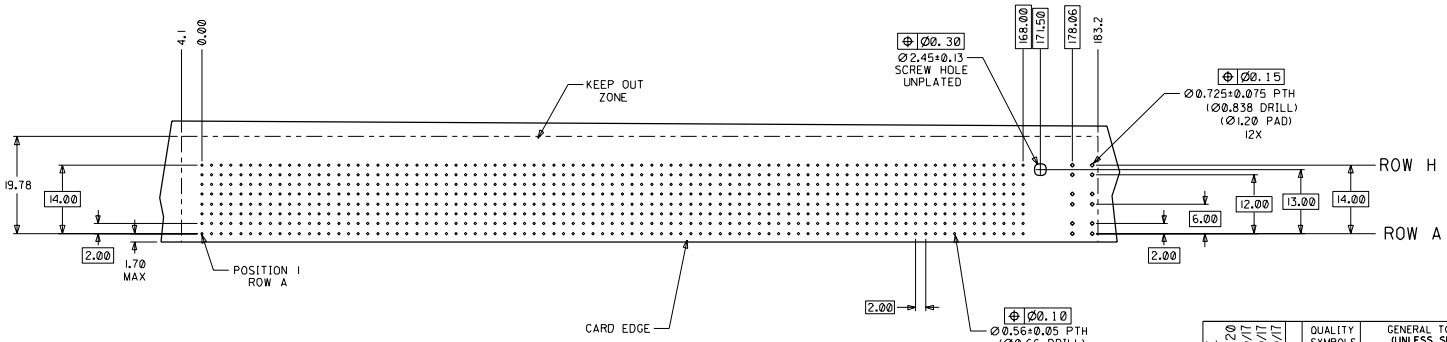
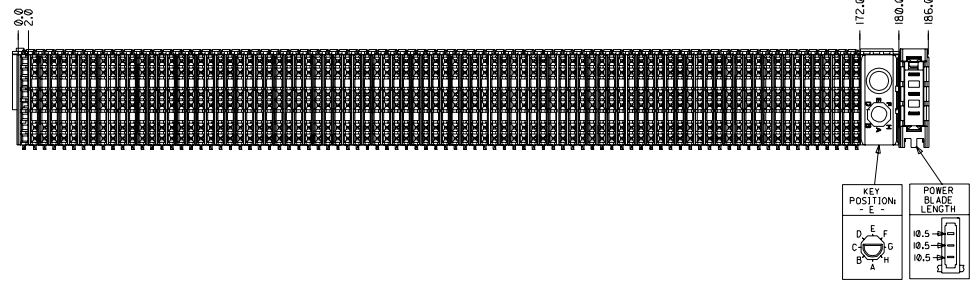


CUSTOMER: PROCKET NETWORKS



- NOTES: (UNLESS OTHERWISE SPECIFIED)
1. MATERIALS: HOUSING - LIQUID CRYSTAL POLYMER (LCP), GLASS-FILLED, UL94V-0, BLACK.
TERMINALS - HIGH PERFORMANCE COPPER ALLOY.
STIFFENER - STAINLESS STEEL.
 2. FINISH: SELECTIVE GOLD (Au) IN CONTACT AREA, 0.00076mm MINIMUM THICKNESS; SELECTIVE TIN/LEAD (Sn/Pb) ON PCB TAILS, NICKEL (Ni) OVERALL.
 3. REFER TO MOLEX PRODUCT SPECIFICATION PS-74031-999 FOR PERFORMANCE SPECIFICATIONS.
 4. REFER TO MOLEX DOCUMENT SD-74681-002 FOR ADDITIONAL DETAIL ON THE HSD8 SIGNAL WAFER.
 5. REFER TO MOLEX DOCUMENT SD-74037-006 FOR ADDITIONAL DETAIL ON THE GUIDANCE MODULE.
 6. REFER TO MOLEX DOCUMENT SD-74026-002 FOR ADDITIONAL DETAIL ON THE POWER MODULE.
 7. MOUNTING SCREWS WILL BE BAGGED WITH EACH CONNECTOR.
 8. PARTS ARE PACKAGED IN TUBES PER PK-70873-5041.



ITEM	PART NUMBER	DESCRIPTION	QTY
1	74046-0187	STIFFENER	1
2	74681-0001	HSD8 WAFER	85
3	74037-8005	POLARIZING/GUIDE MODULE	1
4	73726-0000	GUIDE MODULE MNTG SCREW	1
5	74026-8333	POWER MODULE	1
6	74038-1001	END CAP	1

DAUGHTERCARD HOLE PATTERN (CONNECTOR SIDE)

INITIAL RELEASE EC NO. JDT2002-0620 DRAWN: ATP 01/10/17 CHKD: LAURX 01/10/17 APPR: BIXLER 01/10/17	QUALITY SYMBOLS MAJOR CRITICAL	GENERAL TOLERANCES: (UNLESS SPECIFIED)	SCALE: 2:1	DESIGN UNITS: mm	DIMENSIONS: mm	SHT	REV
		DRAWN BY & DATE: ATP 01/10/17	CHECKED BY & DATE: LAURX 01/10/17	APPROVED BY & DATE: BIXLER 01/10/17	TITLE: 8 ROW HSD DAUGHTERCARD ASSEMBLY SALES DRAWING	MOLEX INCORPORATED	SHEET NO. 1 OF 1
REV: A	DESCRIPTION: INITIAL RELEASE	ANGULAR: ± 2°	CAD FILENAME: SD-74680-061	MATERIAL NO.: 74680-0061	DRAWING NO.: SD-74680-061	THIS DRAWING CONTAINS INFORMATION THAT IS PROPRIETARY TO MOLEX INCORPORATED AND SHOULD NOT BE USED WITHOUT WRITTEN PERMISSION.	