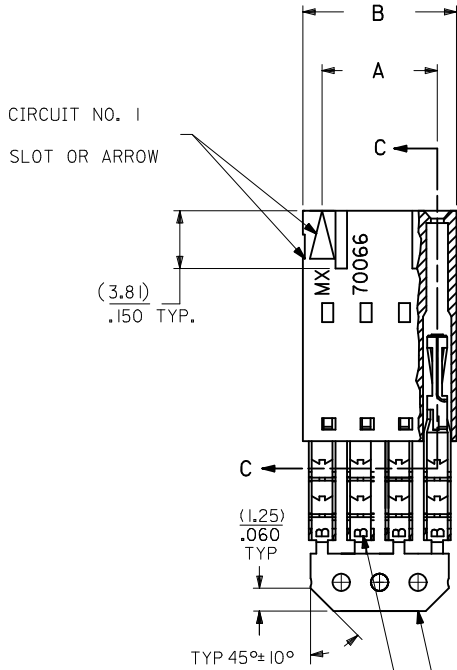
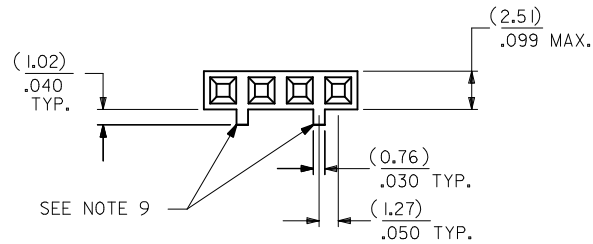
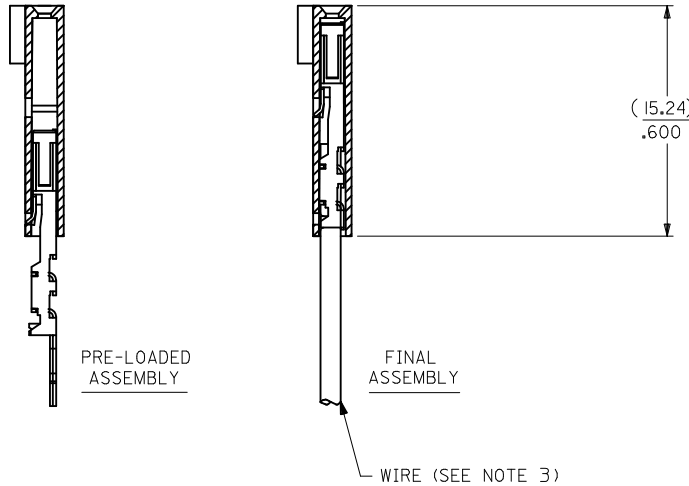


# OPTION C

- NOTES:
- MATERIAL:  
HOUSING: POLYESTER(PBT), GLASS FILLED, UL94 V-0,  
COLOR: BLACK  
TERMINAL: PHOSPHOR BRONZE
  - FINISH:  
15 GOLD: 0.38 MICROMETERS/15 MICROINCHES MINIMUM GOLD IN  
1.91 MICROMETERS/75 MICROINCHES MINIMUM TIN  
OVER NICKEL UNDERPLATE OVERALL
  - TO BE USED WITH 26 AWG STRANDED WIRE WITH (1.35)/.053  
DIAMETER MAXIMUM INSULATION
  - SEE TABLE FOR AVAILABLE CIRCUIT SIZES
  - STANDARD PACKAGING PER PK-70873-0001. OPTIONAL PACKAGING  
MAY BE AVAILABLE, REQUEST DRAWING PK-70400
  - PARTS STACKABLE END TO END ON (2.54)/.100 CENTERS
  - PRODUCT SPECIFICATION: PS-70400
  - SEE DRAWING SDA-70400-\*\*\*\* (SHEET 3) FOR OPTIONAL  
HOUSING DETAILS
  - 4 CIRCUIT SHOWN. 3-25 CIRCUITS HAVE 2 RIBS
  - TO MATE WITH MOLEX PART NUMBERS: A-70374-\*\*\*\*,  
A-70376-\*\*\*\*, A-70390-\*\*\*\*, A-70392-\*\*\*\*,  
A-70544-\*\*\*\*, A-70554-\*\*\*\*, A-70542-\*\*\*\*,  
A-70552-\*\*\*\*, A-70546-\*\*\*\*, A-70556-\*\*\*\*,
  - 2 CIRCUIT ASSEMBLIES SUPPLIED AS GROUPED PAIRS



## SECTION C-C



CKT. SIZE	A	B	EDP. NO.
2	( 2.54 ) .100	( 5.05 ) .199	14-56-3026
3	( 5.08 ) .200	( 7.59 ) .299	14-56-3036
4	( 7.62 ) .300	( 10.13 ) .399	14-56-3046
5	( 10.16 ) .400	( 12.67 ) .499	14-56-3056
6	( 12.70 ) .500	( 15.21 ) .599	14-56-3066
7	( 15.24 ) .600	( 17.75 ) .699	14-56-3076
8	( 17.78 ) .700	( 20.29 ) .799	14-56-3086
9	( 20.32 ) .800	( 22.83 ) .899	14-56-3096
10	( 22.86 ) .900	( 25.37 ) .999	14-56-3106
11	( 25.54 ) 1.000	( 27.91 ) 1.099	14-56-3116
12	( 27.94 ) 1.100	( 30.45 ) 1.199	14-56-3126
13	( 30.48 ) 1.200	( 32.99 ) 1.299	14-56-3136
14	( 33.02 ) 1.300	( 35.53 ) 1.399	14-56-3146
15	( 35.56 ) 1.400	( 38.07 ) 1.499	14-56-3156
16	( 38.01 ) 1.500	( 40.61 ) 1.599	14-56-3166
17	( 40.64 ) 1.600	( 43.15 ) 1.699	14-56-3176
18	( 43.18 ) 1.700	( 45.69 ) 1.799	14-56-3186
19	( 45.72 ) 1.800	( 48.23 ) 1.899	14-56-3196
20	( 48.26 ) 1.900	( 50.77 ) 1.999	14-56-3206
21	( 50.80 ) 2.000	( 53.31 ) 2.099	14-56-3216
22	( 53.34 ) 2.100	( 55.85 ) 2.199	14-56-3226
23	( 55.88 ) 2.200	( 58.39 ) 2.299	14-56-3236
24	( 58.42 ) 2.300	( 60.93 ) 2.399	14-56-3246
25	( 60.96 ) 2.400	( 63.47 ) 2.499	14-56-3256

I.D. SLOT CODE TO WIRE GAUGE CHART	
I.D. SLOT CODE	WIRE GAUGE
B	26 AWG.

PLATING CODE (STRIPE ON CARRIER STRIP)	
PLATING	COLOR
15 GOLD	YELLOW

REMOVE ENG NO. EC NO: UCP2011-110 DRWINMSI BARRA 2010/10/19 CHKDJMORGAN 2010/10/19 APPR:SMILLER 2010/11/24 REV:	QUALITY SYMBOLS ▽=0 ▽=0 ▽=0	GENERAL TOLERANCES (UNLESS SPECIFIED) mm INCH 4 PLACES ± --- ± --- 3 PLACES ± --- ± .010 2 PLACES ± 0.25 ± .014 1 PLACE ± 0.35 ± --- ANGULAR ±1/2°	DIMENSION STYLE MM/IN DRAWN BY DATE MSIBARRA 2010/10/19 CHECKED BY DATE WAZ 1984/10/10 APPROVED BY DATE SMILLER 2010/11/24	SCALE DESIGN UNITS INCH THIRD ANGLE PROJECTION	TITLE ASSEMBLY, SL CONNECTOR SINGLE ROW 2.54/.100 GRID	MATERIAL NO. SEE TABLE	DOCUMENT NO. SDA-70400-0736-0759	SHEET NO. 1 OF 1
		DRAFT WHERE APPLICABLE MUST REMAIN WITHIN DIMENSIONS		THIS DRAWING CONTAINS INFORMATION THAT IS PROPRIETARY TO MOLEX INCORPORATED AND SHOULD NOT BE USED WITHOUT WRITTEN PERMISSION				
		MOLEX MOLEX INCORPORATED						
		MOLEX MOLEX INCORPORATED						