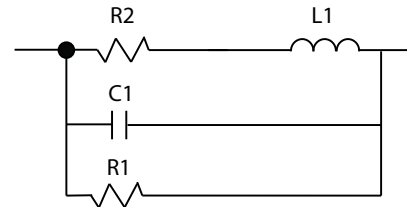


# SPICE-Equivalent circuit model library

**Table 1.** Equivalent circuit data

Part Number	L ( $\mu$ H)	F <sub>res</sub> (MHz)	C1 (pF)	R1 ( $\Omega$ )	R2 Nominal DCR of winding ( $\Omega$ )
MPI4015V2-R22-R	0.22	178.2	3.63	712.04	0.006
MPI4015V2-R33-R	0.33	137.2	4.08	988.51	0.007
MPI4015V2-R47-R	0.47	109.2	4.52	1315.97	0.011
MPI4015V2-R56-R	0.56	97.5	4.76	1516.38	0.012
MPI4015V2-R68-R	0.68	86.0	5.03	1774.33	0.016
MPI4015V2-1R0-R	1	67.1	5.63	2424.10	0.023
MPI4015V2-1R5-R	1.5	51.7	6.33	3365.32	0.048
MPI4015V2-2R2-R	2.2	40.3	7.07	4587.80	0.065
MPI4015V2-3R3-R	3.3	31.1	7.95	6369.13	0.077
MPI4015V2-4R7-R	4.7	24.7	8.81	8479.01	0.108
MPI4015V2-6R8-R	6.8	19.5	9.81	11432.30	0.172
MPI4015V2-100-R	10	15.2	10.97	15618.90	0.245



**Figure 1.** Equivalent circuit

## Disclaimer

The data provided is for reference and is intended for evaluation purposes only. Users should verify all intended results in the end application.

**Eaton**  
**Electronics Division**  
 1000 Eaton Boulevard  
 Cleveland, OH 44122  
 United States  
[www.eaton.com/electronics](http://www.eaton.com/electronics)

© 2018 Eaton  
 All Rights Reserved  
 Printed in USA  
 Publication No. MPI4015V2 Spice  
 April 2018