



### SPECIFICATIONS

Model	Stroke mm	Max Absorption Energy J(kgf·m)	Max Equiv. Mass kg (kgf)	Max Drag N (kgf)	Range of Impact Rate m/s
FW-2530M-C	30	62.7(6.4)	140(140)	6370 (650)	0.3~2

Max. Cycle Rate cycle/min	Max. Absorption Energy per min. J/min(kgf·m/min)	Extension Force N(kgf)	Operating Temp. C°	Mass g
60	490(50)	29.4(3.0) or lower	-5~70	527

Note) Insert R in place of C if ordering urethane cap

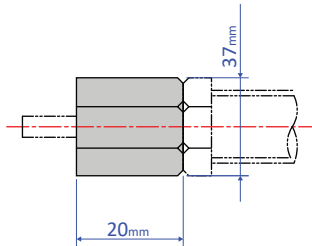
### PRECAUTIONS FOR USE

- Do not use this product without carefully reading the attached owner's manual.
- Ensure that sufficient mounting strength is secured for this product. (As a guideline, it should be 2 to 3 times the maximum drag listed in the catalogue.)
- It cannot absorb impact from both directions at the same time.
- Do not use this product in a vacuum or a location where it may come in contact with oil.
- Ensure that an eccentric load is not applied to the soft absorber. (Allowable eccentric angle:  $\pm 2.5^\circ$ )
- Ensure that an external stopper is also used.

### OPTIONAL PART

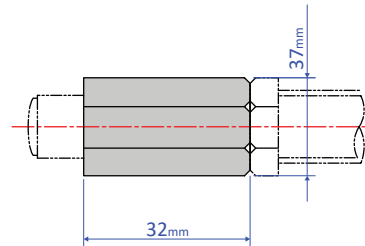
#### Stopper Nut OP-20GB

OP-020GB-S  
(without cap)



Mass: 65

OP-020GB-C  
(with cap)



Mass: 102

Standard nuts are sold separately as well – M25 nut