

ITEM	MOLEX P/N	DESCRIPTION	QTY	UOM
A,B	1053071203	NANOFIT RCPT HSG SGL 3CKT TPA BLK	2	PC
C	1053252003	NANOFIT TPA V0 NAT 3 CKT	2	PC
D	1053002100	NANOFIT CRIMP TERM 2022 TIN	6	PC
E	-	LABEL	1	PC

FROM	TO	CABLE DESCRIPTION	COLOR
A1	B3	20 AWG UL1061 BLACK DISCRETE WIRE	BLACK
A2	B2		
A3	B1		

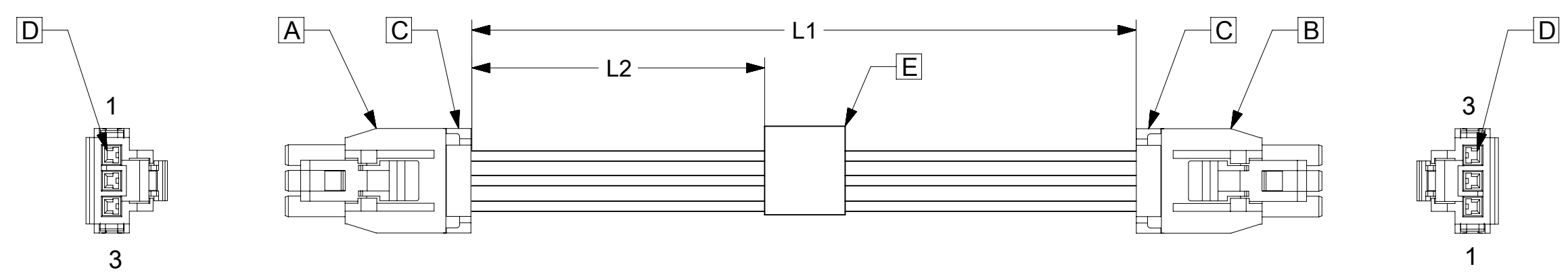


TABLE			
PART NUMBER	L1	L2	TITLE
1451300300	75±5	25REF	Nano-Fit 3 Circuit 75MM
1451300301	150±10	70REF	Nano-Fit 3 Circuit 150MM
1451300303	300±15	145REF	Nano-Fit 3 Circuit 300MM
1451300310	1000±20	495REF	Nano-Fit 3 Circuit 1M

NOTES

1. Cable assembly to be tested 100% for continuity and polarity.
2. Label text must be 2mm max. In height with Arial font.
3. Connector view shown is from mating side.
4. Label must be wrapped in Flag type.

P/N:145130XXXX — MOLEX PN
 MOLEX
 BATCH WK/YR

DATE	REV	DESCRIPTION	REVISED BY
2018.08.10	A	INITIAL RELEASE	SSHIVASHANKA
2019.05.13	A1	TERMINAL QUANTITY HAS BEEN CORRECTED	SSHIVASHANKA

SYMBOLS ▽ = 0 DIMENSION UNITS ▽ = 0 SCALE ▽ = 0 mm NTS ▽ = 0 GENERAL TOLERANCES (UNLESS SPECIFIED) ▽ = 0 ANGULAR TOL ± ° ▽ = 0 4 PLACES ± ▽ = 0 3 PLACES ± ▽ = 0 2 PLACES ± ▽ = 0 1 PLACE ± ▽ = 0 0 PLACES ± ■ = 0 DRAFT WHERE APPLICABLE MUST REMAIN WITHIN DIMENSIONS ▽ = 0	THIS DRAWING CONTAINS INFORMATION THAT IS PROPRIETARY TO MOLEX ELECTRONIC TECHNOLOGIES, LLC AND SHOULD NOT BE USED WITHOUT WRITTEN PERMISSION		CURRENT REV DESC: EC NO: 618461 DRWN: SSHIVASHANKA 2019/05/13 CHK'D: MNARAYAN01 2019/06/07 APPR: MNARAYAN01 2019/06/07		 SEE TABLE PRODUCT CUSTOMER DRAWING		
	INITIAL REVISION: DRWN: SSHIVASHANKA 2018/09/14 APPR: MNARAYAN01 2018/10/03		DOCUMENT NUMBER 4000095318	DOC TYPE PSD		DOC PART 000	REVISION A1
	THIRD ANGLE PROJECTION 	DRAWING A3-SIZE	SERIES 400009	MATERIAL NUMBER SEE TABLE		CUSTOMER GENERAL MARKET	SHEET NUMBER 1 OF 1
	FORMAT: master-b-prod-A3 REVISION: 11 DATE: 2018/01/18						