

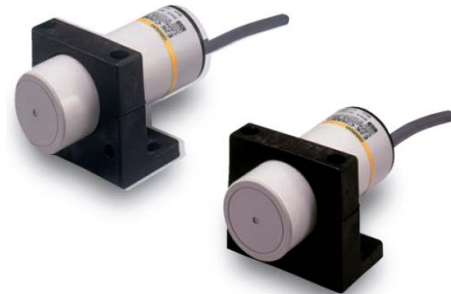
NO: PX-082 **PRODUCT:** Capacitive Proximity Sensor
DATE: February 2016 **TYPE:** Modification Notice

E2K-C25M Cylindrical DC 3-wire Capacitive Proximity Sensors will have Operating Voltage Range Modified

Effective date: February 2016 production

Reason for modification: To conform to the China Compulsory Certification system (CCC) marking requirements, the operating voltage range will be standardized as 10 to 30 VDC on the product label, box label, data sheet, and instruction sheet.

Note: This change does not degrade product performance.



Affected Parts

Models	Specification
E2K-C25MF1	10M
E2K-C20MC1	2M
E2K-C20MC2	2M
E2K-C25ME1	10M
E2K-C25ME1	2M
E2K-C25ME1	5M
E2K-C25ME1-10	2M

Models	Specification
E2K-C25ME2	2M
E2K-C25ME2	5M
E2K-C25ME2-10	2M
E2K-C25ME2-8	2M
E2K-C25MF1	2M
E2K-C25MF1	5M
E2K-C25MF2	2M
E2K-C25MF2	5M

Detail of Differences

Product Nameplate

Before the change	After the change
<p>OMRON MADE IN JAPAN E2K-C25ME1 CAPACITIVE PROXIMITY SENSOR BN ○ NPN NO BK ○ 200mA Max BL ○ 10to40VDC Kyoto, 600-8530 JAPAN</p>	<p>OMRON MADE IN JAPAN E2K-C25ME1 CAPACITIVE PROXIMITY SENSOR BN ○ NPN NO BK ○ 200mA Max RI ○ 10to30VDC Kyoto, 600-8530 JAPAN</p>

Specifications

Before the change	After the change
Operating voltage range: 10 to 40 VDC	Operating voltage range: 10 to 30 VDC

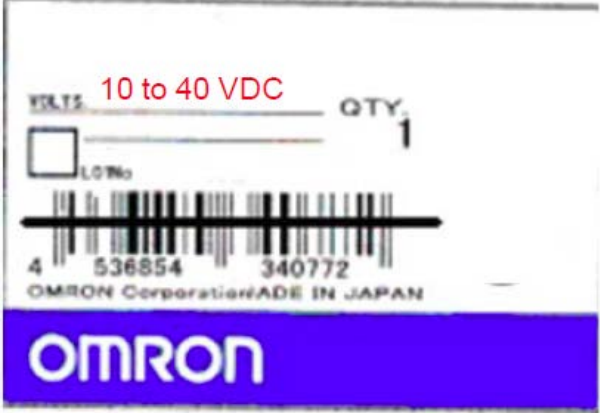

Manual

Before the change				After the change					
	C25ME1 C25ME2	C25MF1 C25MF2	C25MY1(-US) C25MY2(-US)	C20MC1 C20MC2		C25ME1 C25ME2	C25MF1 C25MF2	C25MY1(-US) C25MY2(-US)	C20MC1 C20MC2
Sensing distance	25mm			2	Sensing distance	25mm			2
Supply voltage	12 to 24V DC	100 to 220V AC	12 to 24V DC		Supply voltage	12 to 24V DC	100 to 220V AC	12 to 24V DC	
(Operating voltage range)	(10 to 40V DC)	(90 to 250V AC)	(10 to 36V DC)		(Operating voltage range)	(10 to 30V DC)	(90 to 250V AC)	(10 to 30V DC)	

Data Sheet

Before the change				After the change			
Data sheet				Data sheet			
Item	Model	E2K-C20MC1	E2K-C20MC2	Item	Model	E2K-C20MC1	E2K-C20MC2
Sensing distance *1		20 mm		Sensing distance *1		20 mm	
Sensing distance adjustable range		3 to 20 mm		Sensing distance adjustable range		3 to 20 mm	
Detectable object		Conductors and dielectrics		Detectable object		Conductors and dielectrics	
Standard sensing object		Grounded metal plate: 50 × 50 × 1 mm		Standard sensing object		Grounded metal plate: 50 × 50 × 1 mm	
Differential travel		15% max. of sensing distance (when adjusted to 20 mm ±10%)		Differential travel		15% max. of sensing distance (when adjusted to 20 mm ±10%)	
Response frequency *2		40 Hz		Response frequency *2		40 Hz	
Power supply voltage (operating voltage range)		12 to 24 VDC (10 to 36 VDC) ripple (p-p): 10% max.		Power supply voltage (operating voltage range)		12 to 24 VDC (10 to 30 VDC) ripple (p-p): 10% max.	
Item	Model	E2K-C25M□1	E2K-C25M□2	Item	Model	E2K-C25M□1	E2K-C25M□2
Sensing distance *		25 mm		Sensing distance *		25 mm	
Sensing distance adjustable range		3 to 25 mm		Sensing distance adjustable range		3 to 25 mm	
Detectable object		Conductors and dielectrics		Detectable object		Conductors and dielectrics	
Standard sensing object		Grounded metal plate: 50 × 50 × 1 mm		Standard sensing object		Grounded metal plate: 50 × 50 × 1 mm	
Differential travel		15% max. of sensing sensing distance (when adjusted to 25		Differential travel		15% max. of sensing sensing distance (when adjusted to 25	
Response frequency		70 Hz		Response frequency		70 Hz	
Power supply voltage (operating voltage range)		12 to 24 VDC (10 to 40 VDC) ripple (p-p): 10% max.		Power supply voltage (operating voltage range)		12 to 24 VDC (10 to 30 VDC) ripple (p-p): 10% max.	

Individual Box Label

Before the change	After the change
<p data-bbox="110 205 251 233"><SAMPLE></p>  <p>The image shows a sample box label for an Omron relay. At the top, it says "VRLTS" followed by "10 to 40 VDC" in red text. To the right, it says "QTY. 1". Below this is a small square box labeled "LOT No.". A barcode is present with the numbers "4 536854 340772" printed below it. At the bottom, it says "OMRON Corporation MADE IN JAPAN" and features the Omron logo on a blue background.</p>	<p data-bbox="836 205 977 233"><SAMPLE></p>  <p>The image shows a sample box label for an Omron relay, identical in layout to the one before the change, but with the voltage specification updated. It now says "VRLTS" followed by "12 to 24 VDC" in red text. The rest of the label, including "QTY. 1", "LOT No.", the barcode with numbers "4 536854 340772", and the Omron logo, remains the same.</p>

Specifications in this product news are as of the issue date and are subject to change without notice. Only main changes in specifications are described in this document. Please be sure to read the relevant catalogs, datasheets, product specifications, instructions, and manuals for precautions and necessary information when using products.