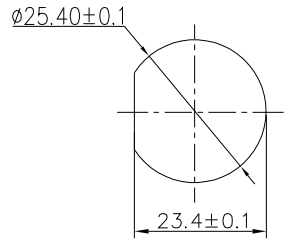
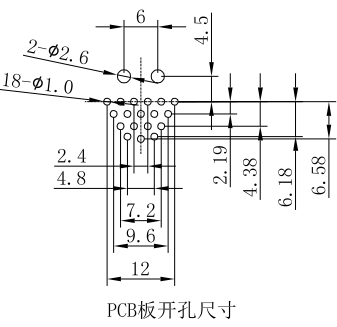


REV.	ECN NO.	DESCRIPTION	SIGN	DATE
C1	N/A	INITIAL DRAWING	Liu	2020/05/16

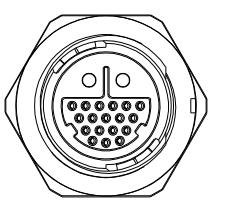


RECOMMENDED PANEL Cut-Out



22XXX535-02

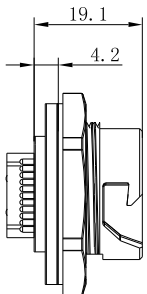
Pin Number



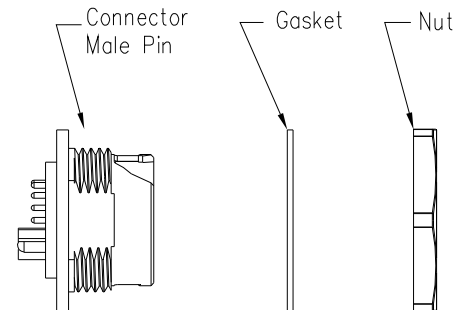
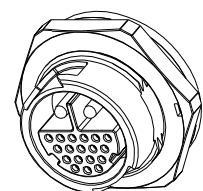
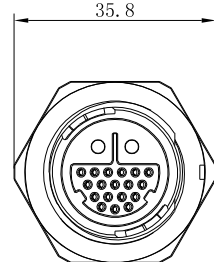
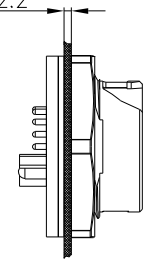
2+18 Pin

P/N: 24218535-02

Pin Assignments  
Front View



Panel T: Max 2.2



Specification:

- 1.Operation Temperature:  $-45^{\circ}\text{C} \sim 105^{\circ}\text{C}$ .
- 2.Insulation Resistance:  $100\text{M}\Omega$  at DC500V.
- 3.Contact Resistance:  $<10\text{m}\Omega$ .
- 4.Withstand Voltage: 2000V AC
- 5.Operating Current: 20A+2A
- 6.Operating Voltage: AC 300V
- 7.Waterproof Rate: IP67 (Mated)
- 8.Housing: Nylon, Black
- 9.Male Pin: Copper Alloy, Gold Plated
- 10.Female Pin: Copper Alloy, Gold Plated
- 11.Gasket: Silicon Gray
- 12.Panel Nut: Nylon, Orange
- 13.Torque Rate:  $0.8 \sim 1.0\text{N} \cdot \text{m}$
- 14.RoHS Compliant.
- 15.Mating Cap P/N: 806-00058-00

UNIT:mm TOLERANCE .X $\pm 0.25$ .XX $\pm 0.15$ .XXX $\pm 0.05$ ANGLES $\pm 1^{\circ}$	DESCRIPTION Large Series Push Lock Female socket With Male Pin			PART NO 24218535-02	DRAWN BY Liu	DATE 2020/05/16
	SCALE 1:1	SHEET 1 OF 1		DWG NO	CHECKED BY Mo	DATE 2020/05/16
	REV. C1	SIZE A4		* : Inspection Item	CUSTOMER	APPROVED BY Adley

THIS INFORMATION IS CONFIDENTIAL AND IS DISCLOSED TO YOU ON CONDITION THAT NO FURTHER DISCLOSURE IS MADE BY YOU TO OTHER THAN CHOGORI PERSONNEL WITHOUT AUTHORIZATION FROM CHOGORI CORP.