

6

5

4

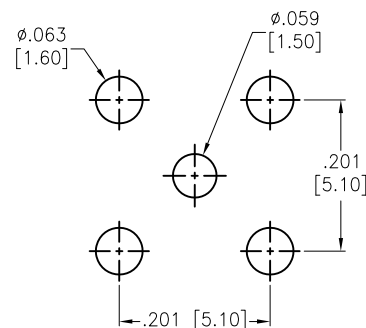
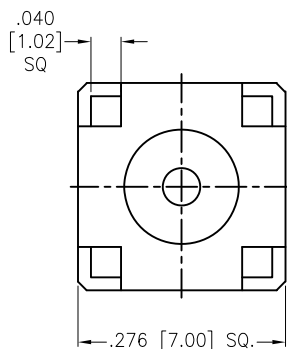
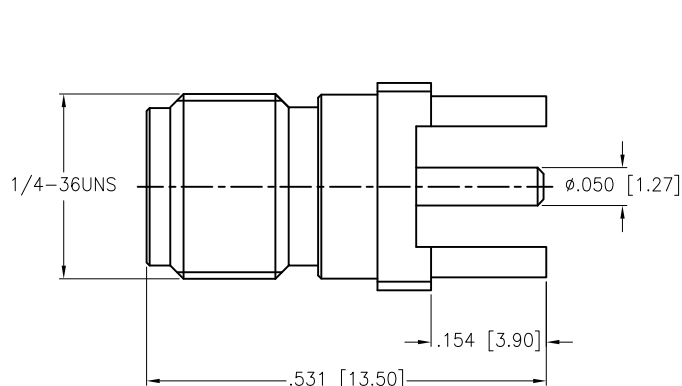
3

2

1

APPROVED: _____
 DATE: _____ TITLE: _____

Rev	AWO #	Description	Date	Appr
-		RELEASED	12/15/17	
A		UPDATE DRAWING	10/23/18	AY/RC
B		UPDATE SPEC.	10/15/20	AY/TL



RECOMMENDED PCB LAYOUT

CONTACT PIN	BRASS	GOLD
INSULATOR	PTFE	WHITE
BODY	BRASS	GOLD
DESCRIPTION	MATERIAL	FINISH

SPECIFICATIONS:

Electrical:
 Nominal Impedance: 50 ohms
 Frequency range: DC-6 GHz
 Working voltage: 500 VOLTS max.
 Proof voltage: 1,000 VOLTS
 VSWR: 1.2 max
 Insert Loss: 0.3dB
 Temperature Rating:
 Operating temperature: -65°C to +165°C
 Environmental:
 Lead free, RoHS compliant.



UNLESS OTHERWISE SPECIFIED ALL DIMENSIONS ARE INCHES [MM] TOLERANCES: EXCEPT AS NOTED		
INCHES HOLES		
.X ± .10	Ø.X ± .10	
.XX ± .020	Ø.XX ± .015	
.XXX ± .015	Ø.XXX ± .010	
APPROVALS		DATE
DRAWN	AY	12/15/17
CHECKED	RC	12/15/17
APPROVED		



909 Rahway Avenue,
 Union, NJ 07083
 Phone: 908-687-5000
 Fax: 908-687-5710

TITLE		
RF CONNECTOR, SMA STR PCB JACK		
SIZE	PART NO.	REV.
X	RF2-04A-T-00-50-G	B
REF: S00277T	SCALE: NTS	SHEET 1 OF 1

6

5

4

3

2

1