

January, 2012

Attn.: \_\_\_\_\_

**HIROSE ELECTRIC CO., LTD.**

5-23, OSAKI 5-CHOME, SHINAGAWA-KU, TOKYO, JAPAN

## Notice of Change in Production Site of the DF11 Series (SMT Type) and Change in Shape and Production Site of Reinforcement Fittings, and Request for Your Acknowledgement

---

Hirose would like to take this opportunity to thank you sincerely for your support, and we hope this letter finds you well and prosperous.

We are writing today to inform you of a change in the production site of some products in our highly regarded DF11 Series, as well as a change in the shape and production site of the reinforcement fittings used in these products. We apologize for the belatedness of this notice, and we are sorry for any inconvenience.

We request that you kindly acknowledge this matter.

### 1. Affected Products

	Product Code	Product Name
1	543-0811-2 50	DF11G-6DP-2V(50)
2	543-0812-5 50	DF11G-8DP-2V(50)
3	543-0815-3 50	DF11G-14DP-2V(50)
4	543-0818-1 50	DF11G-20DP-2V(50)
5	543-0824-4 50	DF11G-32DP-2V(50)
6	543-2021-0 21	DF11Z-12DP-2V(21)
7	543-2027-7 27	DF11Z-24DP-2V(27)
8	543-2029-2 27	DF11Z-28DP-2V(27)
9	543-2050-9 27	DF11CZ-10DP-2V(27)
10	543-2058-0 27	DF11CZ-26DP-2V(27)
11	543-2141-2 20	DF11GZ-16DP-2V(20)

## 2. Description of Changes

### (1) Change in products

#### ■ Change in assembly site

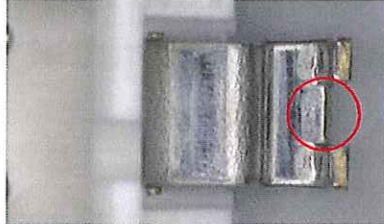
Previous products: Assembly plant in Indonesia

⇒ After change: Automated production at factory in Japan

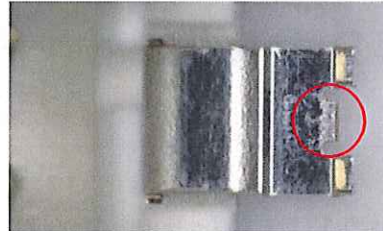
### (2) Change in reinforcement fittings

#### ■ Change in shape of reinforcement fittings (indicated within red circle)

Previous fittings



After change



#### ■ Change in reinforcement fitting production site

Previous fittings: Production in Japan ⇒ After change: Production in Malaysia

## 3. Reason for Changes

Due to the DF11 Series (SMT type) production facility being affected by the March 11 earthquake, assembly facilities were set up at our plant in Indonesia. To meet tight deadlines, however, we decided to set up new automated facility at a plant in Japan and produce the products listed above there.

Furthermore, the shape of the reinforcement fitting was changed to improve productivity.

## 4. Differences Resulting from the Changes

There is a slight difference in the shape of the reinforcement fitting, but the products' performance remains unchanged.

## 5. Time of Implementation of Changes

Production with these changes began in August 2011.

## 6. Request for your Acknowledgement

We kindly request that you let a Hirose account representative know that you acknowledge this matter by March 31, 2012.

If you should have any questions, please feel free to contact a Hirose account representative.

Acknowledgment

Business 430-11202

January, 2012

**Notice of Change in Production Site of the DF11 Series (SMT Type) and Change in Shape and Production Site of Reinforcement Fittings - Request for Your Acknowledgement**

We acknowledge the aforementioned matter.

Representative: \_\_\_\_\_

Signature: \_\_\_\_\_

HIROSE ELECTRIC CO., LTD.