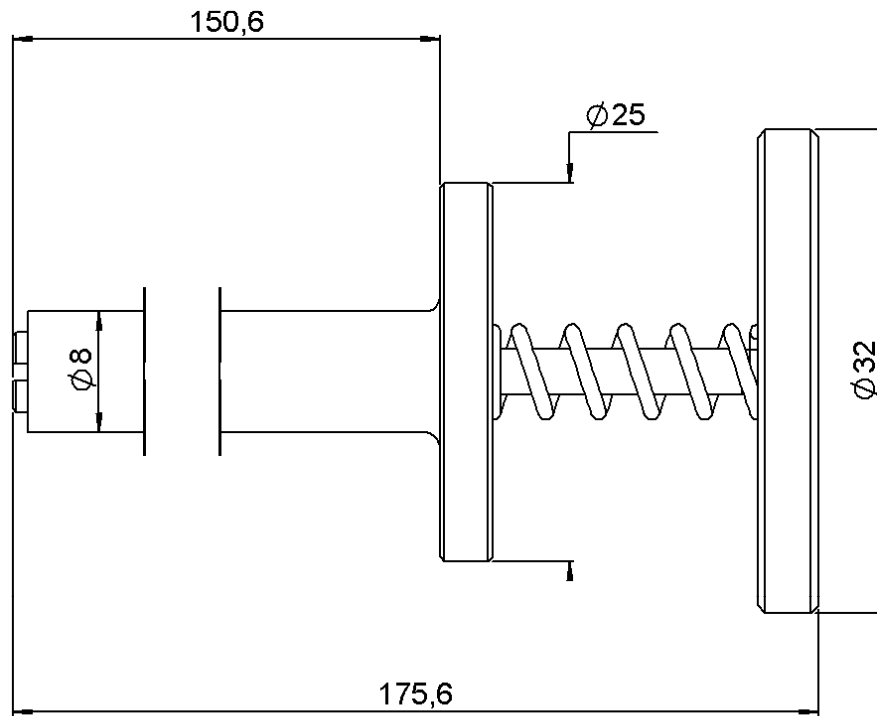
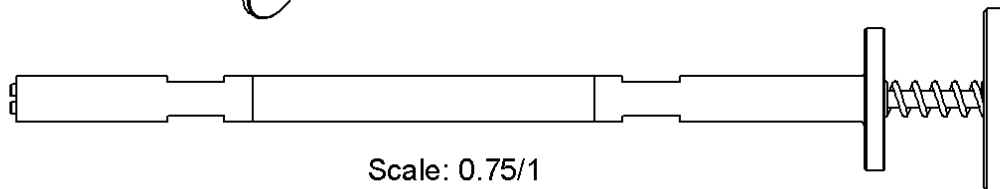
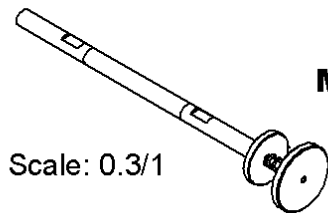


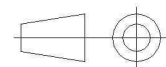
| | | | |
|----------|-------------|------------|------------------------|
| PAGE 1/2 | ISSUE 1439A | SERIES OUT | PART NUMBER R282918120 |
|----------|-------------|------------|------------------------|



MATERIAL: STAINLESS STEEL PASSIVATED

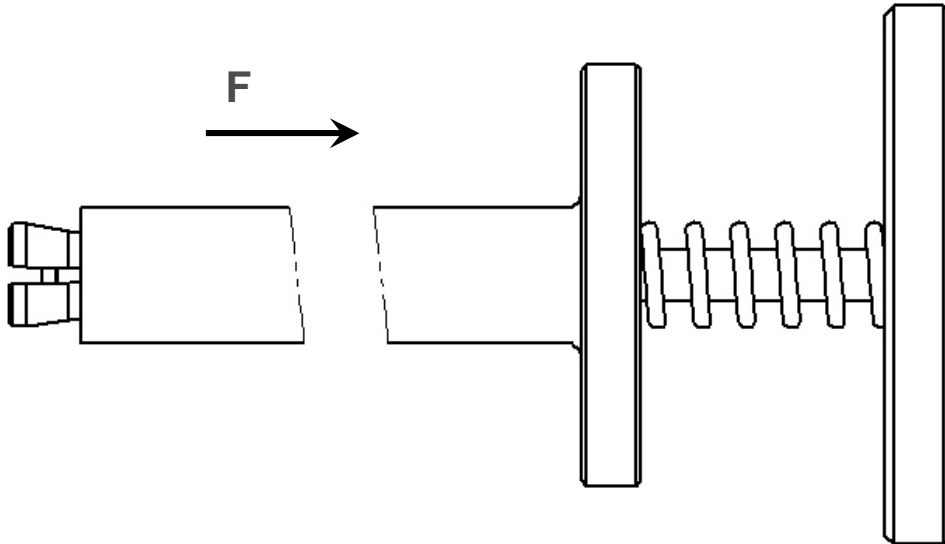


All dimensions are in mm.

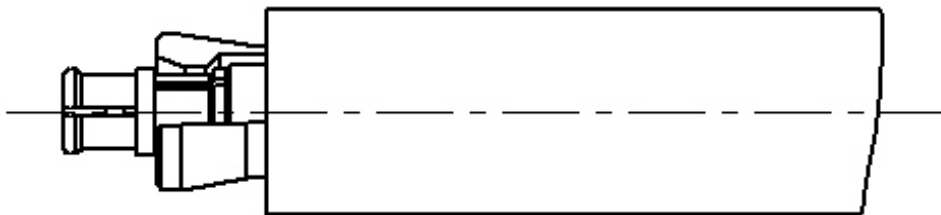


| | | | |
|----------|-------------|------------|------------------------|
| PAGE 2/2 | ISSUE 1439A | SERIES OUT | PART NUMBER R282918120 |
|----------|-------------|------------|------------------------|

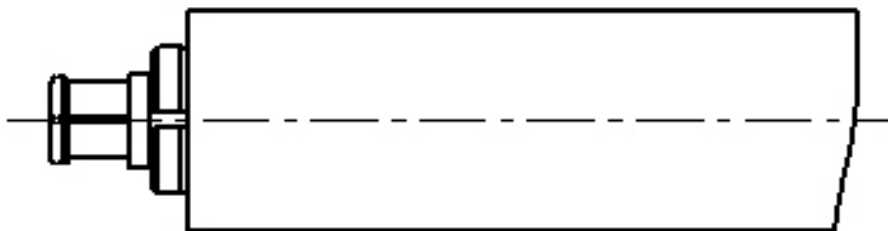
-1- Push in F direction to open the tool.



-2- Place the adaptor into the tool until it bottoms against.



-3- Push on the adaptor, and release the smallest tool diameter. (the force to fixe the adaptor is applied by a spring).



-Push on the biggest tool diameter to place the adaptor.
-To remove the adaptator, pull off on the biggest tool diameter.