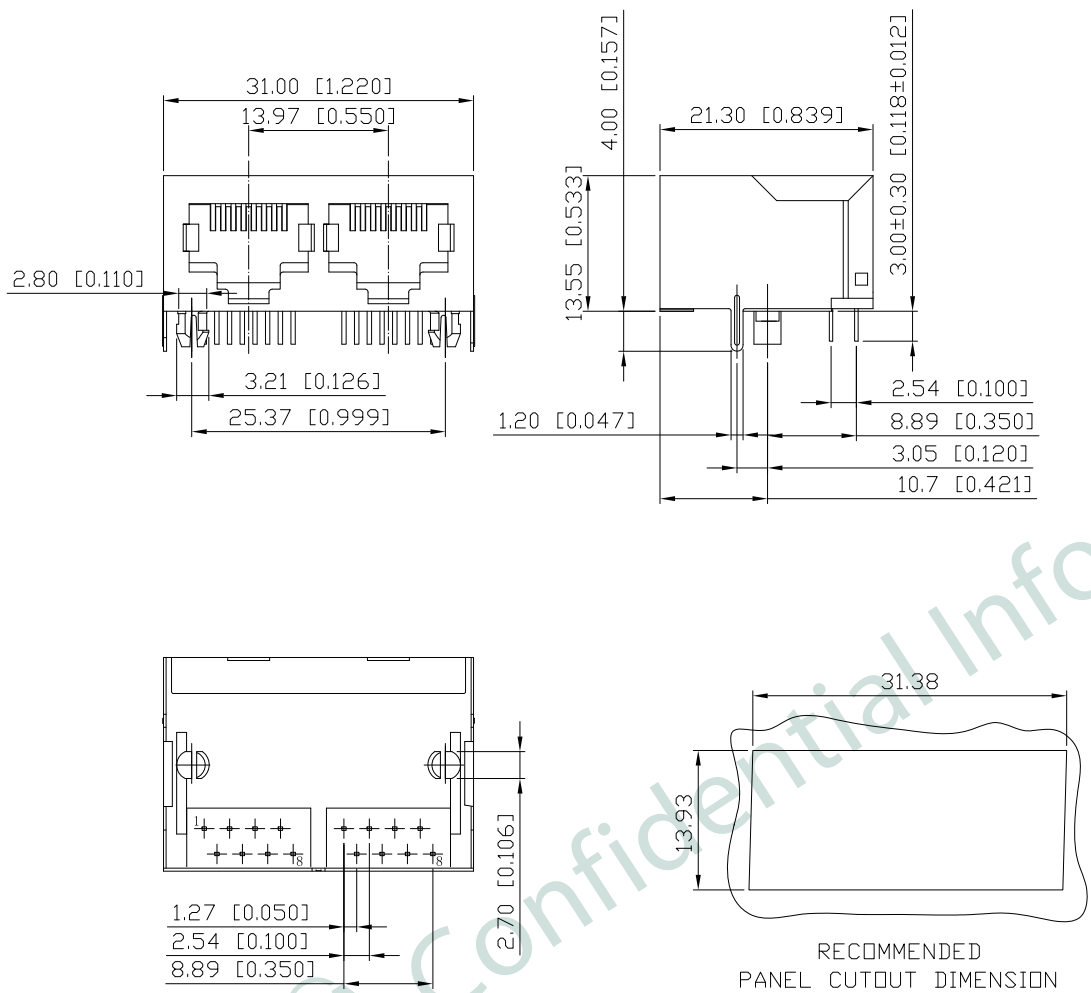


1. MECHANICAL DIMENSIONS :

REV.	DATE	DESCRIPTION
01	Mar. 07, '19	1st RELEASE

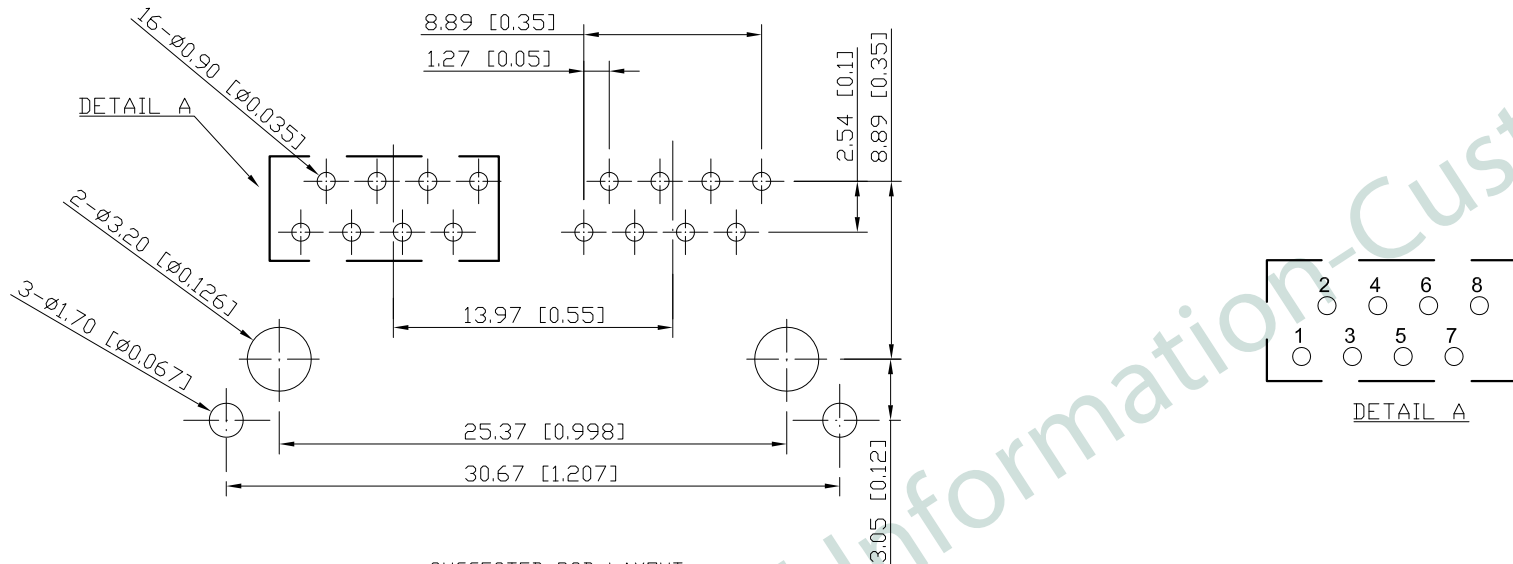
A  
B  
C  
D  
E  
F



- NOTES:
- MATERIAL:  
HOUSING: HIGH THERMOPLASTIC, UL94V-0, BLACK  
CONTACTS:  $\phi=0.46\text{mm}$  PHOS-BRONZE,  
GOLD FLASH PLATING ON CONTACT AREA,  
NICKEL UNDERPLATING OVERALL  
SHIELD: COPPER ALLOY, NICKEL PLATING
  - OPERATING TEMPERATURE:  $-40^{\circ}\text{C}\sim+85^{\circ}\text{C}$
  - INSERTION FORCE: 4 POUNDS MAX.  
EXTRACTION FORCE: 4 POUNDS MAX.
  - DURABILITY: 750 MATING CYCLED MIN.
  - CAVITY CONFORMS TO FCC RULES AND REGULATIONS PART 68, SUBPART F.
  - UNSPECIFIED TOLERANCE: .XX  $\pm 0.25[0.010]$   
.X  $\pm 0.30[0.012]$

PART NO		KRK-S-02-8-8-0-FA5-XXX		
TITLE	RJ45 1X2, 8P8C, W/O LED, SHIELDED.			
REV : 01				
UNIT	DRAWN	CHKD	DATE	SHEET
mm[inch]	CINDY	VINCENT	Mar. 07, '19	1 of 3

2. PCB LAYOUT :



SUGGESTED PCB LAYOUT  
TOP VIEW SCALE 2:1  
DIMENSIONAL TOLERANCE: .XX ±0.08[0.003]

KRK-S-02-8-8-0-FA5-XXX

PRODUCT SERIES  
KRK: LATCH DOWN THRU HOLE

SHIELDED TYPE  
S: SHIELDED

NO. OF PORTS

NO. OF POSITION

NO. OF CONTACT

RUNNING CODE

LED COLOR OPTION

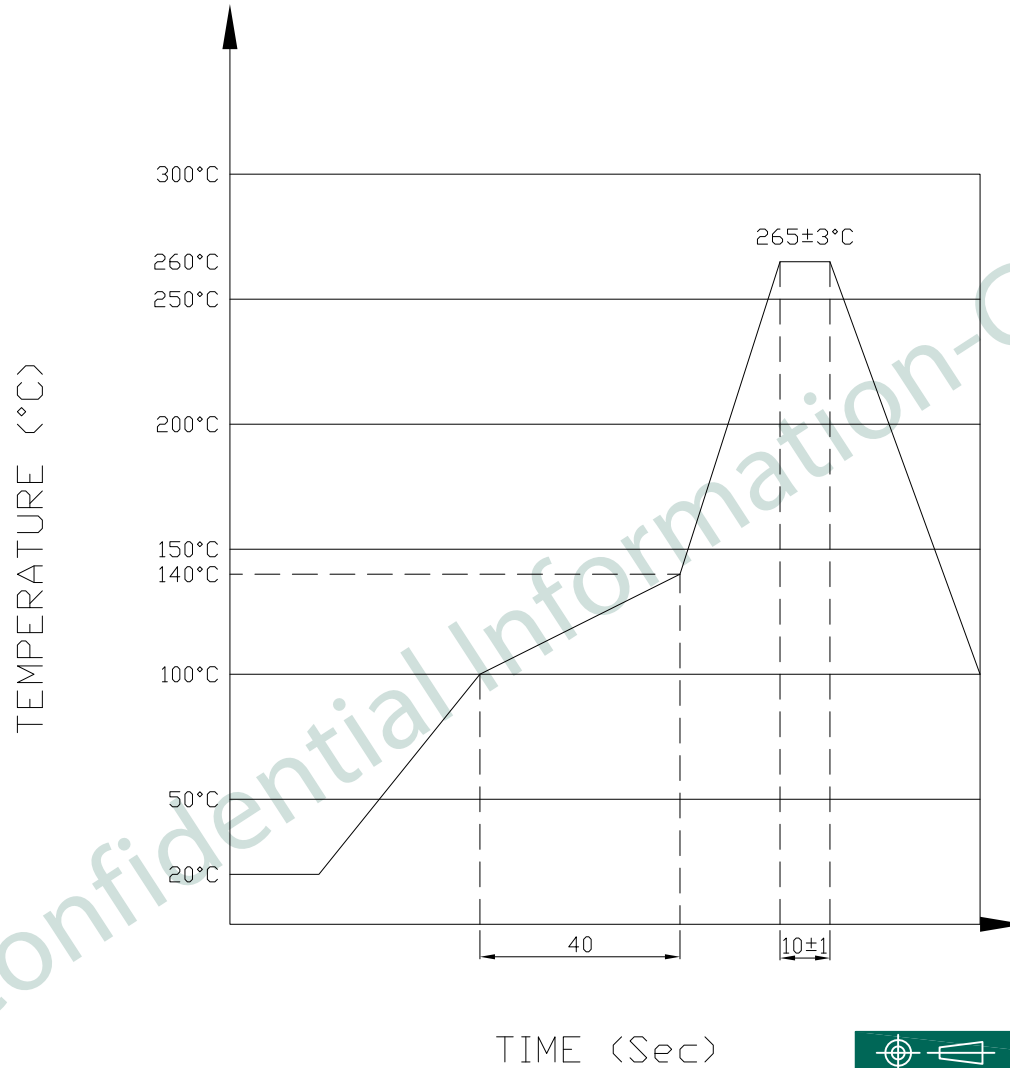
SERIAL NUMBER

CONTACT GOLD PLATING  
5: GOLD FLASH


CUSTOMER CODE

PART NO		KRK-S-02-8-8-0-FA5-XXX		
TITLE	RJ45 1X2, 8P8C, W/O LED, SHIELDED.			
REV : 01				
UNIT	DRAWN	CHKD	DATE	SHEET
mm[inch]	CINDY	VINCENT	Mar. 07, '19	2 of 3

3. PROFILE OF WAVE SOLDER :



The measuring point for the specified temperature shall be on the soldered part of the lead

 PART NO		KRK-S-02-8-8-0-FA5-XXX		
TITLE		RJ45 1X2, 8P8C, W/O LED, SHIELDED.		
REV : 01				
UNIT	DRAWN	CHKD	DATE	SHEET
mm[inch]	CINDY	VINCENT	Mar. 07, '19	3 of 3