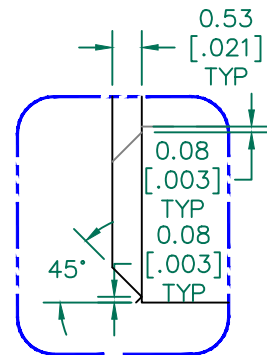


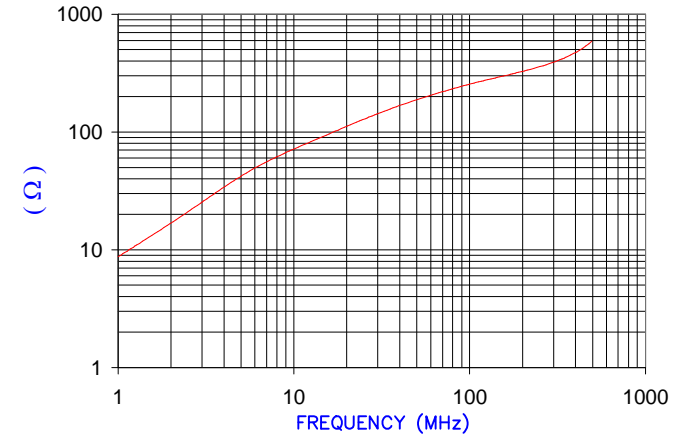
SECTION A-A
SEE DETAIL "A"



DETAIL "A"
CHAMFER
SCALE=8:1

IMPEDANCE (Z)			
Frequency	25 MHz	100 MHz	300 MHz
Nominal (REF)	124 Ω	242 Ω	390 Ω
Minimum	- Ω	194 Ω	- Ω

Z vs. FREQUENCY
(REF. ONLY)



AGILENT E4991A Impedance/Material Analyzer
HP 16092A-Test Fixture REF 3146

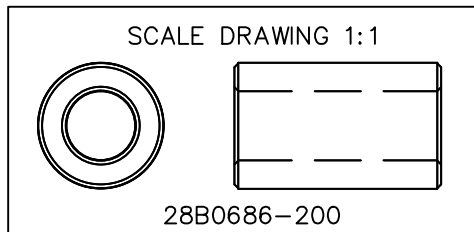
FERRITE CORE DIMENSIONS (SPEC): mm [in]

A	17.42 [.686]	±	0.36 [.014]
B	9.53 [.375]	±	0.20 [.008]
C	28.58 [1.125]	±	0.76 [.030]

WEIGHT/1000 23.50 kgs [51.80 Lbs]

NOTES: UNLESS OTHERWISE SPECIFIED

1. COSMETIC SPECIFICATION REFER TO WI-QA-038.



ROHS

DIMENSIONS ARE IN mm [INCHES].				This print is the property of Laird Tech. and is loaned in confidence subject to return upon request and with the understanding that no copies shall be made without the written consent of Laird Tech. All rights to design or invention are reserved.					
M	UPDATE THE LOGO	05/13/15	QIU	PROJECT/PART NUMBER: 28B0686-200	REV	M	PART TYPE: FERRITE CORE	DRAWN BY: DJB	
L	UPDATE COMPANY LOGO	06/11/10	JUN						
K	UPDATE Z SPEC AND COMPANY LOGO	06/12/07	JRK						
J	UPDATE Z SPEC @100MHz MIN	09/22/06	JRK						
H	UPDATE Z SPEC @100MHz ADD REF #	06/17/04	TMB						
G	CHANGE PRINT FORMAT, Z SPEC FORMAT & P/N TO -200 REMOVE COATING DIMS	05/23/03	TMB						
F	UPDATE PRINT FORMAT FOR ELECTRONIC DBASE ADD DETAIL "A" REV. WEIGHT/K	02/19/01	TMB	DATE:	07/03/90	SCALE:	2 : 1	MATERIAL:	FERRITE
E	UPDATED Z SPECS	04/17/97	BAC	CAD #	28B0686-200-M	TOOL #	B0686		
REV	DESCRIPTION	DATE	INT						