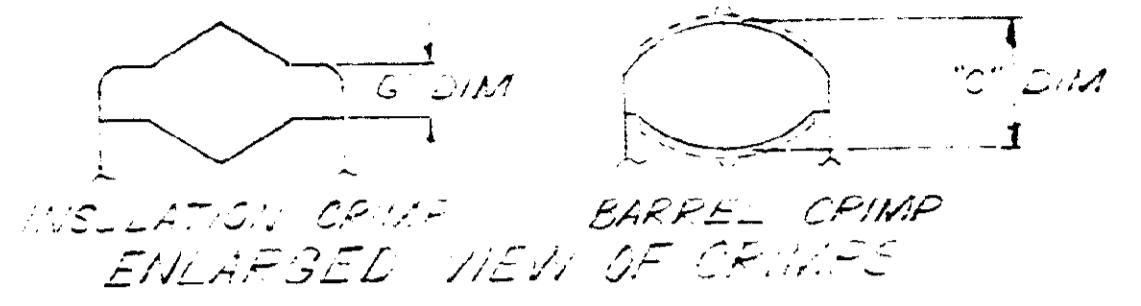
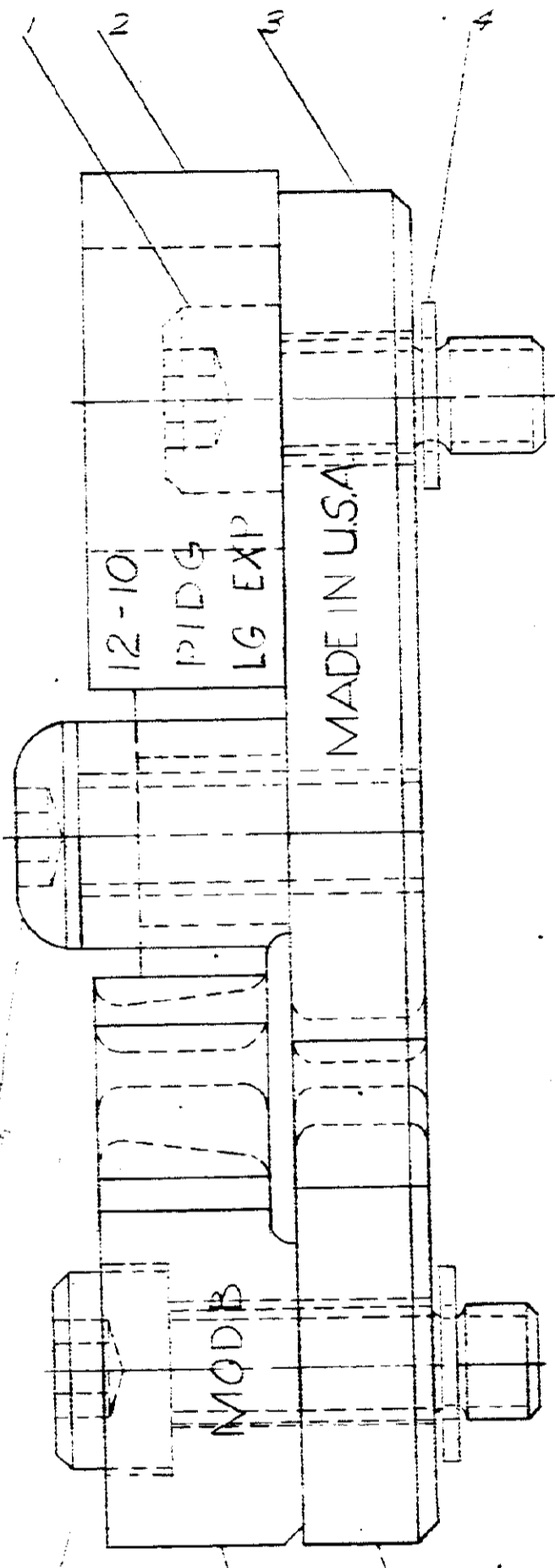
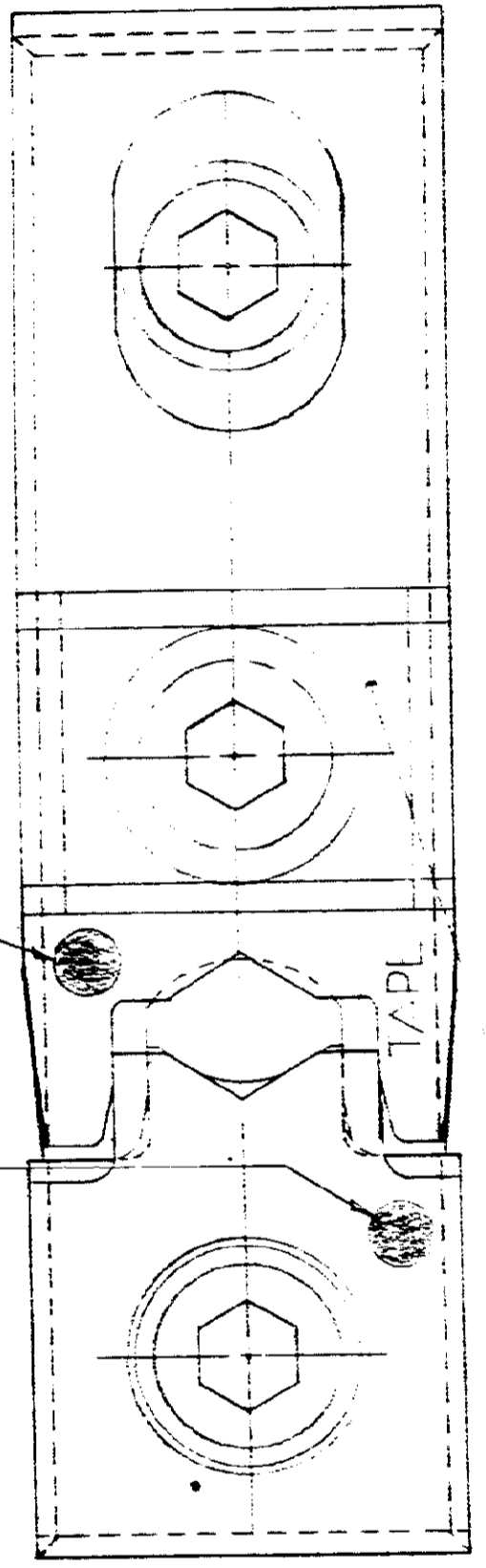
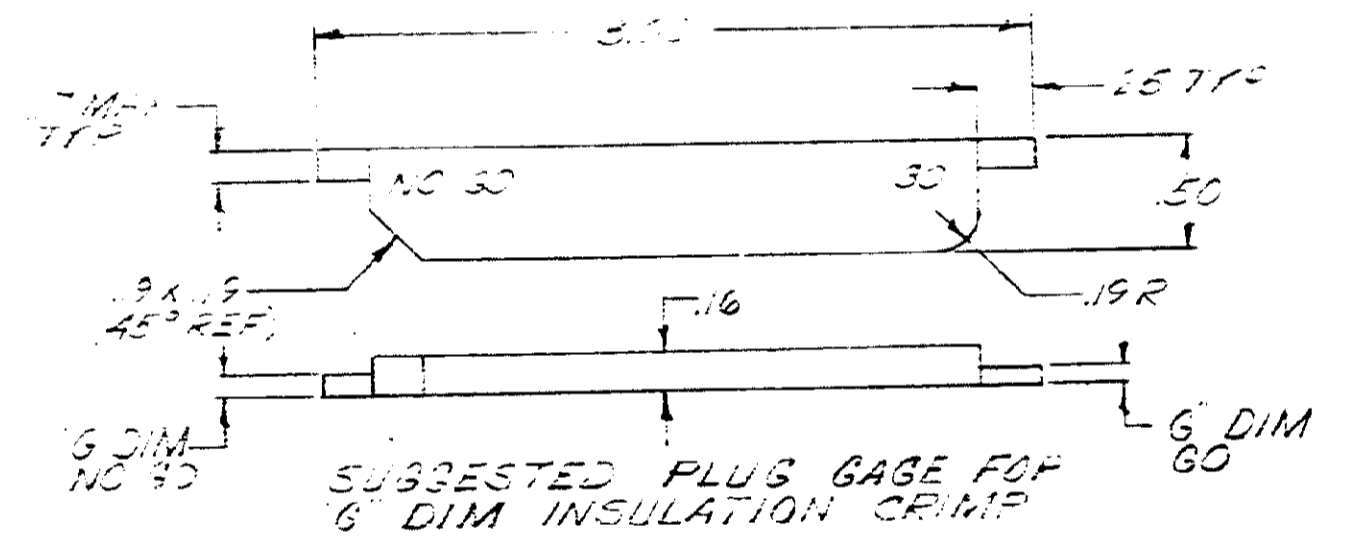
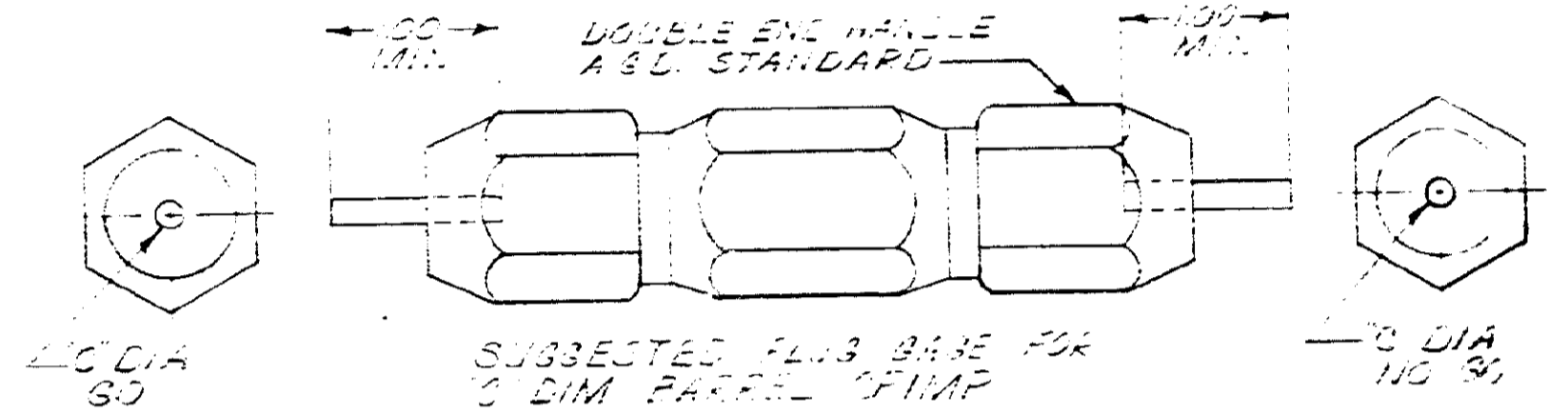


NUMBER 69897

PLUG GAGE DIMENSIONS APPLY WHEN TOOL IS  
 BOTTOMED BUT NOT UNDER PRESSURE.



G DIM AT P2 #1	C DIA
90	NO 90
.064	.064
	.37
	.175



SUPERSEDED BY IS-2423

307275-2	SADDLE	3
12-59577-8	SCREW 10-32 UNF-5A X .562 LONG	8
1 59781-5	SCREW SPECIAL	7
12-59619-2	ANVIL-INSULATION	6
1 59633-4	ANVIL	5
21-21043-3	FINS-RETAINING	4
1 59773-1	INDENTER	3
1 307275-2	INDENTER-INSULATION	2
1 59781-1	SCREW-SPECIAL	1

DESCRIPTION	NUMBER	NAME	REMARKS	ITEM NO.
REQUIRED PER ASSEMBLY	© 1969 BY AMP INCORPORATED. ALL RIGHTS RESERVED. AMP PRODUCTS COVERED BY PATENTS AND/OR PATENTS PENDING.			
DR. E. Benfield 12-12-69	WATER AL AND FIN SH <b>AMP</b> AMP INCORPORATED HARRISBURG, PENNA.			
CHK. J. J. Freney 12-12-69	USED ON 69875			
DE. J. J. Freney	WIRE - RANGE - INSULATION 12-10 TYPE CC P1D4 LG EXP			
APP. J. J. Freney 12-12-69	TOLERANCE EXCEPT AS NOTED = 1" 0' SCALE 4-1 LOC. M.C. 69897			
	NAME DIE ASSEMBLY MOD B			

REVISION RECORD	ECN	DATE
REVISED BY IS-2423		12-29-69
B REVISED		12-24-69

DIMENSIONS IN INCHES DO NOT SCALE PRINT