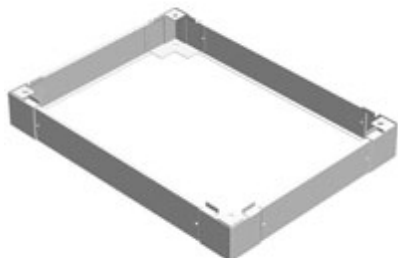




Quality Products. Service Excellence.

Plinth *IPCPL Series*



- Plinths install under enclosure for additional cable entry space or lift access
- Adds 4" to overall enclosure height.
- 4 corners bolt to enclosure with 4 removable fill panels.
- Not compatible with leveling feet.
- Comes complete with all mounting hardware.
- Two plinths required for IMET, see chart.
- Finished in beige.



Part No	Fits IME/IPC/IFMD Nominal Dimension		IMET (2pc.)
	B	C	B
IPL64	600	400	1200
IPL65	600	500	1200
IPL66	600	600	1200
IPL68	600	800	1200
IPL76	700	600	-
IPL78	700	800	-
IPL84	800	400	-
IPL85	800	500	1600
IPL86	800	600	1600
IPL88	800	800	1600
IPL105	1000	500	2000
IPL106	1000	600	2000
IPL108	1000	800	2000

Data subject to change without notice

© 2019. Hammond Manufacturing Ltd. All rights reserved.