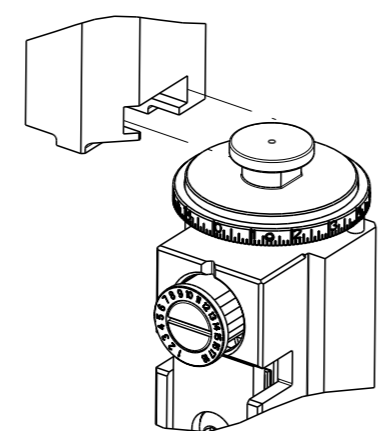


THIS DRAWING IS UNPUBLISHED.	RELEASED FOR PUBLICATION	20	
COPYRIGHT 20 BY TYCO ELECTRONICS CORPORATION. ALL RIGHTS RESERVED.			
PART NUMBER	REVISION	DESCRIPTION	FEED TYPE
2151711-2	F	FINE CRIMP HEIGHT ADJUST	PNEUMATIC
7-2151711-2	F	PNEUMATIC AND CRIMP TOOLING KIT	PNEUMATIC
7-2151711-7	A	CRIMP TOOLING KIT	-

ATLANTIC VERSION TERMINATOR INTERFACE ADAPTER



APPLICATOR DATA		
CRIMP	SIZE	TYPE
WIRE	3.63 mm [.143]	F
INSUL	7.20 mm [.283]	O
APPLICATOR INSTRUCTIONS 408-35042		

TERMINAL DATA: DELPHI PACKARD TERMINAL & CRIMP SPECIFICATION			
TERMINAL NAME: MALE METRI-PACK 480			
WIRE STRIP LENGTH		INSULATION DIAMETER RANGE	
5.20-6.00 mm [.205-.236 IN]		Ø3.49-5.24 mm [.137-.206 IN]	
TERMINAL APPLICATION SPECIFICATION	DELPHI PACKARD		
TERMINALS APPLIED			
TE TERMINAL	DELPHI PACKARD TERMINAL	TE SEAL	DELPHI PACKARD SEAL
1572019-1	12052172	1572026-1	15324989

WIRE SIZE	CRIMP HEIGHT mm [INCH]	CRIMP HEIGHT REFERENCE SETTING
5.00mm2	2.25+/-0.05 [.089+/- .002]	8.5

- RECOMMENDED SPARE PARTS
- REFER TO SUPPLIED INSTRUCTION SHEET FOR CLEANING, LUBRICATION AND STORAGE OF APPLICATOR.
- APPLY PART NUMBER 2-23419-6 LOCTITE TO THREADS OF ITEM 242.
- CRIMP HEIGHT REFERENCE SETTING WAS THE SETTING USED WHEN THE APPLICATOR WAS QUALIFIED AT THE FACTORY. ADJUSTMENT MAY BE NECESSARY WHEN RUNNING APPLICATOR IN THE FIELD.
- TERMINAL PITCH IS NOT COMPATIBLE WITH MECHANICAL FEED.
- APPLY TORQ-SEAL IN ALLEN SOCKET TO FILL HOLE AFTER FLAT HD HAS BEEN ADJUSTED TO CORRECT HEIGHT AT QUALIFICATION. APPLY #1-23419-5 LOC-TITE TO THREADS.
- 7. UNLESS SPECIFIED OTHERWISE TORQUE VALUES SHALL BE USED PER DOCUMENT, 101-35000.
- CUT TO LENGTH AT ASSEMBLY

**\*WARNING**  
ON INSTALLATION, SET WIRE DISC TO CRIMP HEIGHT REFERENCE SETTING FOR LARGEST WIRE SIZE. CRIMP HEIGHT REFERENCE SETTINGS GREATER THAN THE VALUE SHOWN MAY CAUSE DAMAGE TO THE CRIMP TOOLING, REFER TO THE INSTRUCTION SHEET FOR PROPER SETUP AND ADJUSTMENTS.

**ATLANTIC VERSION**  
Shown on sheets 1 of 4 & 2 of 4  
(Pacific version shown on sheets 3 of 4 & 4 of 4)

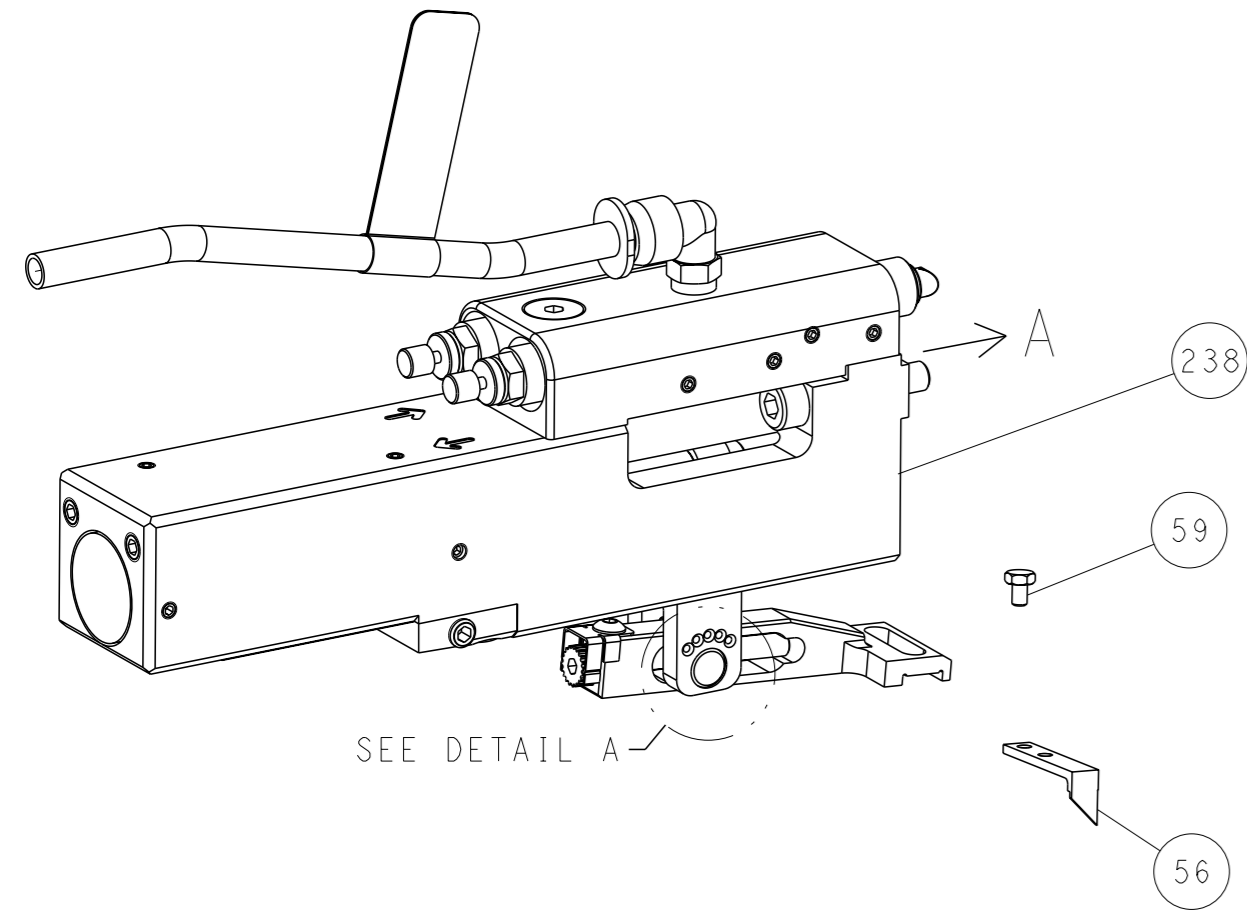
LOC	DIST	REVISIONS					
A	66	P	LY#	DESCRIPTION	DATE	OWN	APVD
		C		ECR-17-008938	20JUN2017	TB	CT
		D		ECR-18-016285	18OCT2018	FZ	KZ
		E		ECR-20-013429	22SEP2020	FJ	TE
		F		ECR-20-014009	30SEP2020	JWC	RR

	-	1	1	2280441-1	INSERT, SHEAR	282
	-	1	1	2119641-1	FEED CAM, AIR FEED	248
	-	1	1	2119082-2	CAM, SNAIL, INSULATION ADJUSTMENT	244
	-	1	1	2079764-1	WASHER, WAVE SPRING, CREST-TO-CREST	243
	-	1	1	2119083-1	RETAINER, INSULATION DIAL	242
	-	2	2	7-18023-7	SCR, SKT HD CAP M3 X 4.0	241
	-	1	1	2844940-1	AIR FEED MODULE	238
	-	1	1	356885-4	STOP, SHEAR	237
	-	REF	REF	994970-2	COUNTER, MAGNETIC	164
	-	1	1	1-22281-8	SPRING, COMPRESSION	121
	-	1	1	455888-9	SPACER, CRIMPER	120
	-	1	1	1-18028-2	WASHER, FLAT, REG M4	119
	-	1	1	2844908-1	SCREW, LOCKING	99
	-	1	1	2844907-1	POST, LOCKING	98
	-	1	1	1-690438-0	FRONT STRIP GUIDE	96
	-	2	2	2168083-1	SCR, SKT HD CAP, RoHS, M3 X 8.0	95
	-	1	1	2168083-6	SCR, SKT HD CAP, RoHS, M5 X 65	93
	-	1	1	455888-4	SPACER, CRIMPER	82
	-	1	1	8-240641-1	SPACER	81
	-	2	2	1-2079383-8	SCR, BHSC, RoHS (M4 X 6)	79
	-	1	1	1803096-1	EXTENSION PLATE	78
	-	2	2	2168083-1	SCR, SKT HD CAP, RoHS, M3 X 8.0	77
	-	1	1	1633782-6	FENCE	76
	-	1	1	1803607-3	DOCUMENTATION PACKAGE	71
	-	1	1	2119791-5	DEPRESSOR, WIRE	70
	-	1	1	2119943-1	WASHER, SPACER	69
	-	1	1	2119740-1	TAG, IDENTIFICATION	67
	-	2	2	2168078-1	SCREW, DRIVE, RH, RoHS, 2 x .188	66
	-	2	2	2-18032-5	SCR, SET, FLT PNT, M5 X 20.0	61
	-	1	1	2168083-2	SCR, SKT HD CAP, RoHS, M4 X 8.0	60
	-	1	1	5-18022-5	SCR, HEX SKT HD CAP, M4 X 6.0	59
	-	1	1	985575-4	SCR, FLT SKT HD CAP M3 X 12.0	57
	-	1	1	1338685-1	PAWL, FEED	56
	-	4	4	2168083-3	SCR, SKT HD CAP, RoHS, M4 X 12.0	54
	-	2	2	1-2168083-5	SCR, SKT HD CAP, RoHS, M4 X 30	53
	-	1	1	18023-9	SCR, SKT HD CAP M4 X 6.0	49
	-	1	1	1803583-3	APPLICATOR BASIC ASSEMBLY, SF	46
	-	1	1	1803515-1	RAM ASSEMBLY, SF ATLANTIC	44
	-	1	1	1803602-1	SCR, BHSC, RoHS (M8 X 25)	41
	-	2	2	2079383-5	SCR, BHSC, RoHS (M4 X 20)	33
	-	2	2	1-2844962-7	SPACER, CYLINDRICAL, STRIP GUIDE	30
	-	1	1	1-2844938-7	PLATE, STRIP GUIDE	29
	-	1	1	455888-4	SPACER, CRIMPER	28
	-	2	2	22283-1	SPRING, COMPRESSION	27
	-	1	1	356835-1	LEVER, DRAG RELEASE	26
	-	1	1	240792-1	DRAG, TERMINAL	25
	-	1	1	1-1320928-5	STRIP GUIDE	24
	-	1	1	980371-4	SCR, SKT HD SHLDR 5.0 DIA X 6.0	23
	-	1	1	2168083-2	SCR, SKT HD CAP, RoHS, M4 X 8.0	21
	-	1	1	1-18028-2	WASHER, FLAT, REG M4	20
	-	1	1	2119533-1	STRIPPER, SIDE FEED	19
	-	1	1	690463-1	FLOATING SHEAR, REAR	17
	-	2	2	1-2168083-1	SCR, SKT HD CAP, RoHS, M3 X 6	16
	-	1	1	1-690464-6	SHEAR PLATE, REAR	15
	-	1	1	2119862-1	SHEAR HOLDER, REAR	14
	-	1	1	2119806-1	INSERT, SHEAR	13
	-	2	2	3-22280-3	SPRING, COMPRESSION	12
	-	1	1	1-356885-4	STOP, SHEAR	11
	-	1	1	2119805-2	SHEAR HOLDER, FRONT	10
	-	1	1	318059-4	FLOATING SHEAR, FRONT	9
	1	2	1	1633930-8	ANVIL, COMBINATION	8
	-	-	-	-	-	7
	-	1	1	1-690468-7	DEPRESSOR SHEAR, REAR	6
	-	1	1	2-2119781-2	DEPRESSOR, SHEAR	5
	-	1	1	238011-4	BLOCK, CRIMPER SPACER	4
	1	2	1	1803019-9	CRIMPER, INSULATION O	3
	-	1	1	455888-3	SPACER, CRIMPER	2
	1	2	1	4-1633730-2	CRIMPER, WIRE	1

DIMENSIONS:		TOLERANCES UNLESS OTHERWISE SPECIFIED:		DRAWING NO.		NAME	
mm	0 PLC ±	1 PLC ±	2 PLC ±	3 PLC ±	4 PLC ±	ANGLES ±	FINISH ±
MATERIAL				WEIGHT		SCALE	
-				-		1:2	
-				-		SHEET 1 OF 4	
-				-		REV F	

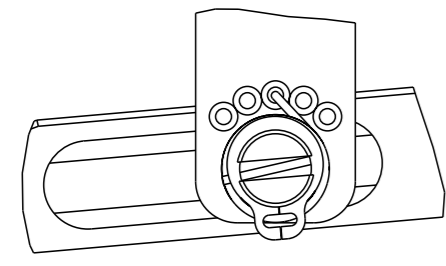
LOC		DIST		REVISIONS				
A		66		REV	DESCRIPTION	DATE	OWN	APVD
				-	SEE SHEET 1	-	-	-

### FEED TYPE PNEUMATIC



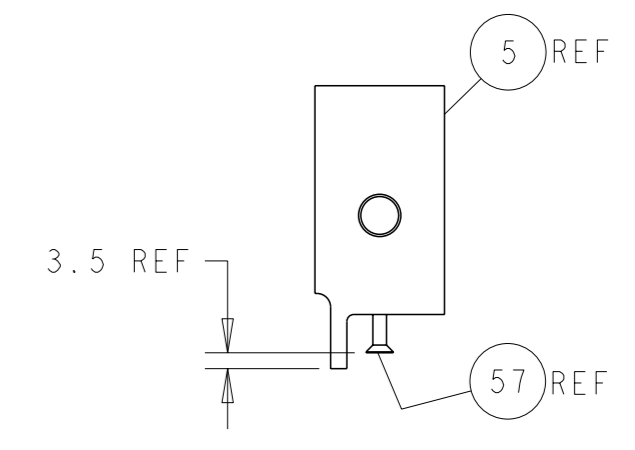
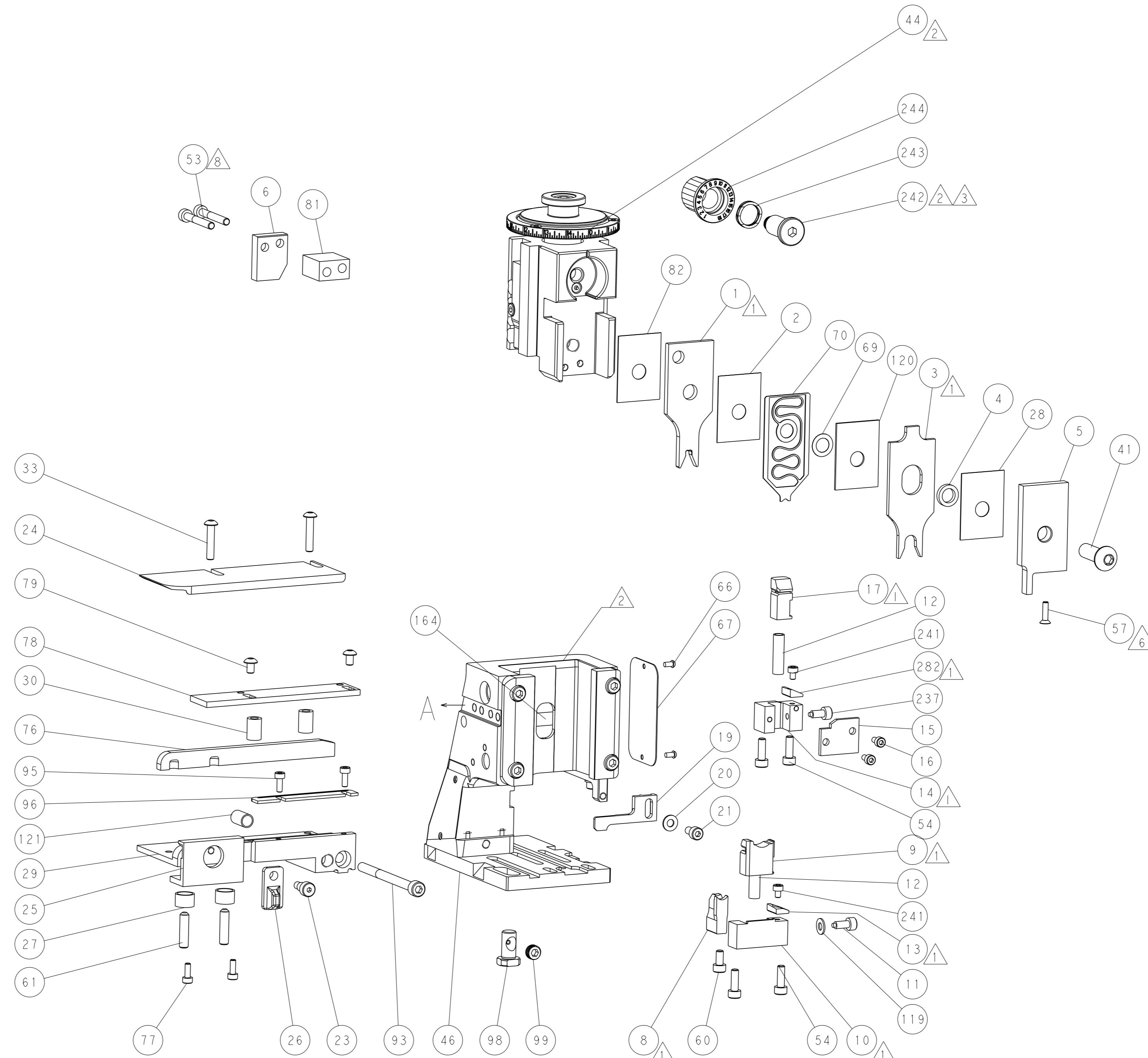
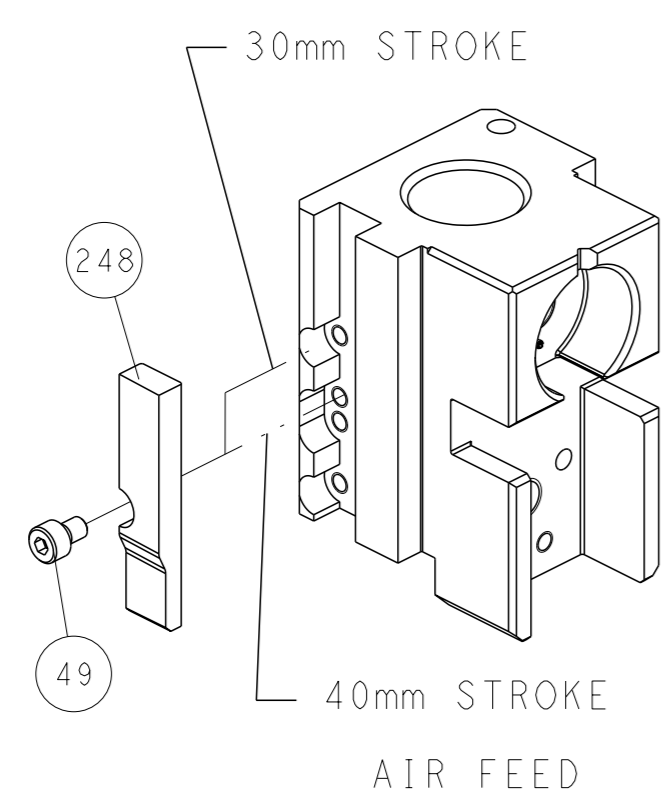
SEE DETAIL A

### FEED SPRING SETTING POSITION (SHOWN FROM REAR SIDE)

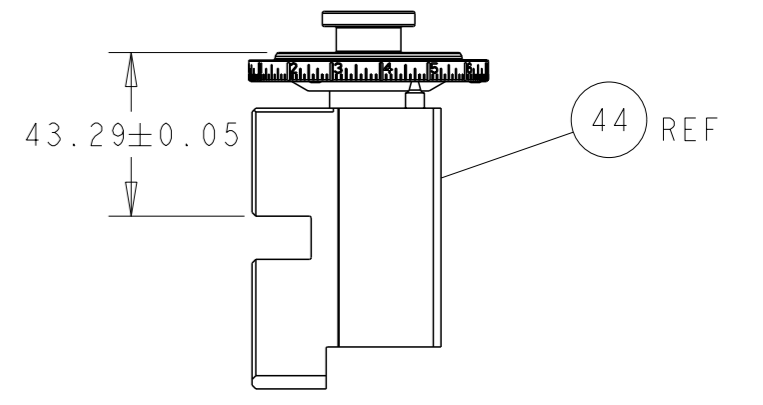


DETAIL A

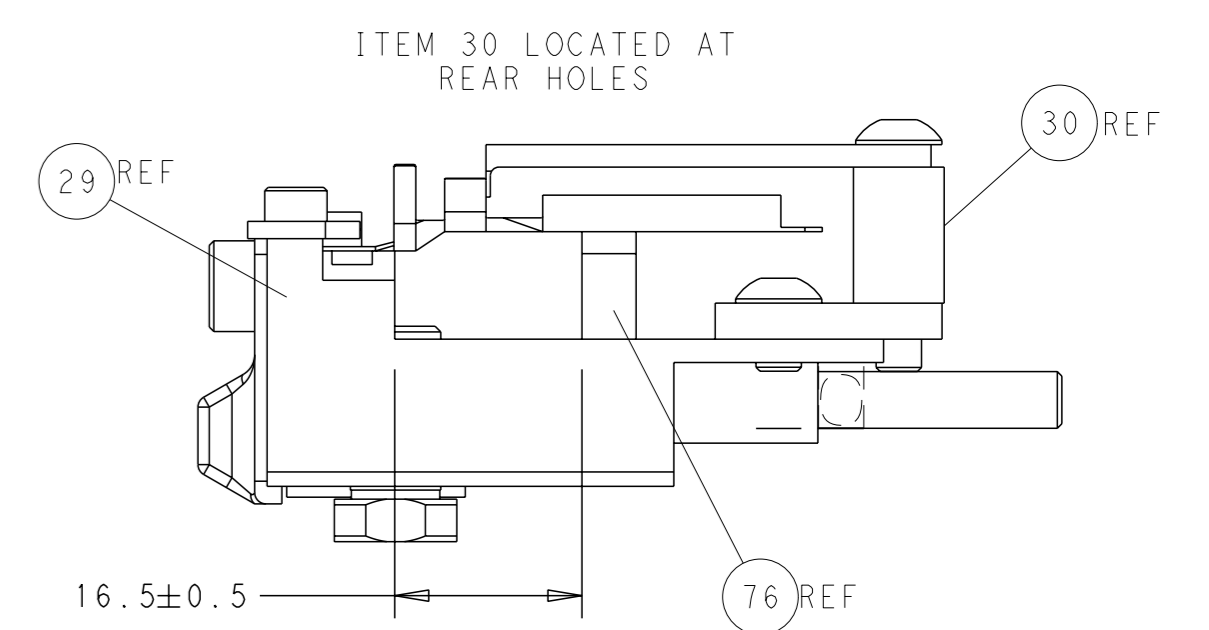
### CAM POSITION



SHEAR DEPRESSOR DETAIL



HOLDDOWN SET-UP



FEED TRACK POSITION GUIDE BY WIRE BARREL

**ATLANTIC VERSION**  
 Shown on sheets 1 of 4 & 2 of 4  
 (Pacific version shown on sheets 3 of 4 & 4 of 4)

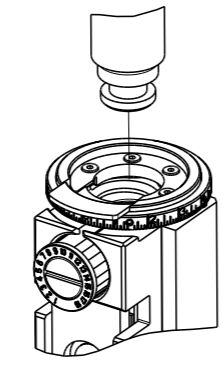
DIMENSIONS: mm 		TOLERANCES UNLESS OTHERWISE SPECIFIED: 0 PLC ± 1 PLC ± 2 PLC ± 3 PLC ± 4 PLC ± ANGLES FINISH ±		OWN: R. KNEPPER 30 JUL 2012 CHK: G. BAILEY 30 JUL 2012 APVD: M. CLIFFORD 30 JUL 2012 PRODUCT SPEC APPLICATION SPEC WEIGHT: - SCALE: 1:2		NAME: Ocean Side Feed Applicator SIZE: A1 CAGE CODE: 00779 DRAWING NO: 2151711 SHEET: 2 of 4 REV: F		RESTRICTED TO: - SCALE: 1:2 SHEET: 2 of 4 REV: F	
-----------------------	--	--	--	---	--	--	--	---	--

8 7 6 5 4 3 2 1

THIS DRAWING IS UNPUBLISHED. RELEASED FOR PUBLICATION 20  
 COPYRIGHT 20 BY TYCO ELECTRONICS CORPORATION. ALL RIGHTS RESERVED.

PART NUMBER	REVISION	DESCRIPTION	FEED TYPE
2-2151711-2	F	FINE CRIMP HEIGHT ADJUST	PNEUMATIC
7-2151711-7	A	CRIMP TOOLING KIT	-

PACIFIC VERSION TERMINATOR  
 INTERFACE ADAPTER



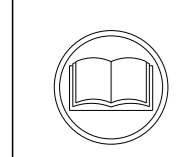
APPLICATOR DATA		
CRIMP	SIZE	TYPE
WIRE	3.63 mm [ .143 ]	F
INSUL	7.20 mm [ .283 ]	O
APPLICATOR INSTRUCTIONS 408-35042		

TERMINAL DATA: DELPHI PACKARD TERMINAL & CRIMP SPECIFICATION  
 TERMINAL NAME: MALE METRI-PACK 480

WIRE STRIP LENGTH	INSULATION DIAMETER RANGE
5.20-6.00 mm [ .205-.236 IN ]	Ø3.49-5.24 mm [ .137-.206 IN ]
TERMINAL APPLICATION SPECIFICATION	DELPHI PACKARD

TE TERMINAL	DELPHI PACKARD TERMINAL	TE SEAL	DELPHI PACKARD SEAL
1572019-1	12052172	1572026-1	15324989

WIRE SIZE	CRIMP HEIGHT mm [ INCH ]	CRIMP HEIGHT REFERENCE SETTING
5.00mm2	2.25+/-0.05 [ .089+/- .002 ]	8.5



- △ RECOMMENDED SPARE PARTS
- △ REFER TO SUPPLIED INSTRUCTION SHEET FOR CLEANING, LUBRICATION AND STORAGE OF APPLICATOR.
- △ APPLY PART NUMBER 2-23419-6 LOCTITE TO THREADS OF ITEM 242.
- △ CRIMP HEIGHT REFERENCE SETTING WAS THE SETTING USED WHEN THE APPLICATOR WAS QUALIFIED AT THE FACTORY. ADJUSTMENT MAY BE NECESSARY WHEN RUNNING APPLICATOR IN THE FIELD.
- △ TERMINAL PITCH IS NOT COMPATIBLE WITH MECHANICAL FEED.
- △ APPLY TORQ-SEAL IN ALLEN SOCKET TO FILL HOLE AFTER FLAT HD HAS BEEN ADJUSTED TO CORRECT HEIGHT AT QUALIFICATION. APPLY #1-23419-5 LOC-TITE TO THREADS.
- 7. UNLESS SPECIFIED OTHERWISE TORQUE VALUES SHALL BE USED PER DOCUMENT, 101-35000.
- △ CUT TO LENGTH AT ASSEMBLY

**\*WARNING**  
 ON INSTALLATION, SET WIRE DISC TO CRIMP HEIGHT REFERENCE SETTING FOR LARGEST WIRE SIZE. CRIMP HEIGHT REFERENCE SETTINGS GREATER THAN THE VALUE SHOWN MAY CAUSE DAMAGE TO THE CRIMP TOOLING, REFER TO THE INSTRUCTION SHEET FOR PROPER SETUP AND ADJUSTMENTS.

LOC	DIST	REVISIONS					
A	66	P	LYR	DESCRIPTION	DATE	OWN	APVD
-	-	-	-	SEE SHEET 1	-	-	-

1	-	1	2280441-1	INSERT, SHEAR	282
	-	1	2119082-2	CAM, SNAIL, INSULATION ADJUSTMENT	244
	-	1	2079764-1	WASHER, WAVE SPRING, CREST-TO-CREST	243
3	-	1	2119083-1	RETAINER, INSULATION DIAL	242
	-	2	7-18023-7	SCR, SKT HD CAP M3 X 4.0	241
	-	1	2844940-1	AIR FEED MODULE	238
	-	1	356885-4	STOP, SHEAR	237
	REF		994970-2	COUNTER, MAGNETIC	164
	-	1	2119641-2	FEED CAM, AIR FEED	151
	-	1	2168083-8	SCR, SKT HD CAP, RoHS, M4 X 16	144
	-	4	2168083-9	SCR, SKT HD CAP, RoHS, M4 X 20	143
	-	1	1803583-4	APPLICATOR BASIC ASSEMBLY, SF	141
	-	1	1803516-1	RAM ASSEMBLY, SF PACIFIC	140
	-	1	1-22281-8	SPRING, COMPRESSION	121
	-	1	455888-9	SPACER, CRIMPER	120
	-	1	1-18028-2	WASHER, FLAT, REG M4	119
	-	1	2844908-1	SCREW, LOCKING	99
	-	1	2844907-1	POST, LOCKING	98
	-	1	1-690438-0	FRONT STRIP GUIDE	96
	-	2	2168083-1	SCR, SKT HD CAP, RoHS, M3 X 8.0	95
	-	1	2168083-6	SCR, SKT HD CAP, RoHS, M5 X 65	93
	-	1	455888-4	SPACER, CRIMPER	82
	-	1	8-240641-1	SPACER	81
	-	2	1-2079383-8	SCR, BHSC, RoHS (M4 X 6)	79
	-	1	1803096-1	EXTENSION PLATE	78
	-	2	2168083-1	SCR, SKT HD CAP, RoHS, M3 X 8.0	77
	-	1	1633782-6	FENCE	76
	-	1	1803607-3	DOCUMENTATION PACKAGE	71
	-	1	2119791-5	DEPRESSOR, WIRE	70
	-	1	2119943-1	WASHER, SPACER	69
	-	1	2119740-1	TAG, IDENTIFICATION	67
	-	2	2168078-1	SCREW, DRIVE, RH, RoHS, 2 x .188	66
	-	2	2-18032-5	SCR, SET, FLT PNT, M5 X 20.0	61
	-	1	5-18022-5	SCR, HEX HD CAP, M4 X 6.0	59
6	-	1	985575-4	SCR, FLT SKT HD CAP M3 X 12.0	57
	-	1	1338685-1	PAWL, FEED	56
8	-	2	1-2168083-5	SCR, SKT HD CAP, RoHS, M4 X 30	53
	-	1	18023-9	SCR, SKT HD CAP M4 X 6.0	49
	-	1	1803602-1	SCR, BHSC, RoHS (M8 X 25)	41
	-	2	2079383-5	SCR, BHSC, RoHS (M4 X 20)	33
	-	2	1-2844962-7	SPACER, CYLINDRICAL, STRIP GUIDE	30
	-	1	1-2844938-7	PLATE, STRIP GUIDE	29
	-	1	455888-4	SPACER, CRIMPER	28
	-	2	22283-1	SPRING, COMPRESSION	27
	-	1	356835-1	LEVER, DRAG RELEASE	26
	-	1	240792-1	DRAG, TERMINAL	25
	-	1	1-1320928-5	STRIP GUIDE	24
	-	1	980371-4	SCR, SKT HD SHLDR 5.0 DIA X 6.0	23
	-	1	2168083-2	SCR, SKT HD CAP, RoHS, M4 X 8.0	21
	-	1	1-18028-2	WASHER, FLAT, REG M4	20
	-	1	2119533-1	STRIPPER, SIDE FEED	19
1	-	1	690463-1	FLOATING SHEAR, REAR	17
	-	2	1-2168083-1	SCR, SKT HD CAP, RoHS, M3 X 6	16
	-	1	1-690464-6	SHEAR PLATE, REAR	15
1	-	1	2119862-1	SHEAR HOLDER, REAR	14
1	-	1	2119806-1	INSERT, SHEAR	13
	-	2	3-22280-3	SPRING, COMPRESSION	12
	-	1	1-356885-4	STOP, SHEAR	11
1	-	1	2119805-2	SHEAR HOLDER, FRONT	10
1	-	1	318059-4	FLOATING SHEAR, FRONT	9
1	1	1	1633930-8	ANVIL, COMBINATION	8
	-	-	-	-	7
	-	1	1-690468-7	DEPRESSOR SHEAR, REAR	6
	-	1	2-2119781-2	DEPRESSOR, SHEAR	5
	-	1	238011-4	BLOCK, CRIMPER SPACER	4
1	1	1	1803019-9	CRIMPER, INSULATION O	3
	-	1	455888-3	SPACER, CRIMPER	2
1	1	1	4-1633730-2	CRIMPER, WIRE	1

THE DRAWING IS UNPUBLISHED. ALL RIGHTS RESERVED. THIS DRAWING IS UNPUBLISHED. ALL RIGHTS RESERVED. THIS DRAWING IS UNPUBLISHED. ALL RIGHTS RESERVED.				OWN: R. KNPPER 30 JUL 2012 CHK: G. BAILEY 30 JUL 2012 APVD: M. CLIFFORD 30 JUL 2012	NAME: STE TE Connectivity Harrisburg, PA 17105-3608
DIMENSIONS: mm	TOLERANCES UNLESS OTHERWISE SPECIFIED:	SIZE: A1	CAGE CODE: 00779	DRAWING NO: 2151711	RESTRICTED TO: -
		APPLICATOR SPEC: -	SCALE: 1:2	SHEET: 3 of 4	REV: F
MATERIAL: -	FINISH: -	WEIGHT: -	Customer Accessible Production Drawing		

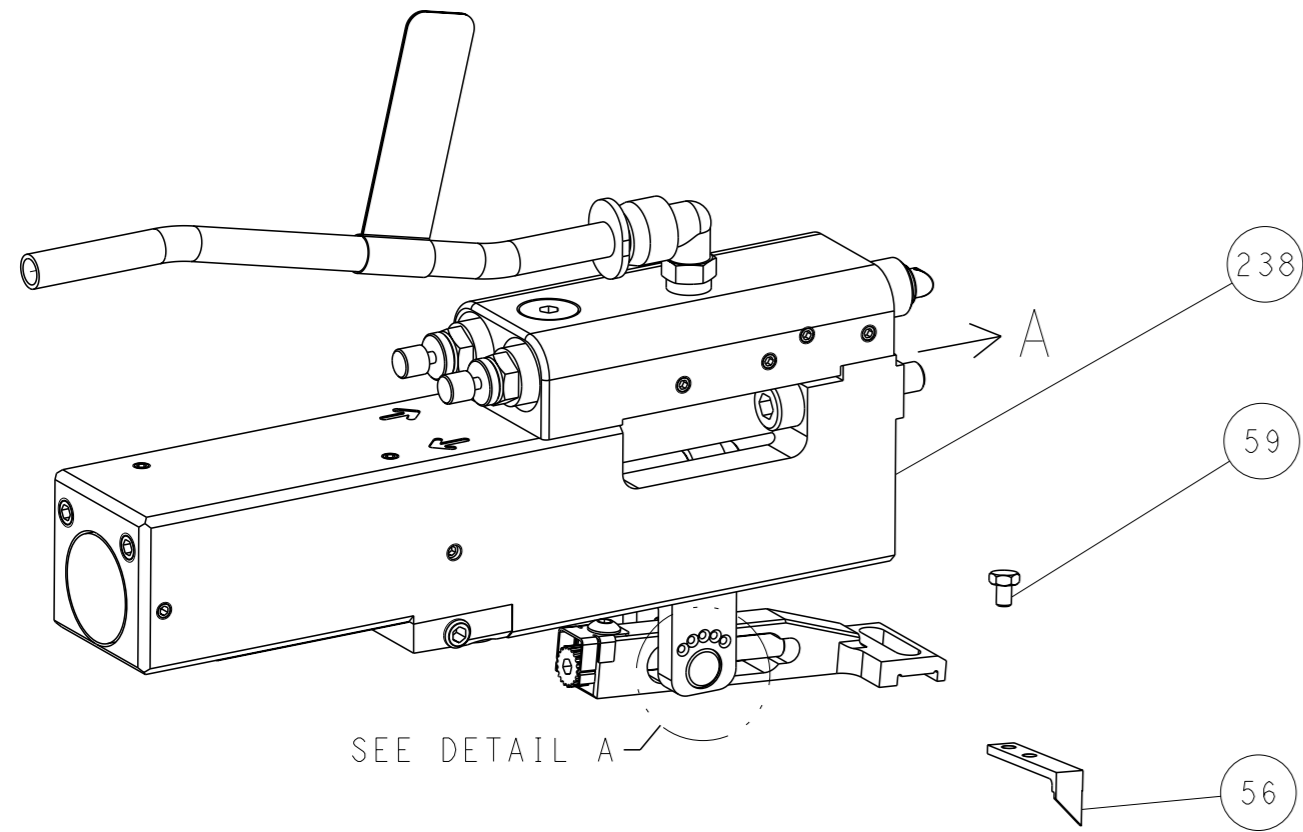
PACIFIC VERSION  
 Shown on sheets 3 of 4 & 4 of 4  
 (Atlantic version shown on sheets 1 of 4 & 2 of 4)

AMP 4805 REV 31MAR2000

SHEETS 1 & 2 ARE NOT REQUIRED FOR PACIFIC VERSION

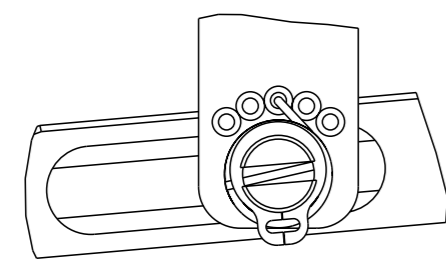
LOC	DIST	REVISIONS					
A	66	P	LYR	DESCRIPTION	DATE	OWN	APVD
		-		SEE SHEET 1	-	-	-

### FEED TYPE PNEUMATIC



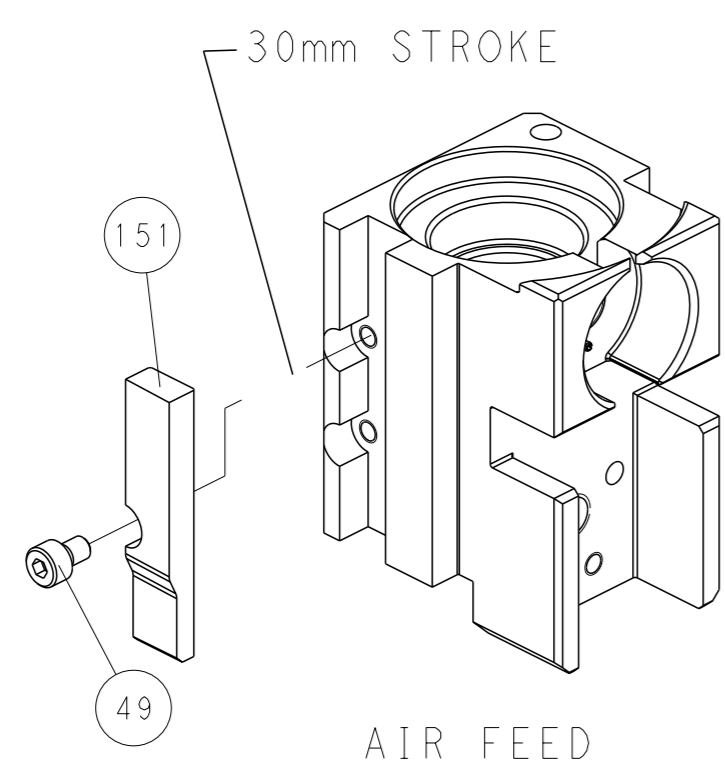
SEE DETAIL A

### FEED SPRING SETTING POSITION (SHOWN FROM REAR SIDE)

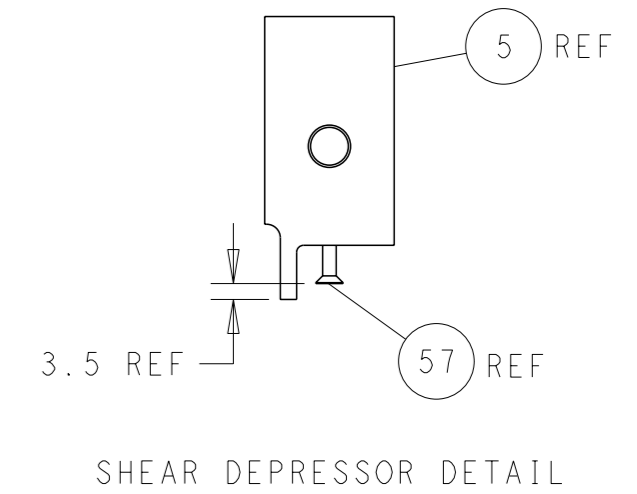
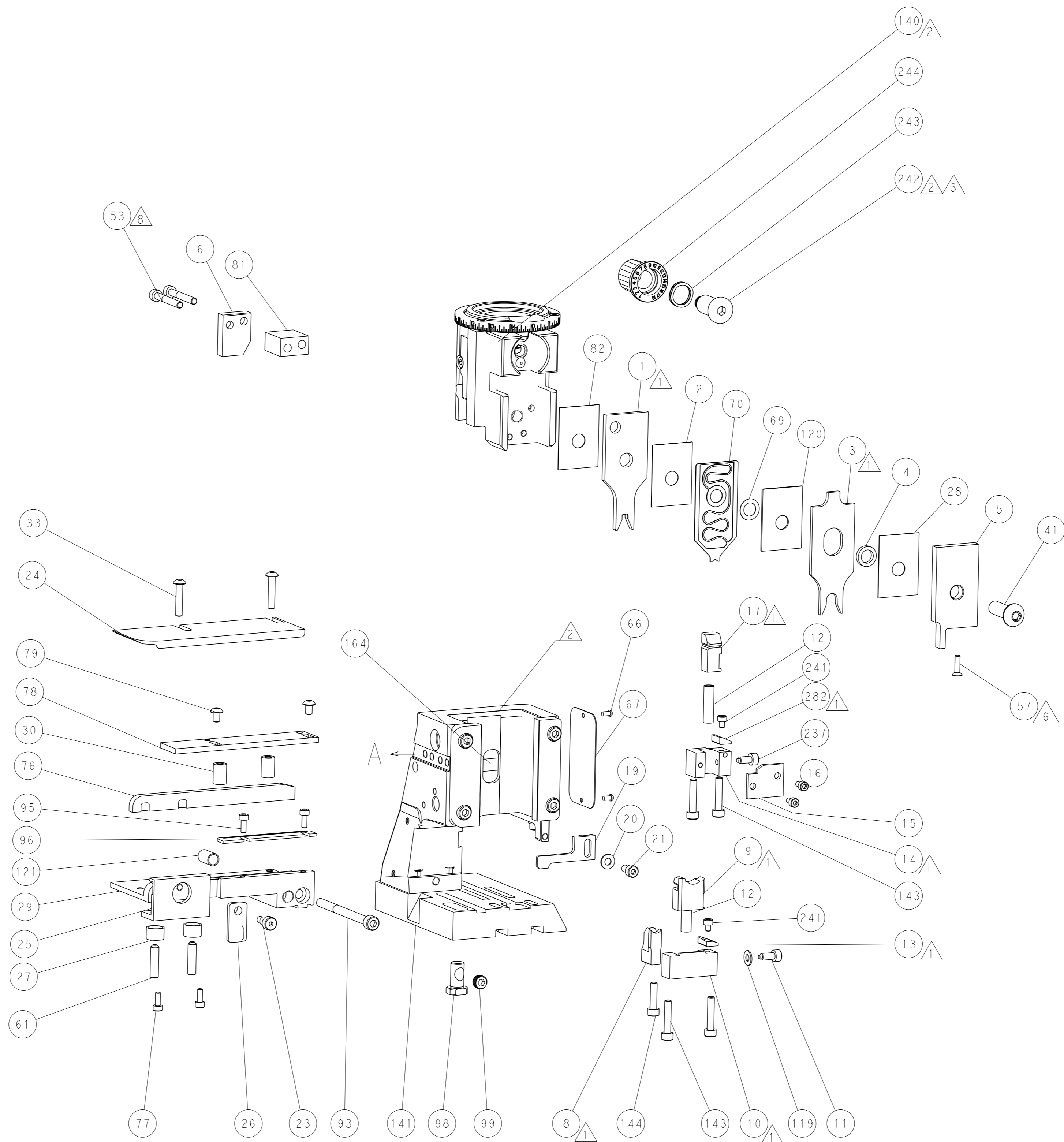


DETAIL A

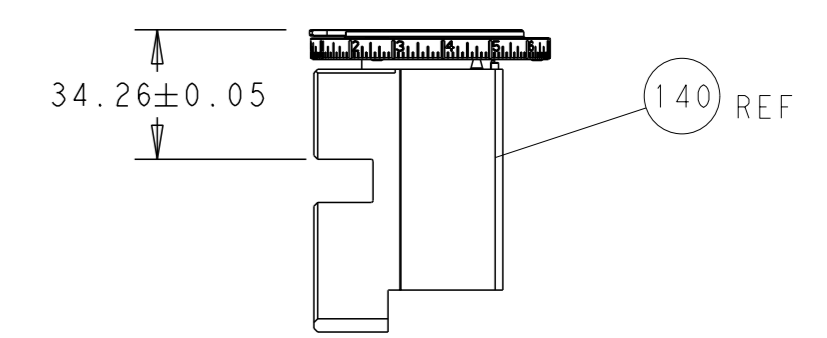
### CAM POSITION



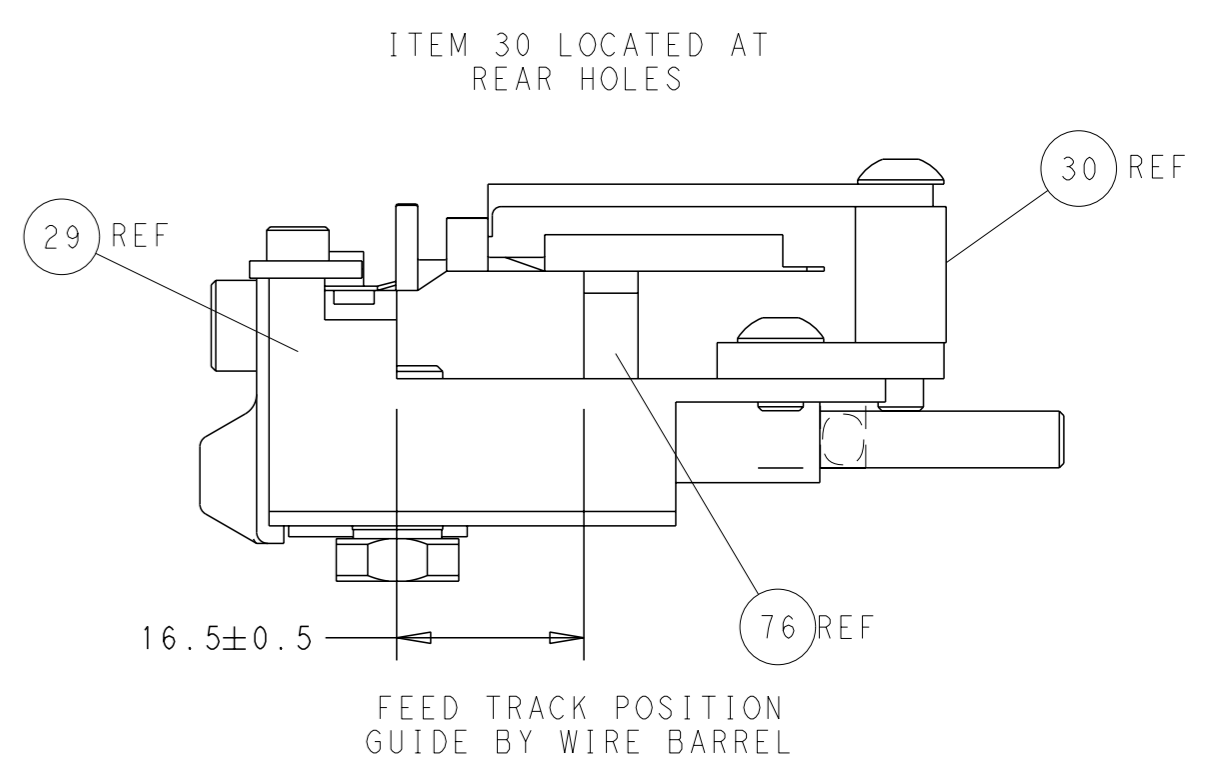
AIR FEED



SHEAR DEPRESSOR DETAIL



HOLDDOWN SET-UP



FEED TRACK POSITION GUIDE BY WIRE BARREL

**PACIFIC VERSION**  
 Shown on sheets 3 of 4 & 4 of 4  
 (Atlantic version shown on sheets 1 of 4 & 2 of 4)

<small>THIS DRAWING IS A CONTROLLED DOCUMENT FOR TYCO ELECTRONICS CORPORATION. IT IS SUBJECT TO CHANGE AND THE CONTROLLING ENGINEERING ORGANIZATION SHOULD BE CONTACTED FOR THE LATEST REVISION.</small>		OWN: R. KNEPPER 30 JUL 2012 CHK: G. BAILEY 30 JUL 2012 APVD: M. CLIFFORD 30 JUL 2012	NAME: TE Connectivity Harrisburg, PA 17105-3608
DIMENSIONS: mm TOLERANCES UNLESS OTHERWISE SPECIFIED: 0 PLC ± 1 PLC ± 2 PLC ± 3 PLC ± 4 PLC ± ANGLES FINISH ±	APPLICATION SPEC: - WEIGHT: - SCALE: 1:2	PRODUCT SPEC: - RESTRICTED TO: -	SIZE: A1 CAGE CODE: 00779 DRAWING NO: C=2151711 SHEET: 4 of 4 REV: F
Customer Accessible Production Drawing			