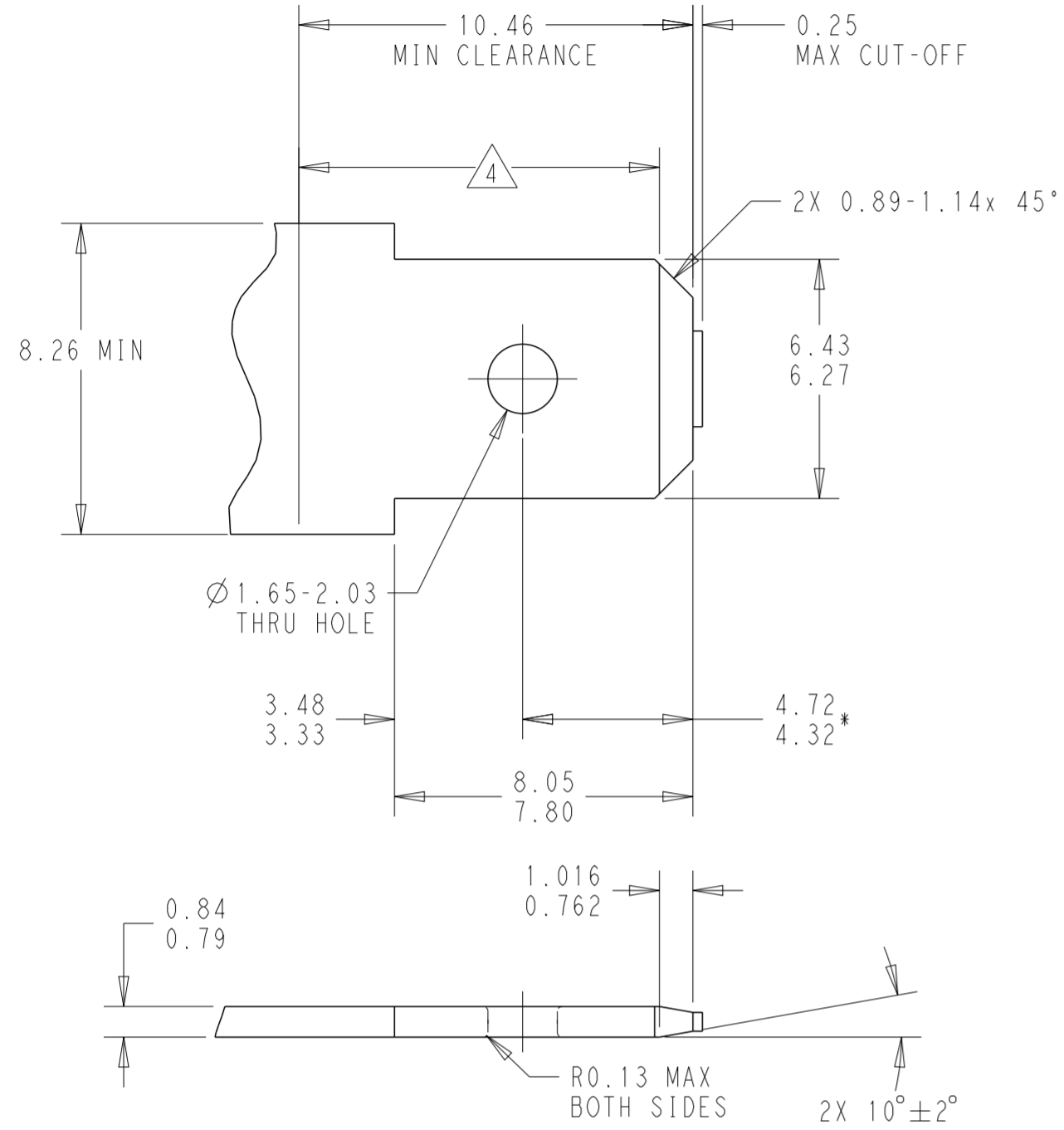
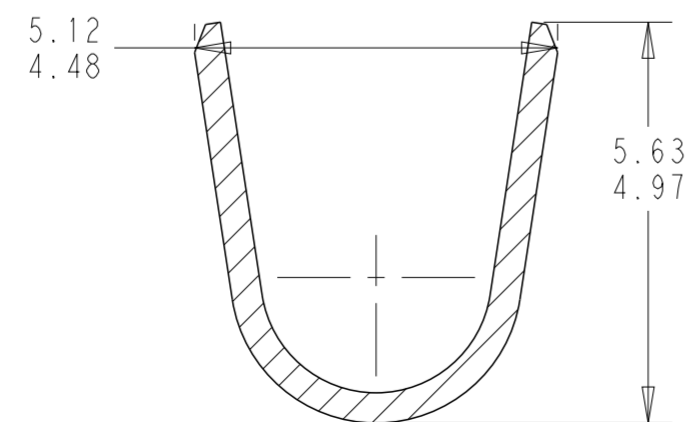


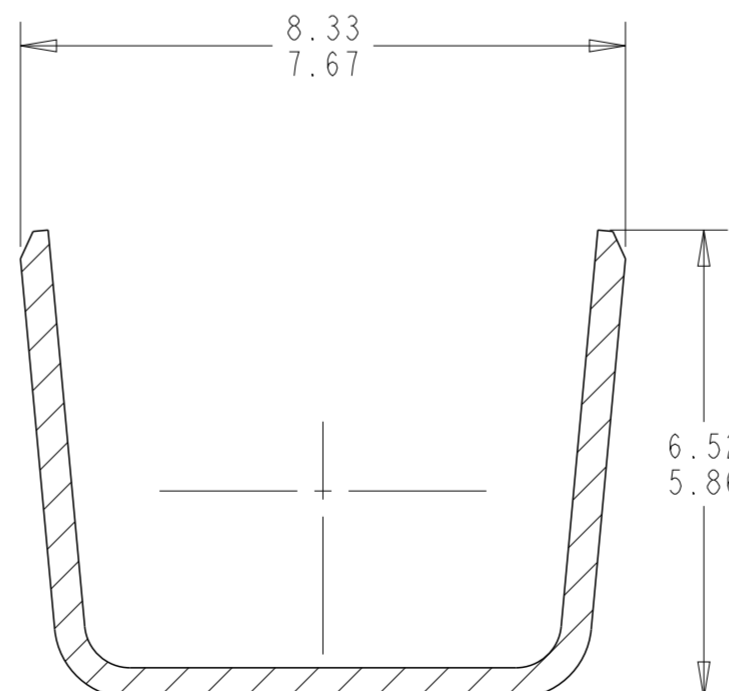
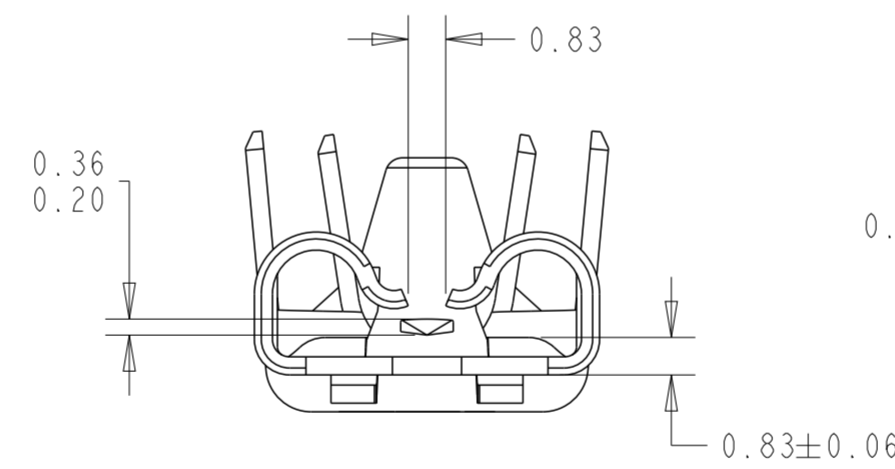
SUGGESTED MATING TAB



1. MATERIAL: 1/2 HARD BRASS OR NICKEL PLATED STEEL
 2. NO BURRS PERMISSIBLE AROUND HOLE
 3. TIN PLATING IS REQUIRED ON BRASS WHEN TERMINAL TEMPERATURE IS OVER 225°F
 4. MUST BE FLAT WITHIN 0.08 OVER THIS LENGTH
 5. HOLE MUST BE SYMMETRICAL ABOUT TAB ϕ WITHIN 0.08.
- * TO BE USED ONLY WHEN SHOULDER IS ELIMINATED.



SECTION N-N
SCALE 10:1

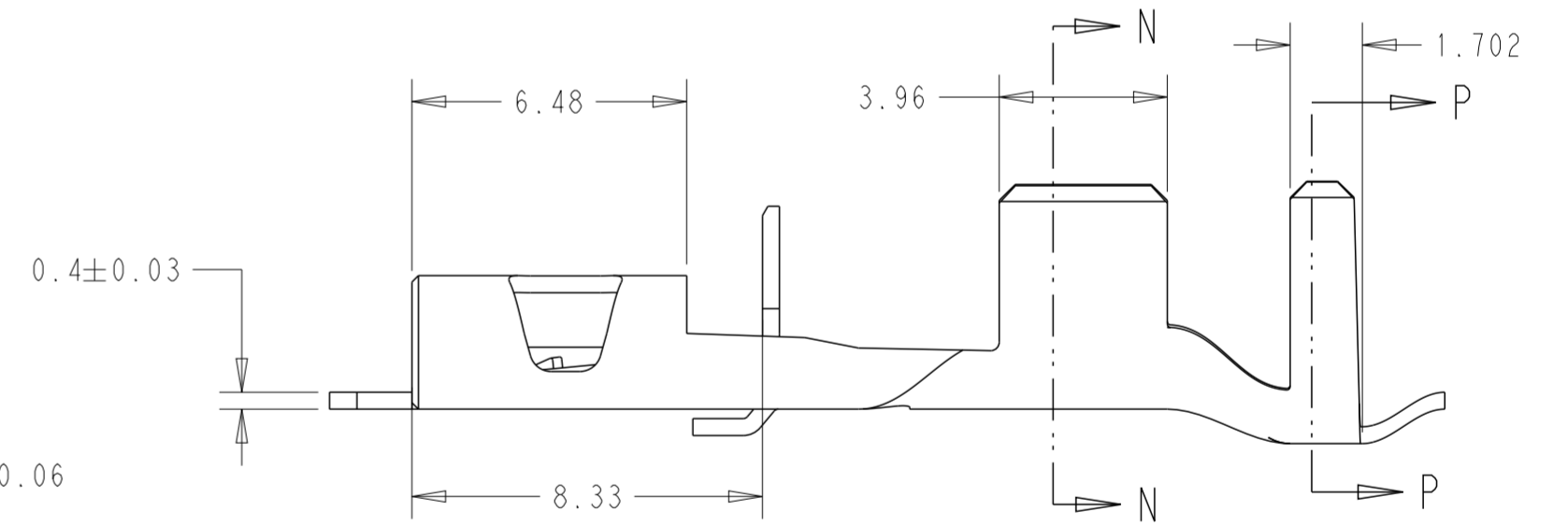
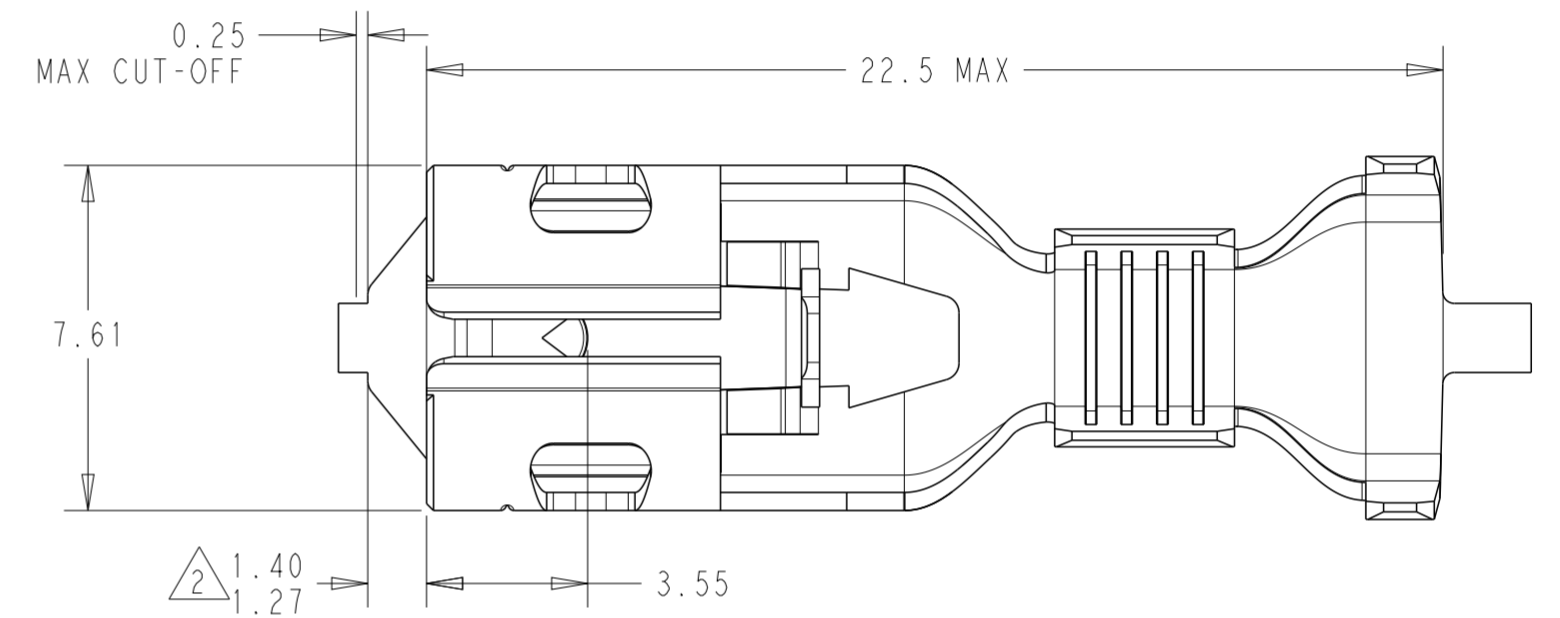


SECTION P-P
SCALE 10:1

REVISIONS

P	LTR	DESCRIPTION	DATE	DWN	APVD
4		NOTE 3 UPDATED	10NOV2020	BKW	KR
A		REVISED PER ECN-21-112112	09AUG2021	BDA	KR
A1		REVISED PER ECN-22-173509	07SEP2022	TDB	KR
B		REVISED PER ECN-23-193388	12JAN2023	TDB	KR

1. CONTINUOUS STRIP ON REELS, BREAKS MAY BE PRESENT
2. THIS DIMENSION MUST BE MAINTAINED FOR PROPER FUNCTION OF THE LATCHING MECHANISM.
3. WIRE RANGE:
 (2) 14 AWG STRANDED / (2) 3.50 INSULATION DIAMETER DOUBLE WIRE
 (1) 16 AWG + (1) 14 AWG STRANDED / (1) 3.11 + (1) 3.50 INSULATION DIAMETER DOUBLE WIRE
 (1) 18 AWG + (1) 14 AWG STRANDED / (1) 2.80 + (1) 3.50 INSULATION DIAMETER DOUBLE WIRE
4. THIS TERMINAL MUST BE USED WITH A TIN PLATED TAB



UNPLATED 4	BRASS	2238285-1
FINISH	MATERIAL	PART NUMBER

THIS DRAWING IS A CONTROLLED DOCUMENT.

DIMENSIONS:	TOLERANCES UNLESS OTHERWISE SPECIFIED:	DWN	05 JUN 2020
mm	0 PLC ±	B. WEAVER	05 JUN 2020
	1 PLC ±	CHK	K. RANDOLPH
	2 PLC ±0.25	APVD	W. MOYER
	3 PLC ±	PRODUCT SPEC	
	4 PLC ±	APPLICATION SPEC	114-2074
	ANGLES ±	WEIGHT	-
	FINISH	CUSTOMER DRAWING	

NAME: RECEPTACLE, POSITIVE-LOCK 250 SERIES

SIZE	CAGE CODE	DRAWING NO	RESTRICTED TO
A2	00779	C-2238285	-

SCALE 6:1 SHEET 1 OF 1 REV B