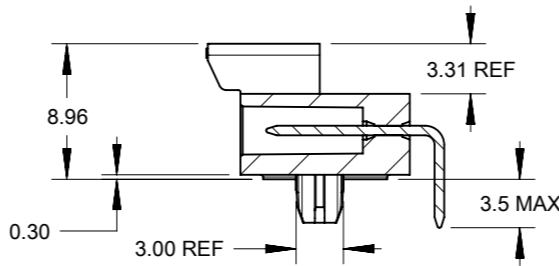
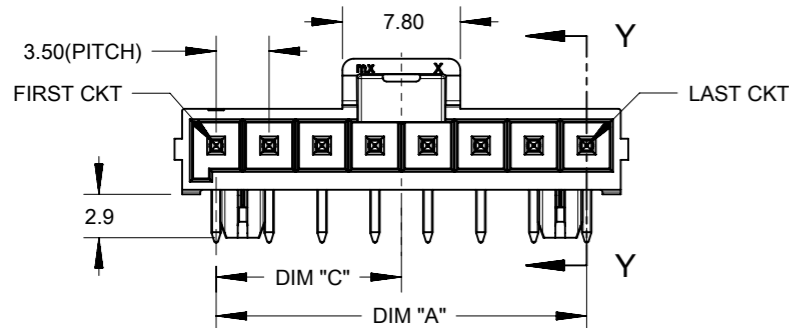
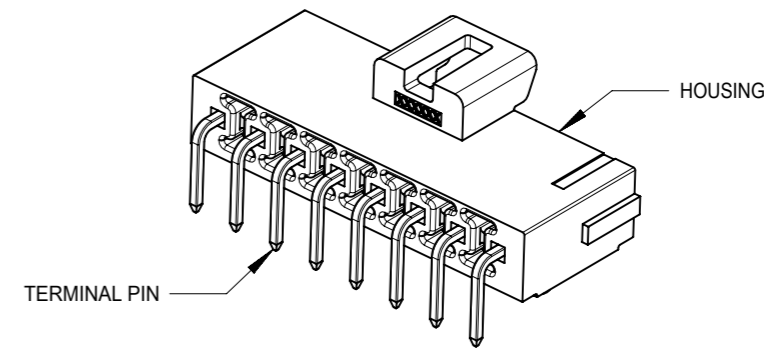
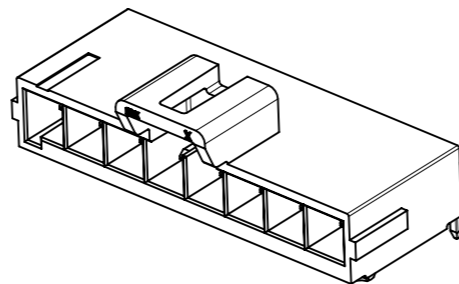
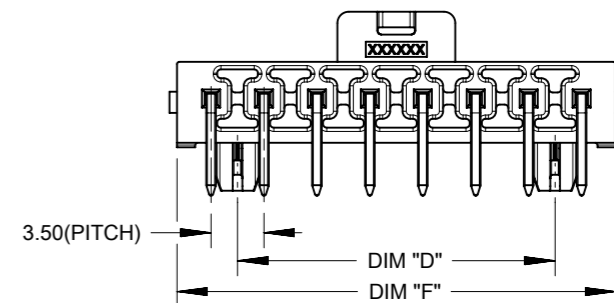


FIRST CIRCUIT MARK
(NOT SHOWING ON 2
AND 3 CIRCUITS SERIES)

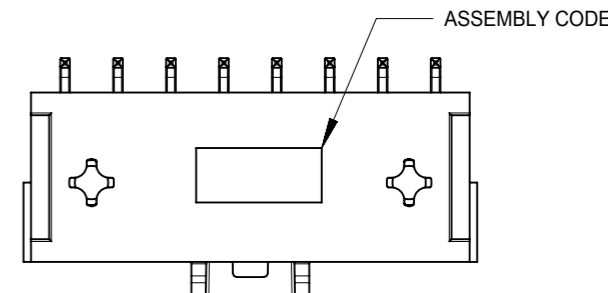
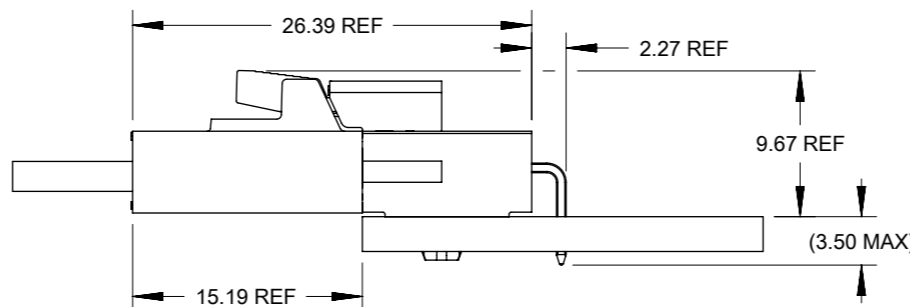


SECTION Y-Y



NOTES:

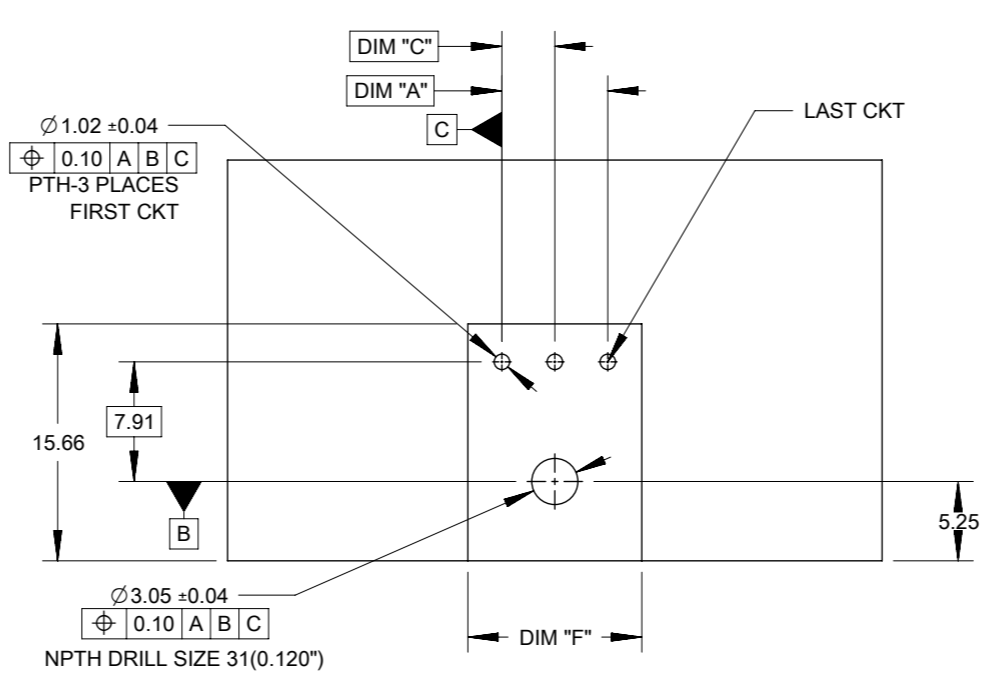
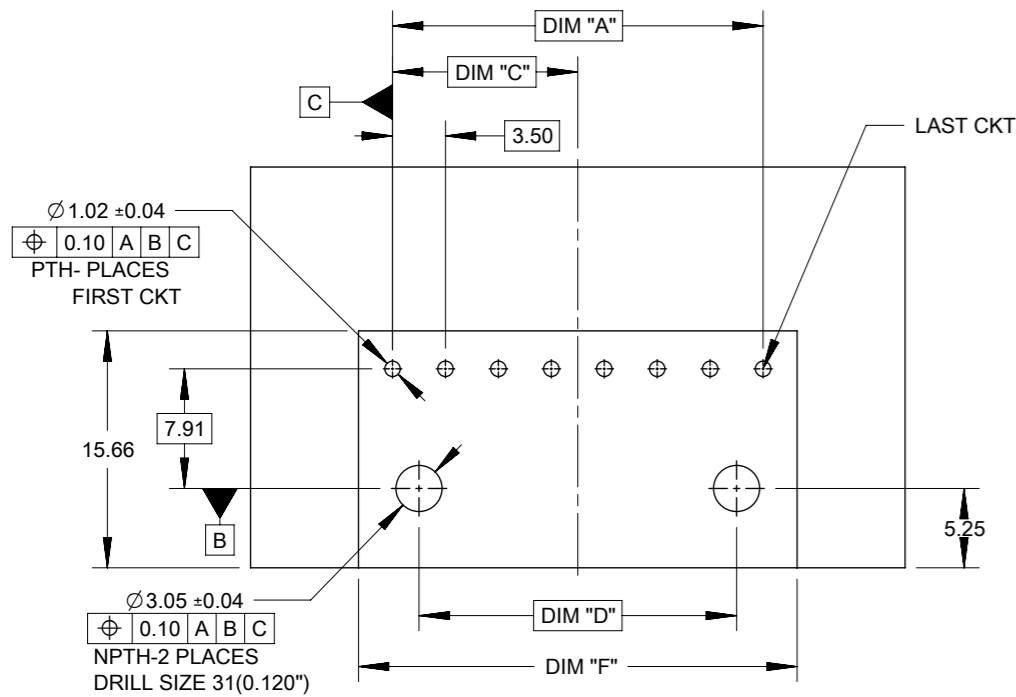
- MATERIAL :
HOUSING
OPTION 1: LCP BLACK, UL94 V-0
OPTION 2: LCP NATURAL, UL94 V-0
TERMINAL: COPPER ALLOY
- PLATING FINISH:
OPTION 1 - 1.5µm(60µin)-2.5µm(100µin) TIN OVER
1.25µm(50µin)-2.5µm(100µin) NICKEL OVERALL
OPTION 2 - 0.35µm(15µin) GOLD CONTACT AREA,
1.5µm(60µin)-2.5µm(100µin) TIN TAIL AREA OVER
1.25µm(50µin)-2.5µm(100µin) NICKEL OVERALL
OPTION 3 - 0.70µm(30µin) GOLD CONTACT AREA,
1.5µm(60µin)-2.5µm(100µin) TIN TAIL AREA OVER
1.25µm(50µin)-2.5µm(100µin) NICKEL OVERALL
- PARTS TO BE PACKAGED PER PK-172310-9001
- PRODUCT SPECIFICATION PS-172323-0001
- PART MATES WITH MOLEX RECEPTACLE HOUSING
172256 AND 172260
- PART CONFORMS TO CLASS "C" REQUIREMENTS OF SPECIFICATION
PS-45499-002 WITH 0.13 MM MAXIMUM FLASH ALLOWED IN CORE
HOLES AND FRONT SURFACE.
- DISCOLORATION IN THE BANDOLIER AREA OF THE PIN IS
INHERENT TO THE PLATING PROCESS AND IS DUE TO THE MASKING
EFFECT OF THE CARRIER. THIS DISCOLORATION IS IN A NON-FUNCTIONAL
AREA OF THE PIN AND WILL NOT AFFECT THE PERFORMANCE OF THE
HEADER ASSEMBLY.
- ASSEMBLY SPECIFICATION: AS-172323-0001



FUNCTIONAL SYMBOLS	THIS DRAWING CONTAINS INFORMATION THAT IS PROPRIETARY TO MOLEX ELECTRONIC TECHNOLOGIES, LLC AND SHOULD NOT BE USED WITHOUT WRITTEN PERMISSION		CURRENT REV DESC:		molex					
	0	mm								
DIVISIONAL SYMBOLS	GENERAL TOLERANCES (UNLESS SPECIFIED)		EC NO: 693449		ULTRA-FIT R/A HEADER 2-8 CKTS SINGLE ROW					
	0	0	4 PLACES ±	DRWN: GLLI				2022/01/19		
DIVISIONAL SYMBOLS	0	0	ANGULAR TOL ± °		PRODUCT CUSTOMER DRAWING					
	3 PLACES ±	0.25	INITIAL REVISION:					DOCUMENT NUMBER	DOC TYPE	DOC PART
	2 PLACES ±	0.25	3 PLACES ±		DRWN: DROSCA	2014/03/05	SD-172310-1000	PSD	000	C3
	1 PLACE ±	0.5	2 PLACES ±		APPR: XQZHANG	2022/01/26				
0 PLACES ±		1 PLACE ±		APPR: JCOMERCI	2014/04/24					
DRAFT WHERE APPLICABLE MUST REMAIN WITHIN DIMENSIONS		THIRD ANGLE PROJECTION		DRAWING	SERIES	MATERIAL NUMBER	CUSTOMER		SHEET NUMBER	
		A3-SIZE		172310	GENERAL MARKET		1 OF 3			

10 9 8 7 6 5 4 3 2 1

F



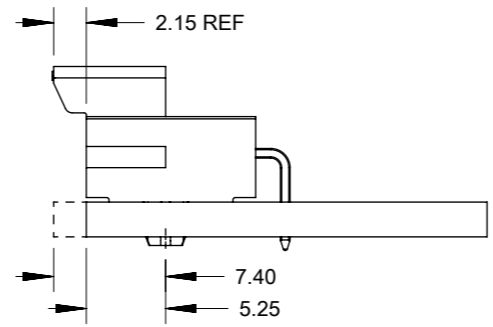
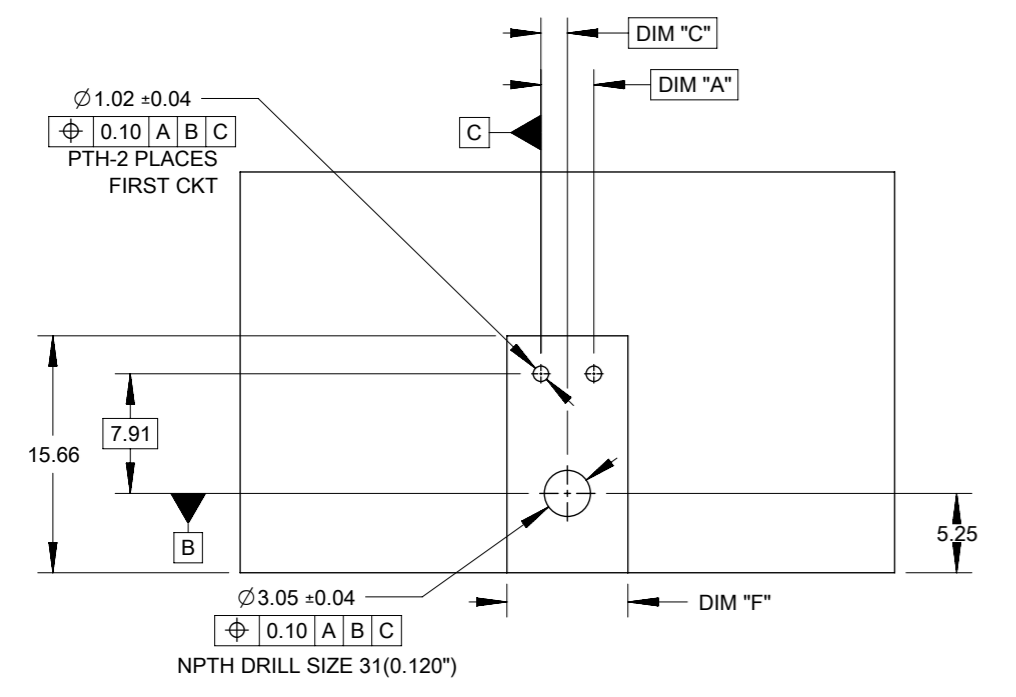
E

D

C

B

A



OPTION 1: LATCH FLUSH WITH PCB EDGE
OPTION 2: HOUSING BODY FLUSH WITH PCB EDGE

TIN PLATING							
PART NO.	COLOR	CIRCUIT SIZE	KEY OPTION	DIM A	DIM F	DIM C	DIM D
172310-1102	BLACK	2	KEY A	3.50	8.00	1.75	0.00
172310-1103	BLACK	3	KEY A	7.00	11.50	3.50	0.00
172310-1104	BLACK	4	KEY A	10.50	15.00	5.25	7.00
172310-1105	BLACK	5	KEY A	14.00	18.50	7.00	10.50
172310-1106	BLACK	6	KEY A	17.50	22.00	8.75	14.00
172310-1107	BLACK	7	KEY A	21.00	25.50	10.50	17.50
172310-1108	BLACK	8	KEY A	24.50	29.00	12.25	21.00
172310-2102	NATURAL	2	KEY B	3.50	8.00	1.75	0.00
172310-2103	NATURAL	3	KEY B	7.00	11.50	3.50	0.00
172310-2104	NATURAL	4	KEY B	10.50	15.00	5.25	7.00
172310-2105	NATURAL	5	KEY B	14.00	18.50	7.00	10.50
172310-2106	NATURAL	6	KEY B	17.50	22.00	8.75	14.00
172310-2107	NATURAL	7	KEY B	21.00	25.50	10.50	17.50
172310-2108	NATURAL	8	KEY B	24.50	29.00	12.25	21.00

15 MICROINCH GOLD PLATING							
PART NO.	COLOR	CIRCUIT SIZE	KEY OPTION	DIM A	DIM F	DIM C	DIM D
172310-1202	BLACK	2	KEY A	3.50	8.00	1.75	0.00
172310-1203	BLACK	3	KEY A	7.00	11.50	3.50	0.00
172310-1204	BLACK	4	KEY A	10.50	15.00	5.25	7.00
172310-1205	BLACK	5	KEY A	14.00	18.50	7.00	10.50
172310-1206	BLACK	6	KEY A	17.50	22.00	8.75	14.00
172310-1207	BLACK	7	KEY A	21.00	25.50	10.50	17.50
172310-1208	BLACK	8	KEY A	24.50	29.00	12.25	21.00
172310-2202	NATURAL	2	KEY B	3.50	8.00	1.75	0.00
172310-2203	NATURAL	3	KEY B	7.00	11.50	3.50	0.00
172310-2204	NATURAL	4	KEY B	10.50	15.00	5.25	7.00
172310-2205	NATURAL	5	KEY B	14.00	18.50	7.00	10.50
172310-2206	NATURAL	6	KEY B	17.50	22.00	8.75	14.00
172310-2207	NATURAL	7	KEY B	21.00	25.50	10.50	17.50
172310-2208	NATURAL	8	KEY B	24.50	29.00	12.25	21.00

30 MICROINCH GOLD PLATING							
PART NO.	COLOR	CIRCUIT SIZE	KEY OPTION	DIM A	DIM F	DIM C	DIM D
172310-1302	BLACK	2	KEY A	3.50	8.00	1.75	0.00
172310-1303	BLACK	3	KEY A	7.00	11.50	3.50	0.00
172310-1304	BLACK	4	KEY A	10.50	15.00	5.25	7.00
172310-1305	BLACK	5	KEY A	14.00	18.50	7.00	10.50
172310-1306	BLACK	6	KEY A	17.50	22.00	8.75	14.00
172310-1307	BLACK	7	KEY A	21.00	25.50	10.50	17.50
172310-1308	BLACK	8	KEY A	24.50	29.00	12.25	21.00
172310-2302	NATURAL	2	KEY B	3.50	8.00	1.75	0.00
172310-2303	NATURAL	3	KEY B	7.00	11.50	3.50	0.00
172310-2304	NATURAL	4	KEY B	10.50	15.00	5.25	7.00
172310-2305	NATURAL	5	KEY B	14.00	18.50	7.00	10.50
172310-2306	NATURAL	6	KEY B	17.50	22.00	8.75	14.00
172310-2307	NATURAL	7	KEY B	21.00	25.50	10.50	17.50
172310-2308	NATURAL	8	KEY B	24.50	29.00	12.25	21.00

NOTE: DATUM -A- IS ON PCB COMPONENT SIDE

FUNCTIONAL SYMBOLS	THIS DRAWING CONTAINS INFORMATION THAT IS PROPRIETARY TO MOLEX ELECTRONIC TECHNOLOGIES, LLC AND SHOULD NOT BE USED WITHOUT WRITTEN PERMISSION	CURRENT REV DESC:		molex																											
	<table border="1"> <tr><td>DIMENSION UNITS</td><td>SCALE</td></tr> <tr><td>mm</td><td></td></tr> </table>	DIMENSION UNITS	SCALE		mm		<table border="1"> <tr><td>GENERAL TOLERANCES (UNLESS SPECIFIED)</td></tr> <tr><td>ANGULAR TOL ± °</td></tr> <tr><td>4 PLACES ±</td></tr> <tr><td>3 PLACES ±</td></tr> <tr><td>2 PLACES ± 0.25</td></tr> <tr><td>1 PLACE ± 0.5</td></tr> <tr><td>0 PLACES ±</td></tr> </table>		GENERAL TOLERANCES (UNLESS SPECIFIED)	ANGULAR TOL ± °	4 PLACES ±	3 PLACES ±	2 PLACES ± 0.25	1 PLACE ± 0.5	0 PLACES ±	<table border="1"> <tr><td>EC NO: 693449</td><td>2022/01/19</td></tr> <tr><td>DRWN: GLLI</td><td>2022/01/26</td></tr> <tr><td>CHK'D: XQZHANG</td><td>2022/01/26</td></tr> <tr><td>APPR: XQZHANG</td><td>2022/01/26</td></tr> </table>	EC NO: 693449	2022/01/19	DRWN: GLLI	2022/01/26	CHK'D: XQZHANG	2022/01/26	APPR: XQZHANG	2022/01/26	<table border="1"> <tr><td>ULTRA-FIT R/A HEADER</td><td>2-8 CKTS SINGLE ROW</td></tr> <tr><td colspan="2">PRODUCT CUSTOMER DRAWING</td></tr> </table>	ULTRA-FIT R/A HEADER	2-8 CKTS SINGLE ROW	PRODUCT CUSTOMER DRAWING			
DIMENSION UNITS	SCALE																														
mm																															
GENERAL TOLERANCES (UNLESS SPECIFIED)																															
ANGULAR TOL ± °																															
4 PLACES ±																															
3 PLACES ±																															
2 PLACES ± 0.25																															
1 PLACE ± 0.5																															
0 PLACES ±																															
EC NO: 693449	2022/01/19																														
DRWN: GLLI	2022/01/26																														
CHK'D: XQZHANG	2022/01/26																														
APPR: XQZHANG	2022/01/26																														
ULTRA-FIT R/A HEADER	2-8 CKTS SINGLE ROW																														
PRODUCT CUSTOMER DRAWING																															
DIVISIONAL SYMBOLS	<table border="1"> <tr><td>INITIAL REVISION:</td><td>2014/03/05</td></tr> <tr><td>DRWN: DROSCA</td><td>2014/04/24</td></tr> <tr><td>APPR: JCOMERCI</td><td></td></tr> </table>	INITIAL REVISION:	2014/03/05	DRWN: DROSCA	2014/04/24	APPR: JCOMERCI		<table border="1"> <tr><td>DOCUMENT NUMBER</td><td>DOC TYPE</td><td>DOC PART</td><td>REVISION</td></tr> <tr><td>SD-172310-1000</td><td>PSD</td><td>000</td><td>C3</td></tr> </table>	DOCUMENT NUMBER	DOC TYPE	DOC PART	REVISION	SD-172310-1000	PSD	000	C3	<table border="1"> <tr><td>DRAFT WHERE APPLICABLE MUST REMAIN WITHIN DIMENSIONS</td><td>THIRD ANGLE PROJECTION</td><td>DRAWING</td><td>SERIES</td><td>MATERIAL NUMBER</td><td>CUSTOMER</td><td>SHEET NUMBER</td></tr> <tr><td></td><td></td><td>A3-SIZE</td><td>172310</td><td></td><td>GENERAL MARKET</td><td>2 OF 3</td></tr> </table>	DRAFT WHERE APPLICABLE MUST REMAIN WITHIN DIMENSIONS	THIRD ANGLE PROJECTION	DRAWING	SERIES	MATERIAL NUMBER	CUSTOMER	SHEET NUMBER			A3-SIZE	172310		GENERAL MARKET	2 OF 3
INITIAL REVISION:	2014/03/05																														
DRWN: DROSCA	2014/04/24																														
APPR: JCOMERCI																															
DOCUMENT NUMBER	DOC TYPE	DOC PART	REVISION																												
SD-172310-1000	PSD	000	C3																												
DRAFT WHERE APPLICABLE MUST REMAIN WITHIN DIMENSIONS	THIRD ANGLE PROJECTION	DRAWING	SERIES	MATERIAL NUMBER	CUSTOMER	SHEET NUMBER																									
		A3-SIZE	172310		GENERAL MARKET	2 OF 3																									

9

8

7

6

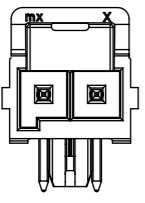
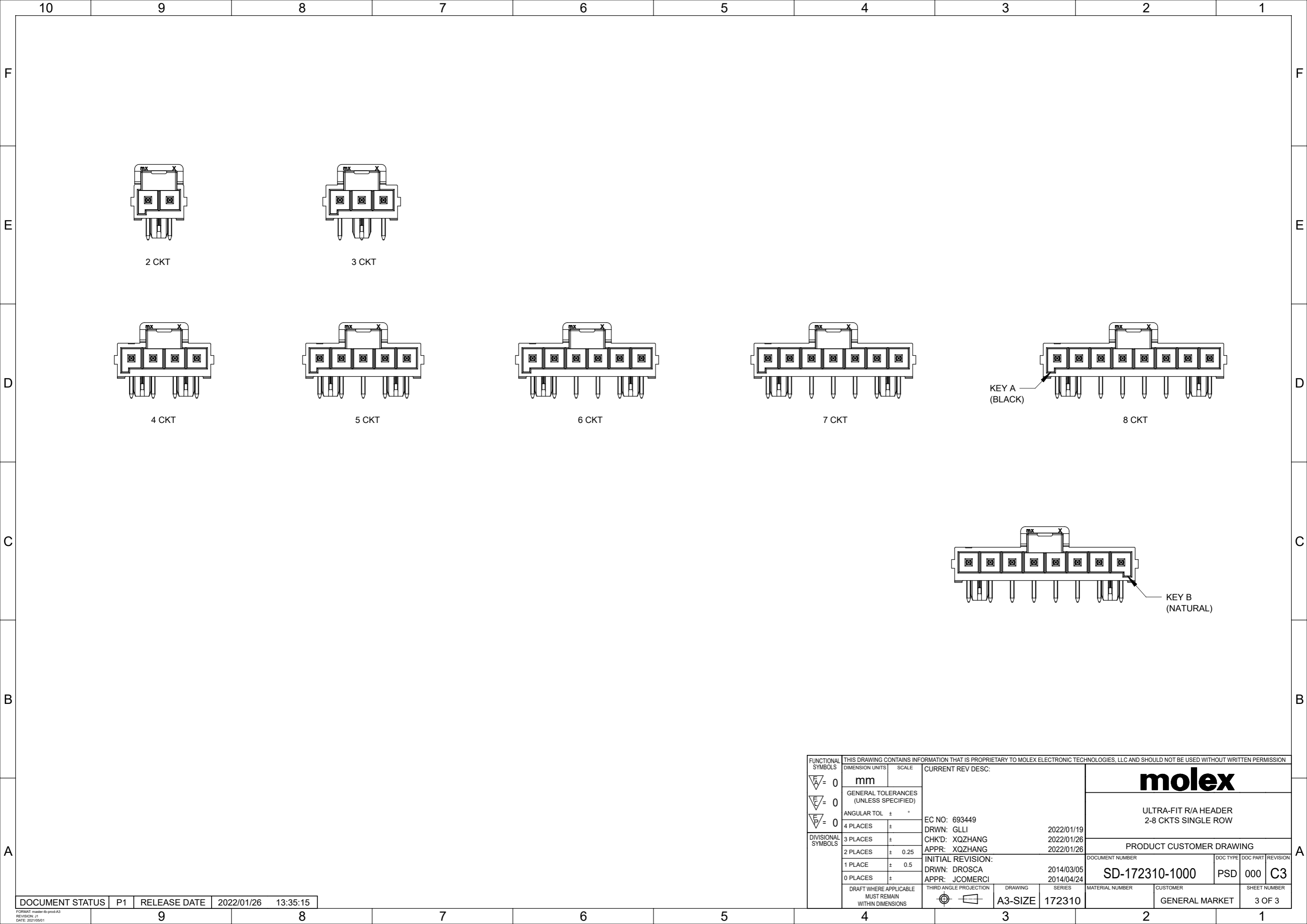
5

4

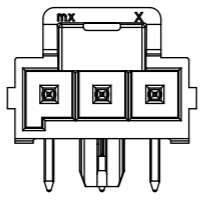
3

2

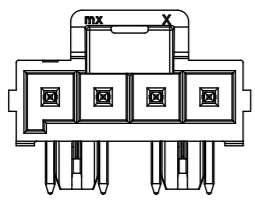
1



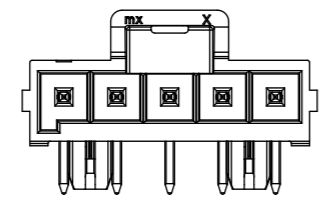
2 CKT



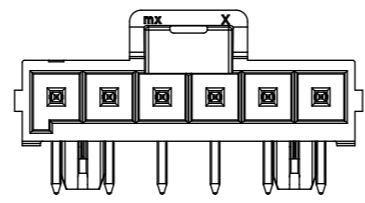
3 CKT



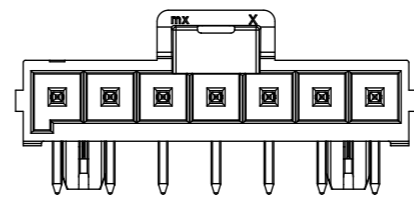
4 CKT



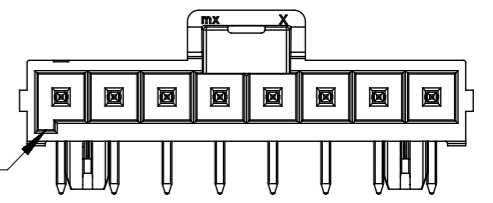
5 CKT



6 CKT

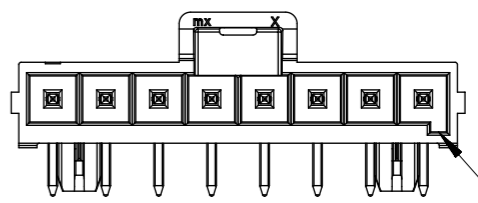


7 CKT



8 CKT

KEY A
(BLACK)



KEY B
(NATURAL)

DOCUMENT STATUS	P1	RELEASE DATE	2022/01/26	13:35:15
-----------------	----	--------------	------------	----------

FUNCTIONAL SYMBOLS $\nabla_A = 0$ $\nabla_F = 0$ $\nabla_P = 0$	THIS DRAWING CONTAINS INFORMATION THAT IS PROPRIETARY TO MOLEX ELECTRONIC TECHNOLOGIES, LLC AND SHOULD NOT BE USED WITHOUT WRITTEN PERMISSION DIMENSION UNITS: mm SCALE:	CURRENT REV DESC: EC NO: 693449 DRWN: GLLI CHK'D: XQZHANG APPR: XQZHANG INITIAL REVISION: DRWN: DROSCA APPR: JCOMERCI	 ULTRA-FIT R/A HEADER 2-8 CKTS SINGLE ROW							
	GENERAL TOLERANCES (UNLESS SPECIFIED) ANGULAR TOL ± ° 4 PLACES ± 3 PLACES ± 2 PLACES ± 0.25 1 PLACE ± 0.5 0 PLACES ±					2022/01/19 2022/01/26 2022/01/26	PRODUCT CUSTOMER DRAWING			
DIVISIONAL SYMBOLS	DRAFT WHERE APPLICABLE MUST REMAIN WITHIN DIMENSIONS	THIRD ANGLE PROJECTION 	DRAWING: A3-SIZE	SERIES: 172310	MATERIAL NUMBER: SD-172310-1000	CUSTOMER: GENERAL MARKET	DOC TYPE: PSD	DOC PART: 000	REVISION: C3	SHEET NUMBER: 3 OF 3