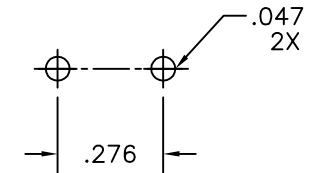
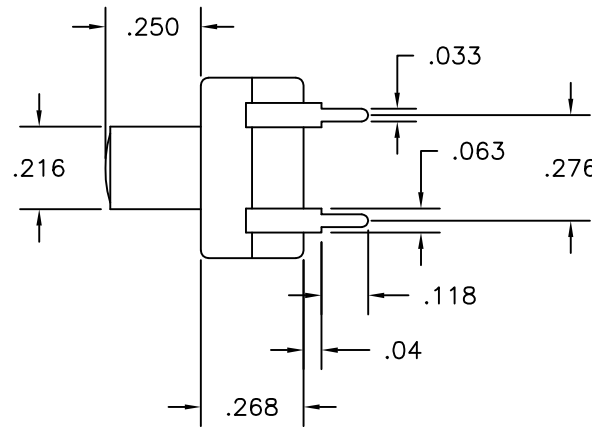
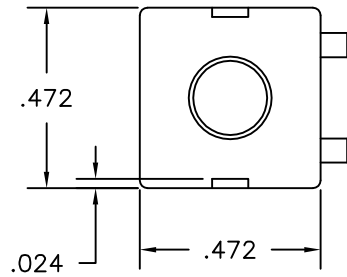
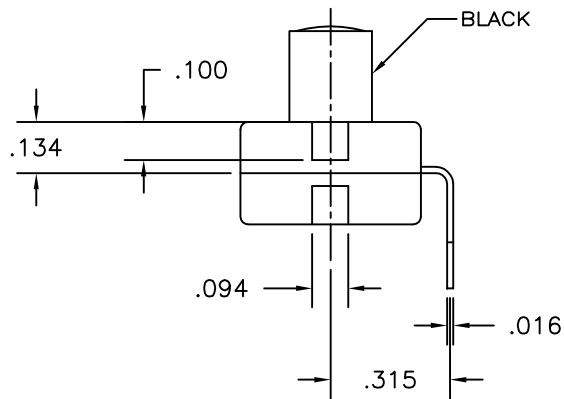


LTR	EN	DESCRIPTION	APPR	BY	DATE
A	-	INITIAL RELEASE	MT	DC	11-27-07
A1	-	CHANGE ELECTRICAL RATING FROM 300mA TO 500mA	MT	DC	08-24-12




RECOMMENDED  
MOUNTING PATTERN



JUDCO INVENTORY NO. 50-0101-00  
SWITCH TYPE: PUSH BUTTON, SPST, ON-OFF  
ELECTRICAL RATING: 12VDC, 500mA

CUSTOMER:  
CUST. PN:  
APPROVED BY: \_\_\_\_\_  
DATE: \_\_\_\_\_

DIMENSIONS IN INCHES DIMENSIONS ARE REFERENCE	 HARBOR CITY CALIFORNIA	
	TITLE <b>OUTLINE</b>	
DRAWN: DC	11-27-07	J-977-1 SPST, BENT TRMS, ON-OFF
APPR: KJ	08-24-12	DWG. NO.
ENG'G: IS	08-24-12	<b>1415-1237</b>
1415U1237A1.DWG		SHEET 1 OF 1

This document embodies a product, component, and/or design proprietary to JUDCO MANUFACTURING INC., and which is protected either as a trade secret, by U.S. Patent, or by copyright. It may not be used in any way without written express consent of JUDCO MANUFACTURING INC.