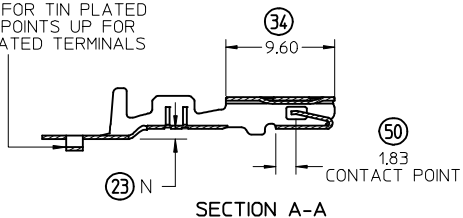
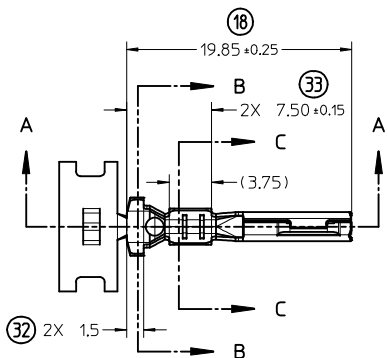


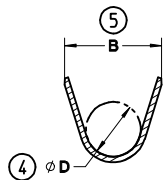
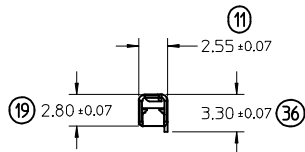
CARRIER BUMP DIRECTION  
POINTS DOWN FOR TIN PLATED  
TERMINALS. POINTS UP FOR  
PRECIOUS PLATED TERMINALS



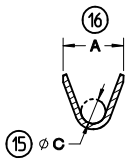
SECTION A-A



STAMP PLATING TYPE (Au-GOLD,  
Sn-TIN) OR (Ag-SILVER) IN THIS AREA



SECTION B-B  
Scale 5:1



SECTION C-C  
Scale 5:1

(11,43)  
PROGRESSION

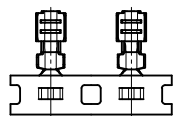


TABLE 1 - TERMINAL PART NUMBER AND DIMENSION REFERENCE

FAMILY	GENDER	SEALING	PLATING	PART NUMBER	PAYOFF DIRECTION	GRIP CODE	WIRE SIZES*	A ±0.3	B ±0.20	C ±0.3	D ±0.15	N ±0.10	SPECIAL CHARACTERISTICS	
MX150	RECEPTACLE	WIRE SEAL	Sn	34083-2003	RIGHT (B)	22	22AWG	2.5	4.85	0.9	2.90	0.55	HIGH PERFORMANCE Sn	
				34083-3003	LEFT (D)		0.35-0.50mm <sup>2</sup>							
				34083-2002	RIGHT (B)	18	20/18AWG	3.3	5.00	1.3	2.90	0.70		
				34083-3002	LEFT (D)		0.75-1.00mm <sup>2</sup>							
				34083-2001	RIGHT (B)	14	16/14AWG	3.6	5.00	1.7	2.90	0.90		
				34083-3001	LEFT (D)		1.50-2.00mm <sup>2</sup>							
			Au	34081-2005	RIGHT (B)	22	22AWG	2.5	4.85	0.9	2.90	0.55	HIGH PERFORMANCE Au	
				34081-3005	LEFT (D)		0.35-0.50mm <sup>2</sup>							
				34081-2004	RIGHT (B)	18	20/18AWG	3.3	5.00	1.3	2.90	0.70		
				34081-3004	LEFT (D)		0.75-1.00mm <sup>2</sup>							
				34081-2003	RIGHT (B)	14	16/14AWG	3.6	5.00	1.7	2.90	0.90		
				34081-3003	LEFT (D)		1.50-2.00mm <sup>2</sup>							
Ag	34081-4003	RIGHT (B)	22	22AWG	2.5	4.85	0.9	2.90	0.55	HIGH PERFORMANCE Ag				
	34081-5003	LEFT (D)		0.35-0.50mm <sup>2</sup>										
	34081-4002	RIGHT (B)	18	20/18AWG	3.3	5.00	1.3	2.90	0.70					
	34081-5002	LEFT (D)		0.75-1.00mm <sup>2</sup>										
	34081-4001	RIGHT (B)	14	16/14AWG	3.6	5.00	1.7	2.90	0.90					
	34081-5001	LEFT (D)		1.50-2.00mm <sup>2</sup>										

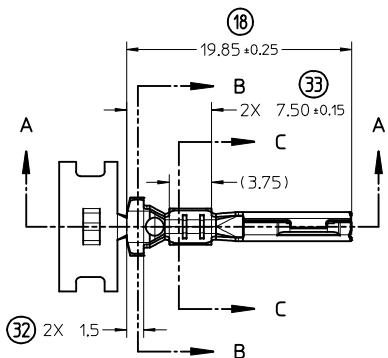
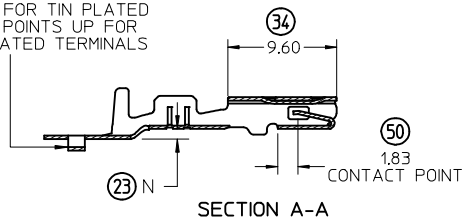
\* SEE AS-34083-002 FOR SPECIFIC WIRE TYPES

NOTES: (UNLESS OTHERWISE SPECIFIED)

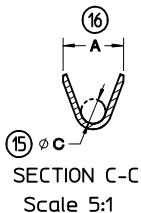
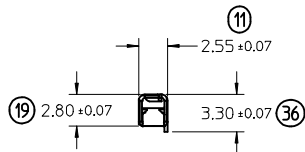
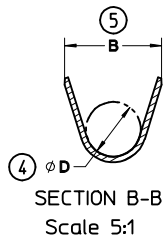
- MATING TERMINAL SHOWN ON DRAWING SD-34080-001
- MATERIAL: ASTM B422, UNS C19025, HR04  
THICKNESS: 0.30 mm ±0.01  
TEMPER: FULL HARD (REF)  
TENSILE: 496 MIN MPA
- TIN PLATED TERMINAL FINISH  
OVERALL UNDERPLATE ELECTRODEPOSITED NICKEL  
OVERALL ELECTRODEPOSITED REFLOW TIN
- GOLD PLATED TERMINAL FINISH  
OVERALL UNDERPLATE ELECTRODEPOSITED  
DUCTILE SULFAMATE NICKEL  
CONTACT AREA - ELECTRODEPOSITED GOLD  
GRIP AREA - ELECTRODEPOSITED 100%  
TIN MATTE FINISH
- SILVER PLATED TERMINAL FINISH  
OVERALL UNDERPLATE ELECTRODEPOSITED  
DUCTILE SULFAMATE NICKEL  
CONTACT AREA - ELECTRODEPOSITED PURE SILVER  
(0.5% MAX IMPURITIES) SEMI-  
BRIGHT FINISH  
- SILVER ANTI-TARNISH : EVABRITE  
GRIP AREA - ELECTRODEPOSITED 100%  
TIN MATTE FINISH
- MEETS PERFORMANCE SPECIFICATION FOR  
CABLE TO TERMINAL ELECTRICAL CRIMPS  
PER SAE/USCAR-21 (5/2002)
- MEETS PERFORMANCE STANDARD FOR  
AUTOMOTIVE ELECTRICAL CONNECTOR  
SYSTEMS FOR SAE/USCAR-2 REV. 4  
(TEMP CLASS 3) (5/2004)
- MEETS ELECTRICAL CONNECTION SYSTEM  
DESIGN SPECIFICATION (SDS) REV.11 (5/2002)
- MEETS FIELD CORRELATED LIFE TEST (FCLT) PER  
SAE/USCAR-20 (6/2004)
- INSERTION FORCE WITH INLINE BLADE TERMINAL:  
AVG. FORCE 3.1 N TIN (REFERENCE)  
2.7 N GOLD (REFERENCE)  
2.9 N SILVER (REFERENCE)
- REFERENCE FORD CAVITY SPECIFICATION  
97BG-14474-ADA
- REFERENCE AS-34083-002 FOR CRIMP INFORMATION
- REFERENCE PK-31300-516 FOR REEL DIRECTION
- REFERENCE PS-34083-002 FOR PRODUCT SPECIFICATION

MINOR CORRECTIONS EC NO: UAU2014-1374 DRAWN BY JENNINGS01 2014/03/03 CHKD:ADHIR 2014/06/11 APPR:BMOSER 2014/06/17	QUALITY SYMBOLS ▽=0 ▽=0 ▽=0	GENERAL TOLERANCES (UNLESS SPECIFIED)		DIMENSION STYLE MM ONLY		SCALE 3:1	DESIGN UNITS METRIC	THIRD ANGLE PROJECTION	
		mm	INCH	DRAWN BY K.FERGUSON	DATE 4/14/2009	MX 150 RECEPTACLE CABLE SEAL			
		4 PLACES ± ---	± ---	CHECKED BY A. DHIR	DATE 4/14/2009				
		3 PLACES ± ---	± ---	APPROVED BY B. MOSER	DATE 4/14/2009	molex			
2 PLACES ± 0.10	± ---	MATERIAL NO. SEE TABLE		DOCUMENT NO. SD-34083-002	SHEET NO. 1 OF 1				
1 PLACE ± 0.3	± ---	THIS DRAWING CONTAINS INFORMATION THAT IS PROPRIETARY TO MOLEX INCORPORATED AND SHOULD NOT BE USED WITHOUT WRITTEN PERMISSION							
0 PLACE ±	±								

CARRIER BUMP DIRECTION  
POINTS DOWN FOR TIN PLATED  
TERMINALS. POINTS UP FOR  
PRECIOUS PLATED TERMINALS



STAMP PLATING TYPE (Au-GOLD,  
Sn-TIN) OR (Ag-SILVER) IN THIS AREA



(11,43)  
PROGRESSION

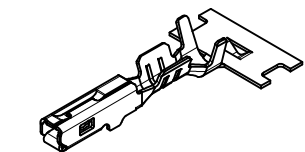
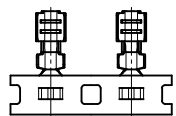


TABLE 1 - TERMINAL PART NUMBER AND DIMENSION REFERENCE

FAMILY	GENDER	SEALING	PLATING	PART NUMBER	PAYOFF DIRECTION	GRIP CODE	WIRE SIZES*	A ±0.3	B ±0.20	C ±0.3	D ±0.15	N ±0.10	SPECIAL CHARACTERISTICS	
MX150	RECEPTACLE	WIRE SEAL	Sn	34083-2003	RIGHT (B)	22	22AWG	2.5	4.85	0.9	2.90	0.55	HIGH PERFORMANCE Sn	
				34083-3003	LEFT (D)		0.35-0.50mm <sup>2</sup>							
				34083-2002	RIGHT (B)	18	20/18AWG	3.3	5.00	1.3	2.90	0.70		
				34083-3002	LEFT (D)		0.75-1.00mm <sup>2</sup>							
				34083-2001	RIGHT (B)	14	16/14AWG	3.6	5.00	1.7	2.90	0.90		
				34083-3001	LEFT (D)		1.50-2.00mm <sup>2</sup>							
			Au	34081-2005	RIGHT (B)	22	22AWG	2.5	4.85	0.9	2.90	0.55	HIGH PERFORMANCE Au	
				34081-3005	LEFT (D)		0.35-0.50mm <sup>2</sup>							
				34081-2004	RIGHT (B)	18	20/18AWG	3.3	5.00	1.3	2.90	0.70		
				34081-3004	LEFT (D)		0.75-1.00mm <sup>2</sup>							
				34081-2003	RIGHT (B)	14	16/14AWG	3.6	5.00	1.7	2.90	0.90		
				34081-3003	LEFT (D)		1.50-2.00mm <sup>2</sup>							
Ag	34081-4003	RIGHT (B)	22	22AWG	2.5	4.85	0.9	2.90	0.55	HIGH PERFORMANCE Ag				
	34081-5003	LEFT (D)		0.35-0.50mm <sup>2</sup>										
	34081-4002	RIGHT (B)	18	20/18AWG	3.3	5.00	1.3	2.90	0.70					
	34081-5002	LEFT (D)		0.75-1.00mm <sup>2</sup>										
	34081-4001	RIGHT (B)	14	16/14AWG	3.6	5.00	1.7	2.90	0.90					
	34081-5001	LEFT (D)		1.50-2.00mm <sup>2</sup>										

\* SEE AS-34083-002 FOR SPECIFIC WIRE TYPES

NOTES: (UNLESS OTHERWISE SPECIFIED)

- MATING TERMINAL SHOWN ON DRAWING SD-34080-001
- MATERIAL: ASTM B422, UNS C19025, HR04  
THICKNESS: 0.30 mm ±0.01  
TEMPER: FULL HARD (REF)  
TENSILE: 496 MIN MPA
- TIN PLATED TERMINAL FINISH  
OVERALL UNDERPLATE ELECTRODEPOSITED NICKEL  
OVERALL ELECTRODEPOSITED REFLOW TIN
- GOLD PLATED TERMINAL FINISH  
OVERALL UNDERPLATE ELECTRODEPOSITED  
DUCTILE SULFAMATE NICKEL  
CONTACT AREA - ELECTRODEPOSITED GOLD  
GRIP AREA - ELECTRODEPOSITED 100%  
TIN MATTE FINISH
- SILVER PLATED TERMINAL FINISH  
OVERALL UNDERPLATE ELECTRODEPOSITED  
DUCTILE SULFAMATE NICKEL  
CONTACT AREA - ELECTRODEPOSITED PURE SILVER  
(0.5% MAX IMPURITIES) SEMI-  
BRIGHT FINISH  
- SILVER ANTI-TARNISH : EVABRITE  
GRIP AREA - ELECTRODEPOSITED 100%  
TIN MATTE FINISH
- MEETS PERFORMANCE SPECIFICATION FOR  
CABLE TO TERMINAL ELECTRICAL CRIMPS  
PER SAE/USCAR-21 (5/2002)
- MEETS PERFORMANCE STANDARD FOR  
AUTOMOTIVE ELECTRICAL CONNECTOR  
SYSTEMS FOR SAE/USCAR-2 REV. 4  
(TEMP CLASS 3) (5/2004)
- MEETS ELECTRICAL CONNECTION SYSTEM  
DESIGN SPECIFICATION (SDS) REV.11 (5/2002)
- MEETS FIELD CORRELATED LIFE TEST (FCLT) PER  
SAE/USCAR-20 (6/2004)
- INSERTION FORCE WITH INLINE BLADE TERMINAL:  
AVG. FORCE 3.1 N TIN (REFERENCE)  
2.7 N GOLD (REFERENCE)  
2.9 N SILVER (REFERENCE)
- REFERENCE FORD CAVITY SPECIFICATION  
97BG-14474-ADA
- REFERENCE AS-34083-002 FOR CRIMP INFORMATION
- REFERENCE PK-31300-516 FOR REEL DIRECTION
- REFERENCE PS-34083-002 FOR PRODUCT SPECIFICATION

MINOR CORRECTIONS EC NO: UAU2014-1374 DRAWN BY JENNINGS01 2014/03/03 CHKD:ADHIR 2014/06/11 APPR:BMOSER 2014/06/17	QUALITY SYMBOLS ▽=0 ▽=0 ▽=0	GENERAL TOLERANCES (UNLESS SPECIFIED)		DIMENSION STYLE MM ONLY		SCALE 3:1	DESIGN UNITS METRIC	THIRD ANGLE PROJECTION		
		mm	INCH	DRAWN BY K.FERGUSON	DATE 4/14/2009	MX 150 RECEPTACLE CABLE SEAL				
		4 PLACES ± ---	± ---	CHECKED BY A. DHIR	DATE 4/14/2009					
		3 PLACES ± ---	± ---	APPROVED BY B. MOSER		DATE 4/14/2009	molex			
2 PLACES ± 0.10	± ---	MATERIAL NO. SEE TABLE		DOCUMENT NO. SD-34083-002	SHEET NO. 1 OF 1					
1 PLACE ± 0.3	± ---	DRAFT WHERE APPLICABLE MUST REMAIN WITHIN DIMENSIONS								
0 PLACE ±	±	THIS DRAWING CONTAINS INFORMATION THAT IS PROPRIETARY TO MOLEX INCORPORATED AND SHOULD NOT BE USED WITHOUT WRITTEN PERMISSION								