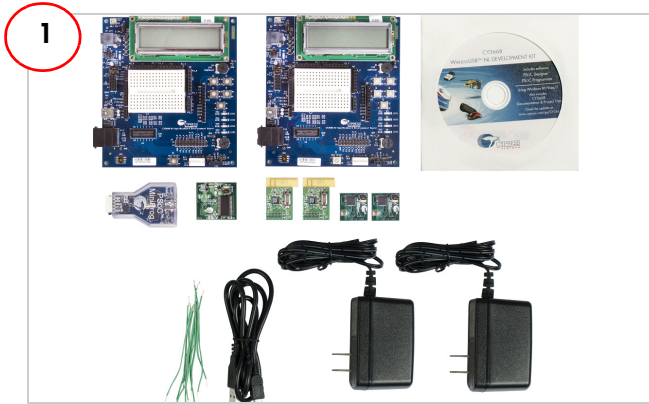


# CY3668 WIRELESSUSB™-NL DEVELOPMENT KIT QUICK START GUIDE

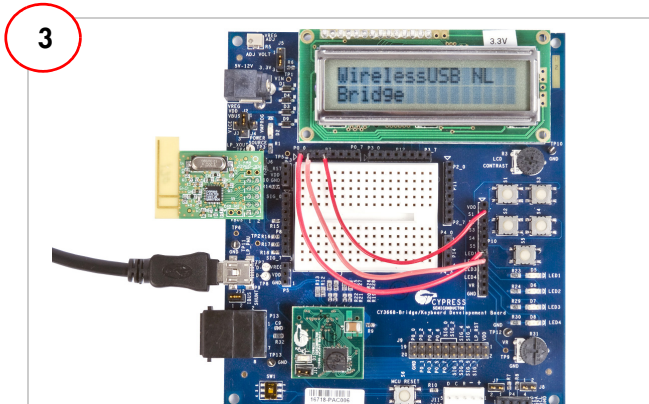


The CY3668 DVK consists of two development boards, two WUSB-NL Radio modules, one enCoRe II module, two enCoRe V modules, one MiniProg, two 12-V power adapters, one USB A/Mini-B cable, one CD, and 10 jumper wires.

**Note:** When you receive the kit, ensure that the enCoRe V modules are connected on the development boards.



- Insert the CY3668 kit CD into the computer's CD drive.
- If the WirelessUSB-NL DVK installer application does not launch automatically, launch it manually by clicking 'cyautorun.exe'.
- Click **Install WirelessUSB NL DVK** to install PSoC Designer, PSoC Programmer, and WirelessUSB-NL DVK software.



## Key instructions for programming Bridge and Keyboard

- Do not attach the WUSB-NL module to development boards.
- Do not attach any power source (AC-DC adapter or USB cable) to development boards.

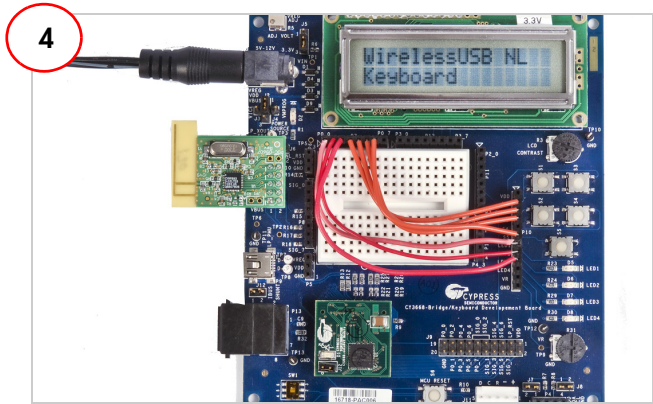
## Setting up the Bridge

- Program one of the development boards with the Bridge firmware that is located at <Install\_Directory>\Cypress\CY3668 DVK\1.0\Firmware\Bridge\NL\_Bridge\_enCoReV\NL\_Bridge\_enCoReV\NL\_Bridge\_enCoReV.hex. See the user guide for the programming procedure.

**Note:** The default install directory is "C:\Program Files" or "C:\Program Files (x86)"

- Attach the following wires from P7 to P10: PO\_3 to S1, PO\_0 to LED1, and PO\_1 to LED2.
- Plug in the WUSB-NL module on the development board
- Connect the Bridge to the computer using the USB cable

If the LCD panel text is not visible, increase the LCD contrast by rotating the knob located below the LCD panel in clockwise direction.



## Setting up the Keyboard

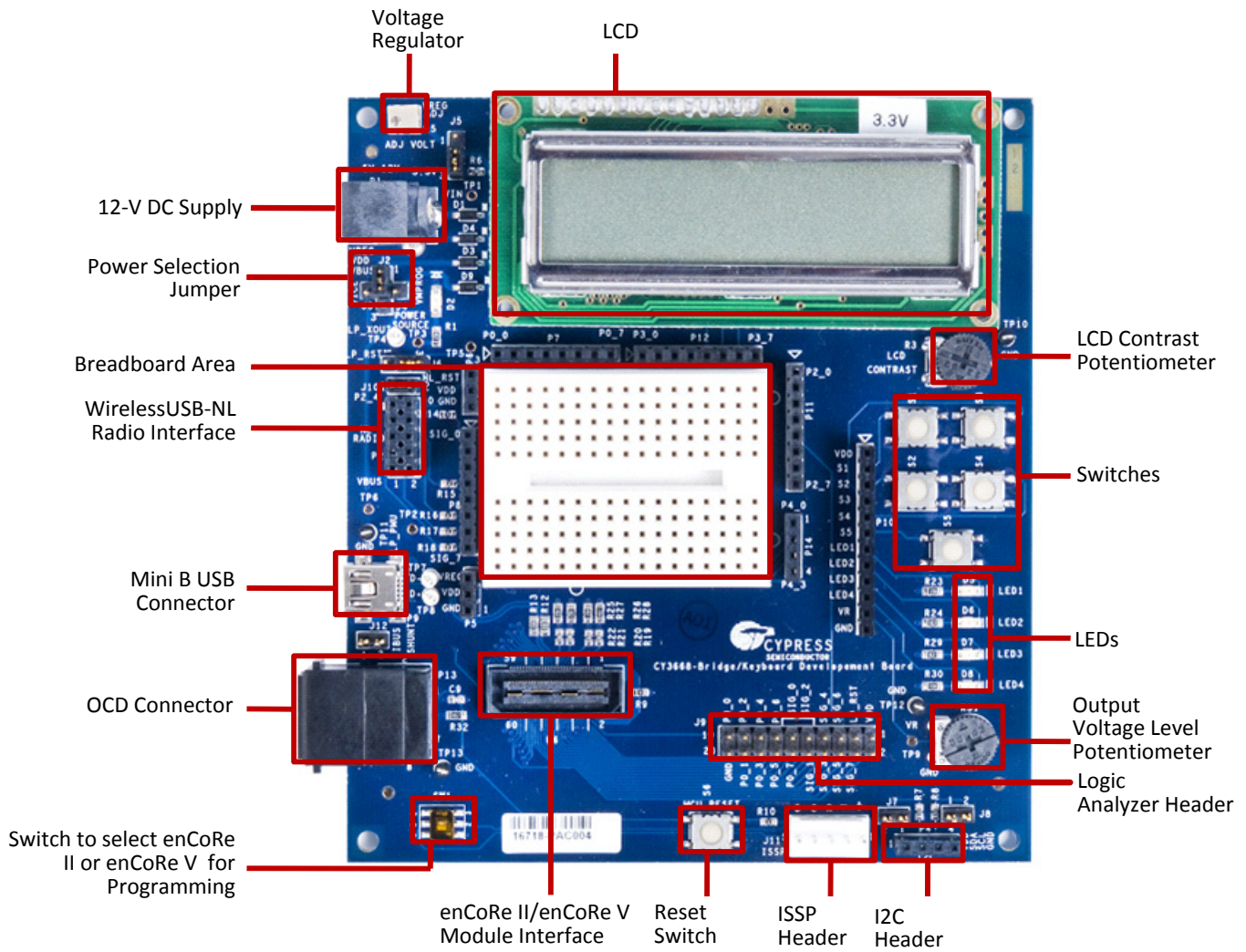
- Program the other development board with the keyboard firmware located at <Install\_Directory>\Cypress\CY3668 DVK\1.0\Firmware\Keyboard\NL\_Keyboard\_enCoReV\NL\_Keyboard\_enCoReV\NL\_Keyboard\_enCoReV.hex. Use the same procedure as for the Bridge.
- Attach the following wires from P7 to P10: PO\_3 to S1, PO\_4 to S2, PO\_5 to S3, PO\_6 to S5, PO\_0 to LED1, PO\_1 to LED2, and PO\_2 to LED3.
- Plug in the WUSB-NL module on the development board.
- Power the keyboard using the 12-V power adapter.

## Establish Wireless Link and Data Transfer

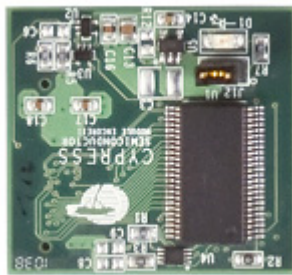
- Press and release S1 on the Bridge to change to Bind mode. LED1 on the Bridge blinks to denote Bind mode. Press and release S5 on the Keyboard to change to Bind mode; wait for 2 seconds. On successful binding, LED1 on the Bridge switches off and the wireless link is now ready for data transfer
- On the Keyboard, press and release S1 for Num Lock, S2 for Caps Lock, and S3 for Scroll Lock. The actions corresponding to the pressed key are executed on the computer.

# CY3668 WIRELESSUSB™-NL DEVELOPMENT KIT QUICK START GUIDE

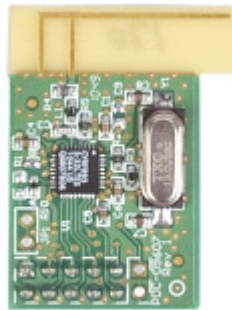
## CY3668 Development Board Details



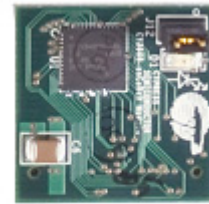
**enCoRe II Module\***



**WirelessUSB-NL Radio Module**



**enCoRe V Module**



\* Refer to the user guide for details on example projects using the enCoRe II module.

For the latest information about this kit, visit  
<http://www.cypress.com/go/CY3668>

