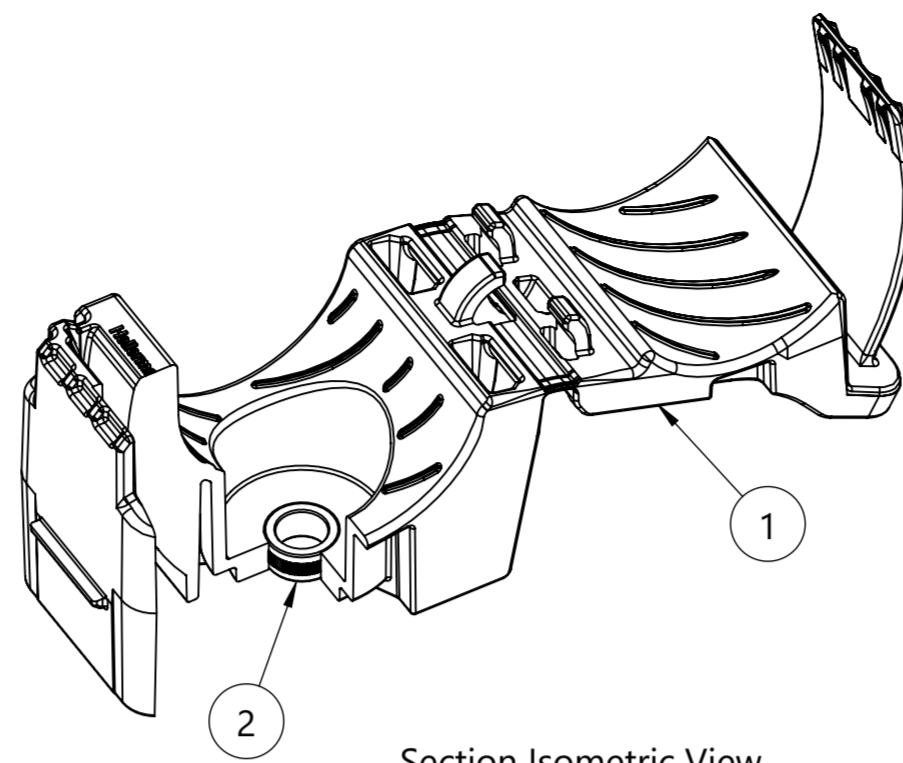
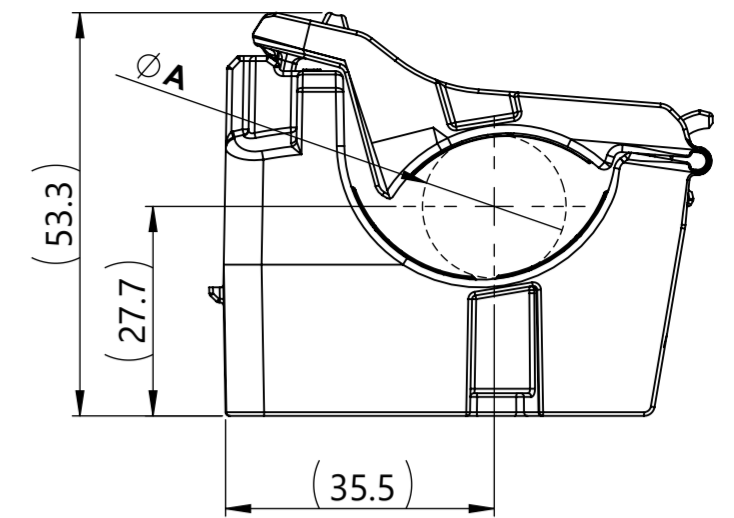


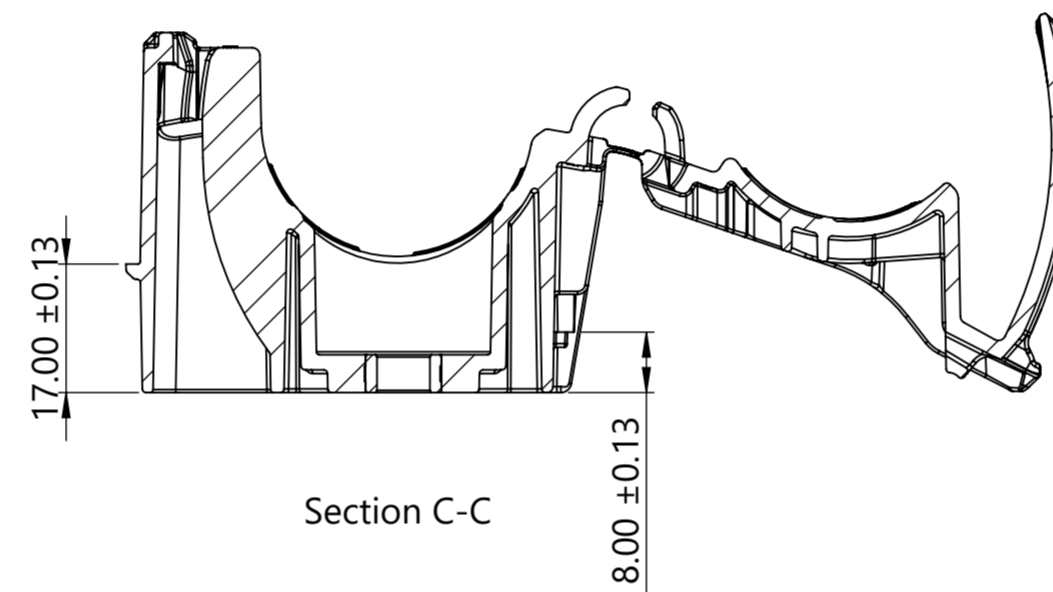
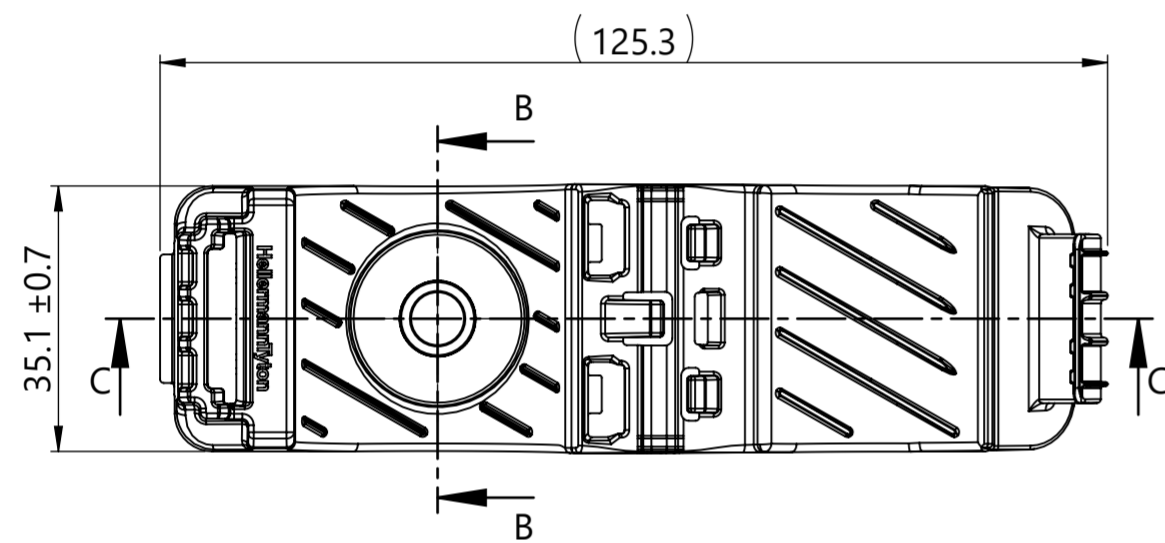
Isometric View
Product shipped in clamp open position



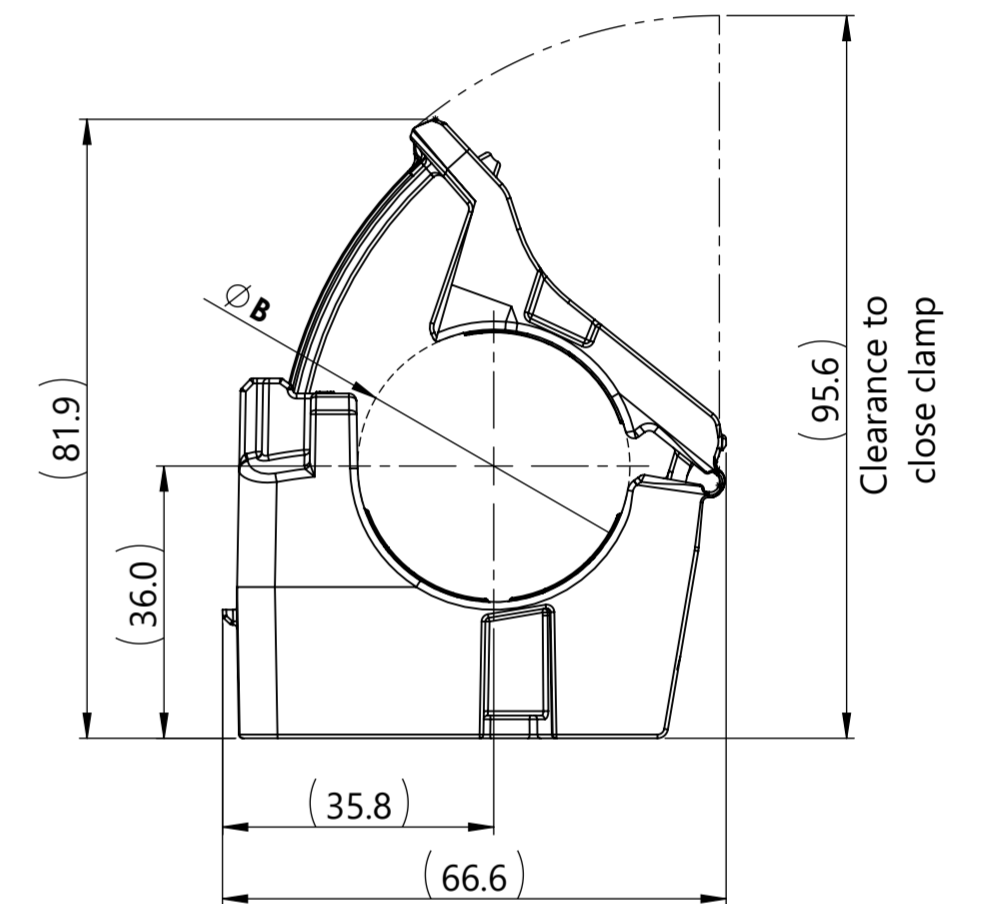
Section Isometric View



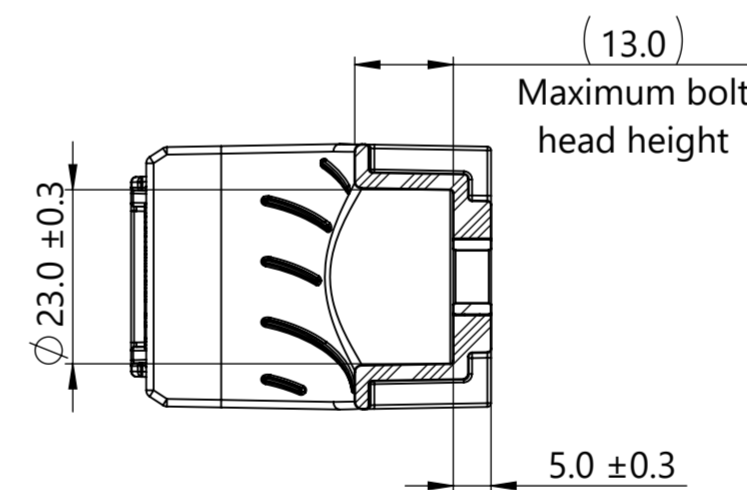
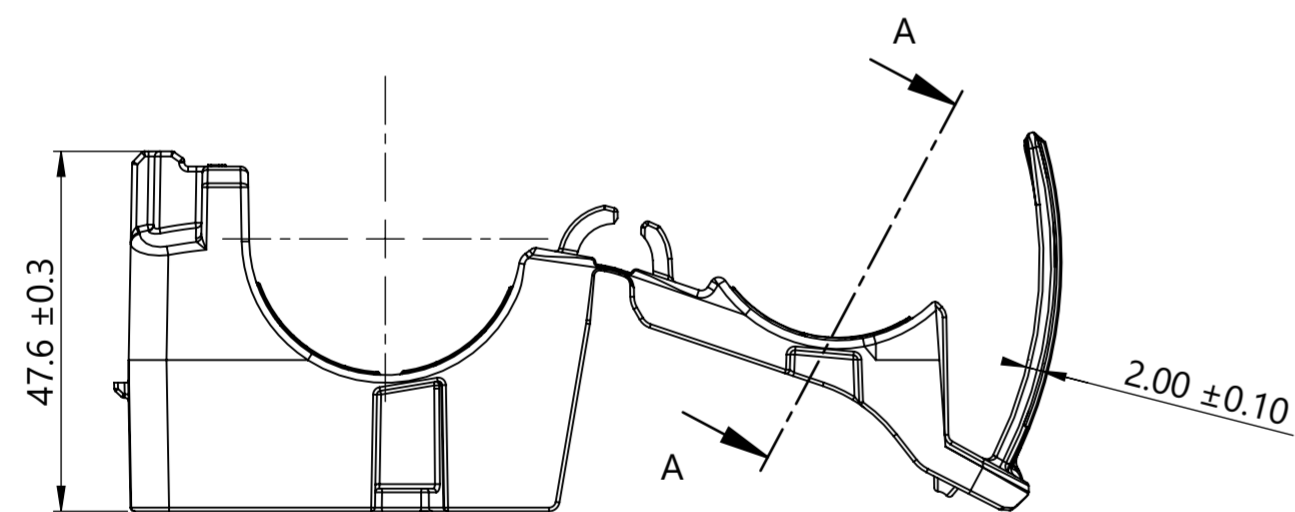
Minimum Bundle Diameter



Section C-C



Maximum Bundle Diameter



Section B-B

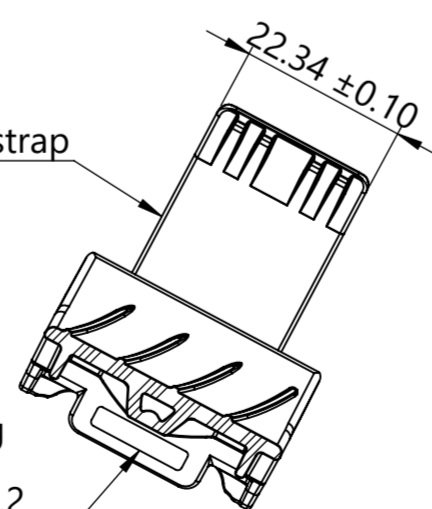
Performance requirements:
Dry as molded with ≤ 0.5% moisture content:

- ITS-0001 Ratchet Clamp Split Mandrel Test: 445 newtons [100 lbf] minimum at a nominal bundle diameter of 25.40 [1.000in]

Bundle Types	A Minimum Diameter	B Maximum Diameter
Soft	19.4 ± 0.3	36.0 ± 0.3
Hard	18.6 ± 0.3	35.2 ± 0.3

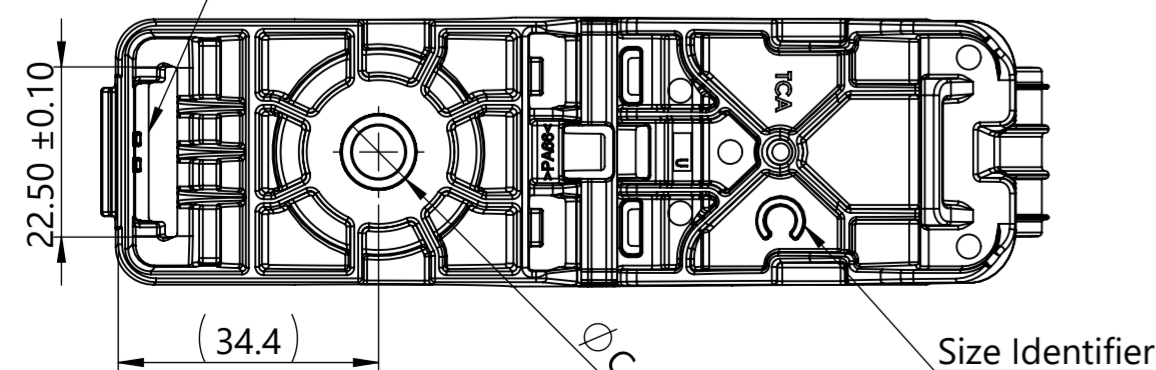
0.10 Maximum flash or mismatch allowed around perimeter of strap

Saddle opening accommodates Straps up to 13.2 wide and 2.1 thick



Section A-A

0.10 Maximum flash or mismatch allowed inside head

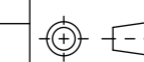


Notes:

- Material: See chart
- Material color: See chart
- Maximum percent regrind permissible: 25%
- Maximum allowable flash to be: 0.50 "Unless otherwise noted"
- Maximum allowable mismatch to be: 0.15 "Unless otherwise noted"

Global Part Number	Global Part Description	Mounting Hole Size	Torque Specification	∅C	Item Number	Qty.	Type Number	Material	Color
21-0219	CMRCCHM6-PA66HIRHSUV-BK	M6	13 N-m [115.06 lb-in]	7.1 ± 0.1	1	1	-	PA66HIRHSUV	Black
					2	1	16A060LSX050N	Zinc Plated Steel	Silver
21-0222	CMRCCHM8-PA66HIRHSUV-BK	M8	31 N-m [274.37 lb-in]	9.1 ± 0.1	1	1	-	PA66HIRHSUV	Black
					2	1	16A080LSX050N	Zinc Plated Steel	Silver
21-0224	CMRCCHM10-PA66HIRHSUV-BK	M10	62 N-m [548.75 lb-in]	11.2 ± 0.1	1	1	-	PA66HIRHSUV	Black
					2	1	16A100LSX050N	Zinc Plated Steel	Silver

Revision level			Revision Record			The copyright of this drawing is reserved by HellermannTyton.		Drawn		Date (YYYY/MM/DD)		Title		Scale	
Drawing	State	Part	ECN	016828	All drawing revision are stored in CAD PDM database		Spangler	2021/04/28	CMRCCHM6		Center Mount RCC Ratchet P-Clamp, Size C, Clamp Range 18.9 to 36.0, High Torque		1:1		
00.0	Design Release	-	Approved		Toll		2021/04/28		Drawing-No		21-0219-103-CSU		Global Project Number 21-0219		
Changed	Date (YYYY/MM/DD)	Approved		Toll		2021/04/28		Drawing-No		21-0219-103-CSU		Format A2			
Spangler	2022/01/18	Approved		Toll		2022/01/18		Drawing-No		21-0219-103-CSU		Sheet 1/1			
Approved	Date (YYYY/MM/DD)	Approved		Toll		2022/01/18		Drawing-No		21-0219-103-CSU		Sheet 1/1			
Toll	2022/01/18	Approved		Toll		2022/01/18		Drawing-No		21-0219-103-CSU		Sheet 1/1			



HellermannTyton
www.HellermannTyton.com

Scale 1:1
Global Project Number 21-0219
Format A2
Sheet 1/1