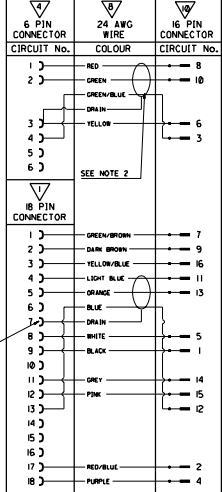


BILL OF MATERIALS

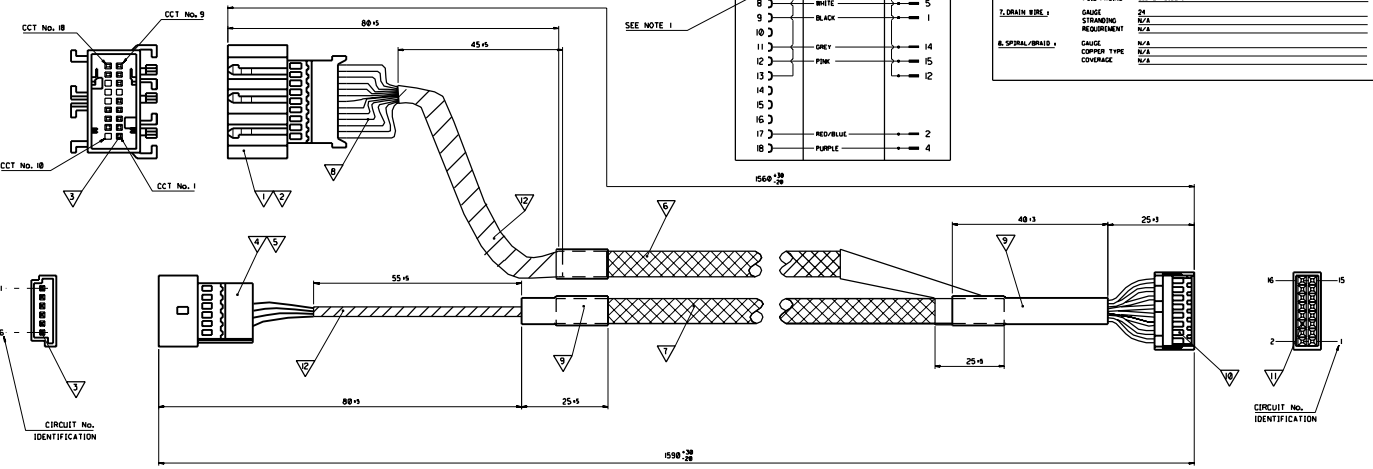
Table with 5 columns: NO., QUANTITY, SUPPLIER, DESCRIPTION, PART NO., SEE NOTE. Contains 17 rows of material specifications.

WIRING DIAGRAM



CABLE SPECIFICATION

Cable specification form with sections: CABLE TYPE, 2. CABLE REQUIREMENTS, 3. CONDUCTOR SPECIFICATIONS, 4. FILLER, 5. SEPARATOR, 6. SHIELD, 7. DRAIN WIRE, 8. SPIRAL BRAID. Includes a cross-section diagram of a 24 AWG cable.



NOTES:
1. DRAIN WIRE TO 18 PIN HOUSING TO BE COVERED WITH HEAT SHRINK INSULATION TUBING.
2. DRAIN AND YELLOW WIRE TO BE CHAMPED TOGETHER.
3. ASSEMBLIES TESTED FOR SHORTS AND DISCONTINUITIES.
4. PACKAGING PARTS PACKED LOOSELY IN BOXES.
5. HEAT SHRINK TO OVERLAP QUIET SLEEVE BY 72MM.

UPDATE CABLE & TA 2000-0626 DRYAN 000/01

2:1 \*
B.ENRIGH 99/07/29
D.RYAN 99/07/29
MMWLHITE 97/12/23
COC-ID CAR FAX CABLE

A3

1/2 92601-0052 SD-92601-101 1 OF 1

MODIFICATION RECORD INDEX table with columns: ECN, SS, DATE, INIT., SHTS. AFFECTED, DESCRIPTION OF MOD. Includes details for E2800-0039 and E2800-0628.

LEVEL CHART

Level chart showing a grid of levels (1-16) and sheets (17-63). Includes revision history for levels 54-63.