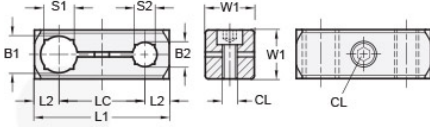




MT10/10-CC2WP-A

Ruland Two-Way Connector Clamp, Thru Holes 10mmx10mm, L 44mm, Aluminum




Description

Ruland MT10/10-CC2WP-A a two-way connector clamp with parallel thru holes for 10mm round and 8mm square tubes, M5 clamp screws, 16mm width/height, and 44mm overall length. It is designed to fit on Ruland tubes and flange bolt bases that begin with MTXX. MT10/10-CC2WP-A is aluminum and screws are 304 stainless steel for use in most industrial applications. This two-way connector clamp is commonly used to support tubes for mounting sensors, screens, reflectors, plexiglass machine guards, and other industrial components. The parallel thru holes make MT10/10-CC2WP-A an ideal connector clamp for compact mounting systems such as those found on small conveyors. MT10:12-ALK-M5-20 adjustable clamping handles can be used in place of standard hardware allowing for rapid repositioning of tubes or the connector without the need for tools. MT10/10-CC2WP-A is manufactured by Otto Ganter, inventoried by Ruland, and RoHS3 compliant.

Product Specifications

Thru Hole 1 Diameter B1	10 mm	Thru Hole 2 Diameter B2	10 mm
Thru Hole Tolerance	+0.09/-0 mm	Thru Hole 2 Tolerance	+0.09/-0 mm
Overall Length L1	44 mm	Edge To Center L2	8 mm
Center To Center LC	28 mm	Square Thru Hole 1 S1	8 mm
Square Thru Hole 2 S2	8 mm	Width & Height W1	16 mm
Clamp Screw CL	M5	Weight (lbs)	0.050700
Material Specification	Aluminum	Manufacturer	JW Winco/ Otto Ganter
UPC	634529231593	Country of Origin	Germany
Tariff Code	7609.00.0000		

Note 1 Performance ratings are for guidance only. The user must determine suitability for a particular application.

Prop 65  **WARNING** This product can expose you to the chemical Nickel (metallic), known to the State of California to cause cancer. For more information go to www.P65Warnings.ca.gov.