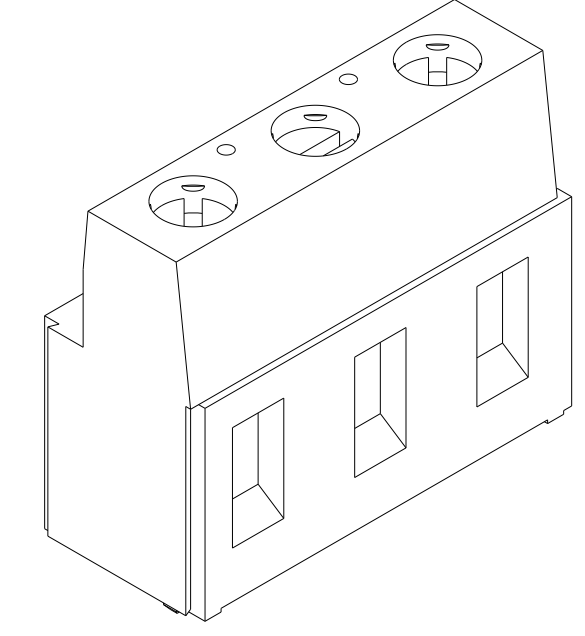
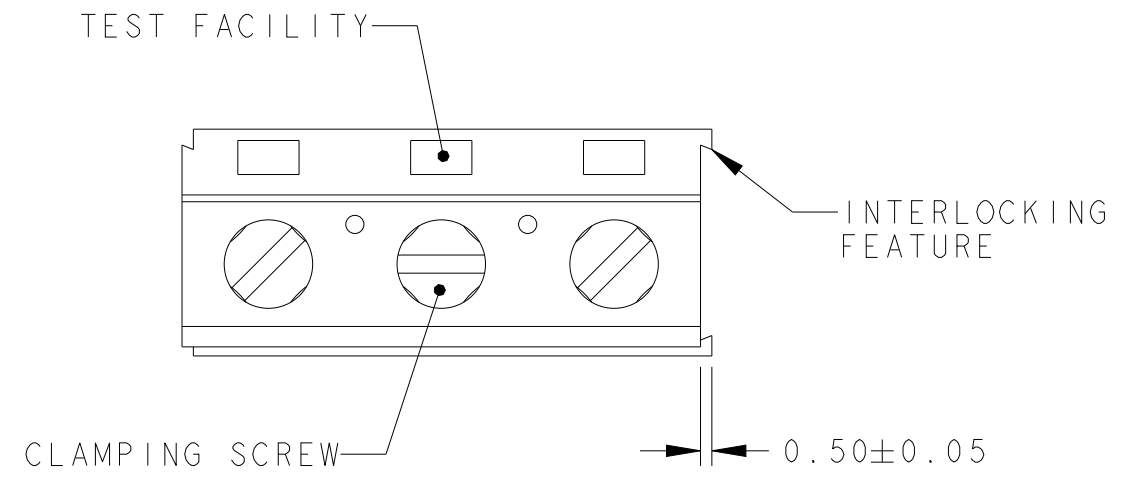


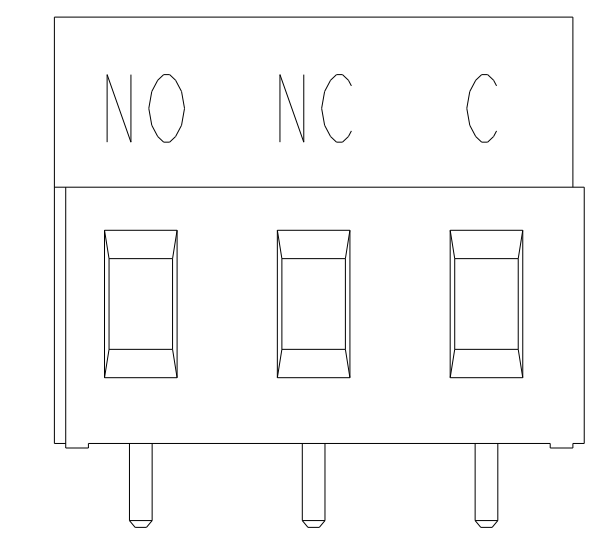
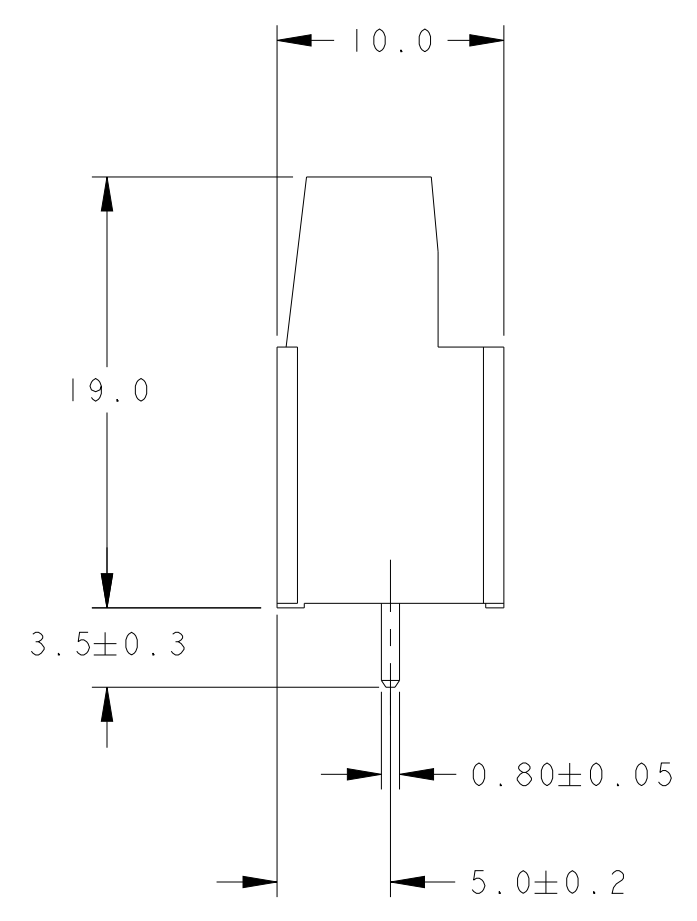
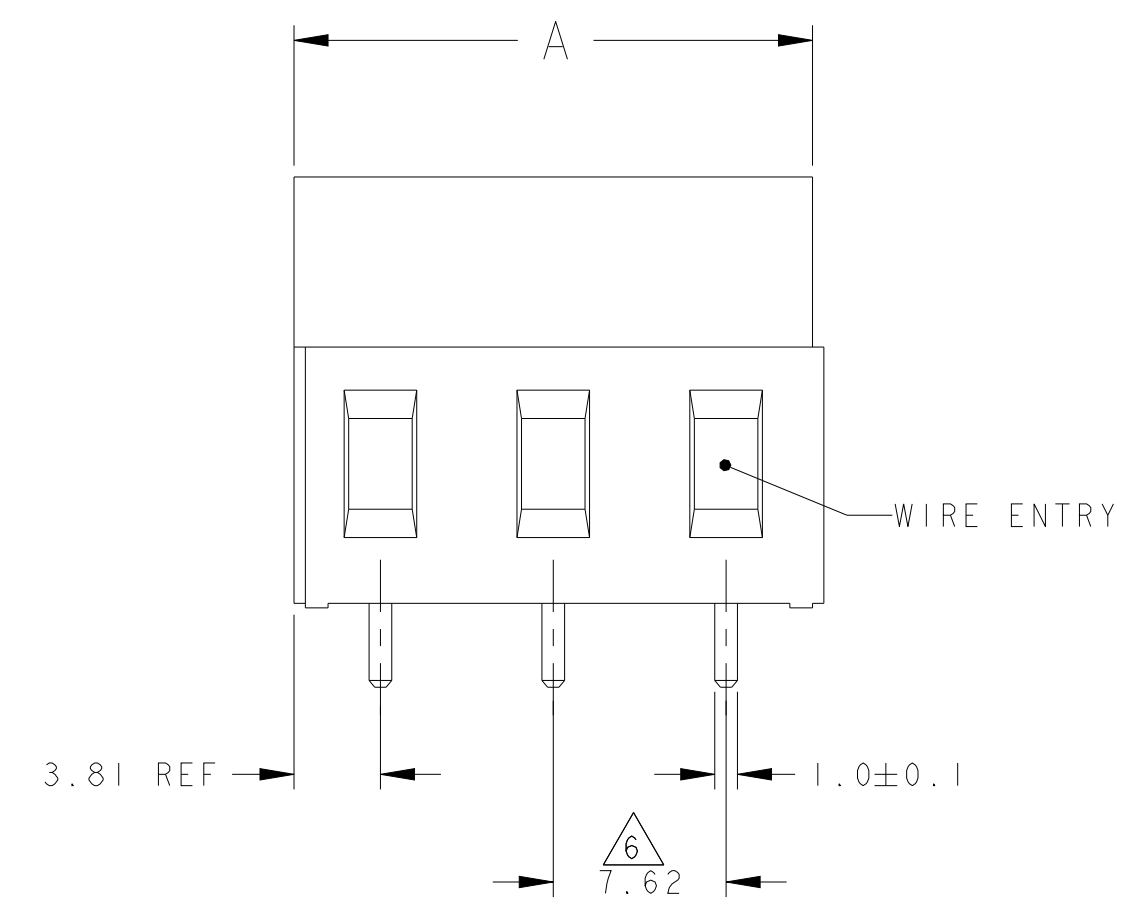
REVISIONS					
P	LTR	DESCRIPTION	DATE	DWN	APVD
D3		PN 282861-4 IS REACTIVATED	17JUL2018	RK	PS
D4		PN 282861-5 OBSOLETE	18OCT2021	SCB	SS



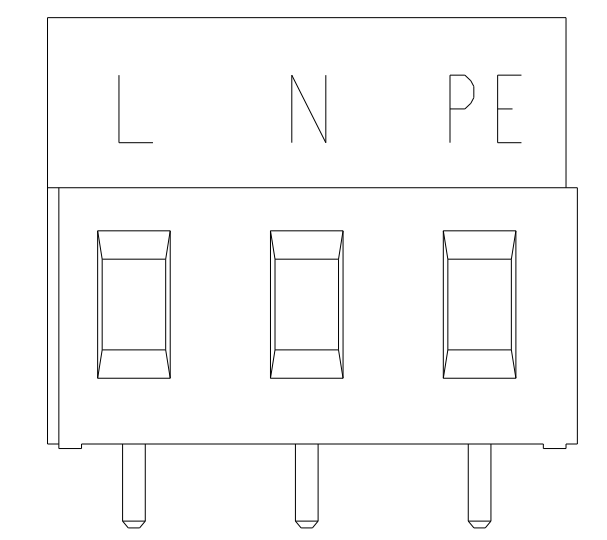
282861-3 AS SHOWN

NOTES:

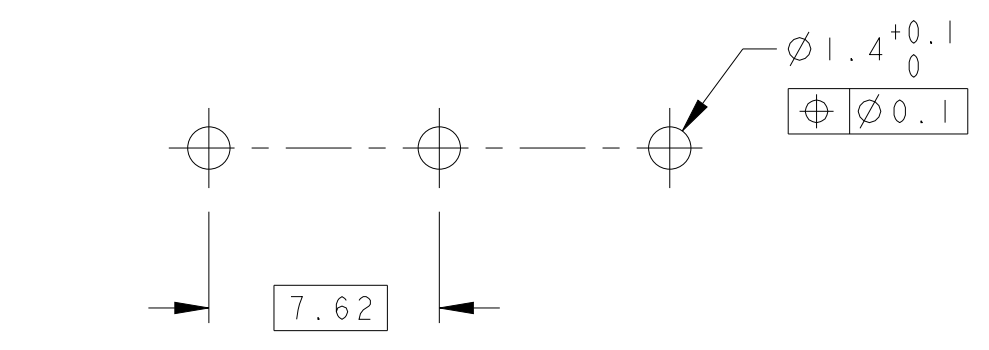
- MATERIALS AND FINISH  
HOUSING: PA 6-6, UL 94-V0, COLOR: SEE TABLE.  
CLAMP: BRASS, NICKEL PLATED.  
TERMINAL: BRASS, TIN PLATED.  
CLAMPING SCREW: M3, BRASS, NICKEL PLATED.
  - MECHANICAL  
MIN. PC BOARD HOLES DIAMETER : 1.4 mm  
MAX. PC BOARD THICKNESS : 2.4 mm  
WIRE STRIPPING LENGTH : 6.5 - 7.0 mm  
RECOMMENDED TIGHTENING TORQUE FOR SCREW : 0.5 Nm.
  - ELECTRICAL  
WIRE RANGE : 12-30 AWG  
MAX. VOLTAGE : 300 V  
MAX. CURRENT : 24 A  
CONTACT RESISTANCE : <15 m Ohm  
INSULATION RESISTANCE : >1000 M Ohm (500V DC)
  - END-TO-END STACKABLE W/INTERLOCK WITHOUT LOSS OF CENTERLINE SPACING.
  - RECOGNIZED UNDER THE COMPONENT PROGRAM OF UNDERWRITERS LABORATORIES INC. FILE NO E60677.
- 6 NOT CUMULATIVE TOLERANCE.  
7 INK MARKING, BLACK COLOR.



DETAIL L 7



DETAIL M 7



RECOMMENDED PC BOARD LAYOUT

OBSOLETE	GREEN	SEE DETAIL M	22.86	3	282861-5
	GRAY	SEE DETAIL L	22.86	3	282861-4
	GREEN	-	22.86	3	282861-3
	GREEN	-	15.24	2	282861-2
	HOUSING COLOR	MARKING	A	NO OF POSN	PART NUMBER

THIS DRAWING IS A CONTROLLED DOCUMENT.		DWN E. ZANOLINI	24OCT2001		
DIMENSIONS: mm		CHK D. BIEVENOUR	24OCT2001		
TOLERANCES UNLESS OTHERWISE SPECIFIED:		APVD D. BIEVENOUR	24OCT2001		
0 PLC	±	PRODUCT SPEC			
1 PLC	±0.3	108-20166			
2 PLC	±0.25	APPLICATION SPEC			
3 PLC	±	114-20079			
4 PLC	±	WEIGHT			
ANGLES	±2°	FINISH			
MATERIAL	SEE NOTES	CUSTOMER DRAWING		SCALE 3:1	SHEET 1 OF 1
		REV D4			