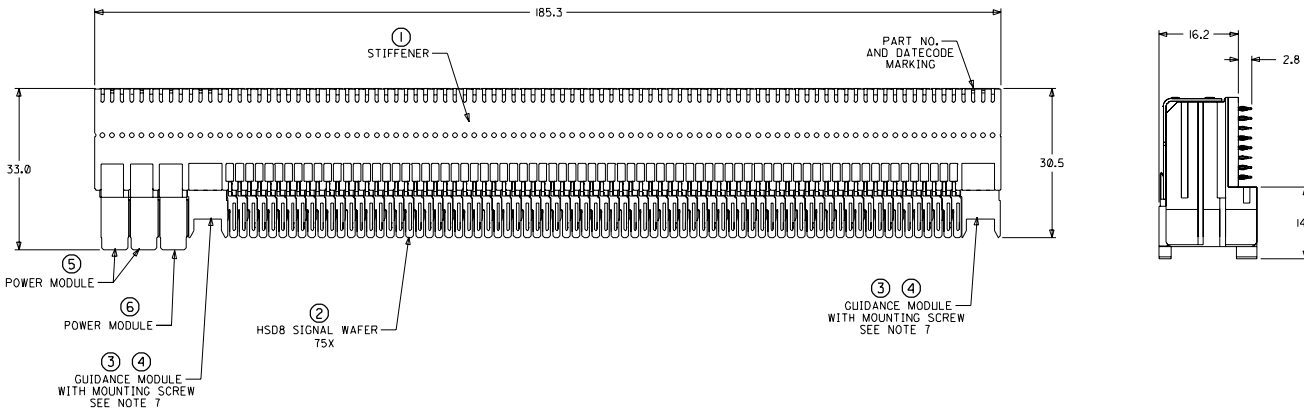
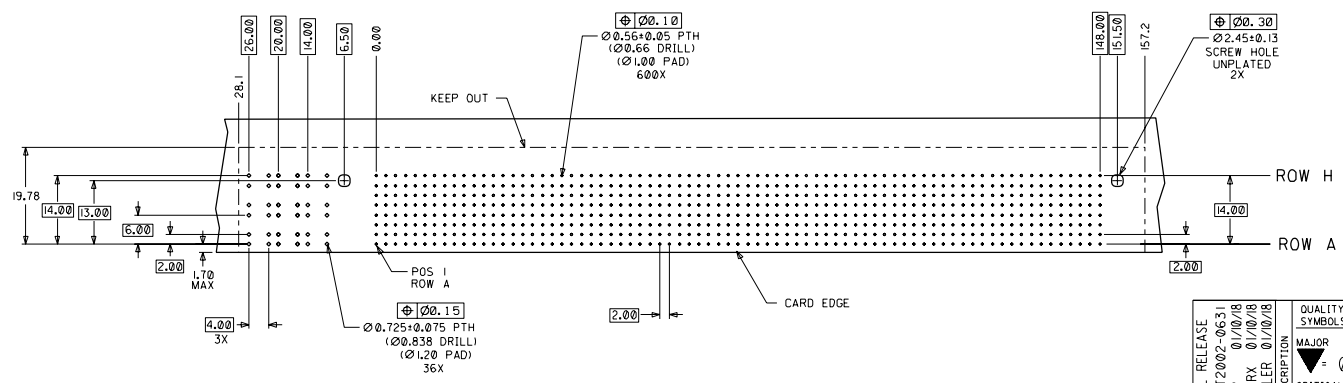
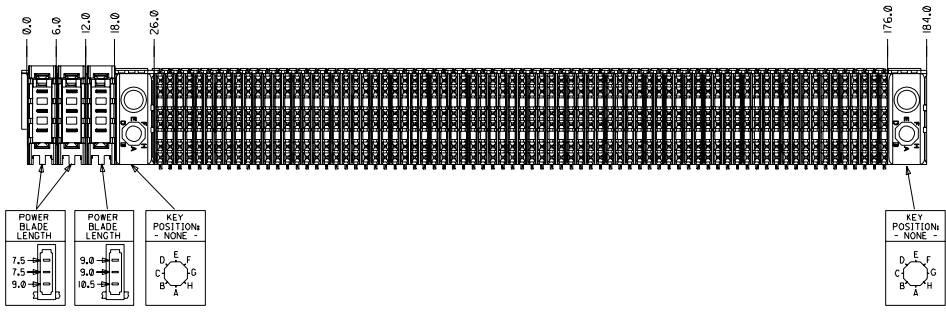


CUSTOMER: ENAVIS



- NOTES: (UNLESS OTHERWISE SPECIFIED)
- MATERIALS: HOUSING - LIQUID CRYSTAL POLYMER (LCP), GLASS-FILLED, UL94V-0, BLACK. TERMINALS - HIGH PERFORMANCE COPPER ALLOY. STIFFENER - STAINLESS STEEL.
 - FINISH: SELECTIVE GOLD (Au) IN CONTACT AREA, 0.00076mm MINIMUM THICKNESS; SELECTIVE TIN/LEAD (Sn/Pb) ON PCB TAILS, NICKEL (Ni) OVERALL.
 - REFER TO MOLEX PRODUCT SPECIFICATION PS-74031-999 FOR PERFORMANCE SPECIFICATIONS.
 - REFER TO MOLEX DOCUMENT SD-74681-002 FOR ADDITIONAL DETAIL ON THE HSDB SIGNAL WAFER.
 - REFER TO MOLEX DOCUMENT SD-74037-006 FOR ADDITIONAL DETAIL ON THE GUIDANCE MODULE.
 - REFER TO MOLEX DOCUMENT SD-74026-002 FOR ADDITIONAL DETAIL ON THE POWER MODULE.
 - MOUNTING SCREWS WILL BE BAGGED WITH EACH CONNECTOR.
 - PARTS ARE PACKAGED IN TUBES PER PK-70873-5041.



ITEM	PART NUMBER	DESCRIPTION	QTY
1	74046-0185	STIFFENER	1
2	74681-0001	HSDB WAFER	75
3	74037-0008	POLARIZING/GUIDE MODULE	2
4	73726-0000	GUIDE MODULE MNTG SCREW	2
5	74026-8211	POWER MODULE	2
6	74026-8322	POWER MODULE	1

DAUGHTERCARD HOLE PATTERN (CONNECTOR SIDE)

INITIAL RELEASE EC NO. UDT2002-06531 DRAWN: ATP 01/10/18 CHKS: LAURX 01/10/18 APPR: BIXLER 01/10/18	QUALITY SYMBOLS MAJOR: 0 CRITICAL: 0	GENERAL TOLERANCES (UNLESS SPECIFIED) mm INCH 4 PLACES ±0. -- 2. -- 3 PLACES ±0. -- 2. -- 2 PLACES ±0. -- 2. -- 1 PLACE ±0. -- 2. -- ANGULAR: ± 2°	SCALE: 2:1 DESIGN UNITS: mm INCH THIRD ANGLE PROJECTION DIMENSIONS: mm INCH mm ONLY SHT: REV: CAD ONLY	DRAWN BY & DATE: ATP 01/10/19 CHECKED BY & DATE: LAURX 01/10/19 APPROVED BY & DATE: BIXLER 01/10/19	TITLE: 8 ROW HSD DAUGHTERCARD ASSEMBLY SALES DRAWING MOLEX INCORPORATED	CAD FILENAME: SD-74680-089 MATERIAL NO.: 74680-0089 DRAWING NO.: SD-74680-089 SHEET NO.: 1 OF 1
	DRAFT WHERE APPLICABLE MUST REMAIN WITHIN DIMENSIONS					
	THIS DRAWING CONTAINS INFORMATION THAT IS PROPRIETARY TO MOLEX INCORPORATED AND SHOULD NOT BE USED WITHOUT WRITTEN PERMISSION.					
	SIZE D					