

Cheval

SA Series

NEW

Aluminum Design



Our SA Series of stand alone general use electronic enclosures is a highly versatile line of quality enclosures for both industrial and hobbyist use. The high grade aluminum body provides a strong and light weight structure and our “open frame” design, allows easy access to the components being assembled inside.

The Aluminum front and rear panels are ideal for end user customization. Available in 23 different sizes and configurations, the SA Series enclosures come flat packed and its unique “snap together” design requires only 4 screws to complete the assembly.

Standards and Materials

- Heights from 1.5U to 5U, conform to IEC-60297-1.
- Widths of 230mm, 305mm and 432mm
- Depths of 178mm and 279mm
- Premium grade (AL 5052) aluminum.
- Designed and manufactured under ISO 9001:2008 and ISO 14001:2004
- All materials RoHS compliant.



International Inquiries: Email: commce@chevalgrp.com

Tel: +66 2315 1504-5

Fax: +66 2315 1506

Thailand Inquiries: Email: domestic_sales@chevalgrp.com

Tel: +66 2744 1632

Fax: +66 2399 1783

Cheval Electronic Enclosure Co., Ltd



www.chevalgrp.com
www.chevalstore.com

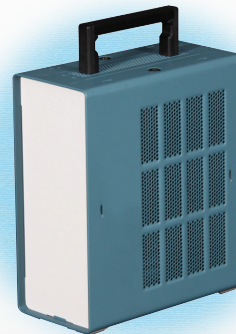
Key Features

- Light weight and strong
- Very durable all aluminum (AL 5052) construction
- Easy to assemble, only 4 screws needed
- Extensive top/bottom and side/side ventilation
- Two pieces of extruded aluminum component mounting bars for components fixing are included in the basic kit. Additional bars may be ordered as needed.
- Flat pack for efficient storage and shipping

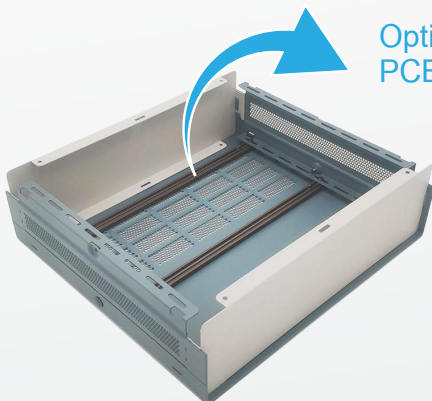
▶ Optional carrying straps



▶ Optional carrying handles



Optional mounting plates for PCB and heavy components



▶ “Open Frame” design maximizes user convenience for component assembly

Part Number	Description	Unit Gross Weight (kg.)	Carton Dimension H x W x D (mm.)
SAL1.5D1W1	SA Series, Aluminum, 1.5Ux178Dx203W	0.61	64 x 195 x 221
SAL1.5D1W2	SA Series, Aluminum, 1.5Ux178Dx305W	0.81	64 x 195 x 325
SAL1.5D1W3	SA Series, Aluminum, 1.5Ux178Dx432W	1.18	64 x 195 x 448
SAL1.5D2W1	SA Series, Aluminum, 1.5Ux279Dx203W	0.85	64 x 229 x 291
SAL1.5D2W2	SA Series, Aluminum, 1.5Ux279Dx305W	1.21	64 x 295 x 329
SAL1.5D2W3	SA Series, Aluminum, 1.5Ux279Dx432W	1.58	64 x 302 x 448
SAL2.0D1W1	SA Series, Aluminum, 2Ux178Dx203W	0.65	64 x 195 x 221
SAL2.0D1W2	SA Series, Aluminum, 2Ux178Dx305W	0.88	64 x 195 x 325
SAL2.0D1W3	SA Series, Aluminum, 2Ux178Dx432W	1.29	64 x 195 x 448
SAL2.0D2W2	SA Series, Aluminum, 2Ux279Dx305W	1.22	64 x 295 x 329
SAL2.0D2W3	SA Series, Aluminum, 2Ux279Dx432W	1.72	64 x 302 x 448
SAL3.0D1W2	SA Series, Aluminum, 3Ux178Dx305W	0.98	64 x 195 x 325
SAL3.0D1W3	SA Series, Aluminum, 3Ux178Dx432W	1.50	64 x 195 x 448
SAL3.0D2W1	SA Series, Aluminum, 3Ux279Dx203W	1.03	64 x 229 x 291
SAL3.0D2W2	SA Series, Aluminum, 3Ux279Dx305W	1.52	64 x 295 x 329
SAL3.0D2W3	SA Series, Aluminum, 3Ux279Dx432W	1.95	64 x 302 x 448
SAL4.0D1W2	SA Series, Aluminum, 4Ux178Dx305W	1.14	64 x 195 x 325
SAL4.0D1W3	SA Series, Aluminum, 4Ux178Dx432W	1.71	64 x 195 x 448
SAL4.0D2W1	SA Series, Aluminum, 4Ux279Dx305W	1.34	64 x 229 x 291
SAL4.0D2W2	SA Series, Aluminum, 4Ux279Dx305W	1.53	64 x 295 x 329
SAL4.0D2W3	SA Series, Aluminum, 4Ux279Dx432W	2.00	64 x 302 x 448
SAL5.0D2W2	SA Series, Aluminum, 5Ux279Dx305W	1.69	64 x 295 x 329
SAL5.0D2W3	SA Series, Aluminum, 5Ux279Dx432W	2.15	64 x 302 x 448

