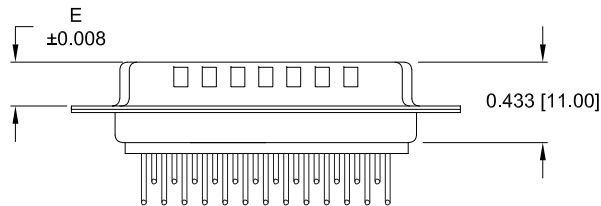
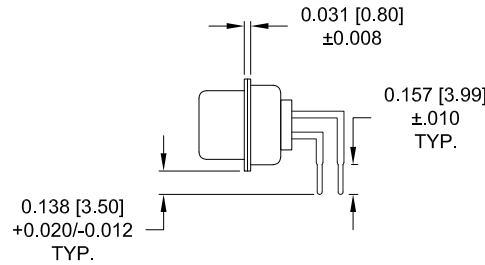
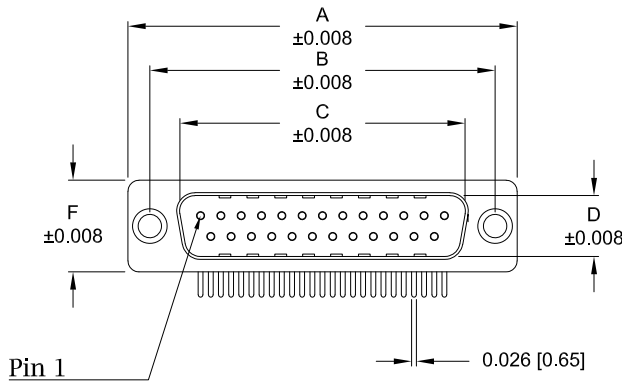


Description: 0.370" Right Angle / Machined

Dimensions (inch/mm)						
Pins	A	B	C	D	E	F
9	1.213	0.984	0.665	0.327	0.240	0.492
	30.80	25.00	16.90	8.30	6.10	12.50
15	1.543	1.311	0.994	0.327	0.240	0.492
	39.20	33.30	25.25	8.30	6.10	12.50
25	2.089	1.852	1.533	0.327	0.240	0.492
	53.05	47.05	38.95	8.30	6.10	12.50
37	2.732	2.500	2.181	0.327	0.240	0.492
	69.40	63.50	55.40	8.30	6.10	12.50
50	2.638	2.402	2.079	0.439	0.240	0.602
	67.00	61.00	52.80	11.15	6.10	15.30



Material:

Shell: Nickel Plated Steel
 Insulator: UL 94V-O Rated, White PA6T
 Process Temperature: 260°C
 Contact: Precision Machined Copper Alloy

Electrical:

Current Rating: 5 AMPS
 Contact Resistance: 10 mOhms Max.
 Insulation Resistance: 5 GOhms Min.
 Working Voltage: 250V
 Temperature: -55° C TO +125° C

174-EYY-11YRYY1

Series

Position

E09
 E15
 E25
 E37
 E50

Gender

1 = Male

Termination

1 = PCB Mounting

Shell Plating

3 = Nickel

RoHS Compliant

Hardware Options

00 = No Hardware
 01 = 0,098" Clinch Nut (Board Side)
 14 = Standard Bracket with 4-40 Screwlock
 24 = Standard Bracket with 4-40 Captive Screw
 46 = Boardlock Bracket with 4-40 Insert

Plating Options

1 = Gold Flash
 2 = 30μ" Gold
 3 = 50μ" Gold

RoHS COMPLIANT

UNITS = inch [mm]

DO NOT SCALE FROM DRAWING



THESE DRAWINGS AND SPECIFICATIONS ARE THE PROPERTY OF NorComp AND SHALL NOT BE REPRODUCED, COPIED OR USED AS THE BASIS FOR THE MANUFACTURE OR SALE OF APPARATUS WITHOUT WRITTEN PERMISSION.

DRAWN:

PAM JENKINS

DATE:

11/28/2005

NorComp

SCALE:

NTS

SHEET

1

OF

3

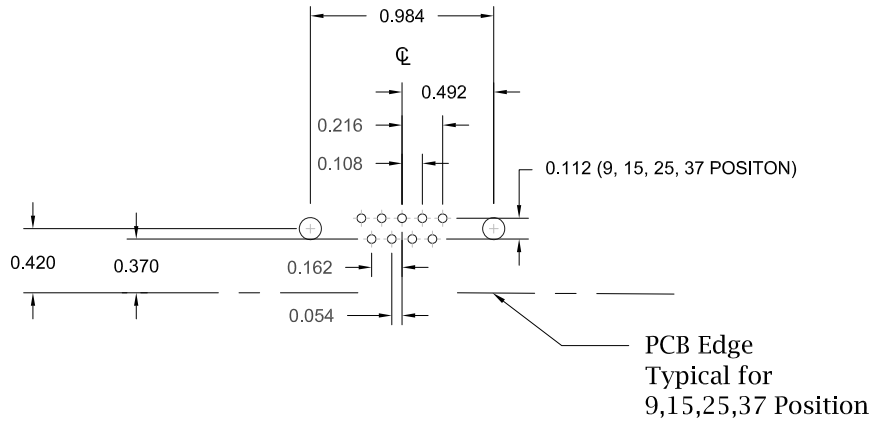
REV

17

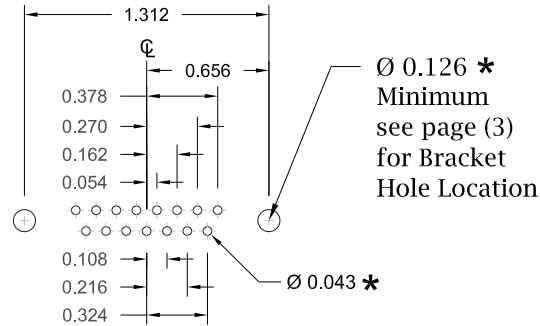
DWG NO.

174-EYY-11YRYY1

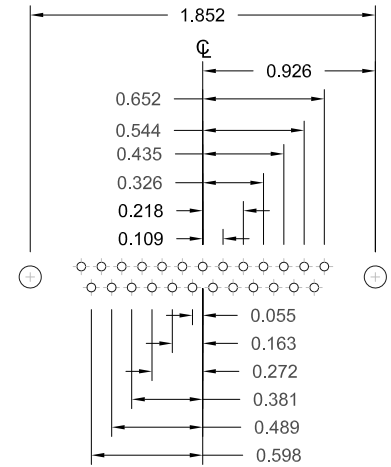
9 POSITION



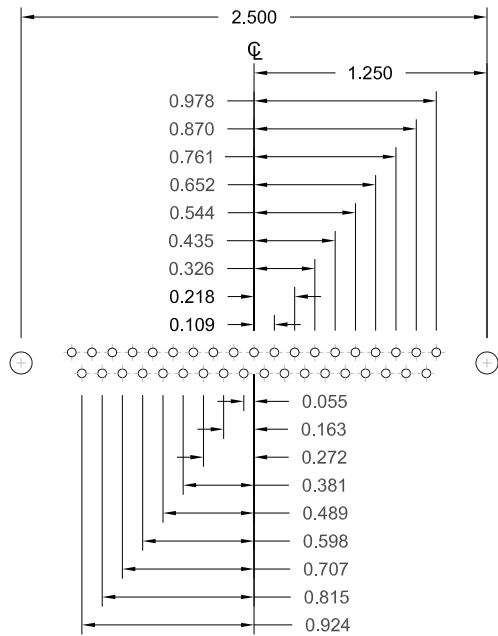
15 POSITION



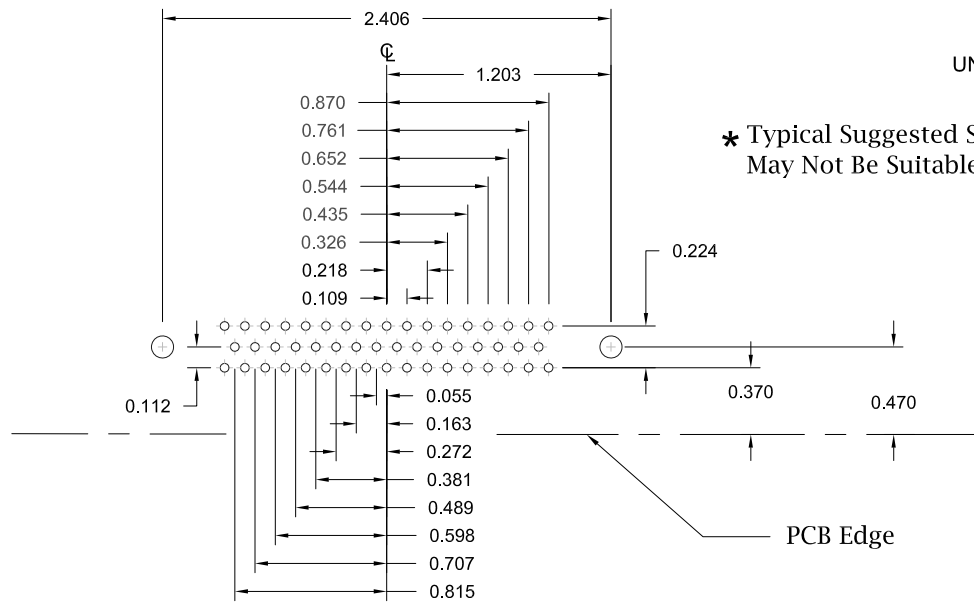
25 POSITION



37 POSITION



50 POSITION



UNITS = inch

* Typical Suggested Size
May Not Be Suitable For All Applications

RoHS COMPLIANT

DO NOT SCALE FROM DRAWING



THESE DRAWINGS AND SPECIFICATIONS ARE THE PROPERTY OF NorComp AND SHALL NOT BE REPRODUCED, COPIED OR USED AS THE BASIS FOR THE MANUFACTURE OR SALE OF APPARATUS WITHOUT WRITTEN PERMISSION.

DRAWN:
PAM JENKINS
DATE:
11/28/2005

NorComp

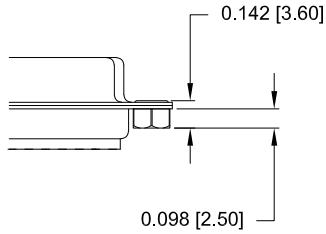
SCALE:
NTS
DWG NO.

SHEET OF
2 3

REV
17

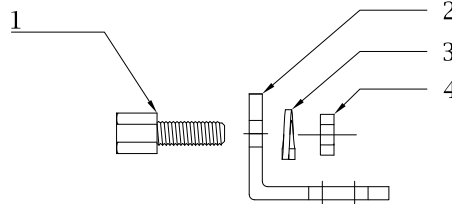
174-EYY-11YRY1

01 Hardware Option
0.098" Clinch Nut (Board Side)



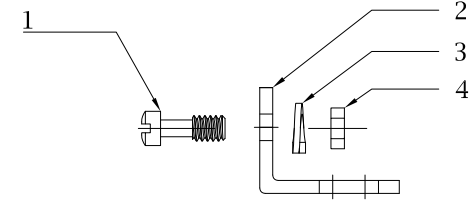
Clinch Nut has 4-40 Internal Threads

14 Hardware Option		
	Description	NorComp Part Number
1	4-40 Screwlock	SFSO4401NR
2	Bracket	K501CZ
3	Lock Washer	LW1-T
4	4-40 Nut	N4401N



**Search Hardware Part Number To Obtain Technical Specifications.

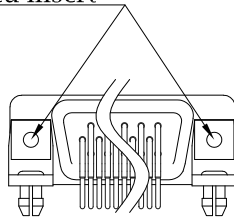
24 Hardware Option		
	Description	NorComp Part Number
1	4-40 Captive Screw	SSH4401T
2	Bracket	K501CZ
3	Lock Washer	LW1-T
4	4-40 Nut	N4401N



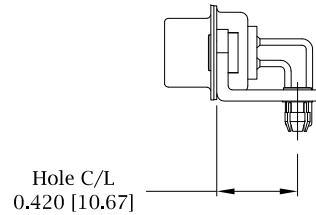
**Search Hardware Part Number To Obtain Technical Specifications.

46 Hardware Option
Boardlock Bracket and 4-40 Insert

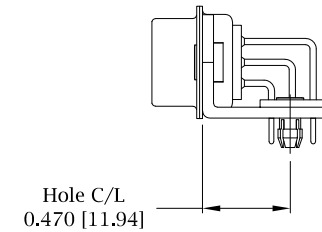
#4-40 Threaded Insert



9-37 Position Connector Boardlock Bracket



50 Position Connector Boardlock Bracket
** 50 Position Comes With Locator Plate



Boardlock Brackets Come Assembled On Connector

RoHS COMPLIANT

UNITS = inch [mm]

DO NOT SCALE FROM DRAWING



THESE DRAWINGS AND SPECIFICATIONS ARE THE PROPERTY OF NorComp AND SHALL NOT BE REPRODUCED, COPIED OR USED AS THE BASIS FOR THE MANUFACTURE OR SALE OF APPARATUS WITHOUT WRITTEN PERMISSION.

DRAWN:
PAM JENKINS
DATE:
11/28/2005

NorComp

SCALE: NTS	SHEET 3	OF 3	REV 17
DWG NO.		174-EYY-11YRY1	