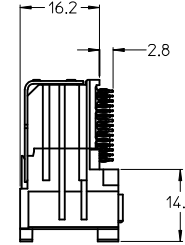
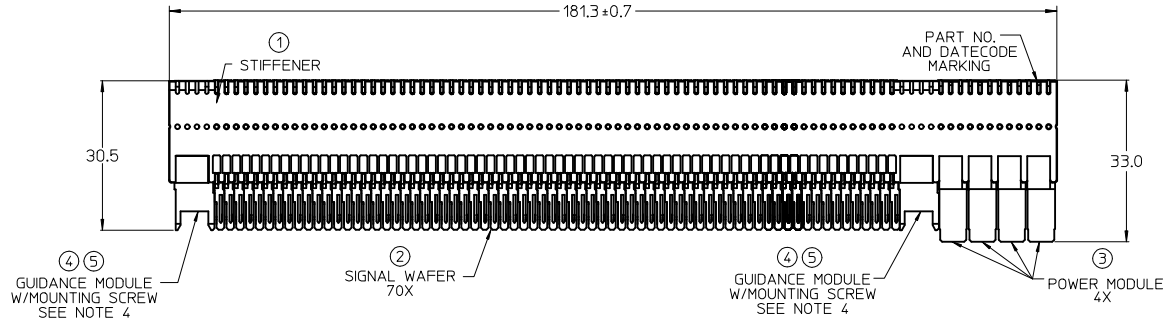


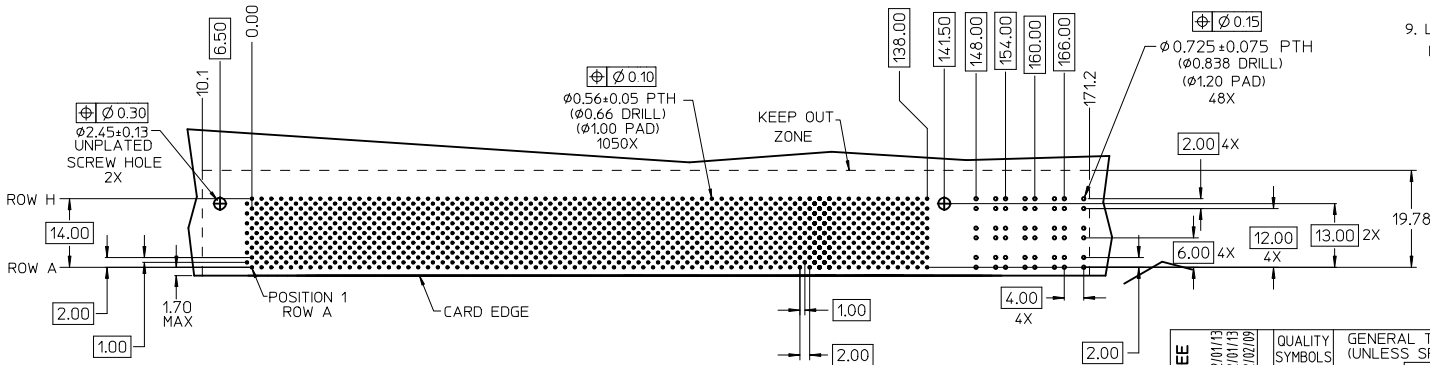
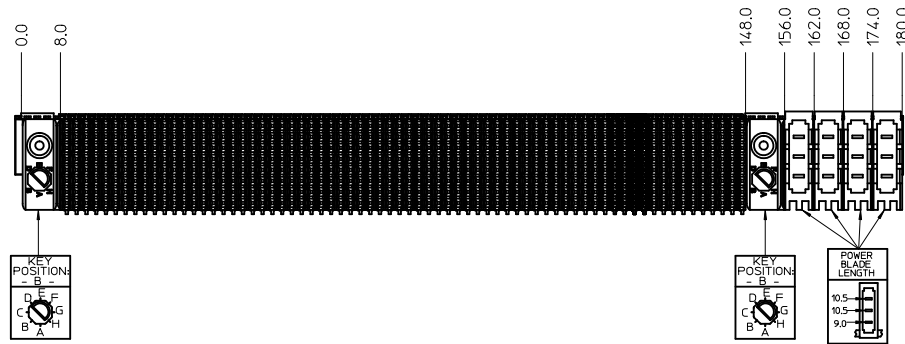
CUSTOMER: ELLACOYA



LEAD-FREE
PLATING

NOTES:

- MATERIALS: HOUSING : LIQUID CRYSTAL POLYMER (LCP)
GLASS-FILLED, UL94V-0, BLACK.
TERMINALS: COPPER ALLOY
STIFFENER: STAINLESS STEEL
- FINISH: SELECTIVE GOLD (Au) 0.76 micrometer MINIMUM
IN CONTACT AREA, SELECTIVE MATTE TIN (Sn) IN TAIL AREA,
NICKEL (Ni) UNDERPLATE OVERALL.
- REFER TO MOLEX PRODUCT SPECIFICATION PS-74031-999
FOR PERFORMANCE SPECIFICATIONS.
- PARTS TO BE PACKAGED PER PK-70873-5041.
SCREWS PACKED IN BAG INSIDE TUBE.
- THIS PART CONFORMS TO CLASS "B" REQUIREMENTS OF
MOLEX COSMETIC SPECIFICATION PS-45499-002.
- REFER TO MOLEX DOCUMENT SD-74041-002 FOR ADDITIONAL
DETAIL ON THE SIGNAL WAFER.
- REFER TO MOLEX DOCUMENT SD-74037-006 FOR ADDITIONAL
DETAIL ON THE GUIDANCE MODULE.
- REFER TO MOLEX DOCUMENT SD-75885-002 FOR ADDITIONAL
DETAIL ON THE LEAD-FREE POWER MODULE.
- LABEL MARKED WITH MOLEX PART NUMBER AND DATE CODE.
LABEL MAY BE REPLACED WITH LASER MARKING ON THE STIFFENER.



| ITEM | PART NUMBER | PART DESCRIPTION | QTY |
|------|-------------|---------------------------|-----|
| 1 | 74046-0181 | STIFFENER | 1 |
| 2 | 74041-1001 | SIGNAL WAFER, LF | 70 |
| 3 | 75885-8233 | POWER MODULE, LF | 4 |
| 4 | 74037-8002 | GUIDANCE MODULE - KEY "B" | 2 |
| 5 | 73726-0000 | GUIDE MODULE MNTG SCREW | 2 |

DAUGHTERCARD HOLE PATTERN
(CONNECTOR SIDE)

| | | | | | | |
|---|-----------------------|---------------------------------------|-----------------|---------------|---|------------------------|
| CHG TO LEAD-FREE EC NO: UCP2012-2179 DRAWING: CHKD:SMALLEY 2012/01/13 APPROVAL: SMILLER 2012/02/09 | QUALITY SYMBOLS | GENERAL TOLERANCES (UNLESS SPECIFIED) | DIMENSION STYLE | SCALE | DESIGN UNITS | THIRD ANGLE PROJECTION |
| | ▽=0 | mm INCH | MM ONLY | 2:1 | METRIC | ☉ |
| | ▽=0 | 4 PLACES ± --- ± --- | DRAWN BY | DATE | TITLE | |
| | ▽=0 | 3 PLACES ± --- ± --- | VARVARA | 05/08/19 | VHDM 8 ROW, LF DAUGHTERCARD SALES DRAWING | |
| | 2 PLACES ± 0.25 ± --- | CHECKED BY | DATE | MATERIAL NO. | | |
| | 1 PLACE ± 0.38 ± --- | KMULVEY | 05/08/19 | 74040-1107 | | |
| | ANGULAR ± 1/2° | APPROVED BY | DATE | DOCUMENT NO. | | |
| | | SMILLER | 2012/02/09 | SD-74040-1107 | | |
| DRAFT WHERE APPLICABLE MUST REMAIN WITHIN DIMENSIONS | | SIZE | | SHEET NO. | | |
| | | D | | 1 OF 1 | | |
| THIS DRAWING CONTAINS INFORMATION THAT IS PROPRIETARY TO MOLEX INCORPORATED AND SHOULD NOT BE USED WITHOUT WRITTEN PERMISSION | | | | | | |