

MATERIALS AND FINISHES:

BODY: ZINC/BRASS  
PLATED NICKEL

CENTER CONTACT: BRASS  
PLATED GOLD

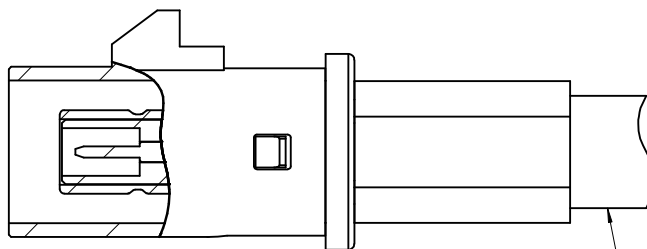
OUTER CASING: PLASTIC  
KEYING: SEE TABLE  
COLOR: SEE TABLE

INSULATOR: TEFLON

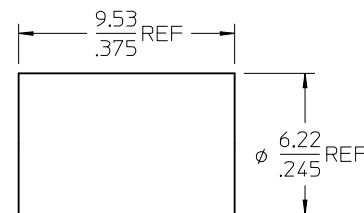
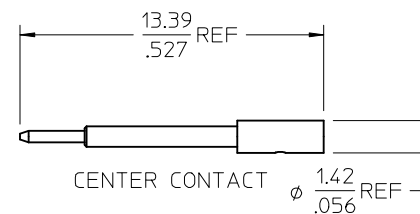
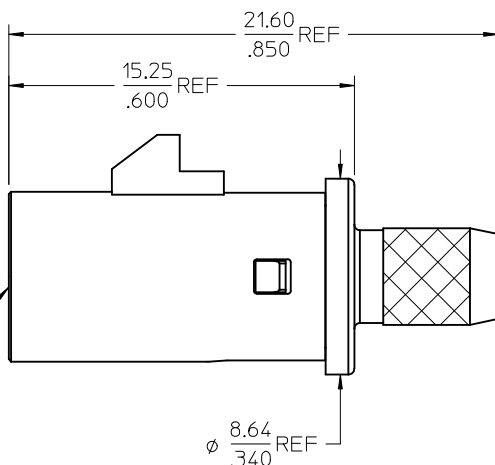
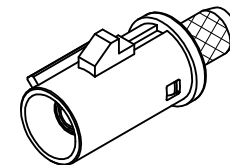
RETENTION SPECIFICATION:

THE FAKRA CONNECTOR WILL WITHSTAND  
A LONGITUDINAL FORCE OF 110 N(24.75 LBS)

FAKRA  
CONNECTOR  
KEYING  
CODE D



RG58 CABLE



CRIMP TUBE

AS-89678-750	ASSEMBLY INSTRUCTIONS
MIL-STD-348A, FIG. 311.1	INTERFACE
SPECIFICATION	DESCRIPTION

CHG: REDREW IN SD  
CHANGED ALL DIMS  
FROM IN/MM TO MM/IN  
ADDED P/N  
73404-0581 THRU  
-0583  
ADDED RIGHT VIEW  
TO SHEET 1  
ADDED SHEET 2  
AND 3

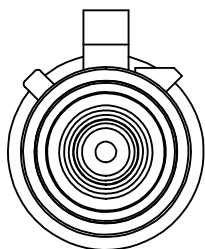
EC NO: URF2007-0200  
DRW:INTELALHTRY 2006/11/10  
CHKD:SSHAH 2006/11/10  
APPR:WIENER 2006/11/10

REV	DESCRIPTION
▲=0	QUALITY SYMBOLS
▽=0	

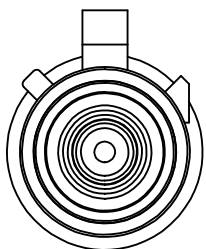
GENERAL TOLERANCES (UNLESS SPECIFIED)	
mm	INCH
4 PLACES ± .005	± .0005
3 PLACES ± .002	± .0002
2 PLACES ± .001	± .0001
1 PLACE ± .0005	± .00005
ANGULAR ± 2 °	
DRAFT WHERE APPLICABLE MUST REMAIN WITHIN DIMENSIONS	

DIMENSION STYLE	
MM/IN	SCALE
DRAWN BY SSS	DATE 2001/07/20
CHECKED BY TEF	DATE 2001/07/20
APPROVED BY GMH	DATE 2001/07/20
MATERIAL NO. SEE SHEET 3	DOCUMENT NO. SD-73404-057
SIZE C	THIS DRAWING CONTAINS INFORMATION THAT IS PROPRIETARY TO MOLEX INCORPORATED AND SHOULD NOT BE USED WITHOUT WRITTEN PERMISSION

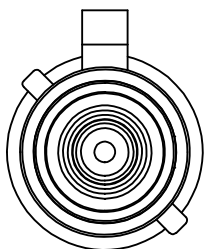
DESIGN UNITS	THIRD ANGLE PROJECTION
METRIC	
TITLE	
SMB JACK, STR, RG58, FAKRA, 50 OHMS SMB-JC	
MOLEX INCORPORATED	
SHEET NO. 1 OF 3	



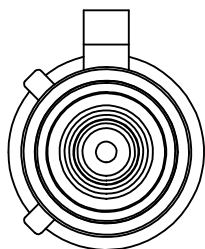
CODE - A



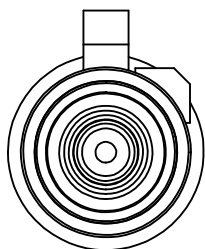
CODE - B



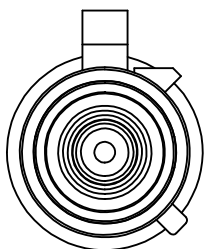
CODE - C



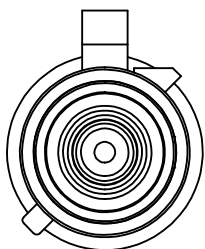
CODE - D



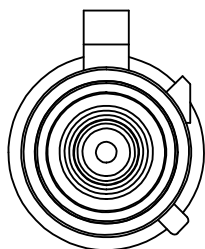
CODE - E



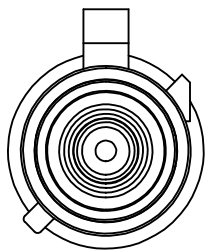
CODE - F



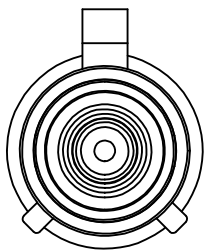
CODE - G



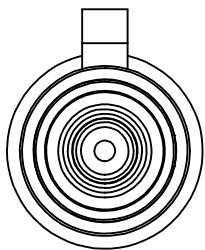
CODE - H



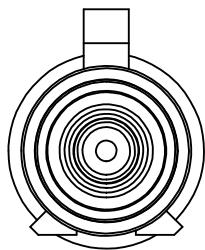
CODE - I



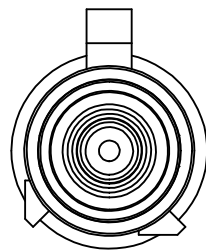
CODE - K



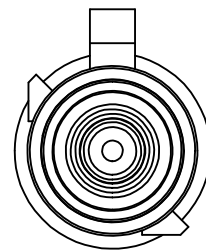
CODE - Z



CODE - L

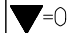
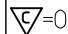


CODE - M



CODE - N

CHG: SEE SHEET 1  
 EC NO: URF2007-0200  
 DRWN:FLAHERTY 2006/11/10  
 CHKD:SSHAH 2006/11/10  
 APPR:JWIENER 2006/11/10

QUALITY SYMBOLS  
 = 0  
 = 0

GENERAL TOLERANCES (UNLESS SPECIFIED)

	mm	INCH
4 PLACES	± .005	± .0002
3 PLACES	± .005	± .0002
2 PLACES	± .005	± .0002
1 PLACE	± .005	± .0002

ANGULAR ± 2 °

DRAFT WHERE APPLICABLE  
 MUST REMAIN WITHIN DIMENSIONS

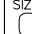
DIMENSION STYLE  
 MM/IN

DRAWN BY DATE  
 SSS 2001/07/20

CHECKED BY DATE  
 TEF 2001/07/20

APPROVED BY DATE  
 GMH 2001/07/20


MATERIAL NO.  
**SEE SHEET 3**

SIZE  


SCALE  
 DESIGN UNITS  
 METRIC

THIRD ANGLE PROJECTION

TITLE  
 SMB JACK, STR, RG58,  
 FAKRA, 50 OHMS  
 SMB-JC

 MOLEX INCORPORATED

DOCUMENT NO.  
 SD-73404-057

SHEET NO.  
 2 OF 3

THIS DRAWING CONTAINS INFORMATION THAT IS PROPRIETARY TO MOLEX INCORPORATED AND SHOULD NOT BE USED WITHOUT WRITTEN PERMISSION

N	PASTEL GREEN	73404-0583
M	PASTEL ORANGE	73404-0582
L	CARMINE RED	73404-0581
Z	WATER BLUE	73404-0580
K	CURRY YELLOW	73404-0579
I	BEIGE	73404-0578
H	VIOLET	73404-0577
G	GRAY	73404-0576
F	BROWN	73404-0575
E	GREEN	73404-0574
D	BORDEAUXVIOLET	73404-0573
C	BLUE	73404-0572
B	CREAM WHITE	73404-0571
A	BLACK	73404-0570
KEYING CODE	COLOR	PART NO.

CHG: SEE SHEET 1 EC NO: URF2007-0200 DRWN: TELAHERTY 2006/11/10 CHKD: SSHAH 2006/11/10 APPR: JWIENER 2006/11/10	QUALITY SYMBOLS =0 =0	GENERAL TOLERANCES (UNLESS SPECIFIED) <table border="1"> <tr><th></th><th>mm</th><th>INCH</th></tr> <tr><td>4 PLACES</td><td>± ---</td><td>± ---</td></tr> <tr><td>3 PLACES</td><td>± ---</td><td>± ---</td></tr> <tr><td>2 PLACES</td><td>± ---</td><td>± ---</td></tr> <tr><td>1 PLACE</td><td>± ---</td><td>± ---</td></tr> </table> ANGULAR ± 2 °		mm	INCH	4 PLACES	± ---	± ---	3 PLACES	± ---	± ---	2 PLACES	± ---	± ---	1 PLACE	± ---	± ---	DIMENSION STYLE <b>MM/IN</b> DRAWN BY DATE SSS 2001/07/20 CHECKED BY DATE TEF 2001/07/20 APPROVED BY DATE GMH 2001/07/20	SCALE DESIGN UNITS METRIC THIRD ANGLE PROJECTION	TITLE SMB JACK, STR, RG58, FAKRA, 50 OHMS SMB-JC	MATERIAL NO. <b>SEE TABLE</b>	DOCUMENT NO. SD-73404-057	SHEET NO. 3 OF 3
		mm	INCH																				
	4 PLACES	± ---	± ---																				
	3 PLACES	± ---	± ---																				
2 PLACES	± ---	± ---																					
1 PLACE	± ---	± ---																					
DRAFT WHERE APPLICABLE MUST REMAIN WITHIN DIMENSIONS	SIZE 	THIS DRAWING CONTAINS INFORMATION THAT IS PROPRIETARY TO MOLEX INCORPORATED AND SHOULD NOT BE USED WITHOUT WRITTEN PERMISSION																					
A2	REV																						

MATERIALS AND FINISHES:

BODY: ZINC/BRASS  
PLATED NICKEL

CENTER CONTACT: BRASS  
PLATED GOLD

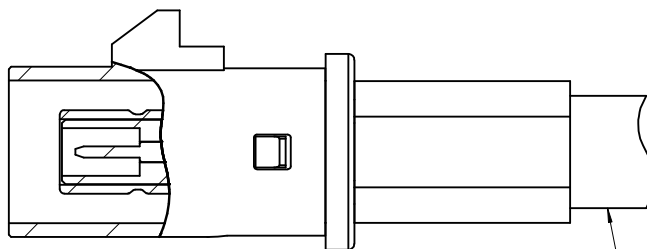
OUTER CASING: PLASTIC  
KEYING: SEE TABLE  
COLOR: SEE TABLE

INSULATOR: TEFLON

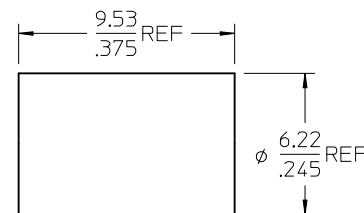
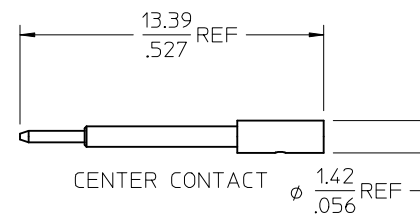
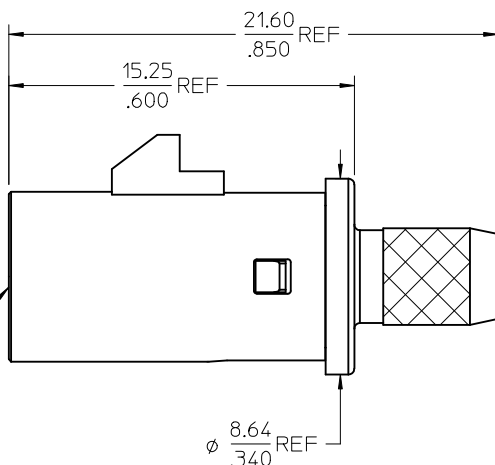
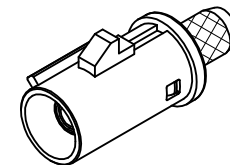
RETENTION SPECIFICATION:

THE FAKRA CONNECTOR WILL WITHSTAND  
A LONGITUDINAL FORCE OF 110 N(24.75 LBS)

FAKRA  
CONNECTOR  
KEYING  
CODE D



RG58 CABLE



CRIMP TUBE

AS-89678-750	ASSEMBLY INSTRUCTIONS
MIL-STD-348A, FIG. 311.1	INTERFACE
SPECIFICATION	DESCRIPTION

CHG: REDREW IN SD  
CHANGED ALL DIMS  
FROM IN/MM TO MM/IN  
ADDED P/N  
73404-0581 THRU  
-0583  
ADDED RIGHT VIEW  
TO SHEET 1  
ADDED SHEET 2  
AND 3

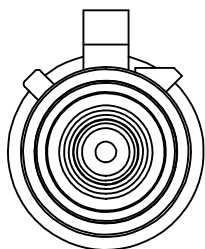
EC NO: URF2007-0200  
DRAWN BY: DRWIN/ELAHERTY 2006/11/10  
CHKD: SSHAH 2006/11/10  
APPR: WIENER 2006/11/10

REV	DESCRIPTION
A2	

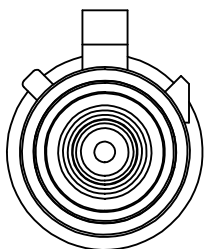
QUALITY SYMBOLS	
GENERAL TOLERANCES (UNLESS SPECIFIED)	
	mm INCH
4 PLACES	± .004 ± .0015
3 PLACES	± .005 ± .002
2 PLACES	± .007 ± .0025
1 PLACE	± .010 ± .0035
ANGULAR ± 2 °	
DRAFT WHERE APPLICABLE MUST REMAIN WITHIN DIMENSIONS	

DIMENSION STYLE	
MM/IN	
DRAWN BY	DATE
SSS	2001/07/20
CHECKED BY	DATE
TEF	2001/07/20
APPROVED BY	DATE
GMH	2001/07/20
MATERIAL NO.	
SEE SHEET 3	
SIZE	
THIS DRAWING CONTAINS INFORMATION THAT IS PROPRIETARY TO MOLEX INCORPORATED AND SHOULD NOT BE USED WITHOUT WRITTEN PERMISSION	

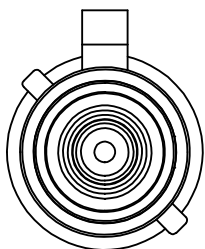
SCALE	DESIGN UNITS	THIRD ANGLE PROJECTION
	METRIC	
TITLE		
SMB JACK, STR, RG58, FAKRA, 50 OHMS SMB-JC		
MOLEX INCORPORATED		
DOCUMENT NO.	SHEET NO.	
SD-73404-057	1 OF 3	



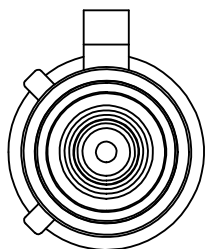
CODE - A



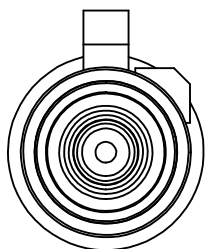
CODE - B



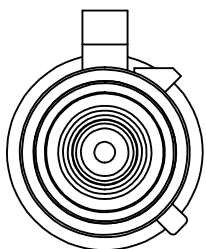
CODE - C



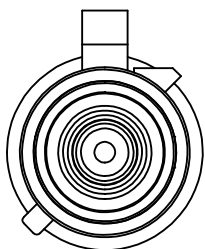
CODE - D



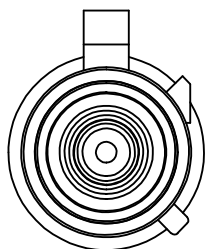
CODE - E



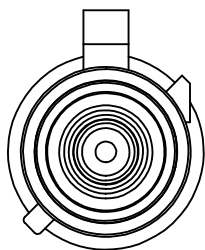
CODE - F



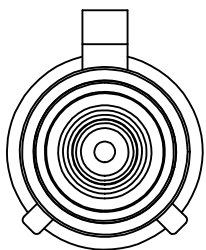
CODE - G



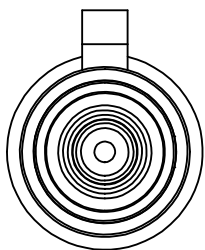
CODE - H



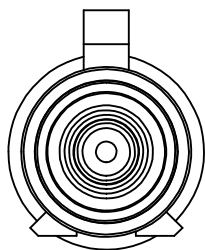
CODE - I



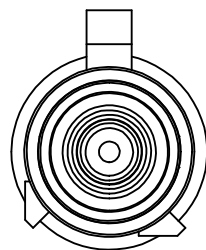
CODE - K



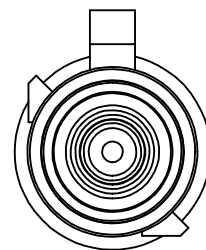
CODE - Z



CODE - L

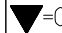
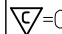


CODE - M



CODE - N

CHG: SEE SHEET 1  
 EC NO: URF2007-0200  
 DRWN:FLAHERTY 2006/11/10  
 CHKD:SSHAH 2006/11/10  
 APPR:JWIENER 2006/11/10

QUALITY SYMBOLS  
 = 0  
 = 0

GENERAL TOLERANCES (UNLESS SPECIFIED)

	mm	INCH
4 PLACES	± .005	± .0002
3 PLACES	± .005	± .0002
2 PLACES	± .005	± .0002
1 PLACE	± .005	± .0002

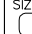
ANGULAR ± 2 °

DRAFT WHERE APPLICABLE  
 MUST REMAIN WITHIN DIMENSIONS

DIMENSION STYLE  
**MM/IN**

DRAWN BY	DATE
SSS	2001/07/20
CHECKED BY	DATE
TEF	2001/07/20
APPROVED BY	DATE
GMH	2001/07/20

MATERIAL NO.  
**SEE SHEET 3**


SIZE  


SCALE  
**METRIC**

DESIGN UNITS  
**METRIC**

THIRD ANGLE PROJECTION

TITLE  
**SMB JACK, STR, RG58,  
 FAKRA, 50 OHMS  
 SMB-JC**

 **MOLEX INCORPORATED**

DOCUMENT NO.  
**SD-73404-057**

SHEET NO.  
**2 OF 3**

THIS DRAWING CONTAINS INFORMATION THAT IS PROPRIETARY TO MOLEX INCORPORATED AND SHOULD NOT BE USED WITHOUT WRITTEN PERMISSION

N	PASTEL GREEN	73404-0583
M	PASTEL ORANGE	73404-0582
L	CARMINE RED	73404-0581
Z	WATER BLUE	73404-0580
K	CURRY YELLOW	73404-0579
I	BEIGE	73404-0578
H	VIOLET	73404-0577
G	GRAY	73404-0576
F	BROWN	73404-0575
E	GREEN	73404-0574
D	BORDEAUXVIOLET	73404-0573
C	BLUE	73404-0572
B	CREAM WHITE	73404-0571
A	BLACK	73404-0570
KEYING CODE	COLOR	PART NO.

CHG: SEE SHEET 1 EC NO: URF2007-0200 DRWN: TELAHERTY 2006/11/10 CHKD: SSHAH 2006/11/10 APPR: JWIENER 2006/11/10	QUALITY SYMBOLS ▼=0 ▽=0	GENERAL TOLERANCES (UNLESS SPECIFIED) <table border="1"> <tr> <td></td> <td>mm</td> <td>INCH</td> </tr> <tr> <td>4 PLACES</td> <td>± ---</td> <td>± ---</td> </tr> <tr> <td>3 PLACES</td> <td>± ---</td> <td>± ---</td> </tr> <tr> <td>2 PLACES</td> <td>± ---</td> <td>± ---</td> </tr> <tr> <td>1 PLACE</td> <td>± ---</td> <td>± ---</td> </tr> </table>		mm	INCH	4 PLACES	± ---	± ---	3 PLACES	± ---	± ---	2 PLACES	± ---	± ---	1 PLACE	± ---	± ---	DIMENSION STYLE MM/IN DRAWN BY DATE SSS 2001/07/20 CHECKED BY DATE TEF 2001/07/20 APPROVED BY DATE GMH 2001/07/20	SCALE DESIGN UNITS METRIC THIRD ANGLE PROJECTION	TITLE SMB JACK, STR, RG58, FAKRA, 50 OHMS SMB-JC
		mm	INCH																	
	4 PLACES	± ---	± ---																	
	3 PLACES	± ---	± ---																	
2 PLACES	± ---	± ---																		
1 PLACE	± ---	± ---																		
MATERIAL NO. SEE TABLE	DOCUMENT NO. SD-73404-057	SHEET NO. 3 OF 3																		
DRAFT WHERE APPLICABLE MUST REMAIN WITHIN DIMENSIONS			SIZE THIS DRAWING CONTAINS INFORMATION THAT IS PROPRIETARY TO MOLEX INCORPORATED AND SHOULD NOT BE USED WITHOUT WRITTEN PERMISSION																	
A2	REV																			